

## 11-26 GM 2500/3500 2WD/4WD XTREME DUTY IDLER PIVOT (XDIP) KIT

**INSTALL INSTRUCTIONS:**

11-26 GM 2500/3500 2WD/4WD XTREME DUTY IDLER PIVOT (XDIP) KIT  
SKU: 110-91411

**COMPONENTS INCLUDED:**

QUANTITY	PART #	DESCRIPTION
1	80068	COGNITO 11-26 GM 2500/3500 2WD/4WD XDIP
1	8871	COGNITO 11+ GM HD IDLER SUPPORT FRAME GUSSET WELDMENT


**HARDWARE INCLUDED:**

QUANTITY	PART #	DESCRIPTION
2	15319	5/8"-11 X 4" HCS GR8 YZINC
2	37272	5/8"-11 LOCK NUT GRC ZINC
4	33817	1/2" SAE FLAT WASHER GR8 YZINC

**TOOLS REQUIRED:**

Floor Jack	
Jack Stands	10mm Socket/Wrench
Torque Wrench	15mm Socket/Wrench
Ball Joint Separator	21mm Socket / Wrench
Hammer	21mm Deep Socket
7/8" Socket / Wrench	24mm Socket / Wrench
15/16" Socket / Wrench	30mm Socket / Wrench
1" Socket / Wrench	46mm Socket / Wrench

**TECH NOTES:**

- Read instructions carefully and study the pictures (if included) before attempting installation.
- Check the parts and hardware packages against the parts list to assure that your kit is complete before starting
- If this product was purchased as part of a bundle/package, familiarize yourself with each set of instructions included with the bundle/package before beginning.
- Follow the OE specifications when replacing or re-installing OE fasteners, retainers, and hardware specified in the OEM manual.
- Estimated install time: 1-2 hours.

**WARNING**

Please read this entire instruction sheet before beginning installation. Proper installation of these components requires a qualified mechanic. Always wear safety glasses when using power tools, and take appropriate precautions when working under a vehicle. If these instructions are not properly followed you may jeopardize your, and your passenger's safety, and severe frame, suspension or tire damage may also result from improper installation.

Modification of vehicle suspension can interfere with ride-height sensors, active suspension, lane departure features, semi-autonomous, and autonomous driving features. It is the responsibility of the installer to determine feature compatibility prior to installation. Recalibration of sensors may be required in the event of any modification.

**REQUIREMENTS:**

- Installation requires a qualified mechanic.
- Follow the OE specifications when replacing or re-installing OE fasteners, retainers, and hardware specified in the OEM service manual.
- Always wear safety glasses when using power tools.
- When a lift is required to perform the installation of these products ensure the vehicle is properly supported before attempting installation or serious injury may occur.

## INSTALLATION

1. Place the truck on a flat surface with the front wheels straight, engage the parking brake and chock the rear tires.
2. Use a suitable floor jack in the manufacturer designated spot on the frame to lift the front of the truck, then place a suitable jack stand under the frame and set the truck down securely on the jack stand. NEVER WORK UNDER AN UNSUPPORTED VEHICLE. Remove the front wheels and tires.
3. Remove the splash guard at the front cross member of the vehicle, underneath the front of the engine. Typically there are four bolts to be removed using a 15mm socket/wrench to access the pitman and idler arms. Set aside for reinstallation later. **[FIGURE 1 & 2]**



Figure 1



Figure 2

4. The factory idler assembly is located on the passenger-side frame rail.
5. Remove the nut holding the idler arm to the idler arm pivot using a 30mm socket/wrench.
6. Disconnect the idler arm from the center link, remove the cotter pin from the idler stud and loosen and remove the castle nut that holds the center link to the idler arm. Separate the center link from the idler arm shaft using a ball joint separator or a pickle fork and hammer.
7. Once separated, the center link may drop slightly. Use a jack or strap to support the center link so that it does not stress the other components.
8. Loosen the nuts and bolts holding the factory idler pivot using a 21mm socket/wrench and pry it out of the mounting pocket, maneuver it out around the suspension components to remove.
9. Install the idler arm on the taper of the COGNITO XDIP, leaving the hardware loose. **[FIGURE 3]**

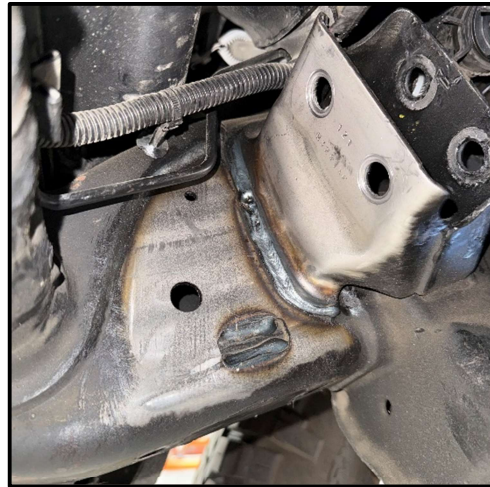


Figure 3

10. The Idler Support Frame Gusset will need to be welded in on the opposite side from the mounting hardware.
11. Install the COGNITO XDIP in the stock factory location with the new Idler Support Frame Gusset on the outside of the stock mounting bracket, fasten using the supplied 5/8"-11 hardware. Leave loose, do not tighten. **[FIGURE 4]**

*Figure 4*

12. Scribe the profile of the gusset on the frame. Remove the gusset and clean off the frame coating on the frame (lacquer thinner helps with the removal). **[FIGURE 5 & 6]**

*Figure 5**Figure 6*

13. Reinstall the gusset to the frame and torque to 200 ft-lbs. If needed, remove the brake line clip from the frame, move it away, and cover it to prevent damage during welding. **[FIGURE 7]**

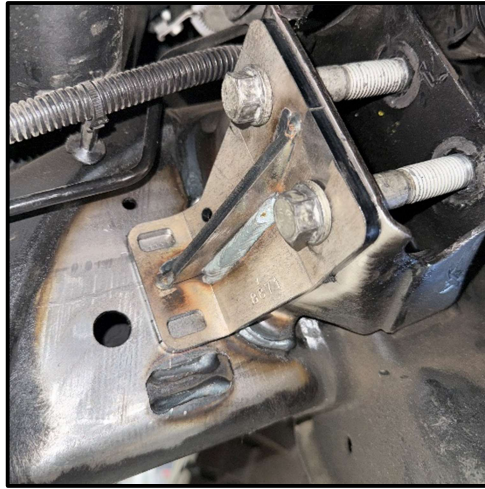


Figure 7

14. Weld the support gusset to the frame, making sure to weld both top and bottom plug weld slots, as well as the accessible gusset profile. Paint all exposed metal areas to prevent corrosion. **[FIGURE 8]**



Figure 8

15. Retorque the XDIP hardware after welding to ensure nothing loosened from the applied heat. Reclip the factory brake line to its original location.
16. Reinstall the idler arm ball joint to the center link using the stock hardware. [Torque to factory spec, then align for cotter pin]
17. Reinstall the splash guard with the stock hardware. [Torque to factory spec]
18. Reinstall the wheels and tires, remove the vehicle from the jackstands and lower it back to the ground. [Torque lugs to factory specs]
19. Get vehicle professionally aligned after the install.

**VERIFY ALL FASTENERS ARE PROPERLY TORQUED BEFORE DRIVING VEHICLE.  
RETORQUE ALL NUTS, BOLTS AND LUGS AFTER 100 MILES AND PERIODICALLY THEREAFTER.**



## WARRANTY / RETURN POLICY / SAFETY

### **Cognito Limited Lifetime Warranty**

Cognito Motorsports, Inc. hereinafter “Cognito,” warrants to the original retail purchaser, that its suspension products are free from workmanship and material defects for as long as the purchaser owns the vehicle on which the product(s) were originally installed. This warranty will be void if any modifications are made to the components, including alterations to the surface finish, i.e.; painting, powder coating, plating, and/or welding, or if they are improperly installed. Cognito truck suspension products are not designed nor intended to be installed on “competition” vehicles used in race applications, stunt or for exhibition purposes that are outside of the intended operating conditions specified by the manufacturer. Racing and competition are defined as any contests between two or more vehicles; or vehicles competing individually on off road circuits in timed events (whether or not such contests are for an award or prize).

This warranty does not include coverage for police, taxi, government or commercial vehicles, and the warranty does not cover Cognito products sold outside of the USA. Cognito’s obligations under this warranty are specified and applied at its sole discretion, and warranty coverage is limited to repair or replacement of the defective product(s). Any and all costs of removal, installation or reinstallation; freight charges, incidental or consequential damages associated with the covered products are expressly excluded from this warranty.

The following items are exempt from Cognito limited warranty coverage: bushings, bump stops, tie-rod ends (Heim joints) and limiting straps. These parts are “consumables” and designed to wear as a normal part of their duty cycle, therefore they are not considered defective when worn. The aforementioned products are warranted separately against defects in workmanship, for 60 days from the date of purchase. As a condition of warranty validation, respective Cognito suspension components must be installed as a complete system (not combined with non-Cognito hardware or ancillary parts). Any substitutions or omission of required components will void the warranty. Some minor cosmetic wear and imperfections may occur to parts during shipping, which is not covered under this warranty. This limited warranty does not apply to any components that have been subjected to collision damage, negligence, alteration, abuse, or misuse, and coverage does not extend to products manufactured by third-party companies. Cognito reserves the right to supersede, discontinue, or change the design, finish, part number and/or application of its parts when deemed necessary, without notice.

### **Return Policy**

Product returns will not be accepted without prior written approval from an authorized Cognito representative. All products being returned must be shipped via trackable, prepaid freight. Returned products are subject to a 25% percent restocking fee. The eligible return period for products purchased directly from Cognito is 30 days from the verified date when the product(s) were originally received by the purchaser.

### **Product Safety Advisory**

The installation of Cognito steering and suspension components will modify your vehicle’s original factory equipment and geometry, which may cause it to handle differently than a stock (unaltered) vehicle. Installation of these components is not intended to strengthen nor reinforce the vehicle’s frame, nor are they designed to increase rollover protection. It is necessary to periodically inspect all suspension and drive train components for proper attachment, torque specifications, operation, and for any potential unusual wear or damage. Installation of these parts will modify the height of the vehicle and may raise the center of gravity. Modifying vehicle height combined with off road operation may increase your vehicle’s susceptibility to rollover conditions, which may cause serious injury or death. Many states regulate allowable vehicle height modifications, and it is your responsibility to know and comply with the legal requirements specified by the laws where you reside. Modifications to your vehicle’s ride height may also affect the ride quality, driver input response, trackability and handling, and wear to your vehicle’s suspension components and tires.



34935 Flyover Ct Bakersfield, CA 93308 Phone: (866) 426-4648 Fax: (661) 588-8295

[www.cognitomotorsports.com](http://www.cognitomotorsports.com)