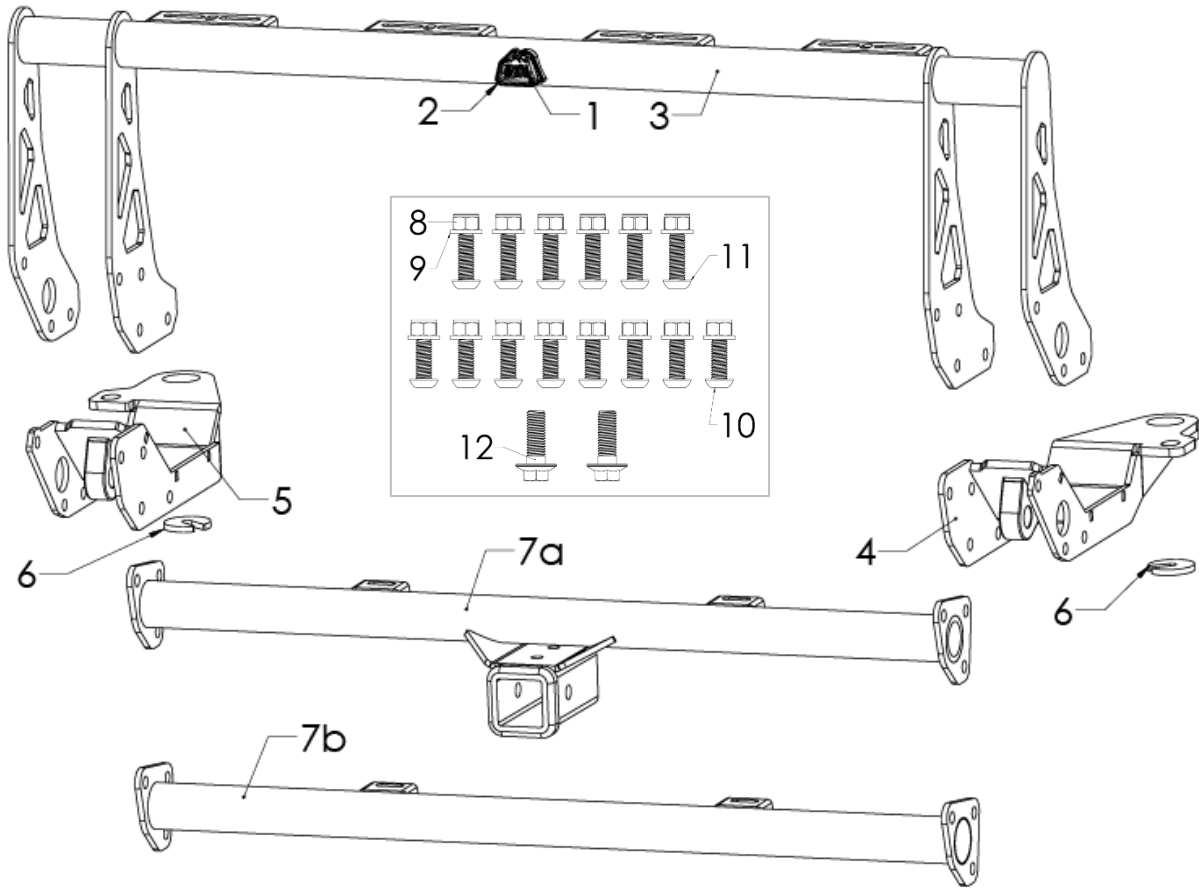




79-27025/28
aFe Power Terra Guard Bull Bar
RAM 1500 DT



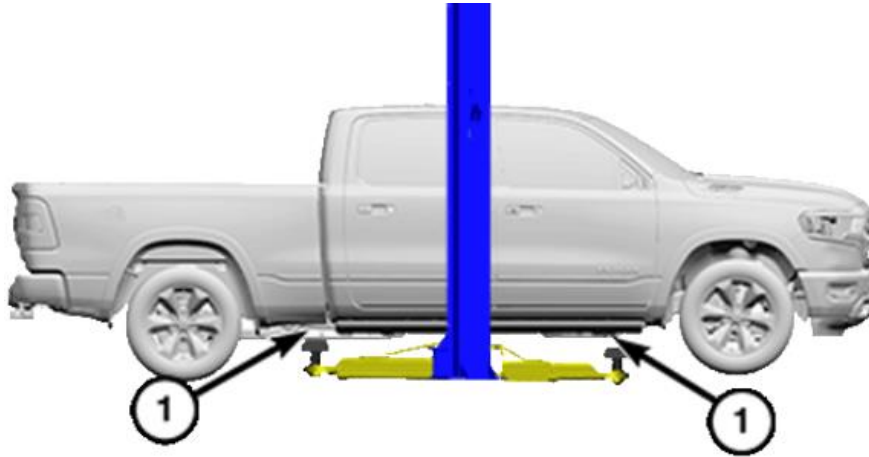
Item	Part #	Description	Qty.
1	06-00238	Emblem, Terra Guard: 304SS (0.5mm 3M)	1
2	05-01791	Base, 2" OD, Terra Guard Badge	1
3	05-61660	Bull Bar, Assembly: RAM 1500 DT	1
4	05-61661	S/A LF Bracket Mount: 1500 DT	1
5	05-61662	S/A RT Bracket Mount: 1500 DT	1
6	05-61663	Washer, Open Ended .250"	2
7a	05-61664	S/A Bottom Tube W/ Receiver, 1500 DT (79-27028)	1
7b	05-61665	S/A Bottom Tube, 1500 DT (79-27025)	1
8	03-50814	Nut, Nylock: M12x1.75 SS Black	14
9	03-50815	Washer, Flat M12 SS Black	14
10	03-50816	Screw, Btn Hd: M12x1.75x 30mm S/S Black	8
11	03-50817	Screw, Btn Hd: M12x1.75x 35mm S/S Black	6
12	03-50818	Screw, Hex Flange: M14 x 2 x 40	2



- Please read the entire instruction manual before proceeding.
- Ensure all components listed are present.
- For technical support please call 951-493-7185.
- Ensure you have all necessary tools before proceeding.
- Retain factory parts for future use.

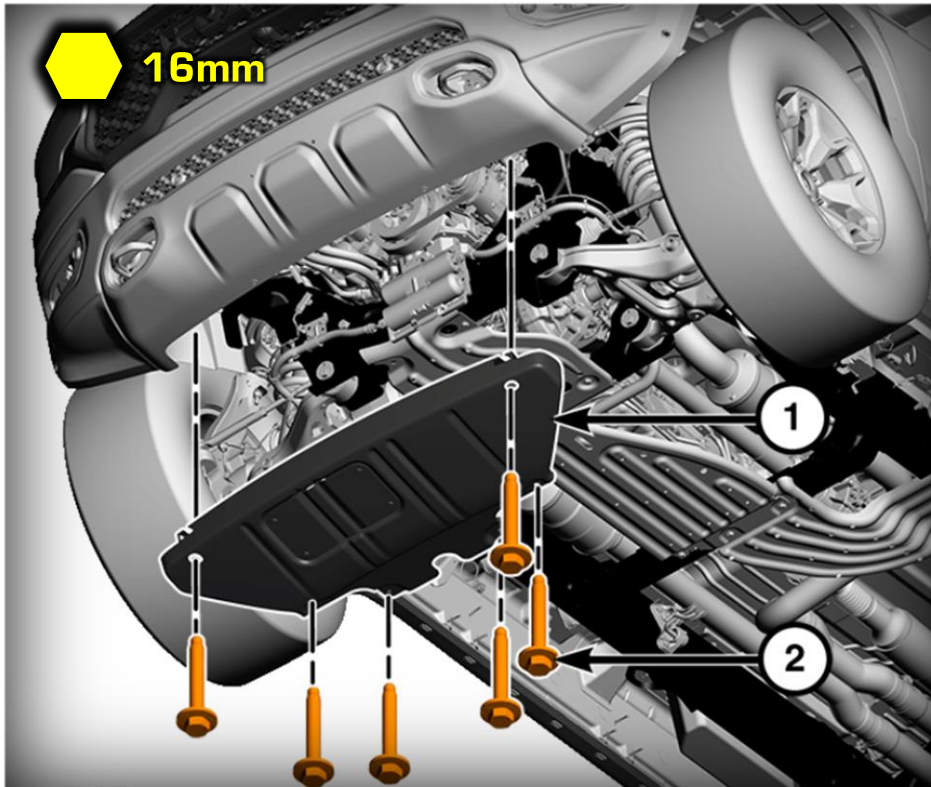
Procedure:

1. This installation can be done with the vehicle on the ground. But, for an easier installation, use a vehicle lift.



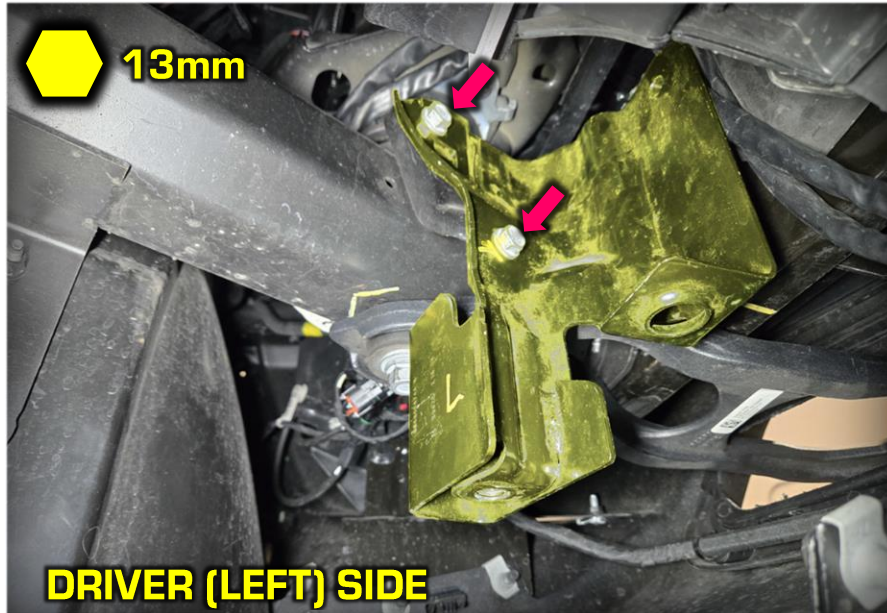
1-Frame Lift Points

2. Remove the skid plate by unfastening (6) bolts. 16mm socket

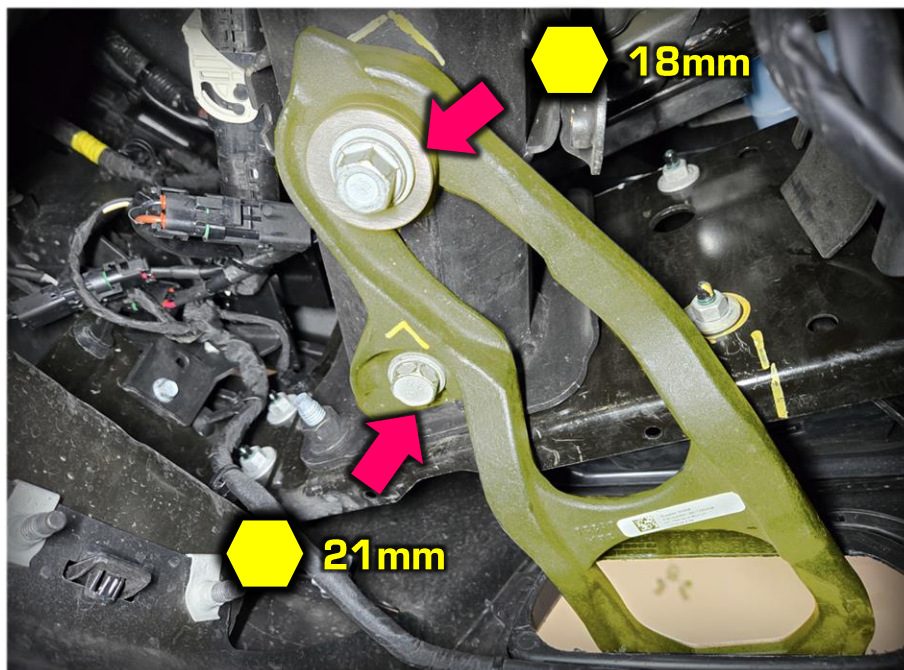




3. Unbolt the skid plate front mount brackets (one on each side). They are located just inboard of the tow hooks. There are (2) bolts on each bracket.



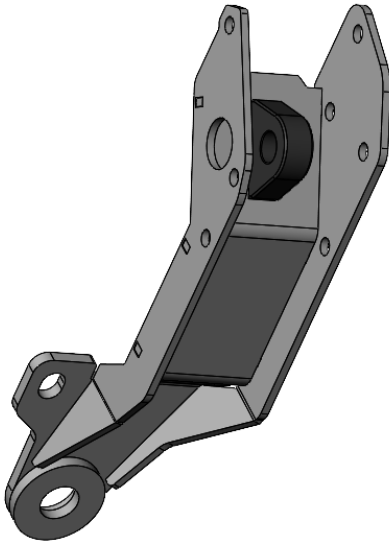
4. Unbolt the factory tow hooks. It's held in by a super long bolt and short bolt. Keep the hardware for reinstallation. *Special note: If your truck was not equipped with tow hooks, Unbolt the rearward longer bolt until it hangs down about 1". No need to fully remove.*



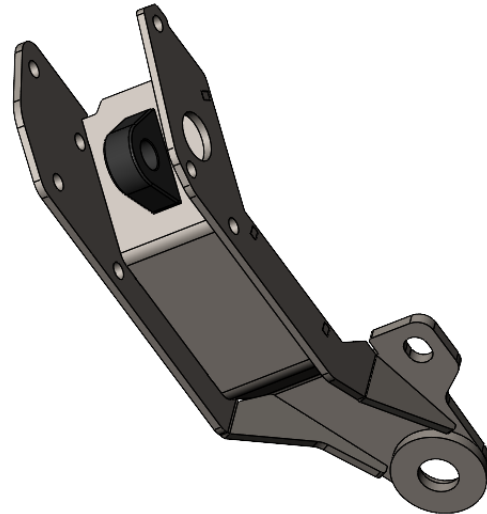


5. Identify the aFe lower mounting brackets. There is a left and right hand side.(see below)

PASSENGER (RIGHT) SIDE



DRIVER (LEFT) SIDE

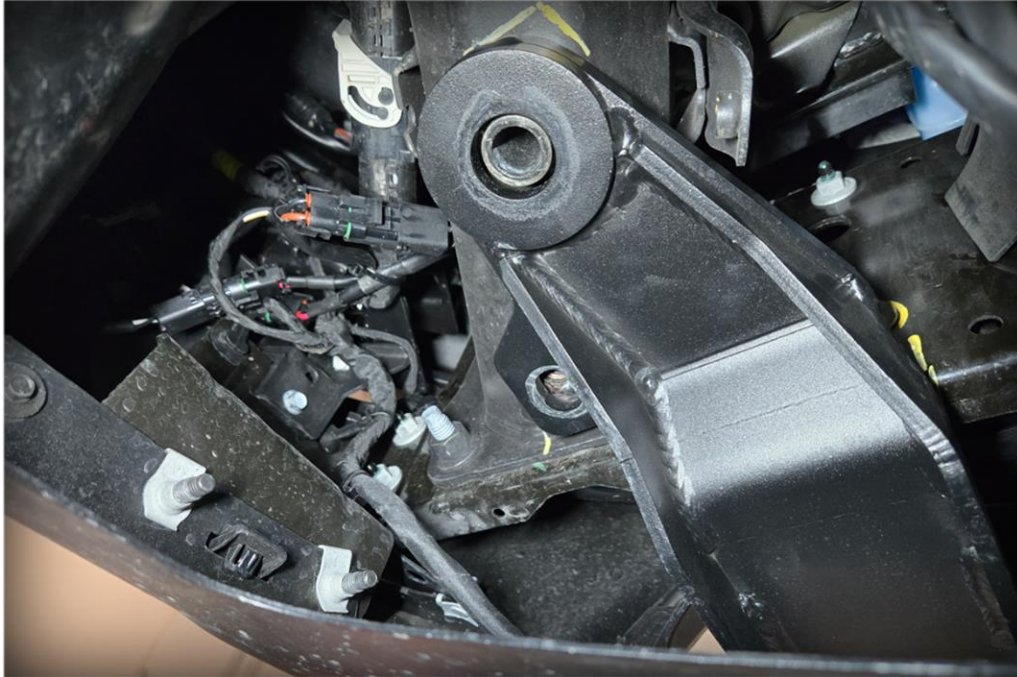


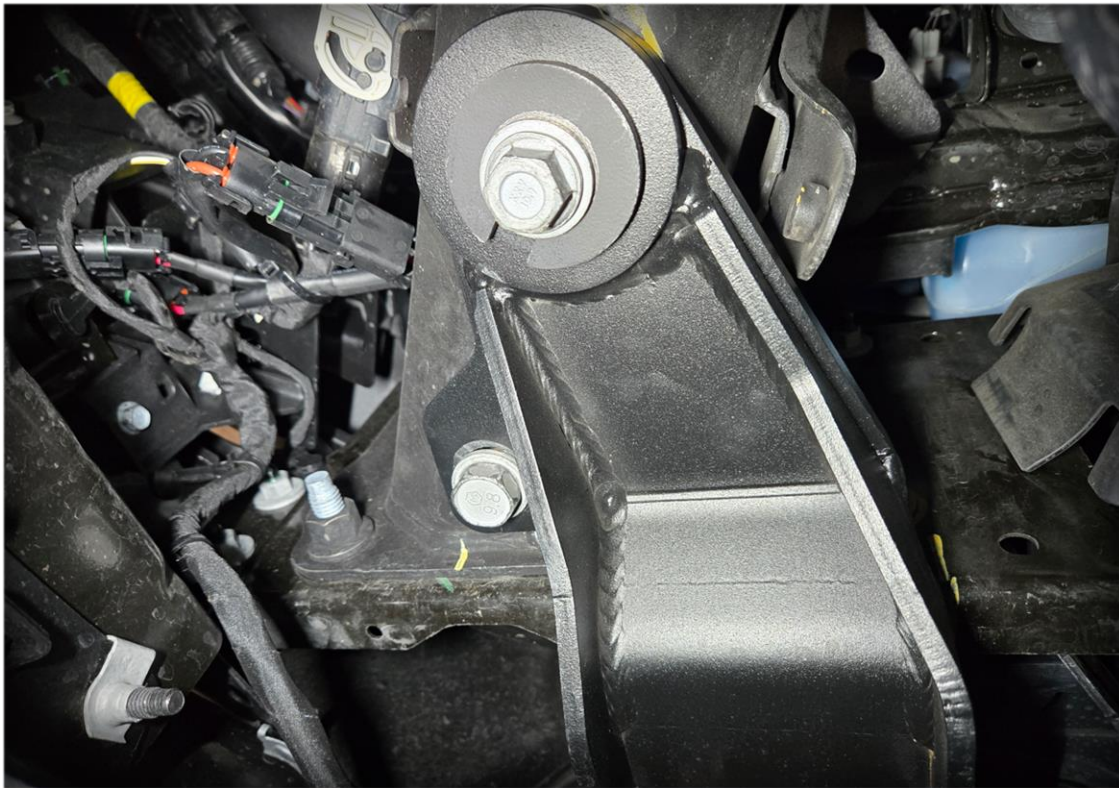
Install by feeding the bracket through the bumper opening. Take caution when passing through the plastic. You may need to wiggle and twist the bracket to fit through the opening, but it should pass through with little to no force.



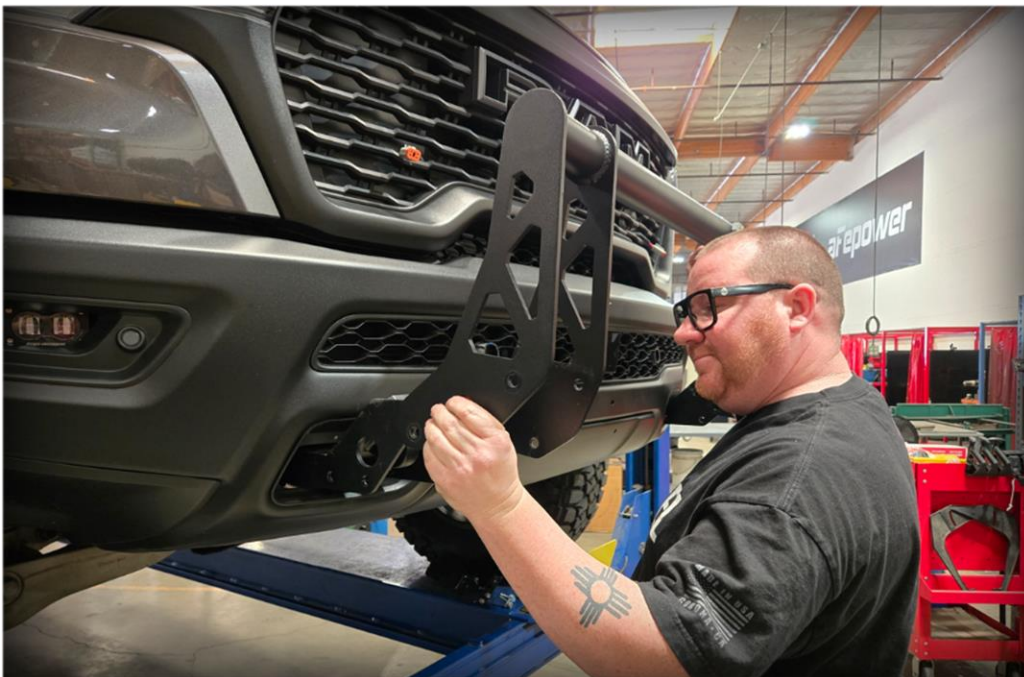


Reuse the hardware from the factory tow hook but use the supplied open washer for the long bolt. Snug the bolts but do not fully tighten. You want to keep these fairly loose when fitting the rest of the bull bar. If your truck did not come with factory tow hooks, we provide the missing smaller bolt for this installation. (item #12)





6. Next, bring over the main bull bar section and position it up to the brackets.

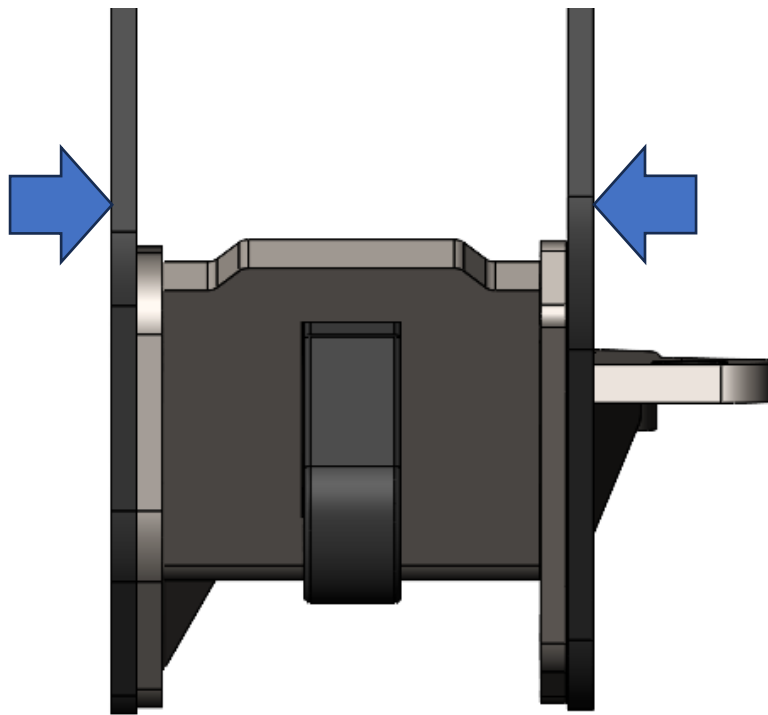




The upright plates on the main bull bar go on the **outside** of the mounting bracket plates.



Upright Plates Slip Over the Mounting Brackets



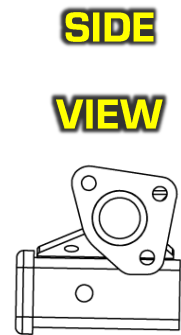
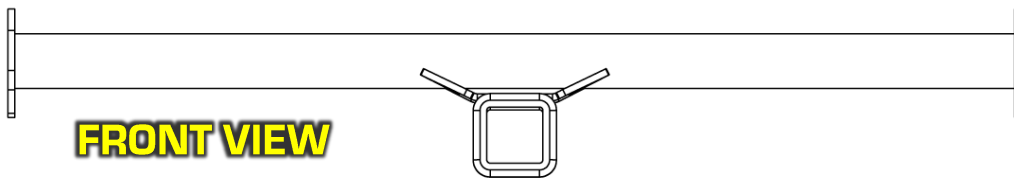
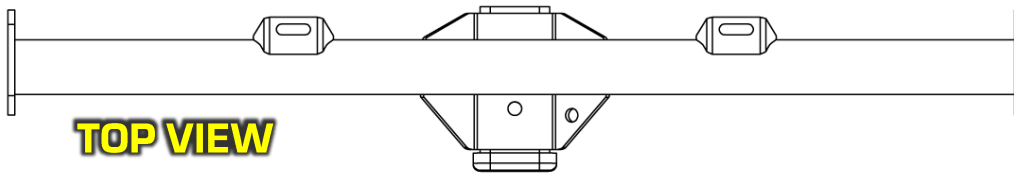


Start the (3) button head bolts on the outer plates. Use the **shorter** M12x30mm button head bolts. (Tool: 8mm allen, 19mm wrench)





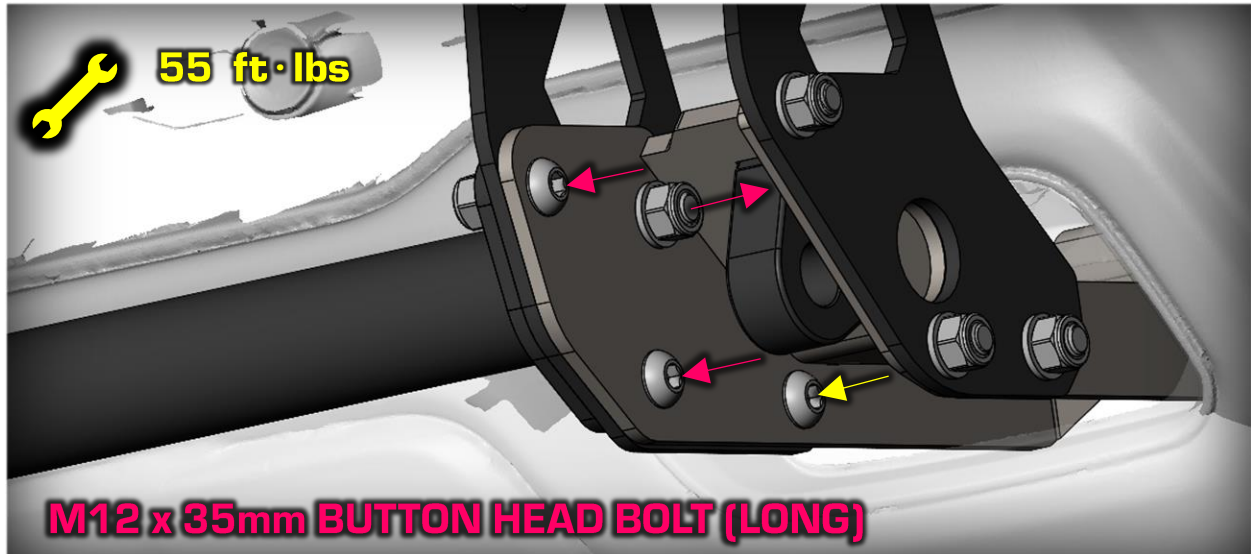
7. Once you have a few bolts on each outer plates to hold up the main section, grab the lower tube assembly and position it in the middle, in between the mounting bracket and bull bar plates. The 3-hole pattern is designed to fit one way so follow the diagram below.



(Lower Tube Assembly with Receiver Shown)

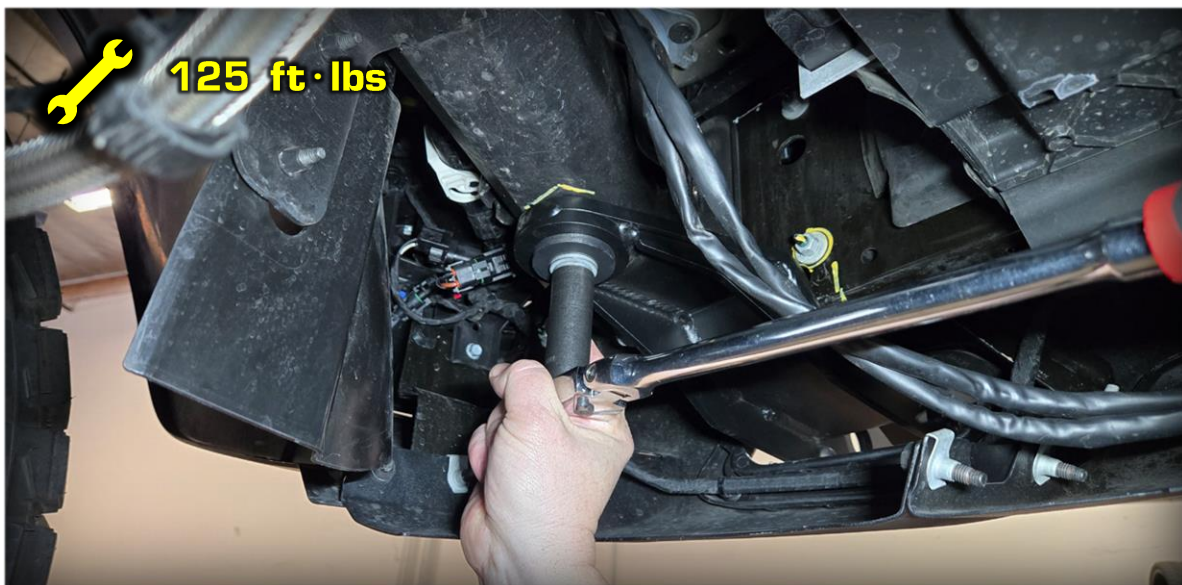


8. Finish installing the rest of the hardware noting the orientation of the bolts. Use the longer M12x35mm button heads for the lower tube assembly plates (3 per side). The last bolt is near the bottom of the inner plate shown with yellow arrow. If they face the wrong way, they can hinder the fitment of any shackle you end up installing on the D-ring. Once all bolts are in, torque all these M12 button heads to 55 ft/lbs. Use the longer M12x35mm button heads for the lower tube assembly plates (3 per side). The last bolt is near the bottom of the inner plate shown with yellow arrow.



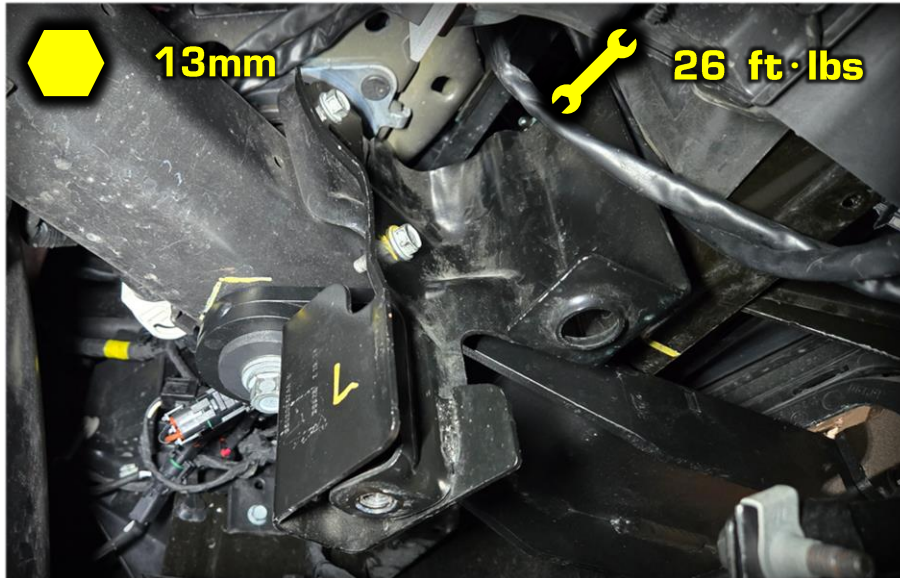
Note direction of bolts.

9. Next fully tighten the long and small bolt that hold up the mounting brackets to the frame on each side. Tighten these to **125 ft/lbs**.

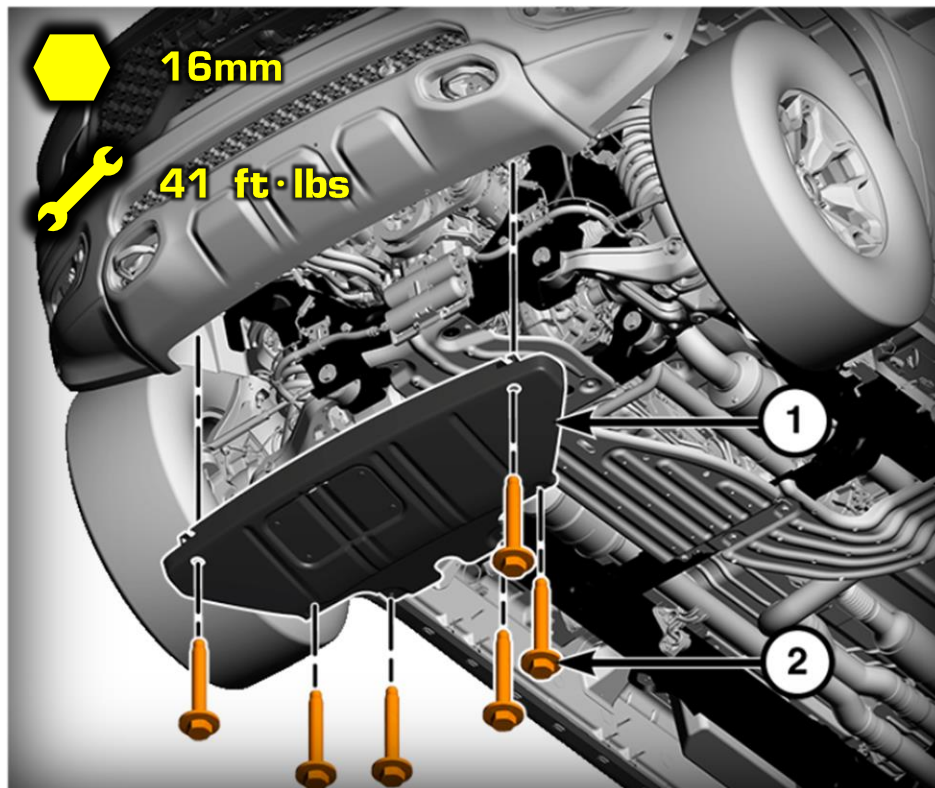




10. Reinstall the factory skid plate mounting brackets.



11. Reinstall the skid plate and torque these bolts to 41 ft/lbs. Make sure the long bolts are used on the rear most holes. You are now finished with the bull bar installation.





Mounting Lights

The Terra Guard bull bar has (4) light mounts on the top tube that handle large 9" pods and (2) on the lower tube that can fit 4" pods. We do offer a few accessories that can help fit your lights perfectly. We offer a light extension bracket kit (**79-91001**) that allows you to mount the lights forward if they get too close to the bumper. We also have a lightbar mounting bracket kit (**79-91002**) if you want to offset a light bar forward.



79-91001

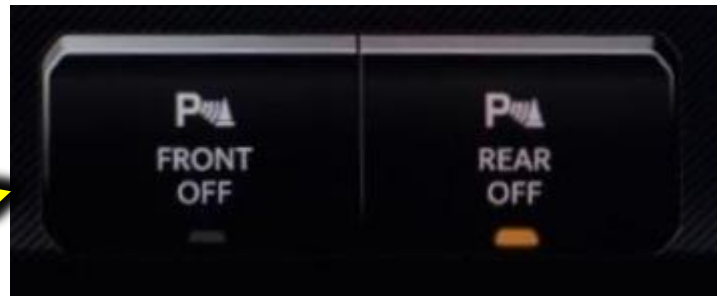
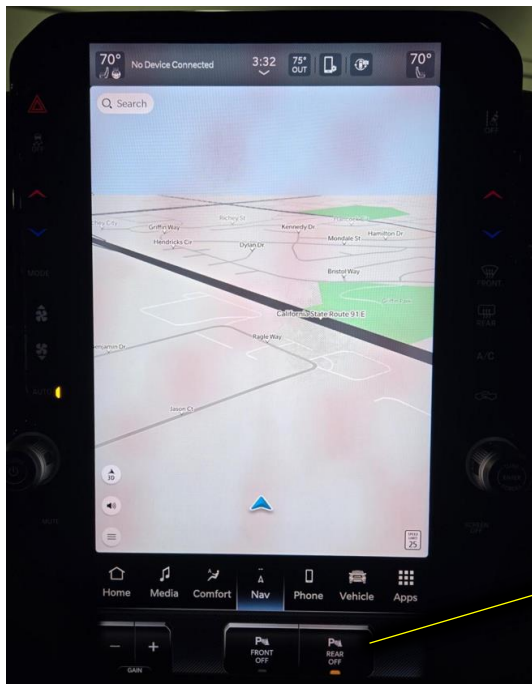


79-91002

Parking Sensors

Solution #1:

Because the bull bar sits in front of the bumper, it will unfortunately trigger the front parking sensors inadvertently. These are easy to turn off by simply pushing the "Parking Sensor FRONT OFF" button. Once off, they stay off and won't automatically turn back on after every key-on power up.





Solution #2:

Many customers would still like to use their parking sensors, and we do have a solution for you. Our sensor relocation kit (**79-91003**) will allow you to remount your parking sensors from the grill location to the front of the bull bar. Simply remove the sensors from the grill and install them into the aFe sensor pods. The pods attach to the bull bar tube and function as intended by the factory. As of the publication of this instruction sheet, these are still in development and may change in design.



79-91003

Coming Soon



LEFT INTENTIONALLY BLANK



LEFT INTENTIONALLY BLANK



advanced FLOW engineering, inc.