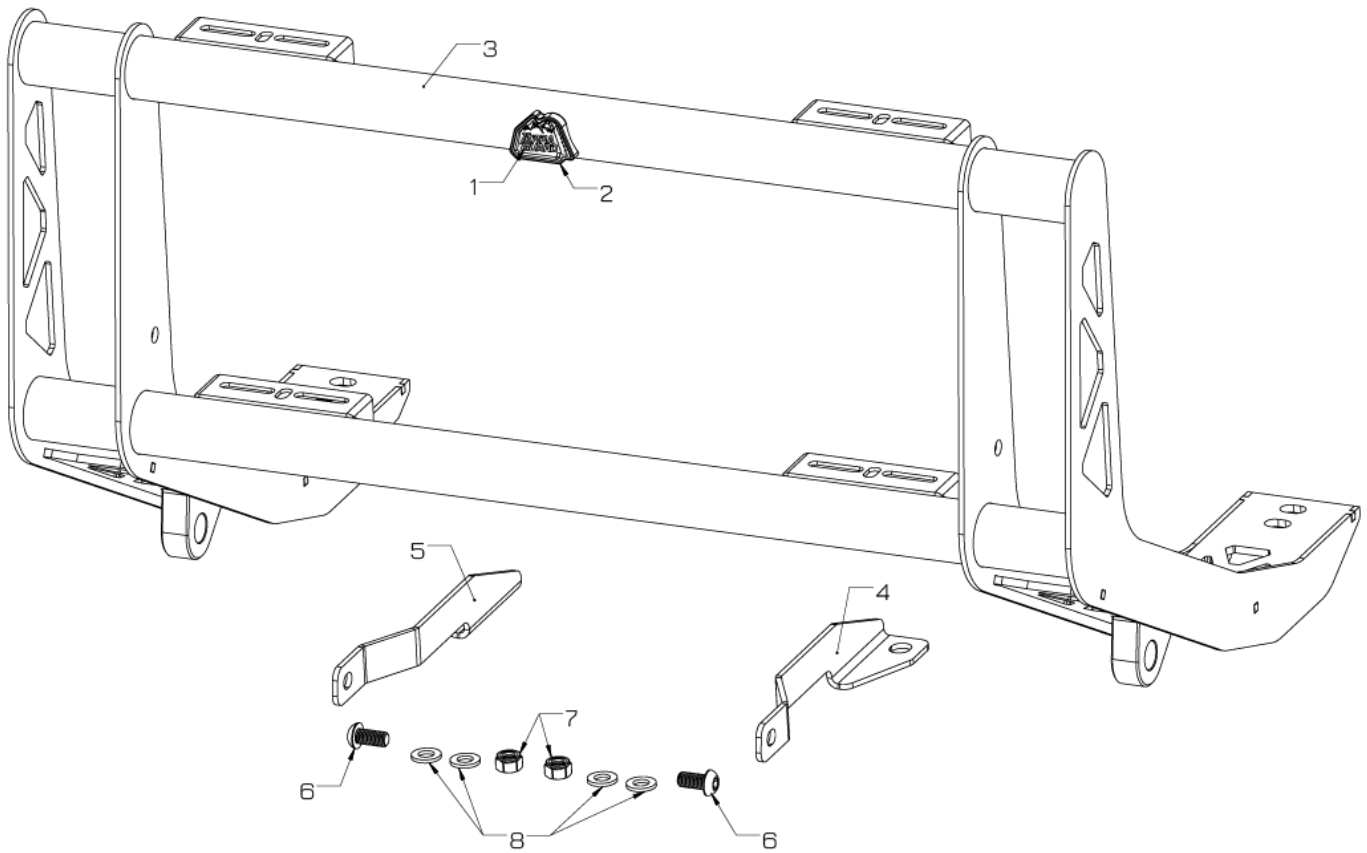




79-27021
aFe Power Terra Guard Bull Bar
Toyota Land Cruiser J250



Item	Description	P/N	Qty
1	Emblem, Terra Guard: 304SS (0.5mm 3M)	06-00238	1
2	Base, Terra Guard Badge, 2" OD	05-01791	1
3	Bull Bar, Assembly: LC250	05-61501	1
4	Bracket, LF Upper, Bull Bar: LC250	05-61502	1
5	Bracket, RT Upper, Bull Bar: LC250	05-61503	1
6	Screw, Button Head: M12 x 1.75 x 30mm SS Black	03-50813	2
7	Nut, Nylock: M12x1.75 SS Black	03-50814	2
8	Washer, Flat M12 SS Black	03-50815	4



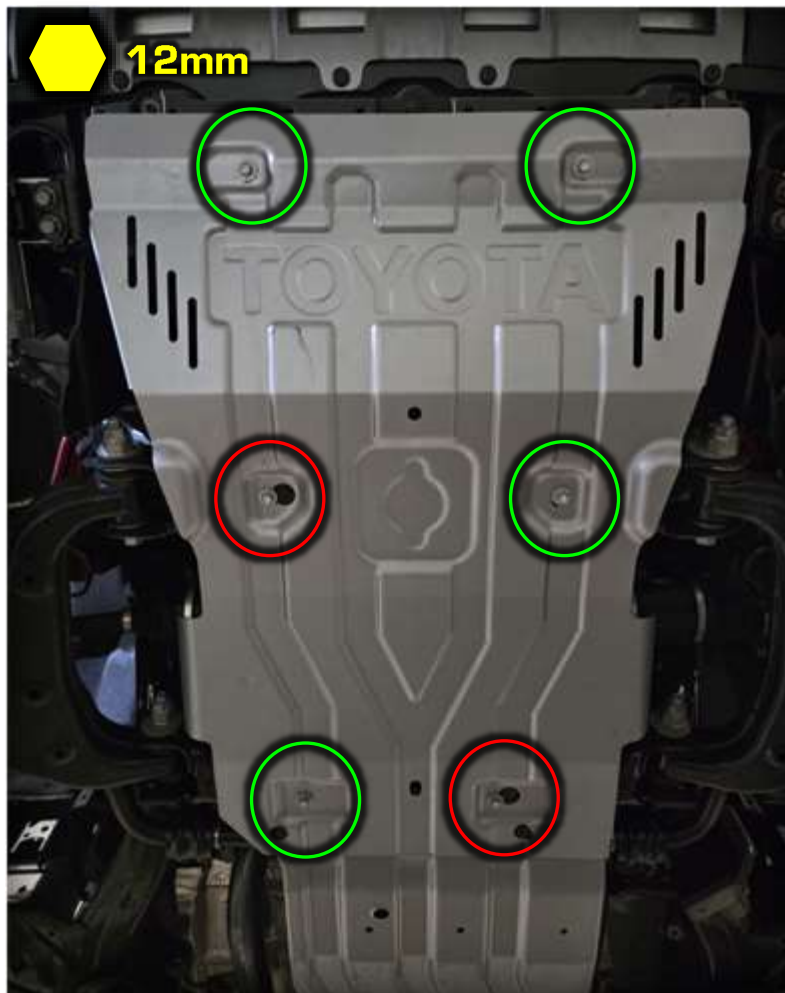
- Please read the entire instruction manual before proceeding.
- Ensure all components listed are present.
- For technical support please call 951-493-7185.
- Ensure you have all necessary tools before proceeding.
- Retain factory parts for future use.

Procedure:

1. This installation can be done with the vehicle on the ground. But, for an easier installation, use a vehicle lift.

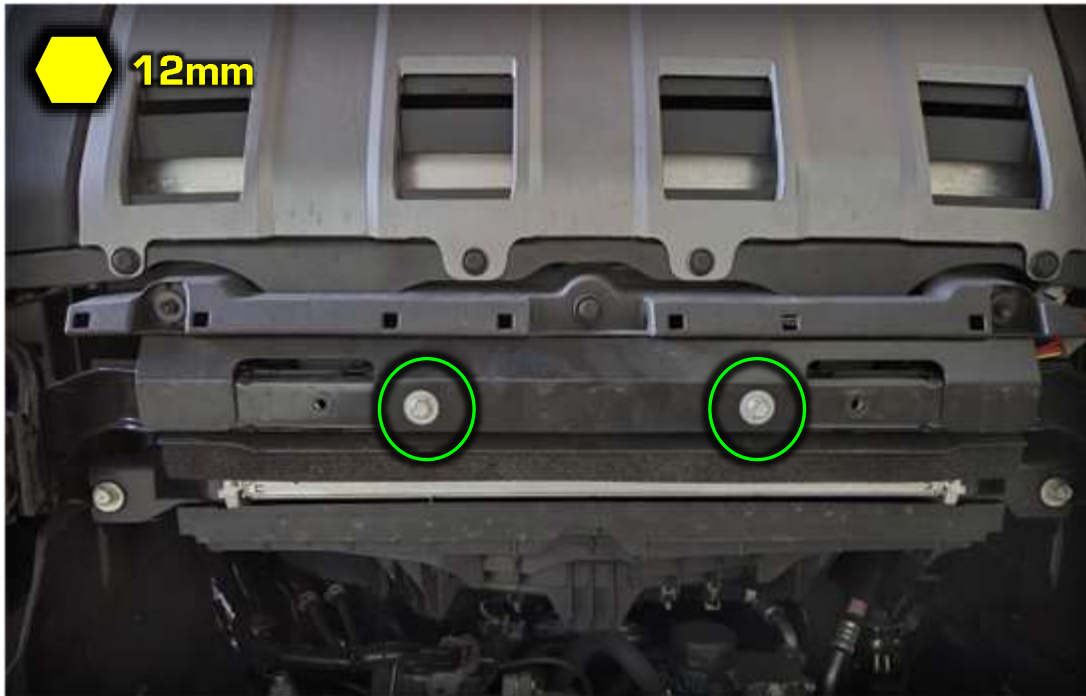


2. Remove the factory skid plate by removing the (4) bolts in green and loosen the (2) bolts in red. The skid plate should slide to the passenger side and drop.

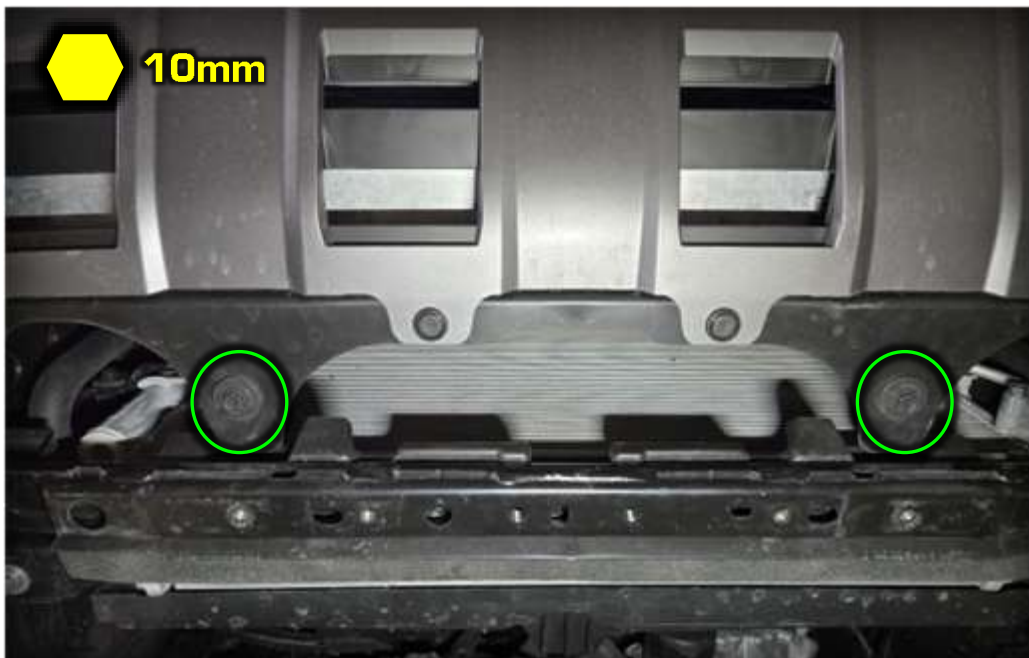




3. Remove the (2) silver bolts that hold the metal/plastic panel assembly.

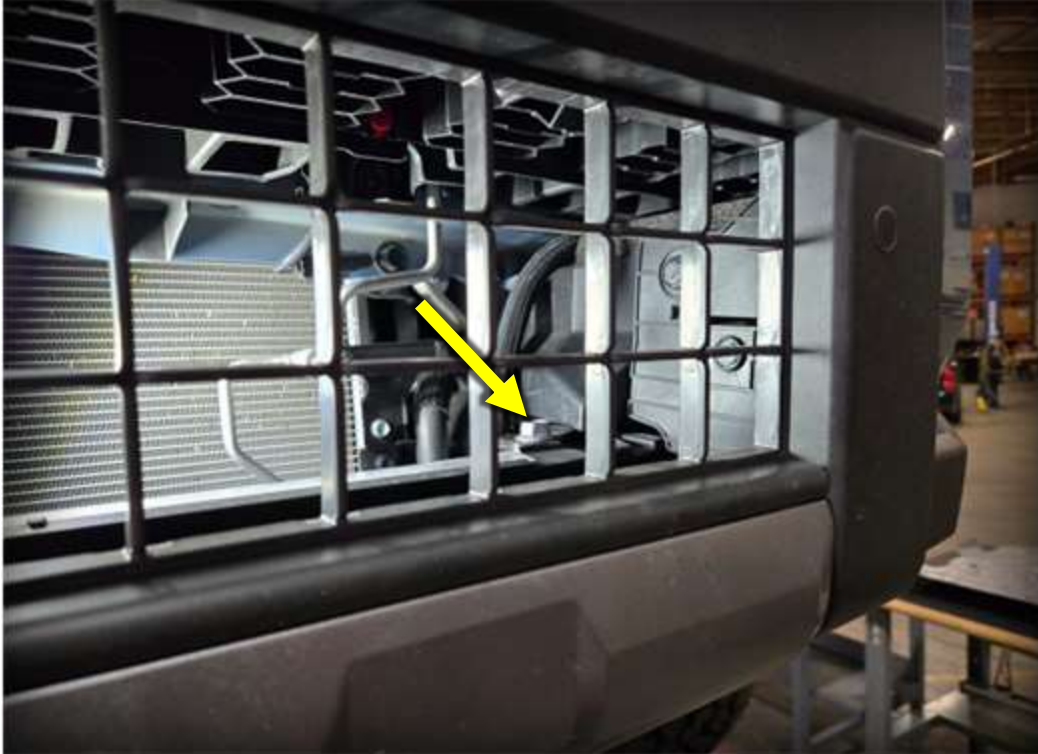


4. Remove the (2) black bolts at the bottom of the bumper. This will allow you to access the inside cavity of the bumper. Your hand/arm should be able to fit in between the bumper and radiator support.





5. Locate the bumper beam bolt located inside the bumper on the top of the beam on each side. Remove these bolts.





Install the aFe upper bracket (05-61502) on the driver side and bracket (05-61503) on the passenger side.



**Passenger Bracket
(05-61503)**

**Driver Bracket
(05-61502)**



Fish the bracket from the bottom into the inner cavity of the bumper.



Bracket should pop out of the bottom outer grill hole. Use the factory bumper beam bolt to fasten the bracket to the bumper beam but do not fully tighten yet.





Perform on both sides



6. Next, unbolt the (2) bolts holding each of the factory tow hooks. Remove on both sides. Factory tow hooks will not be re-installed but keep hardware.





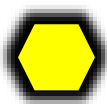
7. Place rags or towels over the top of the upper tube near the light tabs. This is to prevent scratches to the bumper during installation

Have a friend help lift the bull bar up to the car. Have the provided M12 button head bolts ready to install when lifting into place.





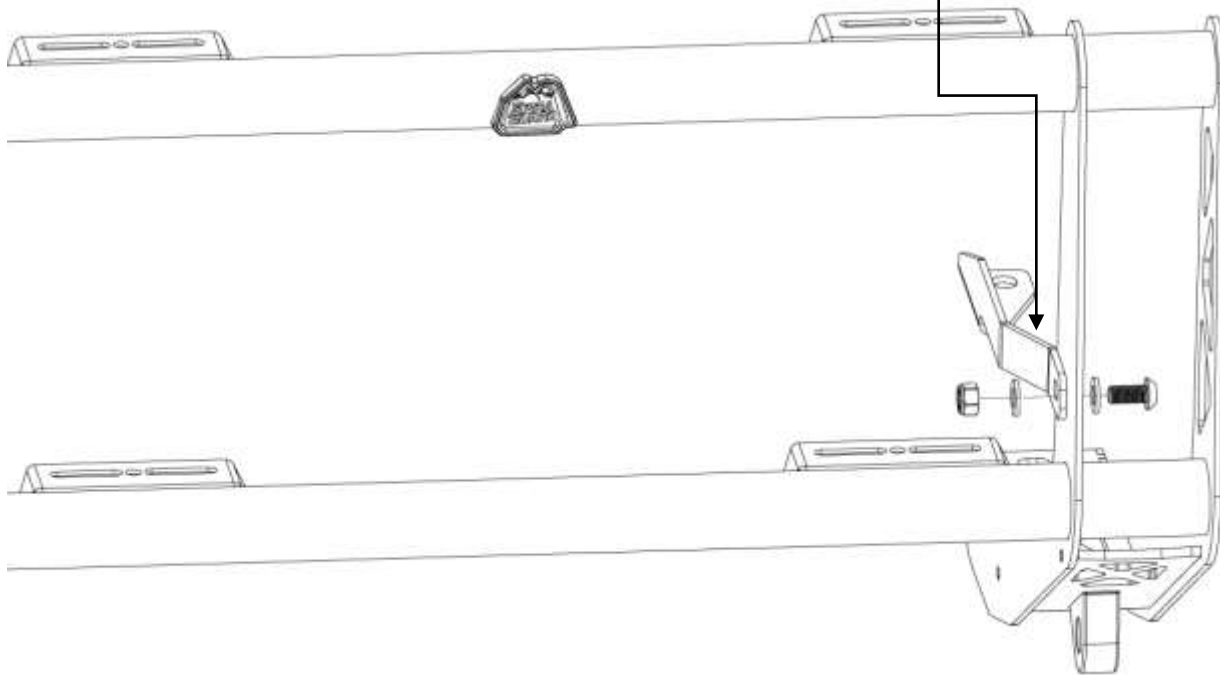
Install the M12 button head bolt with washer from the outside pointing inwards. The upper brackets reside **inboard** of the main bull bar upright plates. Install the remaining washer and nylock nut on the other end of the button head. Keep these finger tight for the time being. The upper brackets can hold the weight of the bull bar while you move onto the lower main mounting bolts.



8mm Allen

19mm Socket

**Brackets are
Inboard of the
Plate**





8. Install the factory bolts at the bottom tow hook location. Start the bolts by hand to avoid cross threading. The mounting holes on the bull bar are slotted, so you can center the bull bar with the bumper at this time. You will also want to pull the bull bar as far forward to ensure the light brackets are not touching the bumper. Tighten the lower bolts to **90 ft lbs**.



9. Tighten the remaining bolts:
- Bumper beam bolts **55 ft lbs**. (17mm socket)
 - M12 Button Head Bolts **55 ft lbs**. (8mm Allen/19mm Socket)





232 Granite St. Corona CA 92879 | aFePower.com | 951-493-7100



10. Lighting:

Refer to your specific light manufacturer installation instructions when installing light pods and light bars. Recommended setup below shows (4) 6" light pods and (1) 20" light bar. When mounting lights make sure they do not block the radar sensor (just above top tube in the center) or the front camera.



Mounting Lights

We offer a light extension bracket kit (79-91001) that allows you to mount the lights forward if they get too close to the bumper. We also have a lightbar mounting bracket kit (79-91002) if you want to offset a light bar forward.





advanced FLOW engineering, inc.