

ROUGH COUNTRY

SUZUKI 2018-UP JIMNY LED FOG LIGHTS

Thank you for choosing Rough Country for all your vehicle needs.

Please read instructions before beginning installation. Check the kit hardware against the kit contents shown below. Be sure you have all needed parts and know where they go.

If questions exist, please call us @1-800-222-7023. We will be happy to answer any questions concerning this product. Check all fasteners for proper torque. Check to ensure adequate clearance between all components. Periodically check all hardware for tightness.

Tools Needed:

**Pry Tool
10mm Socket or Wrench
Phillips Screwdriver**



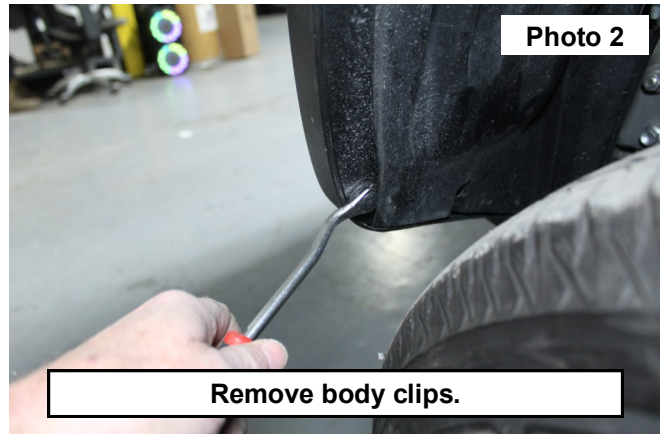
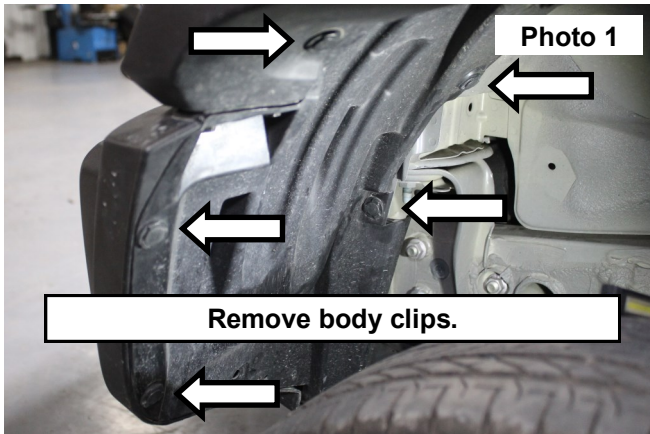
Torque Specs:

Size	Grade 5	Grade 8	Size	Class 8.8	Class 10.9
5/16"	15 ft/lbs	20ft/lbs	6MM	5ft/lbs	9ft/lbs
3/8"	30 ft/lbs	35ft/lbs	8MM	18ft/lbs	23ft/lbs
7/16"	45 ft/lbs	60ft/lbs	10MM	32ft/lbs	45ft/lbs
1/2"	65 ft/lbs	90ft/lbs	12MM	55ft/lbs	75ft/lbs
9/16"	95 ft/lbs	130ft/lbs	14MM	85ft/lbs	120ft/lbs
5/8"	135ft/lbs	175ft/lbs	16MM	130ft/lbs	165ft/lbs
3/4"	185ft/lbs	280ft/lbs	18MM	170ft/lbs	240ft/lbs

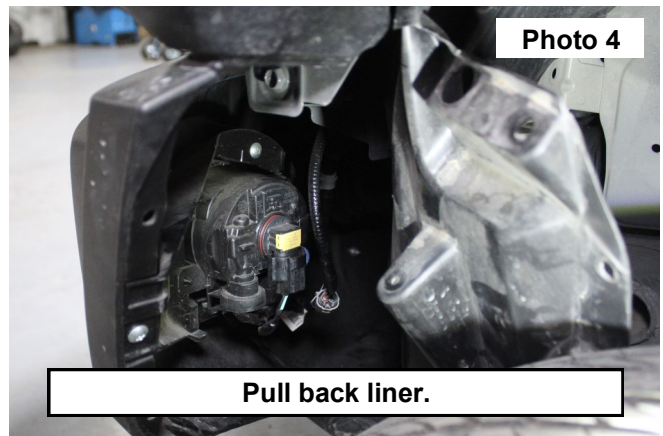
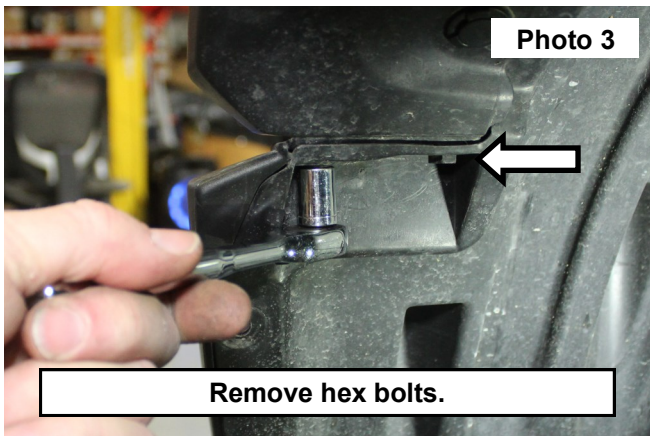


INSTALLATION INSTRUCTIONS

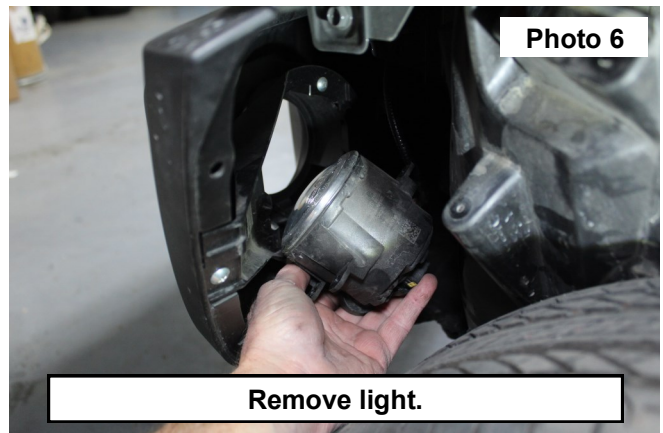
1. Using a pry tool, remove (5) body clips on the front of wheel well liner. Retain hardware for later use. See **Photo 1** and **Photo 2**.



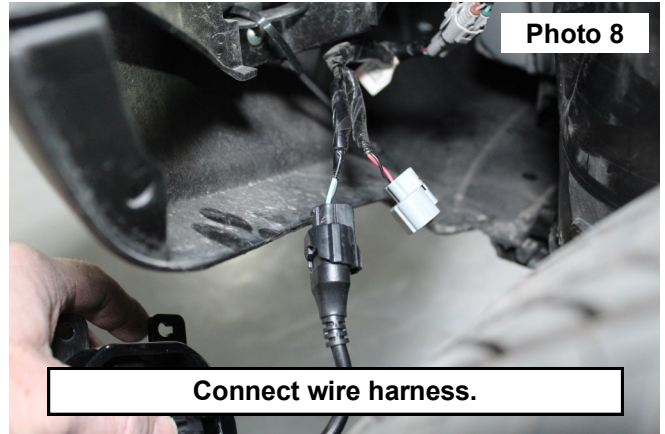
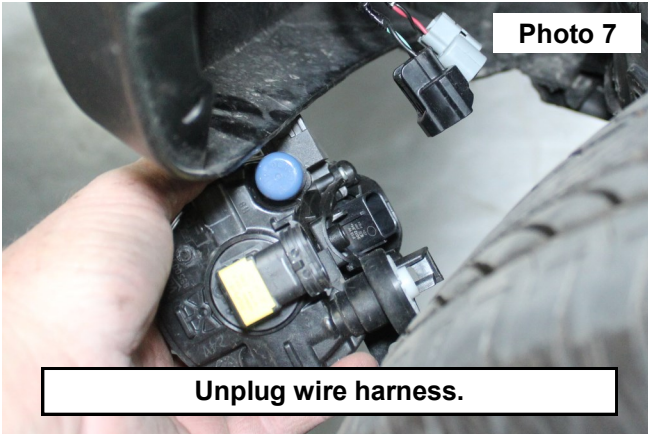
2. Using a 10mm socket, remove (2) bolts holding the liner to the bumper. Retain hardware for later use. See **Photo 3**.
3. Pull liner back exposing the factory light. See **Photo 4**.



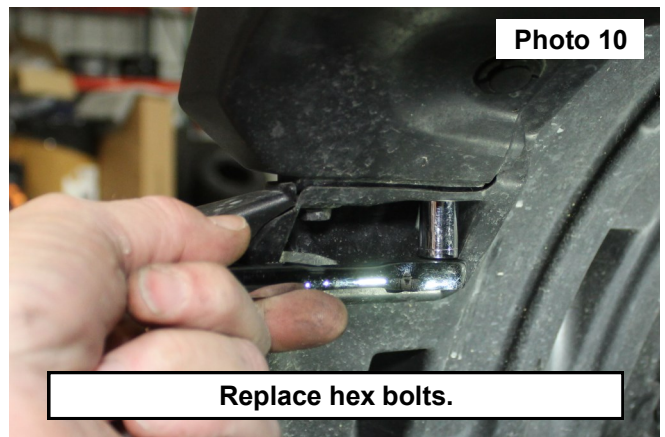
4. Using a Phillip's screwdriver, remove factory light. Retain hardware for later use. See **Photo 5**.
5. Remove light from bumper. See **Photo 6**.



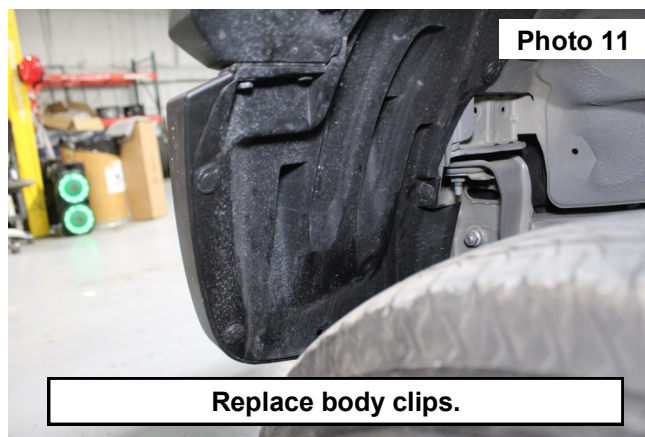
- Unplug both wire harnesses on light. **See Photo 7.**
- Plug RC LED light into corresponding wire harness. **NOTE: RC light will only use (1) harness. See Photo 8.**



- Using the Phillip's screwdriver, mount light into bumper. **See Photo 9.**
- Pull the liner back and replace hex bolts using a 10mm socket. **See Photo 10.**



- Replace body clips in liner. **See Photo 11.**
- Repeat steps 1-10 on PASS side.



By purchasing any item sold by Rough Country, LLC, the buyer expressly warrants that he/she is in compliance with all applicable, State, and Local laws and regulations regarding the purchase, ownership, and use of the item. It shall be the buyer's responsibility to comply with all Federal, State and Local laws governing the sales of any items listed, illustrated or sold. The buyer expressly agrees to indemnify and hold harmless Rough Country, LLC for all claims resulting directly or indirectly from the purchase, ownership, or use of the items.

