



**WARNING:** This product contains a chemical known to the State of California to cause Cancer and Reproductive Harm. For more information, go to [www.P65Warnings.ca.gov](http://www.P65Warnings.ca.gov).

## 2007-2018 JEEP JK 4 DOOR FRONT INNER WHEEL WELL LINER

**PLEASE READ INSTRUCTIONS CAREFULLY BEFORE STARTING THE INSTALLATION.  
NOTE: FOR EASIER INSTALLATION, REMOVE THE TIRE.**

**IMPORTANT NOTE: THESE INNER WHEEL WELL LINERS ARE DESIGNED TO BE USED WITH  
ROUGH COUNTRY'S HIGH CLEARANCE FLAT FENDER FLARE KIT (PART 99037).**

**THESE PARTS WILL NOT WORK WITH FACTORY FLARES.**

**IF YOU HAVE ANY OTHER AFTERMARKET OR OE FENDER FLARES, SOME MODIFICATION  
MAY BE NECESSARY TO COMPLETE THE INSTALL.**

### INCLUDED IN HARDWARE KIT:

1.



Driver Side & Passenger Side Liner  
1 pr

2.



6mm-1.0 x 20mm Screw  
8 pcs

3.



6MM Body Clip Nut  
2 pcs

### TOOLS NEEDED:

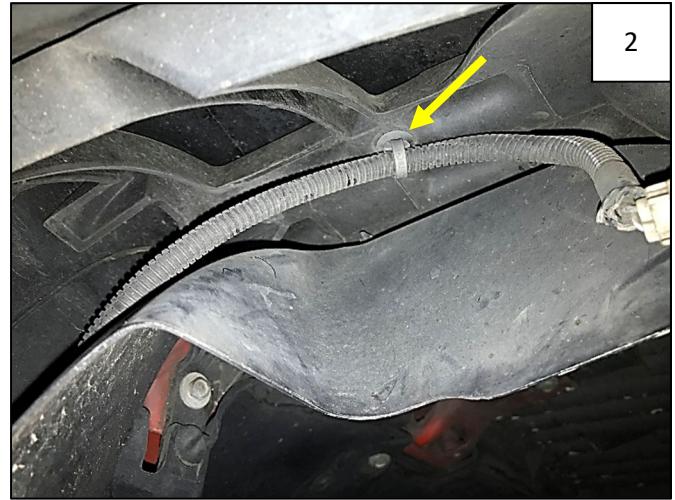
Gloves  
Awl  
Grease Pencil  
Pliers (optional)

Pry Tool  
4mm Allen Wrench  
Drill with 1/2" Bit

## FACTORY FLARE REMOVAL AND WHEEL WELL LINER INSTALLATION



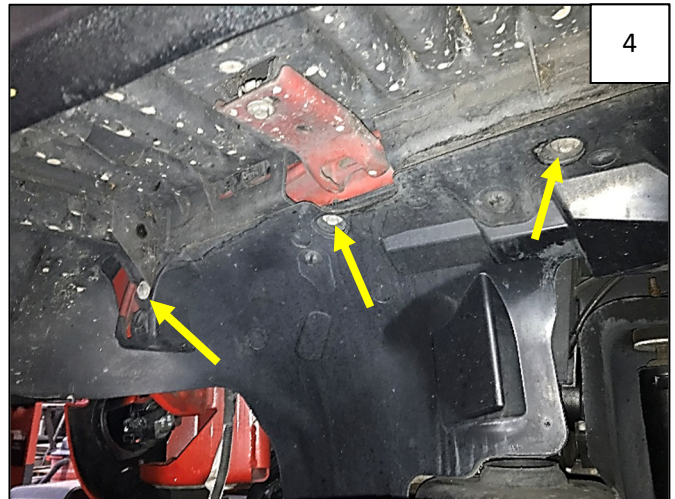
Aftermarket flare removal may differ. For factory flares, disconnect the side parking light from the wire harness on the fender.



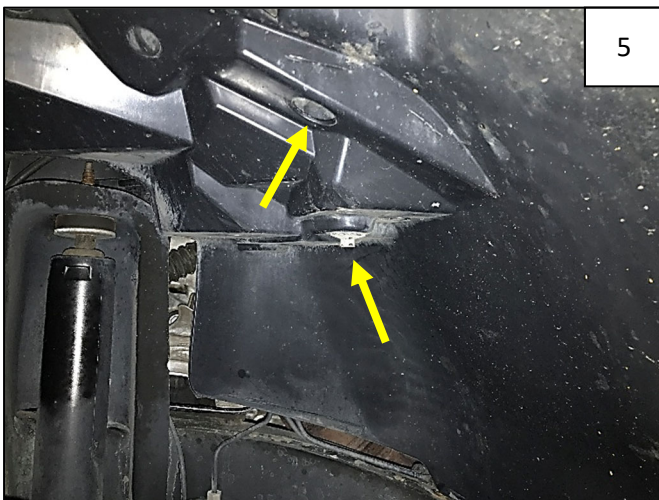
Using a pry tool, disengage the Christmas tree fastener holding the wire harness clip to the inner fender bracket.



Using a 10mm socket, remove the bolt from the inner fender bracket.



Using a 10mm socket, remove three factory bolts indicated by arrows.



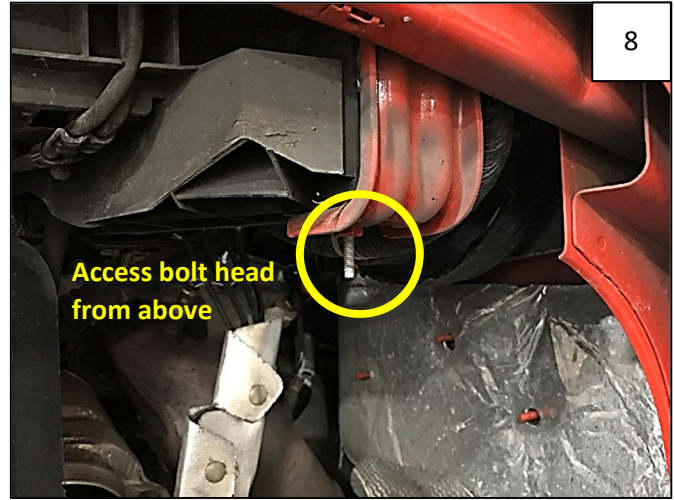
With the 10mm socket, remove two factory bolts indicated by arrows (one bolt is inside a recessed pocket).



Starting at front of factory flare, pull flare firmly away from vehicle. Internal clips will snap and break.



Once flare is removed, use a pry tool or pliers to remove any remaining factory clips.



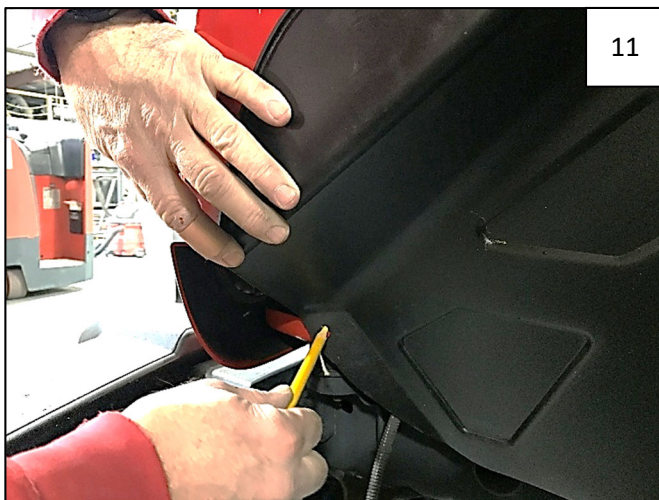
Use a 10mm socket with extension to back out the long bolt that is now protruding into the wheel well. This bolt does not need to be removed entirely, as long as it is backed out enough to become flush with nut it is seated in. The bolt can be accessed from above.



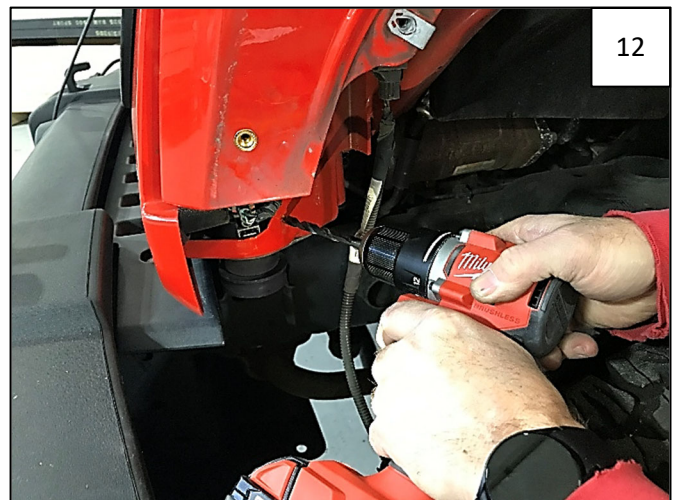
Slide the Wheel Well Liner behind the wheel. Slip the rear panel of the Wheel Well Liner between sheet metal at rear of wheel well.



Use an awl to help locate fastening holes in fender. Install one supplied 6mm-1.0 x 20mm Screw through hole located in upper portion of wheel well liner. Do not tighten.



Hold Wheel Well Liner firmly in alignment and use a grease pencil to mark forwardmost hole location for drilling in the next step.



Remove the screw installed in Step 10 and remove the Wheel Well Liner. Use a drill with 1/2" bit to drill a hole centered on the mark made in Step 11.



Slide a supplied 6mm Body Clip Nut over hole drilled in Step 12. Flat side of clip will face out.



Reposition Wheel Well Liner, making sure to tuck rear portion between sheet metal once more. Make sure that light wire harness is accessible through gap in part near inner fender bracket.



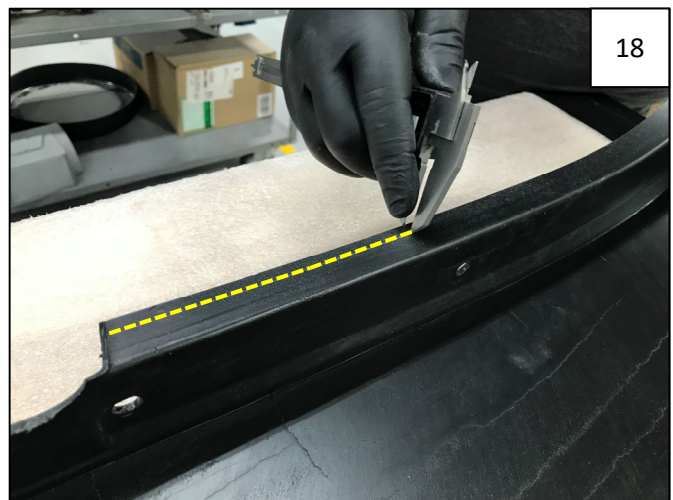
Install and hand tighten four screws in locations shown, using an awl to help locate holes as you go. Once all screws are installed, use a 4mm Allen Wrench to tighten all screws.



This is the point where you will install your High Clearance Flat Fender Flare Kit (Part 99037). Next are a few tips for success.



The fender flare may need to be trimmed prior to installation, to fit well with Wheel Well Liner. Hold the flare on the fender to check. The area between arrows may need to be trimmed.



If trimming is needed, scribe a 1/4" line along edge of flare as shown.



Use a utility knife to trim along scribe line.



Install flares to instruction for 99037. The front of the flare will tuck slightly under the Wheel Well Liner (ahead of inner fender bracket) as shown. Use a pry tool to help seat the part.



Completed Wheel Well Liner and Flare 99037 installation. Repeat for other side.