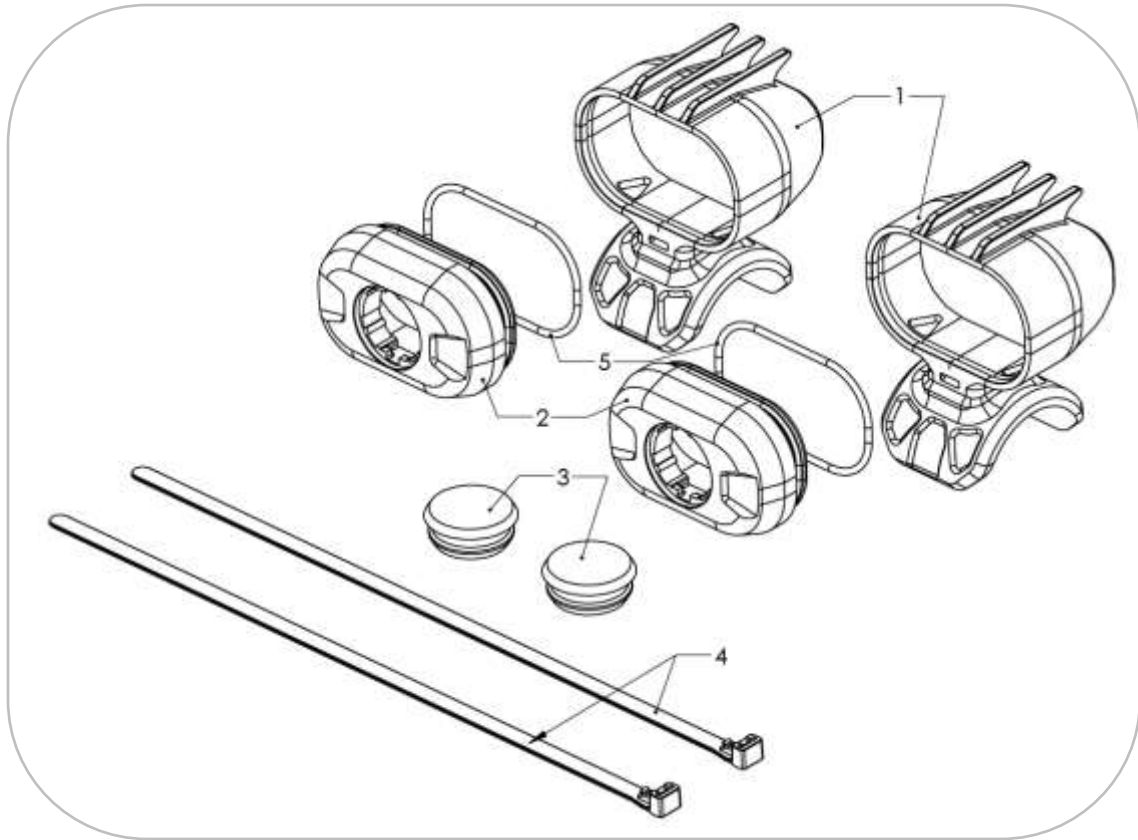




## 79-91003 aFe Power Terra Guard Sensor Relocation Kit



Item	Part #	Description	Qty.
1	05-61688	Sensor Housing	2
2	05-61689	Sensor Face	1
3	05-61692	Sensor Cap	2
4	03-50819	Zip ties	2
5	OOP-OC1711-A	O-Ring	2

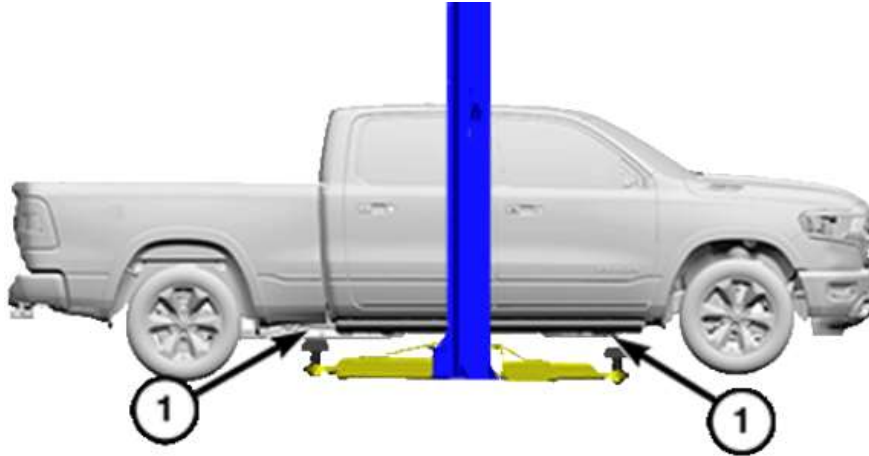




- Please read the entire instruction manual before proceeding.
- Ensure all components listed are present.
- For technical support please call 951-493-7185.
- Ensure you have all necessary tools before proceeding.
- Retain factory parts for future use.

**Procedure:**

1. This installation can be done with the vehicle on the ground. But, for an easier installation, use a vehicle lift.



*1-Frame Lift Point*

2. Locate parking sensors; to remove sensors you can reach into grill and push up on top and bottom tabs (away from each other) then push in sensor **IN** to remove from housing (it is important you do not force sensor out to not break any plastic trim). Use photos as reference.





3. Then remove plastic trim that is around the sensor you will need to up pull straight out. Once removed, please mark the trim top and keep note of which side you have removed from. (use 2 different color markers to tell which was removed, ex. Yellow is drivers 'side and blue is passenger side).





Next, feed the sensor through grill and unplug harness from sensor, pull the white tab out (should hear a click) then press down on the tab while pulling the connector out.



Fish the harness clip through the grill opening just below the sensor hole.

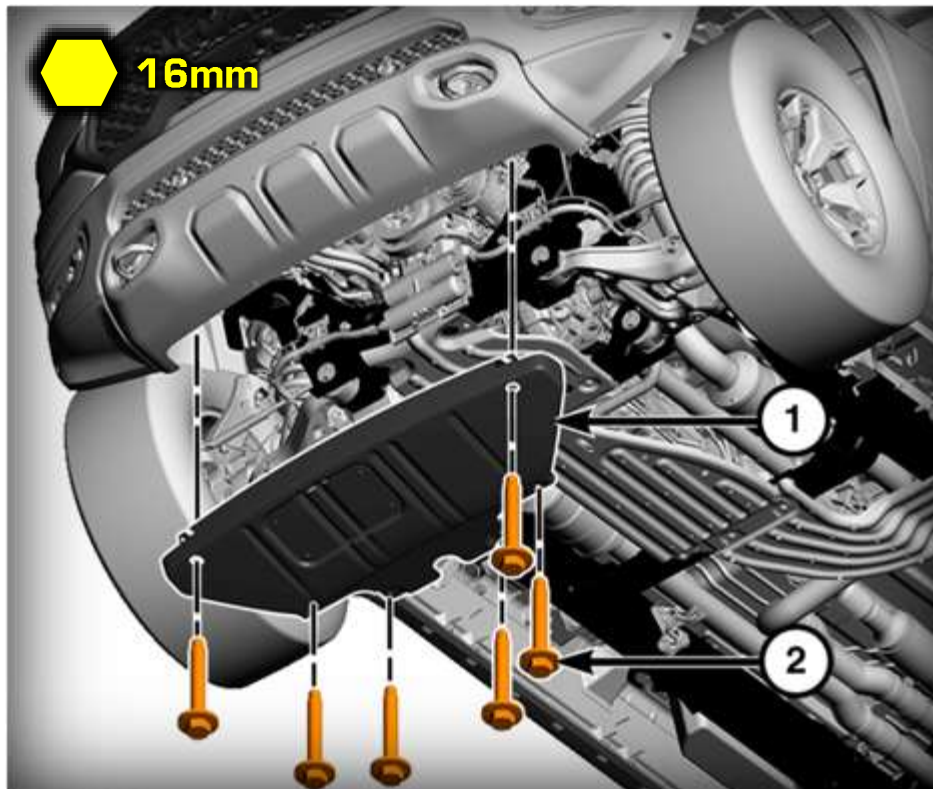




With the sensor removed, mark the top of the sensor keep track of orientation and side designation.



4. Remove the skid plate by unfastening (6) bolts. 16mm socket





5. With the skid plate removed you can access underneath your truck and pop the wire harness zip tie clip with a pry tool. This will give some slack for the sensor wire to reach forward.





6. Next, once everything is removed you can use provided Sensor Cap and plug in the original sensor location.





7. Install the provided o-ring on to the aFe housing face.

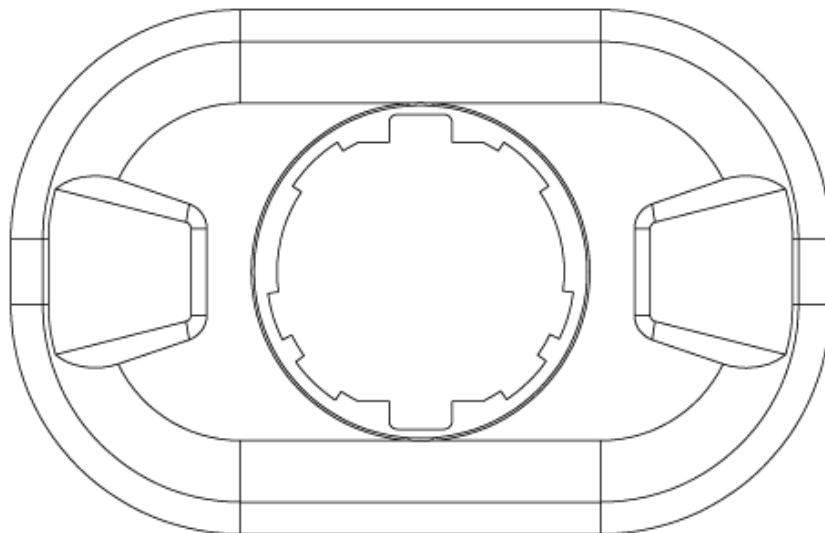




8. Next, take the **aFe housing face** and install the **sensor trim** and **sensor** in the same orientation as you marked in the up position. Note the aFe housing face has a top direction



TOP





9. Once, sensor and face plate are installed take the aFe power **sensor housing** and fish wire through rear hole, then you may plug in connector (make sure you push in locking pin once plugged in). then you can push sensor face into sensor housing.

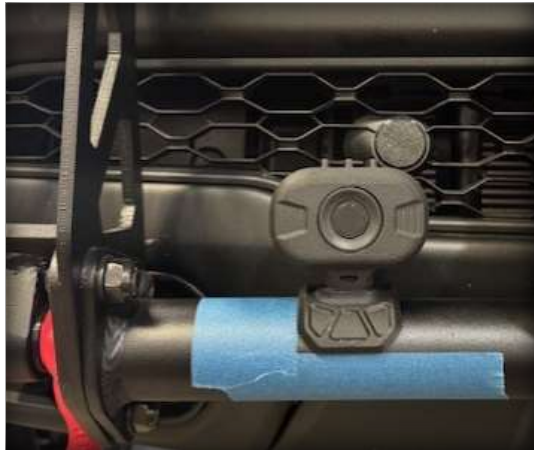




## 10. Mounting with No Lights

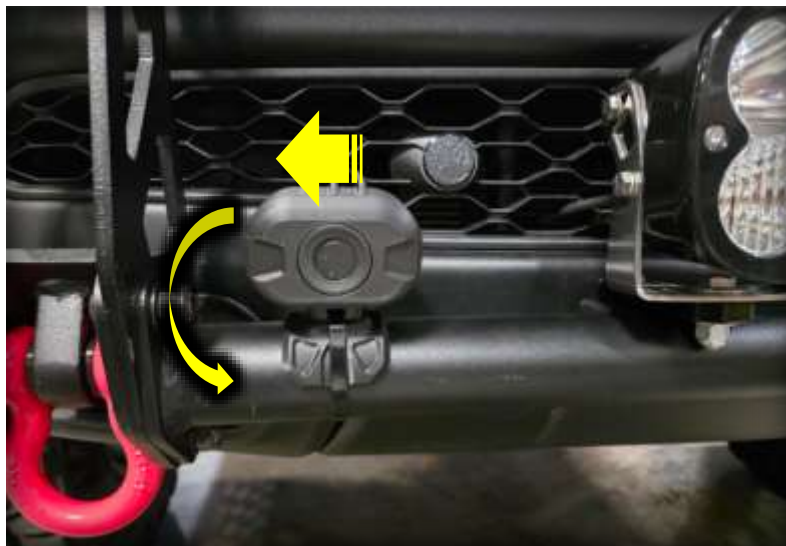
Mount aFe Power sensor housing onto your aFe Power Bull Bar we recommend before mounting to measure each side your preferred distance on each side to get sensor housing at equal distances and mark with blue painter's tape.

Once you have your horizontal distances, we also recommend using a level that will get the housing level with the ground. Mark position with masking tape as well.



## Mounting with Lights

If you are mounting the sensors and have lights already installed, depending on the light shape and how much the light pod protrudes forward, you may need to mount the sensors further outward (away from the light) and/or angle them down slightly. Use the included removable zip tie to temporarily mount them so you can test if the sensors are going off from the lights. With the truck ON and putting it into "Drive" will tell you immediately if the sensors are picking up the lights with a beep and warning on the dash.





11. Once you have your position set you may peel the 3M backing off and mount your aFe power Sensor housing kit. Then install the provided zip ties for a more secure fit. You are now finished with the install.





LEFT INTENTIONALLY BLANK



LEFT INTENTIONALLY BLANK



LEFT INTENTIONALLY BLANK



*advanced FLOW engineering, inc.*