



## 2017 – 2007-PRESENT, MERCEDES SPRINTER 3500 SUSI ADAPTER

Version 1.1

### General Notes

- For the most up to date and current instructions, please visit our website at [www.vancompass.com](http://www.vancompass.com)
- Please read all instructions thoroughly before starting installing Van Compass products.
- Kit can be utilized on both RWD or 4x4 / AWD models
- Instructions document installation on a 2025 AWD 3500 chassis
- This adapter converts a DRW 3500 van to the 2500 series wheel pattern to allow for a “square” wheel setup that utilizes the standard 2500 series lug pattern at all 4 corners of the vehicle. Ensure that the 2500 series wheel and tire being utilized has sufficient load rating for the weight of the vehicle.
- We recommend Van Compass wheels as they are specifically engineered for a 4200 lb load capacity per wheel.
- This kit can be completely removed and the vehicle can be returned to stock configuration if desired.

### Parts List

#### 2017 – 2007-PRESENT, MERCEDES SPRINTER, 3500 SUSI ADAPTER

- (2) 201701 MERCEDES SPRINTER 3500 SUSI ADAPTER
- (4) 201702 MERCEDES SPRINTER, DUAL TPMS ADAPTER, 2007-2022
- (4) 201703 MERCEDES SPRINTER, DUAL TPMS ADAPTER, 2023+
- (2) BM06-1.00-12 M6-1.0 X 12MM LONG BUTTON HEAD SCREW
- (2) NFM06-1.0 FLANGE NUT, M6-1.0 CLEAR ZINC
- (4) SM05-0.80-12 M5-0.8 X 12MM LONG SOCKET CAP SCREW
- (2) NNM05-0.8 NYLOCK NUT, M5-0.8 CLEAR ZINC
- (1) LT-RL02 .5ML CAPSULE 242 HIGH STRENGTH LOCTITE

### Tools Needed

- Simple hand tools:
  - Torque Wrench
  - Floor jack and jack stands
  - Basic wrench and socket set:
    - Metric sizes: 19mm

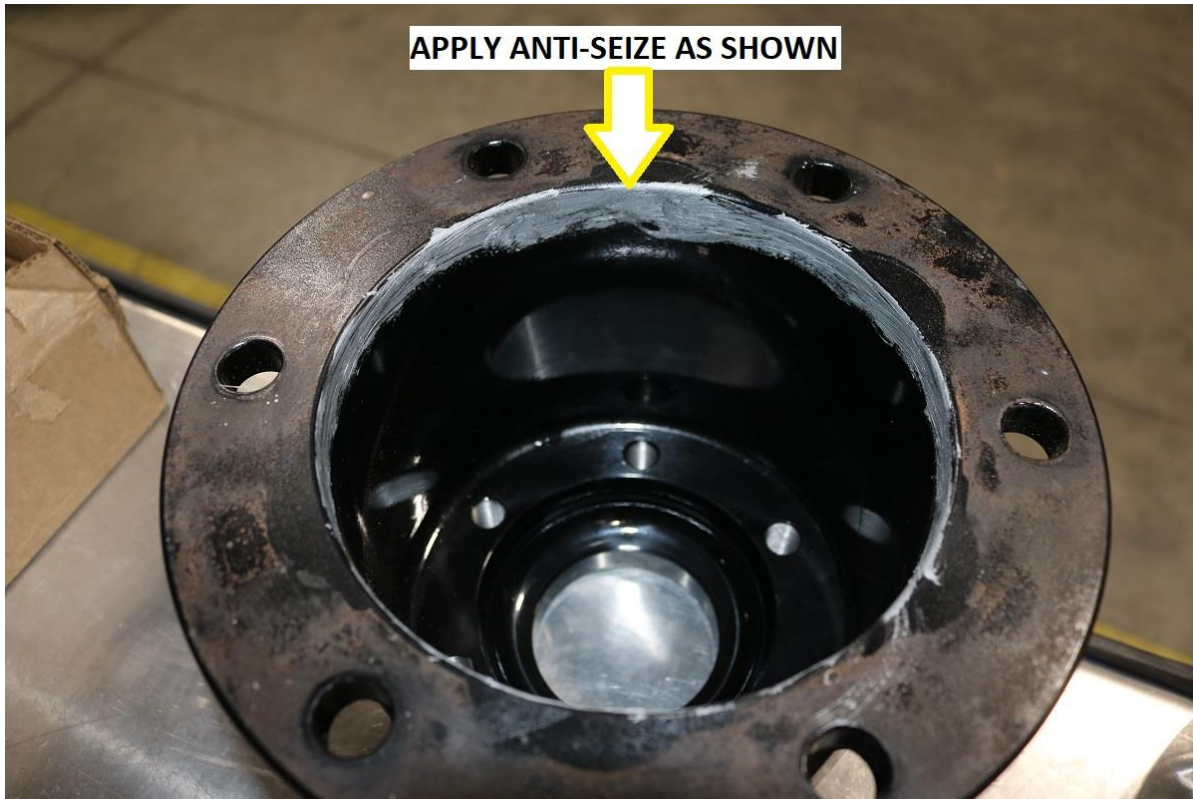
### Approximate Installation Time

- Professional shop with automotive lift: 30min - 1 hour
- Driveway install with floor jack: 1 – 1.5 hours

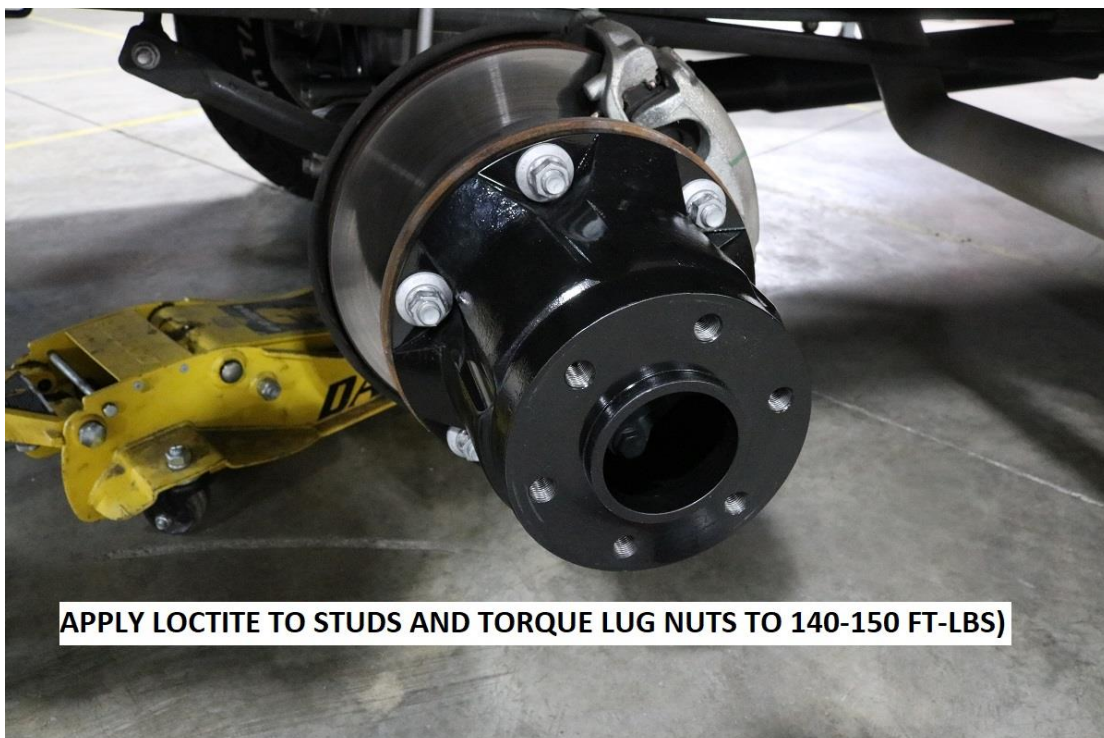
### Installation

- 1) We recommend installing this kit one wheel at a time. Starting at the rear of the vehicle, safely jack up and support one corner of the vehicle to allow the rear wheels to be removed.

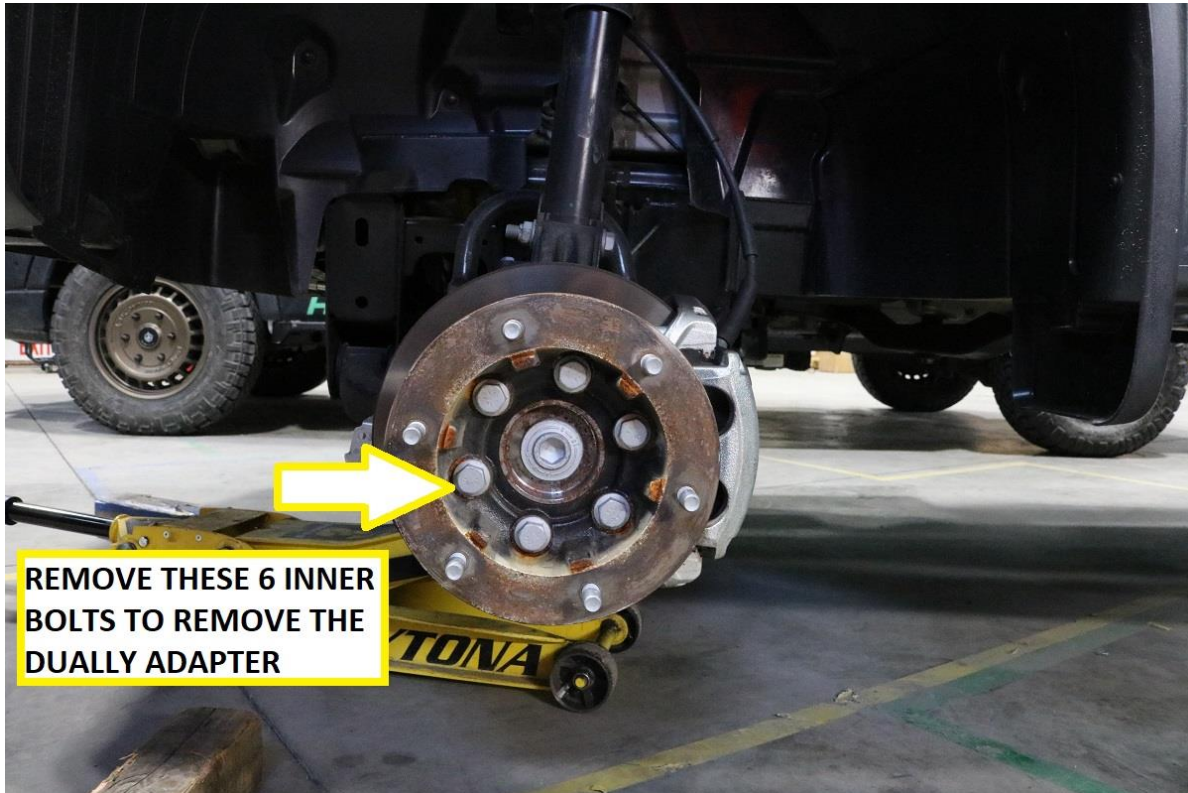
- 2) With the wheel off, thoroughly clean the hub face of any heavy surface rust or corrosion buildup. In most cases a quick spray & wipe with brakekleen will suffice.
  - a. Older vans or vans in northern climates may require a quick scrub with scotchbrite or fine sandpaper may be required to ensure a smooth mounting surface for the adapter.
- 3) Apply anti-seize to the inner ring of the wheel adapter that sits on the hub flange. See image below for reference.



- 4) Fit the adapter to the hub using the OEM lug nuts. Use a dab of red Loctite on the wheel studs and torque to 140-150 ft-lbs (190-200 N.m) in a criss cross pattern.



- 5) With the wheel adapter torqued to spec, fit the 2500 series wheels to the vehicle and torque to the wheel mfg's specifications. For Van Compass wheels, torque to 125 ft-lbs (169 N.m)
- 6) Repeat this process on the other side of the vehicle.
- 7) Move to the front of the vehicle. Lift and support the vehicle to allow the front wheel to be removed.
- 8) With the wheel off, remove the OEM dually adapter. Use an 19mm socket and remove the 6 bolts securing the dually adapter to the front of the vehicle.
  - a. Note you may need to utilize a dead blow to tap off the dually adapter as it is a perfect slip fit onto the hub face.



- 9) With the front dually adapter off, thoroughly clean the hub face of any heavy surface rust or corrosion buildup. Again, in most cases a quick spray & wipe with brakeklean will suffice.
  - a. Fit the 2500 series wheels to the vehicle and torque to the wheel mfg's specifications. For Van Compass wheels, torque to 125 ft-lbs (169 N.m)
- 10) Double check all torque specs after 100 miles of driving.

### **TPMS ADAPTER INSTALL**

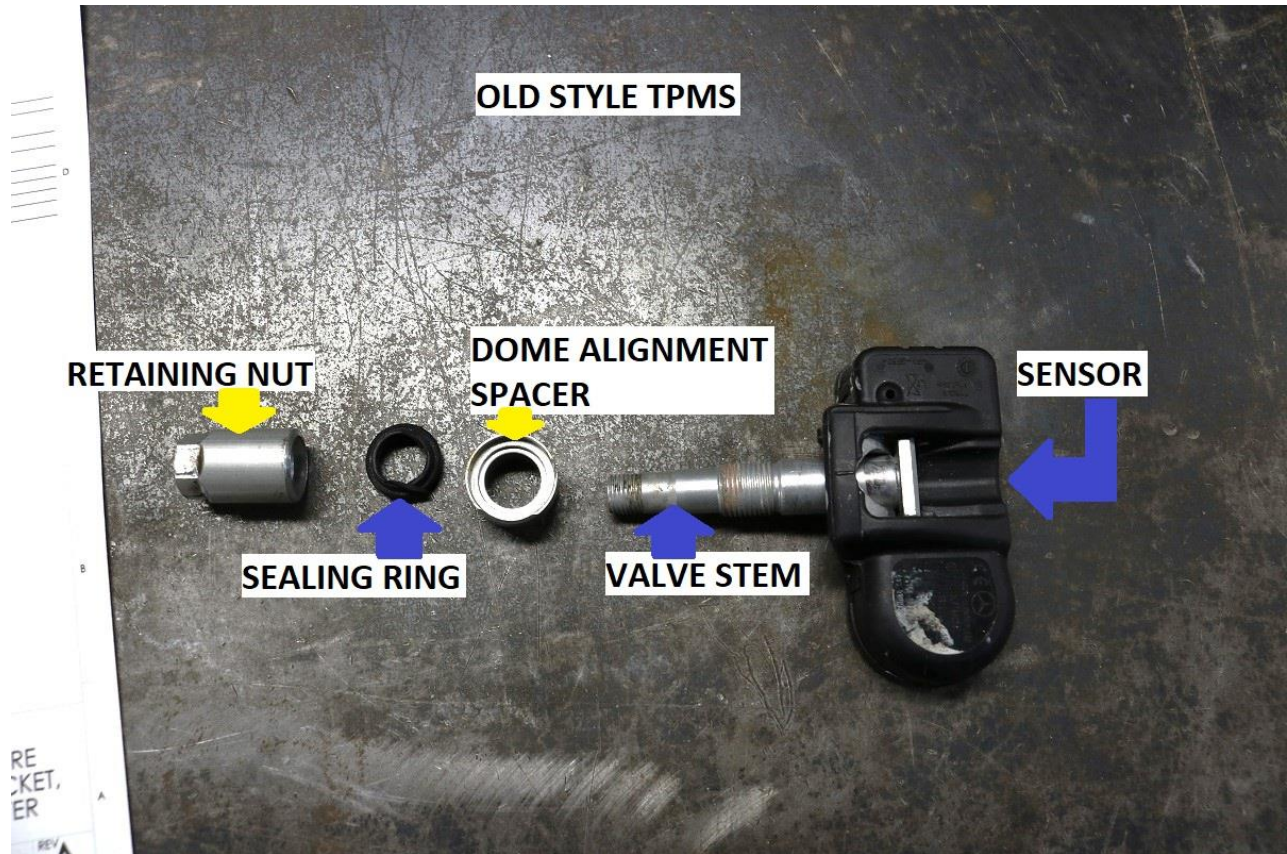
11. Begin by determining which style TPMS the vehicle has. Older NCV3 and early VS30 vans will likely have the older style TPMS. Late model VS30 & AWD vans will feature the newer style TPMS. See comparison image below for reference.



12. Skip to step 18 for **NEW** style TPMS installation.

13. Remove the valve stem assembly on one TPMS. To do so, follow steps below.

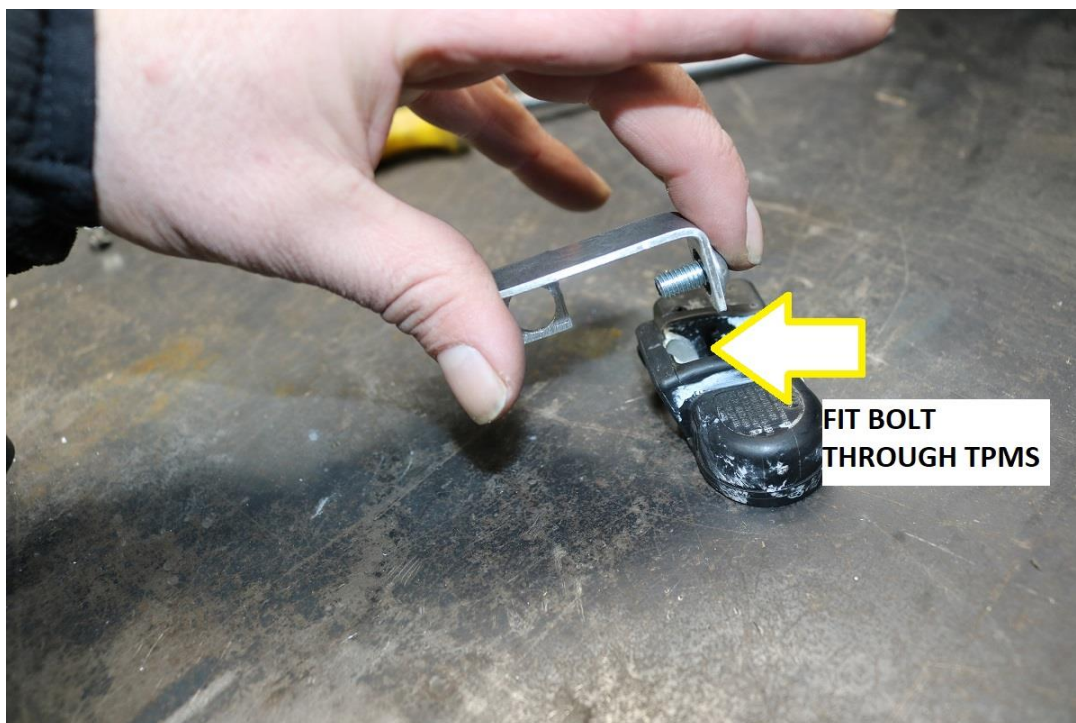
- a. Remove the threaded nut which attached it to the wheel (should be removed already from dismounting)
- b. Press / twist the dome shaped spacer. Note, this is not threaded on, the rubber sealing ring is what keeps it in place.
- c. Remove the valve stem from the sensor assembly itself.



14. Note the TPMS bracket for the older style sensor is the one with the larger holes.

15. Use the included M6-1.0 x 12mm long button head screw through the long side of the bracket as shown.

- a. Fit the bolt through the TPMS and secure it with the included M6-1.0 flange nut as pictured below.
- b. Note the Flange nut orientation so the hex side of the nut fits down into the “bowl” of the TPMS.

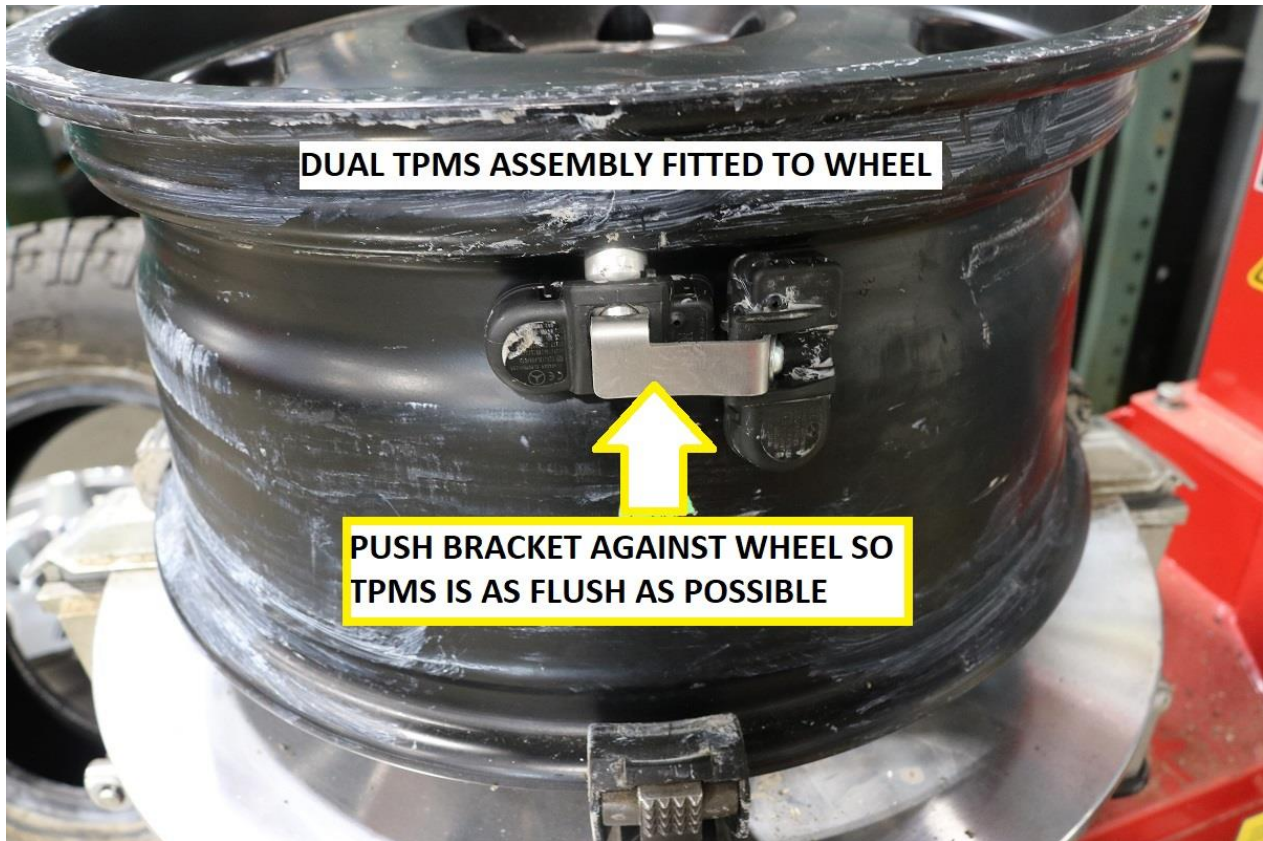




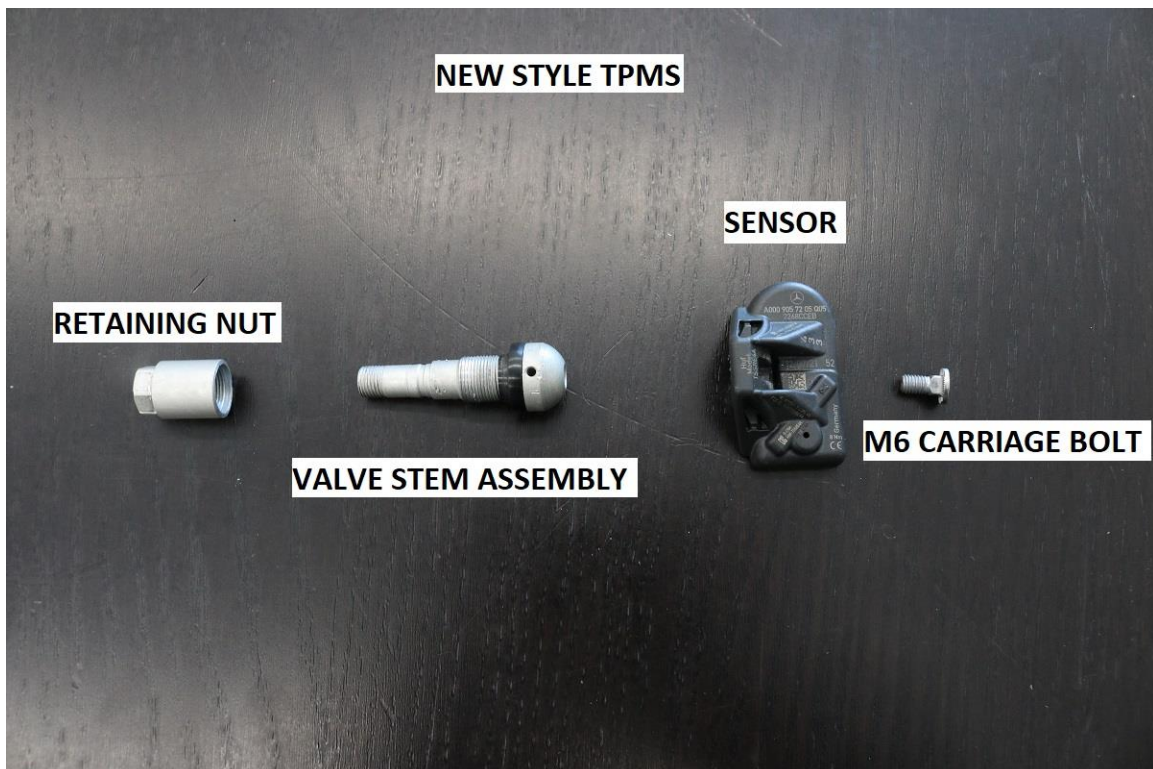
16. Repeat the process of removing the valve stem on assembly on the second TPMS. Fit the TPMS adapter bracket to the second sensor as shown and re-assemble the valve stem. See image below for reference.



17. Install the dual TPMS assembly to the wheel as shown. Once tightened to the wheel, apply pressure to the adapter bracket so the second TPMS is as close to the wheel as possible.
  - a. Repeat process for the second rear wheel.



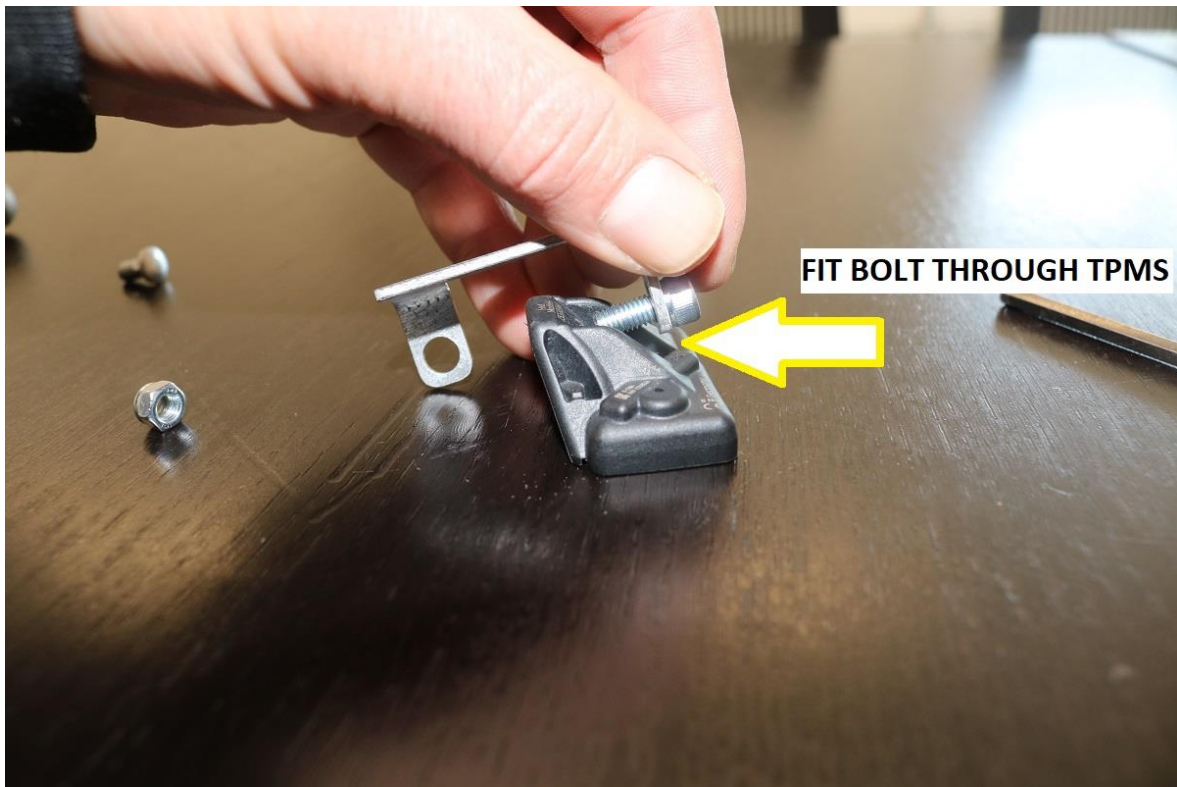
18. For **NEW** style TPMS adapter installation, remove the valve stem assembly on one TPMS. To do so, follow steps below.
- Remove the threaded nut which attached it to the wheel (should be removed already from dismounting)
  - Unthread the dome shaped spacer.
  - Remove the valve stem from the sensor assembly itself.



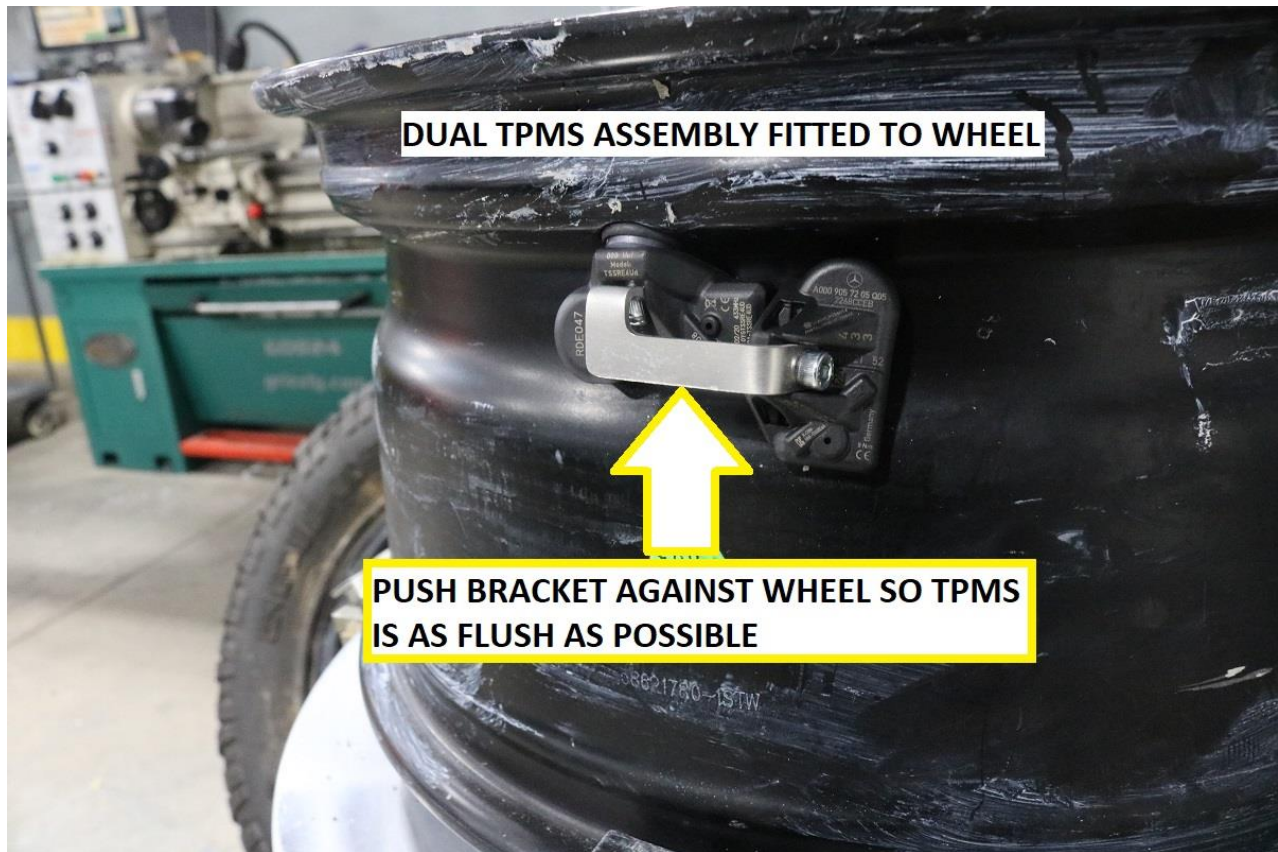
19. Note the TPMS bracket for the new style sensor is the one with the smaller holes.

20. Use the included M5-0.8 x 12mm long socket head screw through the long side of the bracket as shown.

- a. Fit the bolt through the TPMS and secure it with the included M5-0.8 nylock nut as pictured below.



21. Repeat the process of removing the valve stem on assembly on the second TPMS. Fit the TPMS adapter bracket to the second sensor as shown and re-assemble the valve stem assembly using the new included M5-0.8 x 12mm long socket cap screw included. See image below for reference.



22. Install the dual TPMS assembly to the wheel as shown. Once tightened to the wheel, apply pressure to the adapter bracket so the second TPMS is as close to the wheel as possible.
  - a. Repeat process for the second rear wheel.

Installation is Complete

### RELEASE OF LIABILITY

I, the customer, do hereby release and forever discharge Van Compass LLC, their agents, employees, successors and assigns, and their respective heirs, personal representatives, affiliates, successors and assigns, and any and all persons, firms or corporations liable or who might be claimed to be liable, whether or not herein named, from any and all claims, demands, damages, actions, causes of action or suits of any kind or nature whatsoever, whether known or unknown, fixed or contingent, which I now have or may hereafter have or claim to have, as a result of or in any way relating to the following: Parts sold & installed by Van Compass LLC or parts sold & installed by end-user; any parts sold online, any parts sold online or installed by a re-seller, any parts installed by an installation shop.

It is understood and agreed that this payment is made and received in full and complete settlement and satisfaction of the aforesaid actions, causes of action, claims and demands; that this Release contains the entire agreement between the parties; and that the terms of this Agreement are contractual and not merely a recital. Furthermore, this Release shall be binding upon the undersigned, and his respective heirs, executors,

administrators, personal representatives, successors and assigns. This Release shall be subject to and governed by the laws of the State of Idaho.

#### PRODUCT SAFETY WARNING:

Van Compass LLC strongly recommends the installation of products be done by a certified mechanic. If this does not occur, be certain the person(s) installing the product read, understand and follow all instructions and warnings pertaining to the application before installation. Do not add, alter, or fabricate any factory or aftermarket parts to increase vehicle height over the intended height of the Van Compass LLC product purchased. Mixing component brands is not recommended.

Installation of suspension lift kits or any other lifting kits or devices will raise the center of gravity. For this reason, Van Compass LLC urges that extreme caution be used when encountering driving conditions which may cause vehicle imbalance. Furthermore, the driver's field of vision and judgment will not be as good due to the height of the vehicle. Due to the installation of larger tires, the speedometer will read slower than the actual speed being traveled and more distance will be required to stop the vehicle. It is the owner's responsibility to caution and warn any potential driver of the vehicle about these driving and handling conditions. Van Compass LLC will not be held liable or responsible for damages or personal injuries resulting from the use of lifting devices and or related products. The tires and rims should be changed to sufficiently increase the vehicle's total overall width and stability to help accommodate lifting devices.

Van Compass LLC aftermarket suspension products and accessories modify a vehicle for uses which exceed conditions anticipated by the vehicle manufacturer. The uses include the high performance demands required during off-road. These conditions vary in the degree of extremity and cannot be controlled by the vehicle or product manufacturer. If the components within the suspension system or accessories become worn due to frequent and/or extreme use, the safety and reliability of the vehicle is at risk. The maintenance of aftermarket equipment to ensure the vehicle occupants safety is entirely your responsibility. Do not purchase Van Compass LLC products unless you are willing to accept this responsibility. Do not install any Van Compass LLC suspension products or accessories unless you feel competent at installing the product without causing present or future injury to yourself or other vehicle occupants; seek an authorized installation center.

Most states have some type of law limiting vehicle height. The amount of lift allowed, and how the lift can be achieved, varies greatly. Several states offer exemptions for farm and commercial registered vehicles. It is the vehicle owner's responsibility to check state and local laws to ensure that their vehicle will be in compliance. Van Compass LLC reserves the right to make changes in design, materials and specifications as deemed necessary without prior notice and without assuming obligation to modify any product previously manufactured. Obligation or liabilities will not be assumed with respect to similar products previously advertised.

This Release of Liability and Product Safety Warning has been read and fully understood by the undersigned and has been explained to me.