

MOMENTUM *GT*

advanced FLOW engineering

Cold Air Intake System

Instruction Manual P/N: 51-76103 / 54-76103 / 75-76103

Make: Infiniti

Model: QX56

Year: 2011-2013

Engine: V8-5.6L

Make: Infiniti

Model: QX80

Year: 2014-2024

Engine: V8-5.6L

Make: Nissan

Model: Armada

Year: 2017-2024

Engine: V8-5.6L

Make: Nissan

Model: Patrol (Y62)*

Year: 2010-2024

Engine: V8-5.6L

* Non-US Model



- Please read the entire instruction manual before proceeding.
- Ensure all components listed are present.
- If you are missing any of the components, call customer support at 951-493-7185.
- Ensure you have all necessary tools before proceeding.
- Do not attempt to work on your vehicle when the engine is hot.
- Retain factory parts for future use.

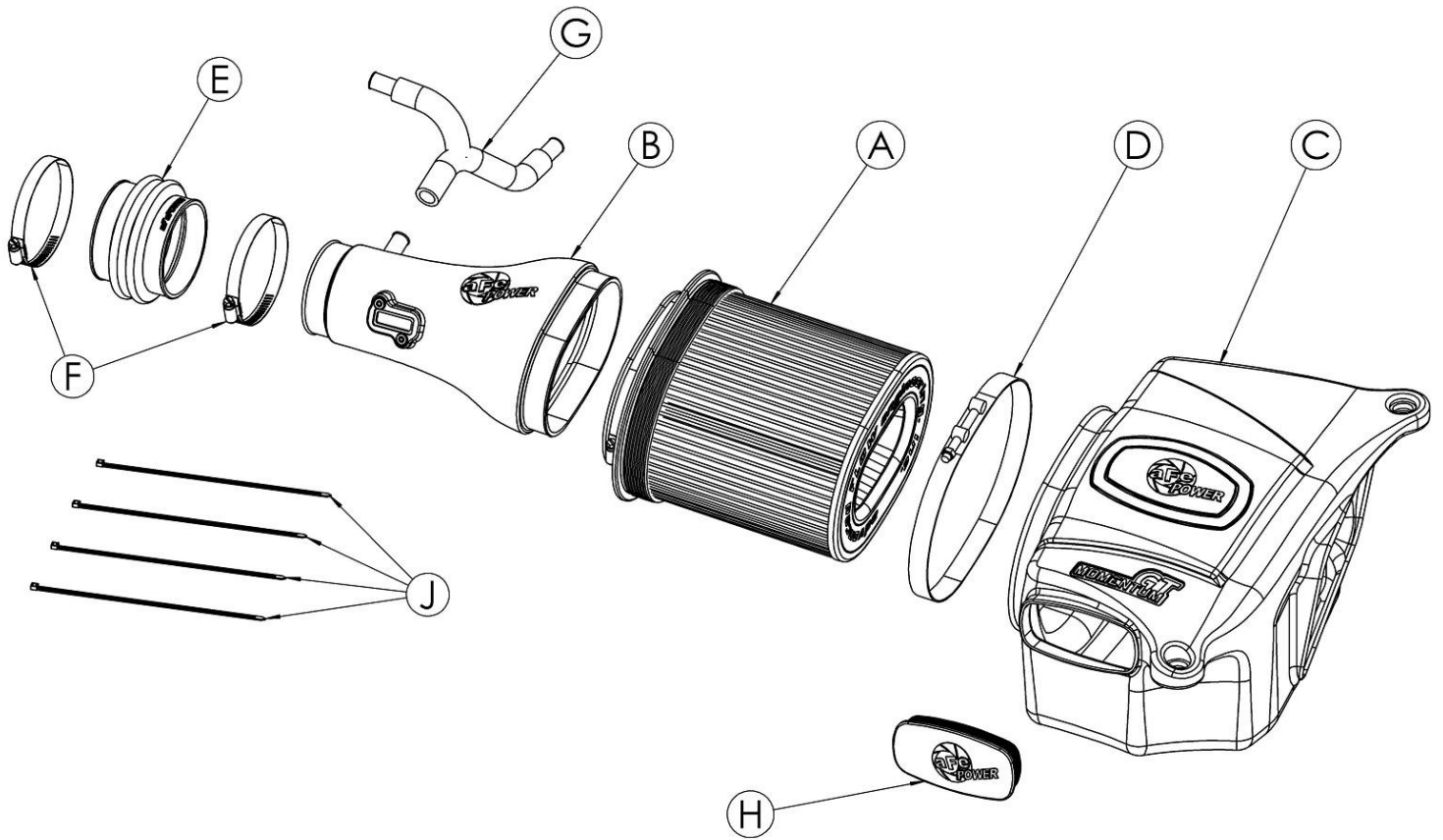
Label	Qty.	Description	Part Number
A	1	Air Filter (Pro 5R) For 54-76103	24-91061
A	1	Air Filter (Pro DRY S) For 51-76103	21-91061
A	1	Air Filter (Pro Guard 7) For 75-76103	72-91061
B	1	Tube	05-76103B1
C	1	Housing	05-76103B2
D	1	Clamp, T-Bolt (8-5/16"-8-5/8") SS	03-50267
E	1	Coupler, Bellow: 3-1/2"ID x 3"L	05-01389
F	2	Clamp, 056 (3-1/16" - 4 ")	03-50009
G	1	Hose, Adapter CCV (Silicone)	05-01346
H	1	Plug, Housing	05-01202
J	4	Ties, Nylon Cable, 12", 50 lb., Black	05-60167

Installation will require the following tools:

7mm Nut Driver, 8mm Nut driver, 10mm Nut Driver, 11mm Deep Socket, 1/4" Ratchet, 10mm deep Socket, Flathead Screwdriver, Phillips Screwdriver, Pliers.

Recommended: Acetone.

Warranty Information available at: <https://afepower.com/contact#warranty>



**Figure A****Refer to Figure A for Steps 1-2**

Step 1: Using a 10mm nut driver, remove the two bolts ① securing the engine cover.

Step 2: Lift and pull the engine cover toward you to remove.

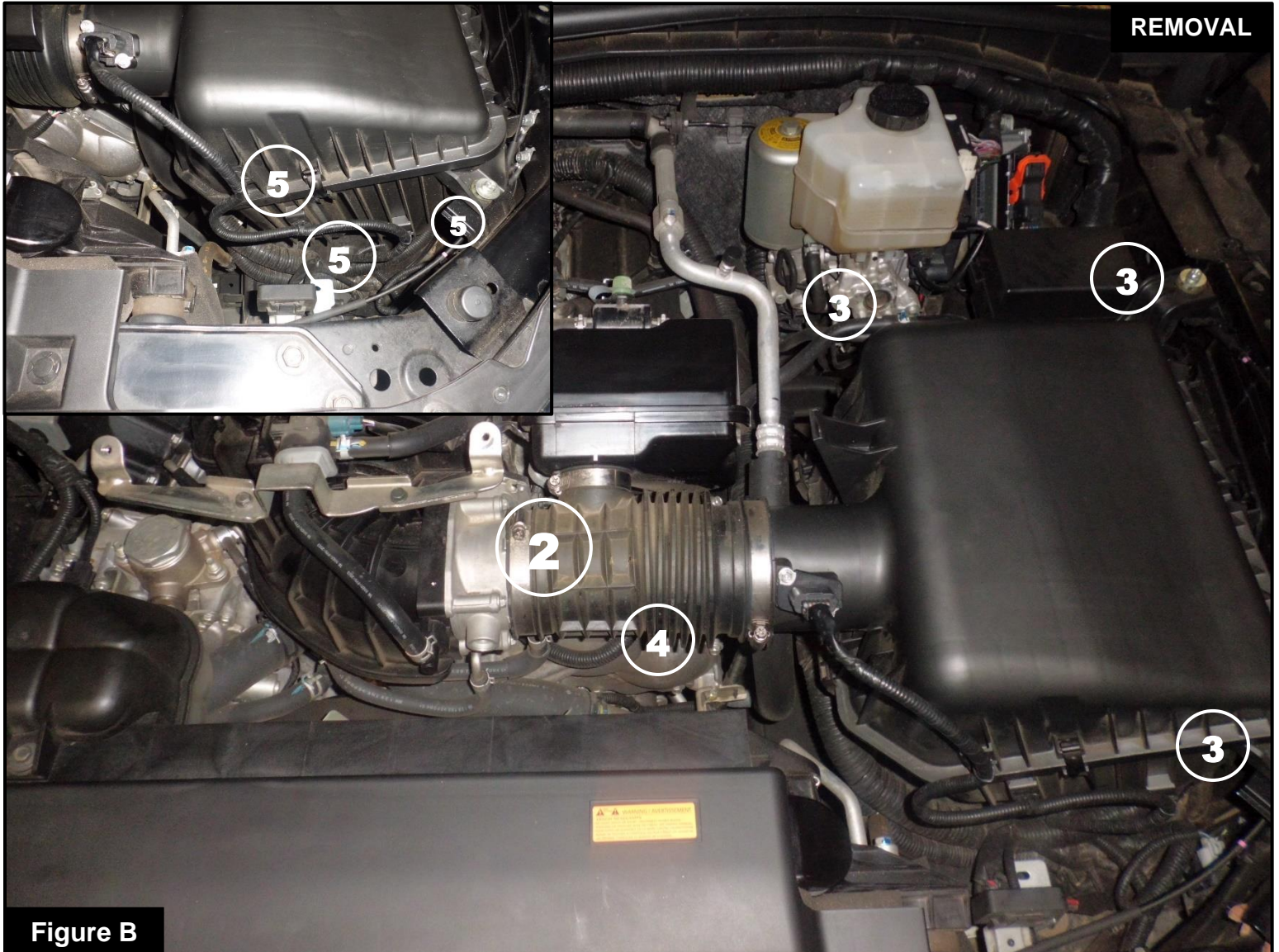


Figure B

Refer to Figure B for Steps 3-7

Step 3: Using an 8mm nut driver, loosen the hose clamp②at the throttle body.

Step 4: Using a 10mm nut driver, remove the three bolts③securing the factory housing in place.

Step 5: Unclip the Mass Air Flow (MAF) sensor④from tube

Step 6: Using a 7mm nut driver or Philips head screwdriver, remove both screws and MAF sensor. You will reuse both screws

Step 7: Carefully detach all three clips⑤securing the MAF sensor wiring harness to the factory housing.



Figure C

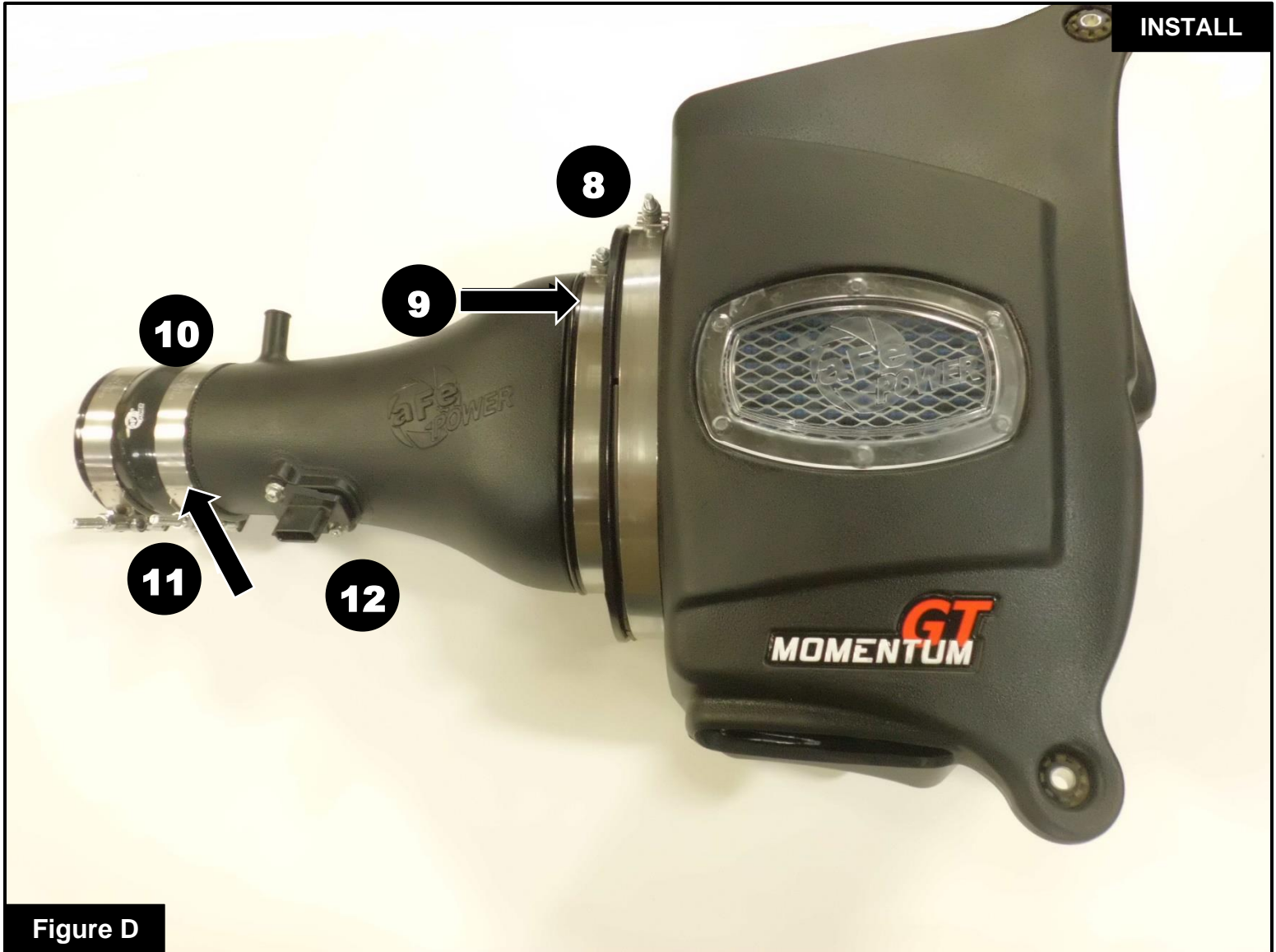
Refer to Figure C for Steps 8-11

Step 8: Compress the metal spring clamps (6) on both crank case vent (CCV) hoses and slide down hose.

Step 9: Disconnect both CCV hoses from resonance chamber and position out of the way

Step 10: Unclip and remove both plastic clips (7) connecting the rubber evap hose to the resonance chamber.

Step 11: Remove the entire factory intake assembly at this time.

**Figure D****Refer to Figure D for Steps 12-17 (Actual Clamps may vary from picture)**

Step 12: Slide large t-bolt clamp (8) over aFe POWER housing flange as shown.

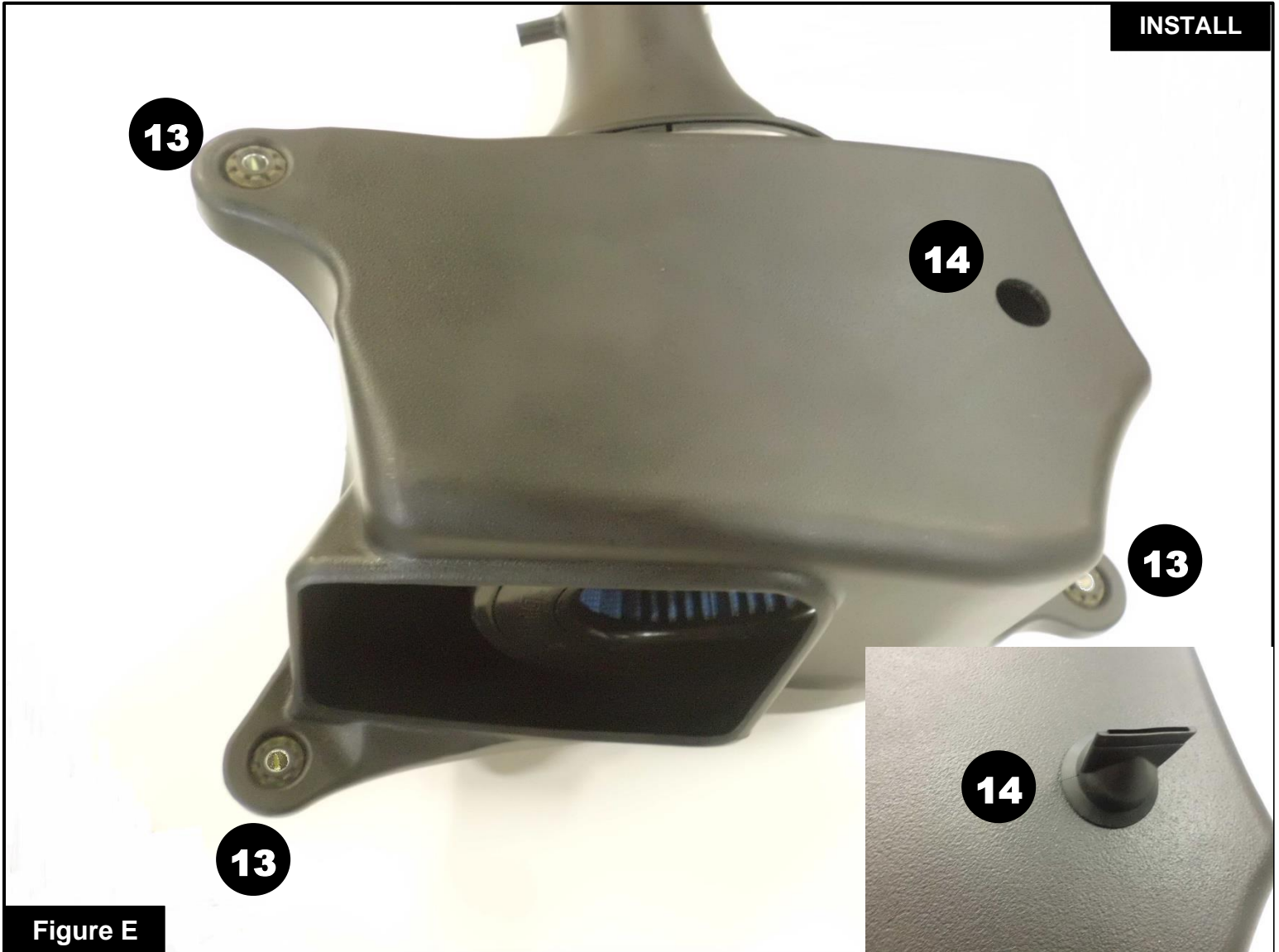
Step 13: Clean the inside of the rotomold housing flange and both mating surfaces of the filter flange (acetone recommended).

Step 14: Insert the filter into housing then the tube into the filter (9) and tighten both clamps at this time.

Step 15: Assemble the two worm clamps over the silicone bellow coupler as shown (10).

Step 16: Tighten only the clamp over the tube side at this time (11).

Step 17: Insert MAF sensor (12) and secure using the two screws you removed in step 6.

**Figure E****Refer to Figure E for Steps 18-19**

Step 18: Remove the 3 steel sleeves and rubber grommets (13) from the factory housing and install on the aFe POWER housing as shown.

Step 19: If equipped with rubber duck-billed drain plug (14) install here, otherwise leave open.



Figure F

Refer to Figure F for Steps 20-21 (Actual Clamps may vary from picture)

Step 20: Take the full intake assembly and place silicone coupler over throttle body as shown.

Step 21: From the driver side of the engine, push and compress ⑮ the coupler while lowering the housing side down into position ⑯, aligning the three mounting locations.

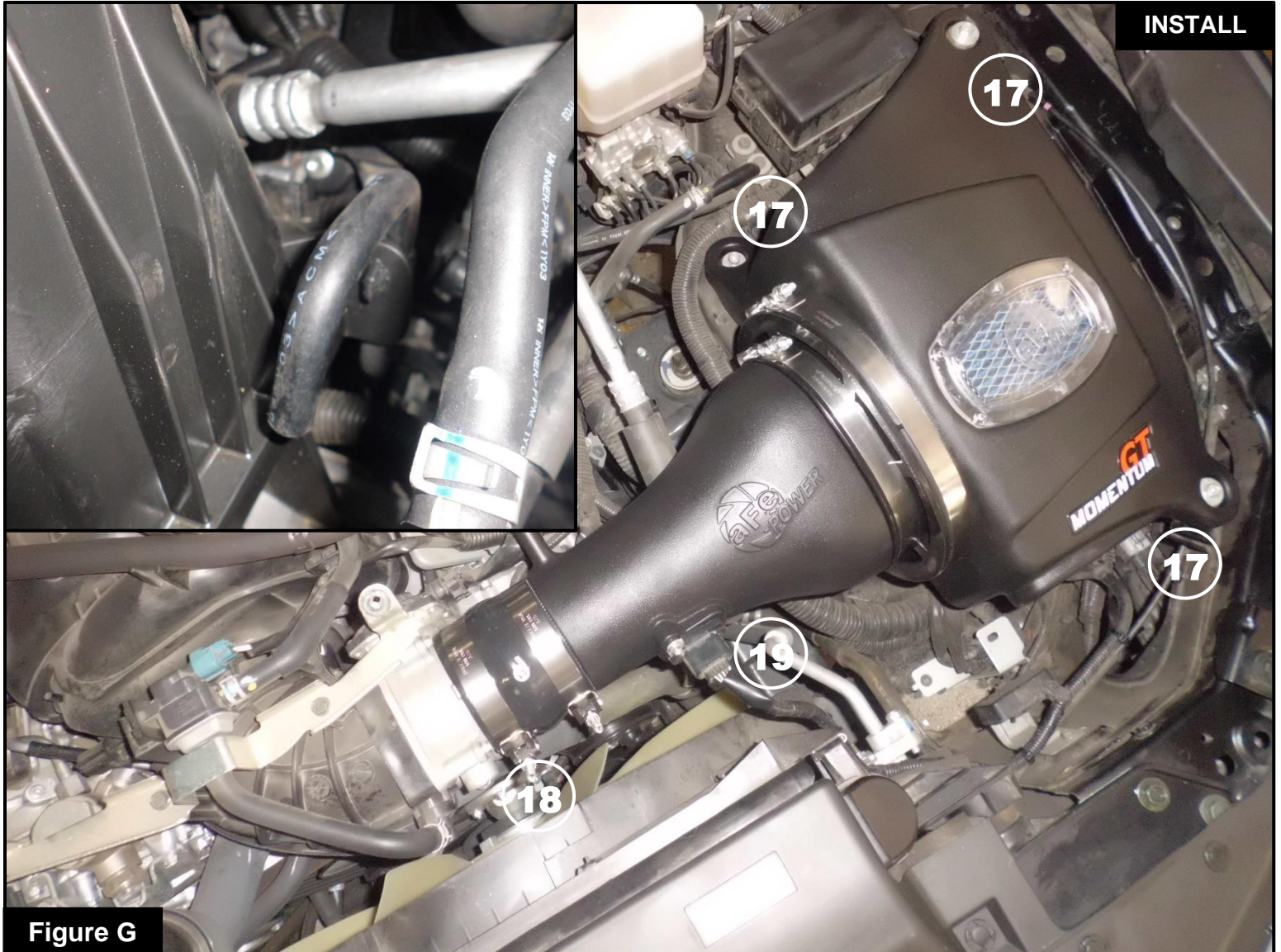


Figure G

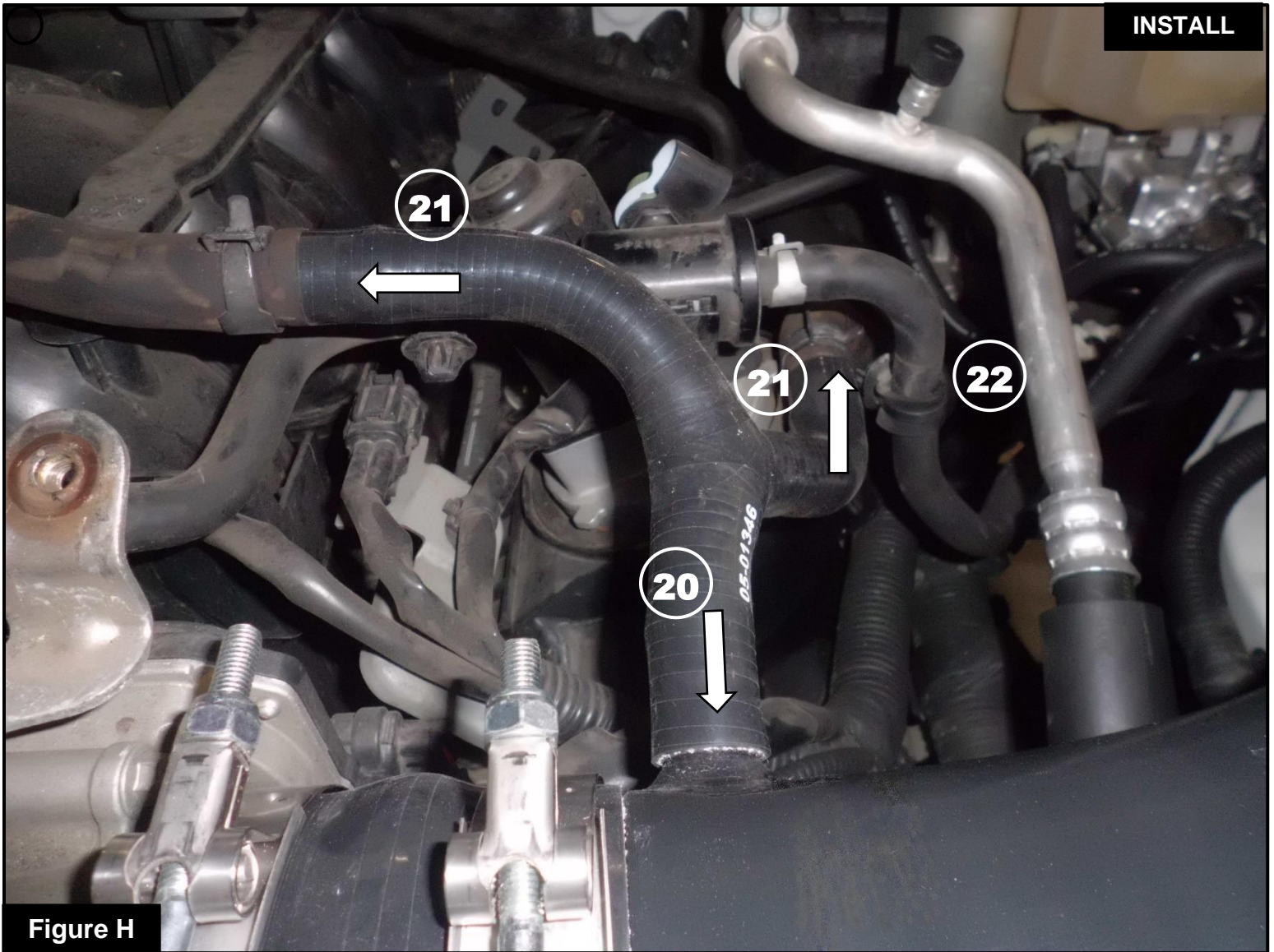
Refer to Figure G for Steps 22-25 (Actual Clamps may vary from picture)

Step 22: Install and tighten the three bolts (17) you previously removed in step 4, securing the aFe POWER housing in place.

Step 23: At this time, tighten the remaining clamp (18) over the throttle body

Step 24: If equipped with the vent hose shown in the inset picture, clip into the slot on the side of the aFe POWER housing.

Step 25: Connect the MAF sensor harness to the aFe POWER tube at this time (19).

**Figure H****Refer to Figure H for Steps 26-29**

Step 26: Install the provided silicone adaptor hose: place the end with no metal fitting (20) over the nipple on the aFe POWER tube.

Step 27: Install the remaining two ends of the adaptor (21) with the stainless fittings into the CCV hoses.

Step 28: Compress and slide the two spring clips over the silicone adaptor ends as shown.

Step 29: Use a provided cable tie to secure (22) the evap hose to the silicone adaptor coupling.



Figure I

Refer to Figure I for Steps 30-32

Step 30: Using the provided cable ties, secure the MAF sensor wiring harness (23) as shown in the inset picture, in order to be neatly tucked out of the way.

Step 31: Make sure all clamps and connections are secured.

Step 32: Reinstall the engine cover at this time with the bolts you removed in Step 1.

NOTE: Retighten all connections after approximately 100-200 miles. Place enclosed CARB EO sticker on or near the device on a smooth, clean surface. EO identification label is required to pass the smog inspection



PAGE LEFT BLANK INTENTIONALLY



PAGE LEFT BLANK INTENTIONALLY



PAGE LEFT BLANK INTENTIONALLY



advanced FLOW engineering, Inc.

Corona, CA 92879

<https://afepower.com/contact>