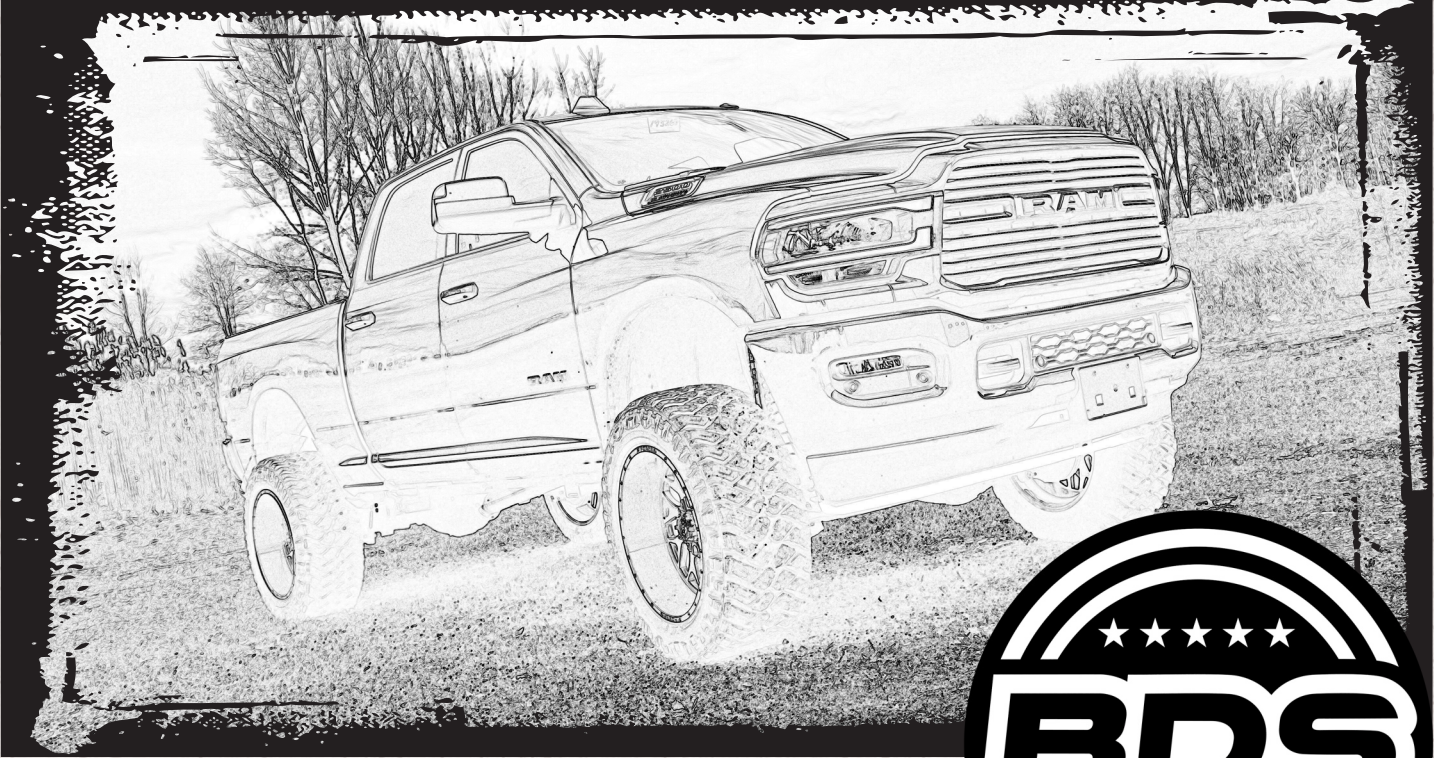


# INSTALLATION GUIDE



Part#: 122627



**HARDCORE LIMITED LIFETIME WARRANTY**

## 10 Bolt Indexing Ring

**Dodge Ram 2500 Diesel 4WD | 2025-2026**

Rev.052226

491 W. Garfield Ave., Coldwater, MI 49036 • Phone: 517-279-2135

Web: [www.bds-suspension.com](http://www.bds-suspension.com) • E-mail: [tech-bds@ridefox.com](mailto:tech-bds@ridefox.com)

# Read And Understand All Instructions And Warnings Prior To Installation Of System And Operation Of Vehicle.



## THANK YOU

Your truck is about to be fitted with the best suspension system on the market today. That means you will be driving the baddest looking truck in the neighborhood, and you'll have the warranty to ensure that it stays that way for years to come.

Thank you for choosing BDS Suspension!

### BEFORE YOU START

BDS Suspension Co. recommends this system be installed by a professional technician. In addition to these instructions, professional knowledge of disassembly/ reassembly procedures and post installation checks must be known.

### FOR YOUR SAFETY

Certain BDS Suspension products are intended to improve off-road performance. Modifying your vehicle for off-road use may result in the vehicle handling differently than a factory equipped vehicle. Extreme care must be used to prevent loss of control or vehicle rollover. Failure to drive your modified vehicle safely may result in serious injury or death. BDS Suspension Co. does not recommend the combined use of suspension lifts, body lifts, or other lifting devices. You should never operate your modified vehicle under the influence of alcohol or drugs. Always drive your modified vehicle at reduced speeds to ensure your ability to control your vehicle under all driving conditions. Always wear your seat belt.

### BEFORE INSTALLATION

- Special literature required: OE Service Manual for model/year of vehicle. Refer to manual for proper disassembly/reassembly procedures of OE and related components.
- Adhere to recommendations when replacement fasteners, retainers and keepers are called out in the OE manual.
- Larger rim and tire combinations may increase leverage on suspension, steering, and related components. When selecting combinations larger than OE, consider the additional stress you could be inducing on the OE and related components.
- Post suspension system vehicles may experience drive line vibrations. Angles may require tuning, slider on shaft may require replacement, shafts may need to be lengthened or trued, and U-joints may need to be replaced.
- Secure and properly block vehicle prior to installation of BDS Suspension components. Always wear safety glasses when using power tools.
- If installation is to be performed without a hoist, BDS Suspension Co. recommends rear alterations first.
- Due to payload options and initial ride height variances, the amount of lift is a base figure. Final ride height dimensions may vary in accordance to original vehicle attitude. Always measure the attitude prior to beginning installation.



Visit [560plus.com](http://560plus.com) for more information.

### BEFORE YOU DRIVE

Check all fasteners for proper torque. Check to ensure for adequate clearance between all rotating, mobile, fixed, and heated members. Verify clearance between exhaust and brake lines, fuel lines, fuel tank, floor boards and wiring harness. Check steering gear for clearance. Test and inspect brake system.

Perform steering sweep to ensure front brake hoses have adequate slack and do not contact any rotating, mobile or heated members. Inspect rear brake hoses at full extension for adequate slack. Failure to perform hose check/ replacement may result in component failure. Longer replacement hoses, if needed can be purchased from a local parts supplier.

Perform head light check and adjustment.

Re-torque all fasteners after 500 miles. Always inspect fasteners and components during routine servicing.

# CONTENTS OF YOUR KIT

<b>Box Kit 122627</b>		
Part #	Qty	Description
B1705	1	Bag Kit - 2025 Ram Index
	8	8-3/8 x.18 Cable tie Tree
	2	11.5in Nylon Cable Tie
	1	Thread Locker
BP1105	1	Bolt Pack
	10	10mm-1.50 x 30mm FHSCS
	10	3/8"-16 x 1-3/4" Bolt
	10	3/8"-16 NyLock Nut
	10	3/8" SAE Washer
944	1	Bolt Pack
	6	1/2"-13 x 2" Bolt
	12	1/2" SAE Washer
	6	1/2"-13 Prevailing Torque Nut
496	1	Bolt Pack
	1	Hose Clip
	1	6mm-1.00 Prevailing Torque Nut
	1	1/4" SAE Washer
B1709	1	Bag Kit - Seal Adapter Assembly
	1	65x80x10 AS Viton Seal
	1	Multi Purpose Grease Packet
	1	O-Ring, 3/32
05690	1	2025 Ram 2500/3500 X-member - BDS
05692	1	2025 Ram 2500/3500 Index Ring - 10 Bolt
02489	1	13 Dodge Ram Trans Mount
02490	6	13 Dodge Ram Trans Mount Spacer

# PRE INSTALLATION

---

## IMPORTANT

It is required that ride height measurements be taken before and after installation. Measure from the **WHEEL AXLE CENTER** up to the **FENDER LIP** of the wheel opening. Do this for all 4 wheels. Record measurements below.\*\*

### BEFORE

*Left Front* \_\_\_\_\_ *Right Front* \_\_\_\_\_

*Left Rear* \_\_\_\_\_ *Right Rear* \_\_\_\_\_

### AFTER

*Left Front* \_\_\_\_\_ *Right Front* \_\_\_\_\_

*Left Rear* \_\_\_\_\_ *Right Rear* \_\_\_\_\_



*\*\*These ride heights will be required if you have any ride height concerns after installation. Please be prepared to provide these to Technical Support.*

# TECH TIPS

## TROUBLESHOOTING INFORMATION FOR YOUR VEHICLE

1. BDS Suspension recommends upgrading the transmission output shaft on vehicles with larger tires that will see heavy loads from other upgrades such as gearing, or performance tunes especially in high payload, heavy towing, or competition pulling applications.
2. Index ring alone may not eliminate all front driveline vibrations, ball joint caster cams at the axle may need to be adjusted to eliminated 4wd vibrations in rare circumstances.
3. DO NOT USE FILL PORT FOR FLUID LEVEL ON AN INDEXED TRANSFER CASE. THE FILL PORT WILL BE LOWER THAN OE FILL LEVEL HEIGHT: If any maintenance requiring fluid change or refill has or is being done, before reinstalling transfer case check fluid levels on bench and fill transfer case with manufacturer recommended volume of fluid.

## INSTALLATION INSTRUCTIONS

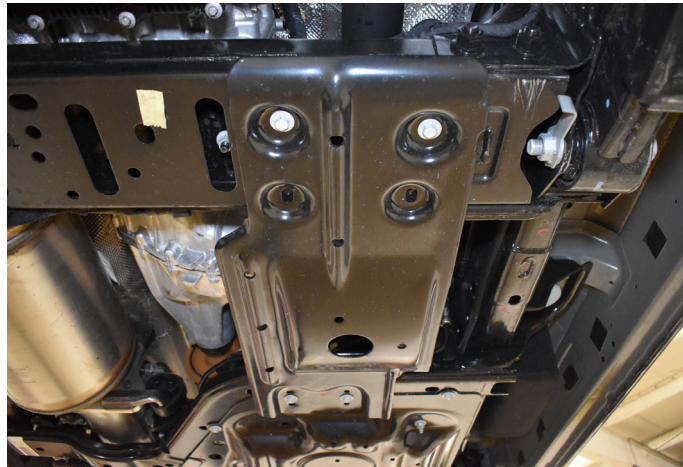
### SPECIAL TOOLS

Transmission Jack or equivalent  
Bearing Race and Seal Driver  
Manufacturer Torque Specifications

### DISSASSEMBLY

1. Remove the skid plate bolts. 13mm socket. *(Fig.1)*

FIGURE 1



2. Mark flange orientation. *(Fig. 2A)* Remove the 4 half shaft bolts, use 15 mm socket. *(Fig. 2B)*

FIGURE 2A

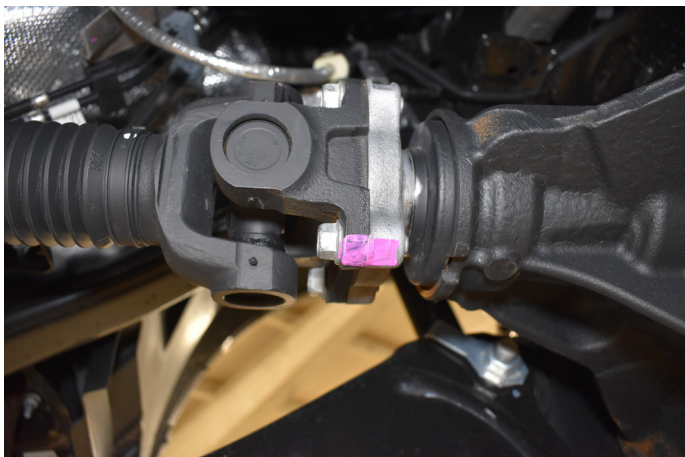
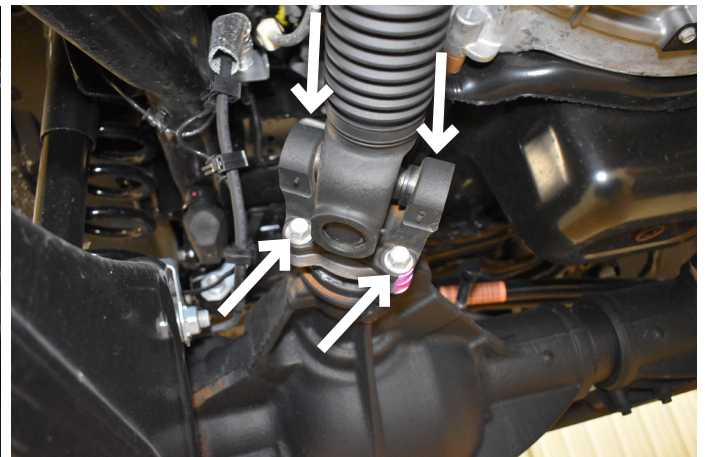
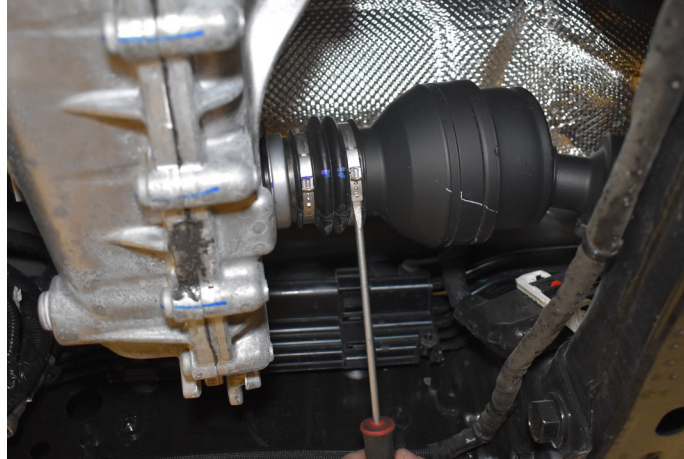


FIGURE 2B



3. Disconnect the 2 half shaft boot clamps using a flathead screw driver. Discard. *(Fig. 3)*

**FIGURE 3**

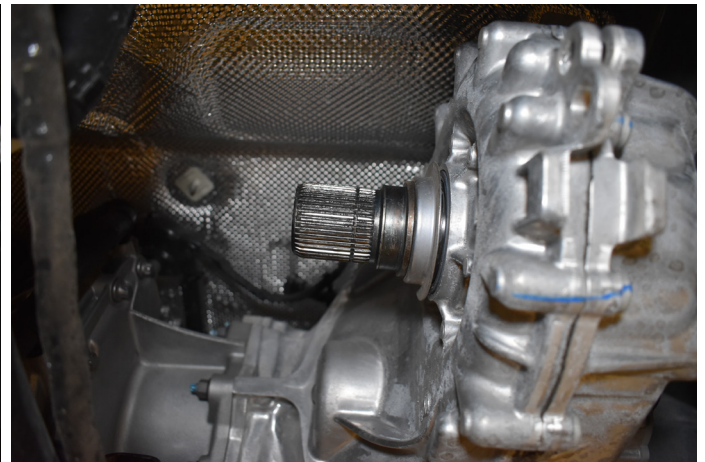


4. Pull the boot back to access the snap ring. Use snap ring pliers to open up snap ring, pull drive shaft off of the splines. *(Fig. 4A, 4B)*

**FIGURE 4A**



**FIGURE 4B**



5. Remove rear drive shaft. by removing the 4 bolts. Use a 15mm socket. *(Fig. 5)*

**FIGURE 5**



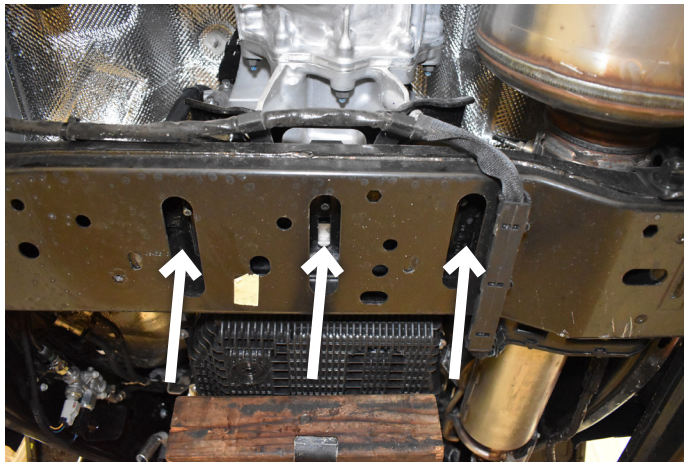
- Support your transmission with a jack using a large block to distribute the weight. Caution as the pan is plastic. *(Fig. 6)*

**FIGURE 6**



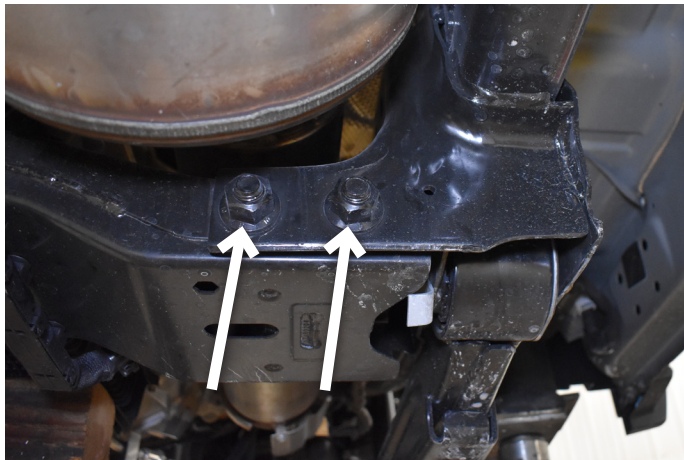
- Remove the 3 bolts x-member to transmission mount bolts. Use a 15mm socket. *(Fig. 7)*

**FIGURE 7**



- Carefully lift transmission with jack enough to take pressure of the x-member.
- Loosen and remove the 4 x-member nuts, leave the bolts in place. The bolts will be remove in a later step. Use a 24mm socket. *(Fig. 8)*

**FIGURE 8**



10. Disconnect the various wiring harness clips attaching the wiring to the x-member. Slacked harness should hang down like images (Fig. 9A - 9B)

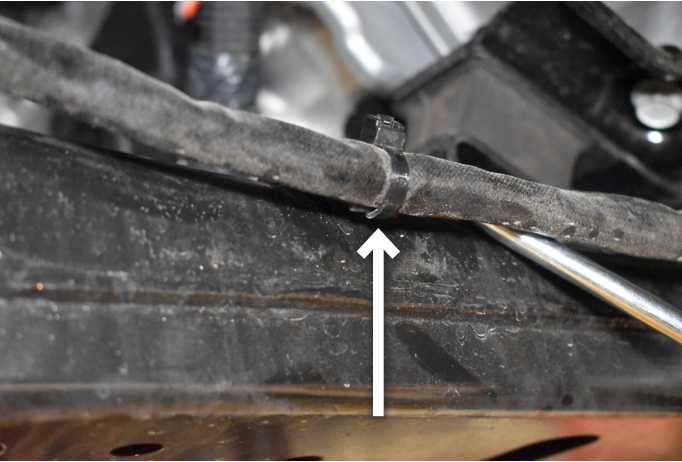
**FIGURE 9A**



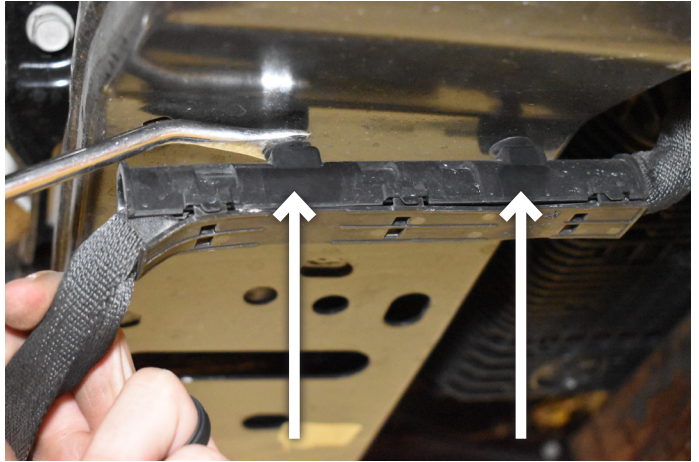
**FIGURE 9B**



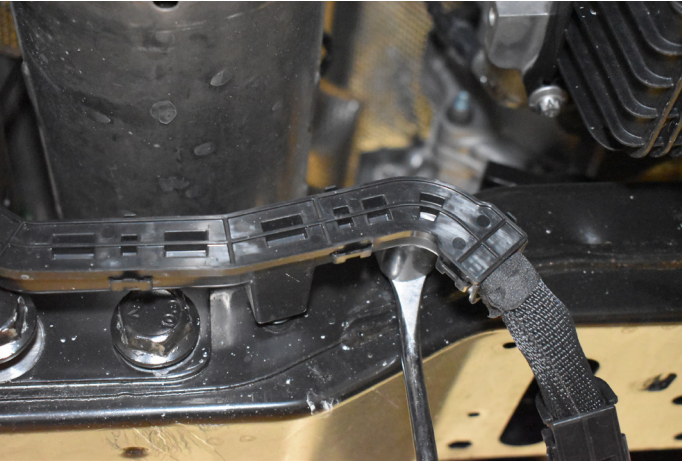
**FIGURE 9C**



**FIGURE 9D**



**FIGURE 9E**

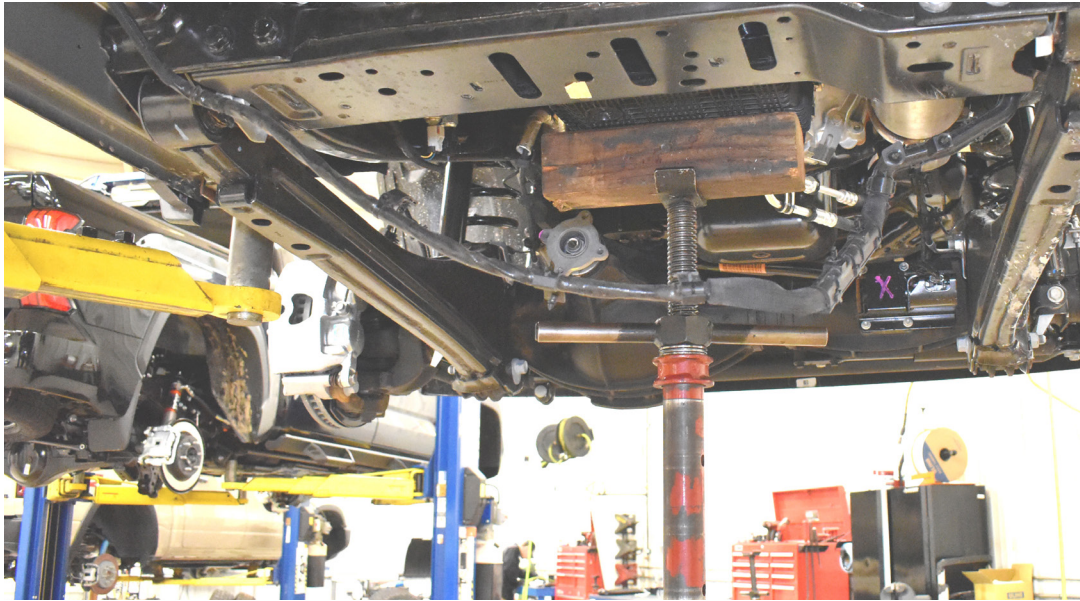


**FIGURE 9F**



11. The wiring harness needs to be completely loosened from the driver side to the passenger side frame. (Fig. 10)

**FIGURE 10**



12. Disconnect transfer case wire harness from breather tube. (Fig. 11A, 11B)

**FIGURE 11A**



**FIGURE 11B**

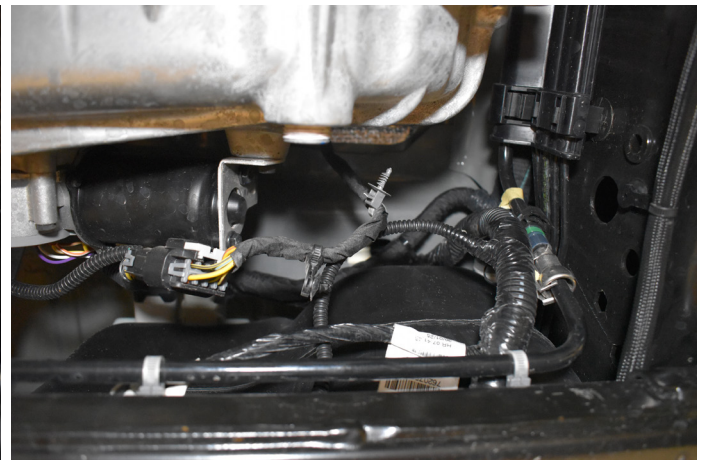


13. Disconnect wiring harness attached to the t-case. Wrap harness forward of the t-case for clearance. (Fig. 12A, 12B, 12C)

**FIGURE 12A**



**FIGURE 12B**

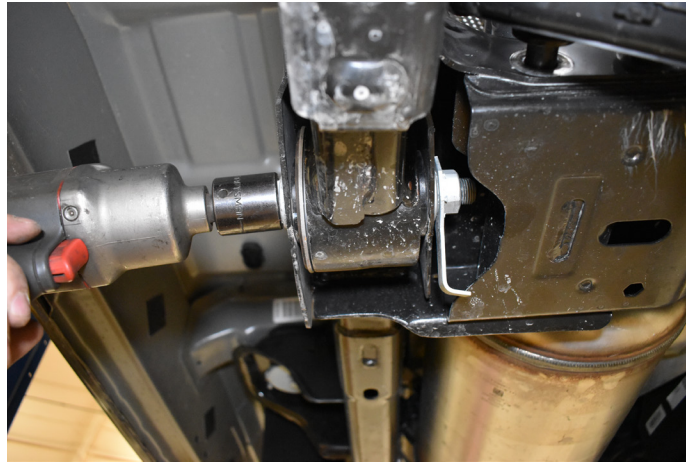


**FIGURE 12C**



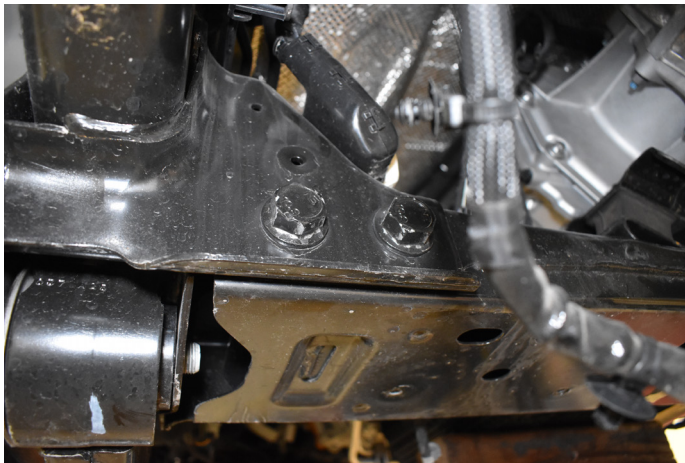
14. Remove the radius arm nut tabs, do not remove the bolts. (Fig. 13)

**FIGURE 13**



15. Remove the x-member bolts. (Fig. 14A, 14B)

**FIGURE 14A**



**FIGURE 14B**



16. Remove x-member (Fig. 15A, 15B)

**FIGURE 15A**



**FIGURE 15B**

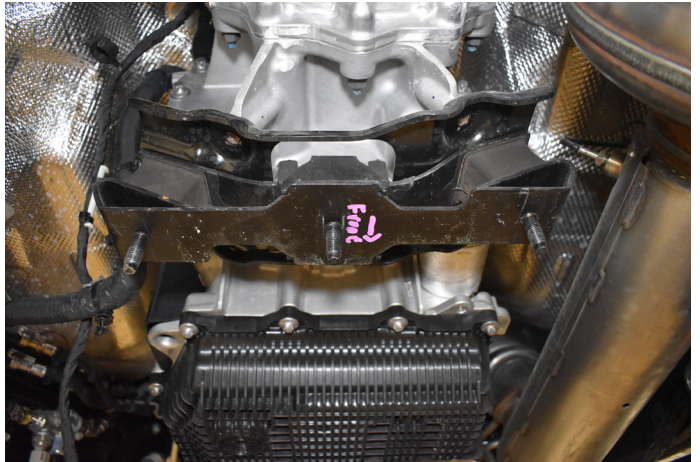


17. Remove the 4 bolts holding the transmission mount on. Mark mount front orientation. Use 15mm socket. (Fig. 16A, 16B)

**FIGURE 16A**



**FIGURE 16B**

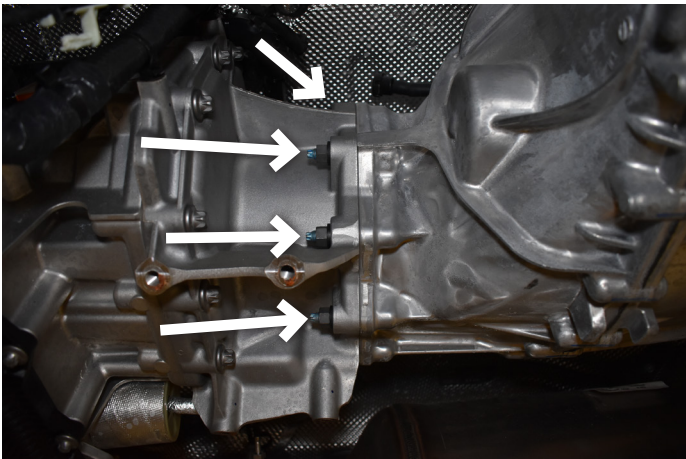


**! If installing a DEF drop please follow manufacturer instructions now to ease removal of the transfer case. !**

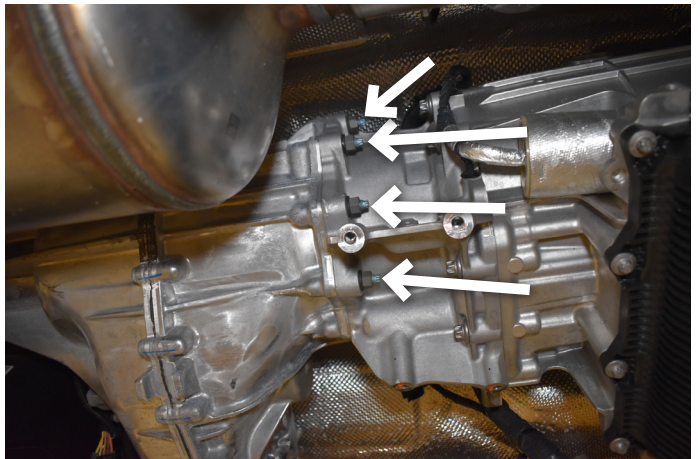
18. Lower transmission and t-case enough to give room to access the t-case nuts.

19. Working from the top down, remove the 10 t-case 9/16" nuts, use a ratcheting wrench. (Fig. 17A, 17B)

**FIGURE 17A**

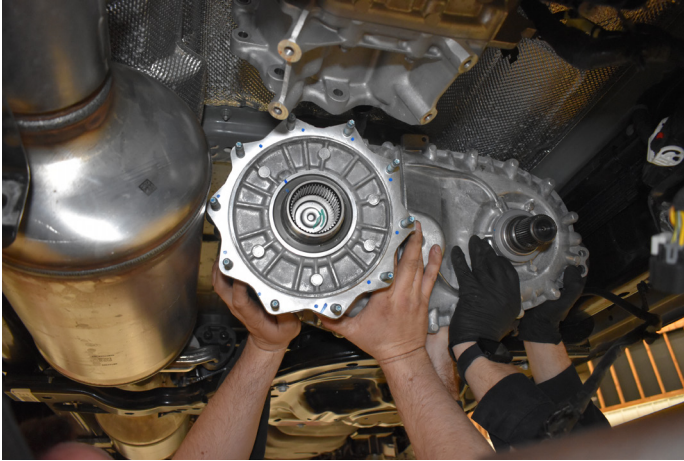


**FIGURE 17B**

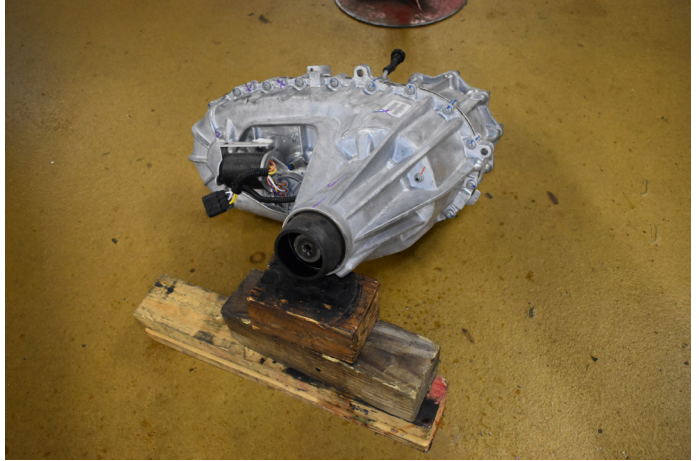


20. With the help of a friend or 2, pull the t-case towards the rear of the vehicle and off the transmission studs. Tip the front side of the t-case down and out of the t-case space. **(Fig. 18A, 18B)** DO NOT TIP THE SPLINE SIDE DOWN AS THE T-CASE WILL LEAK FLUID.

**FIGURE 18A**



**FIGURE 18B**



21. Re-route the transfer case wire harness to the bottom of the cab using provide clip and nut from BP 496. **(Fig. 19)**

**FIGURE 19**



22. Remove the studs from the transfer case by double nutting the studs. **(Fig. 20)**

**FIGURE 20**



Install the 10 bolts into the indexing ring found in BP1105. (Fig. 21A, 21B)

**FIGURE 21A**

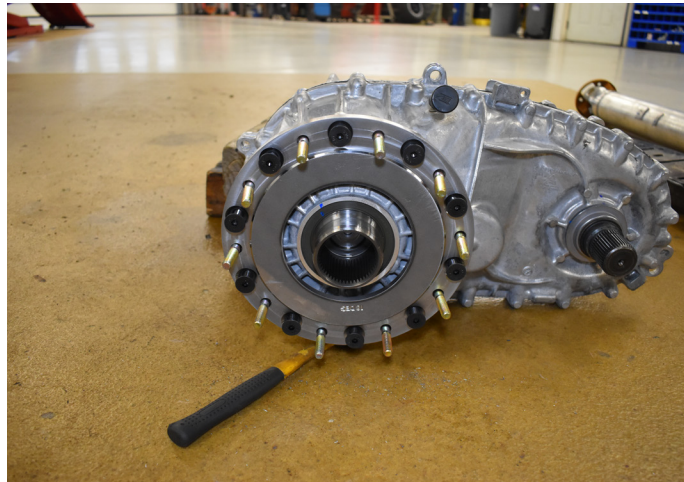


**FIGURE 21B**



23. Install the indexing ring to the differential using the 10 provided flat-head hex bolts (located in BP1105). Apply thread locker to each bolt and torque to 25 ft-lbs. (Fig. 22)

**FIGURE 22**



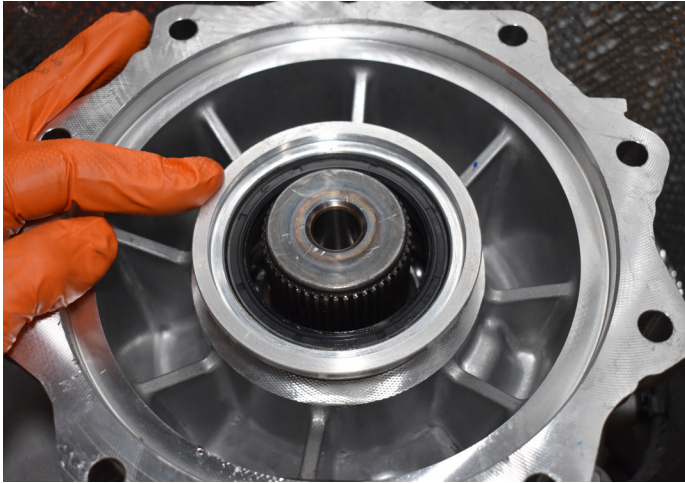
24. Remove the OE seal from the transmission tail housing. Be careful not to scratch or gauge the seal surface. (Fig. 23)

**FIGURE 23**



25. Lubricate the O-ring and seal with ATF fluid. Install the seal adapter assembly into the transmission using the appropriately sized seal driver tool. **Note: only use ATF fluid as lubricant do not use grease on the seal or seal adapter. Seal must be lubricated before installing the T-case.** (Fig. 24A, 24B)

**FIGURE 24A**



**FIGURE 24B**



26. Using the provided cable clips, detach the OE clips and reattach the DEF lines to the fuel skid to draw the DEF lines in and provide clearance for then transfer case. (Fig. 25A, 25B)

**FIGURE 25A**



**FIGURE 25B**



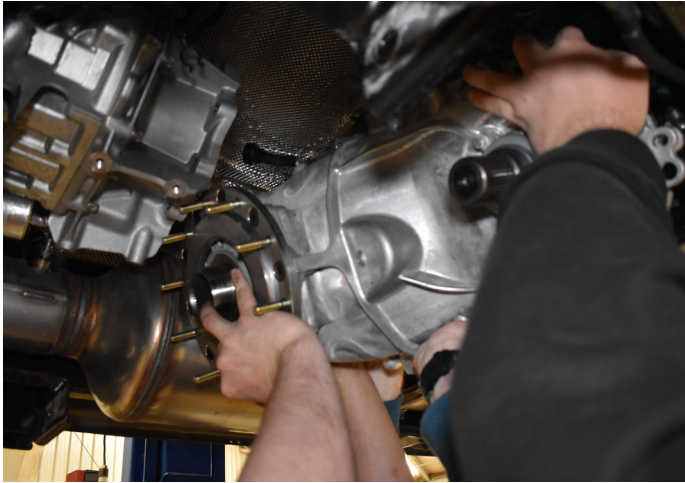
27. Reconnect all the wire harness connectors. (Fig. 26)

**FIGURE 26**

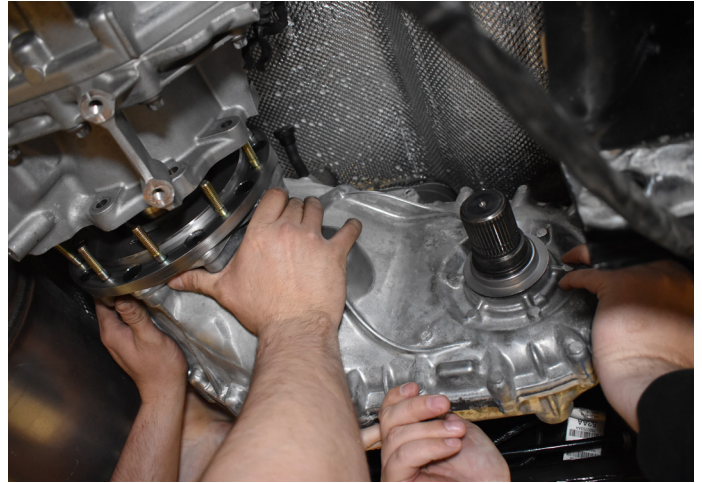


28. With the help of a friend or two, lift the rear end of the transfer case into the space first then lift up the front and align the holes slide into place. Once all the bolts are aligned it may be necessary to spin the output shaft to align the splines. (Fig. 27A, 27B) **Note: having 2 people hold the T-case in place while a 3rd aligns the bolts and splines is highly beneficial.**

**FIGURE 27A**

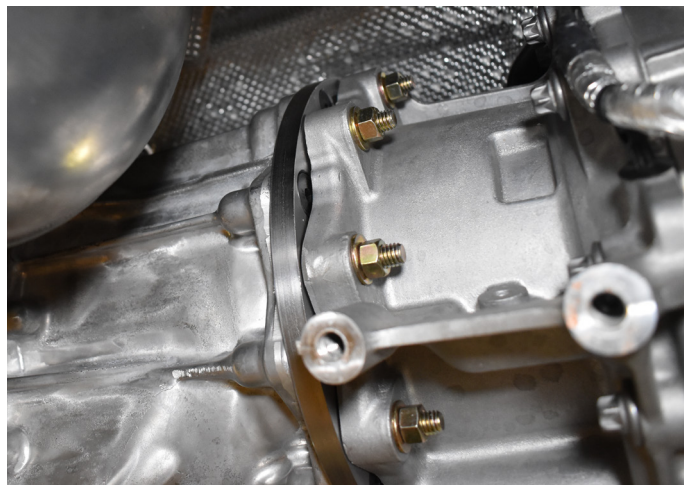


**FIGURE 27B**



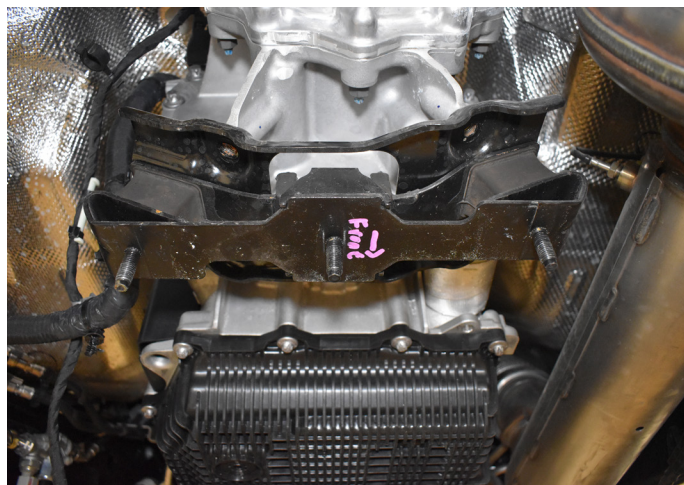
29. Working from the top down Install the ten provided nuts and washers loosely then torque to 35ft-lbs. (Fig. 28)

**FIGURE 28**



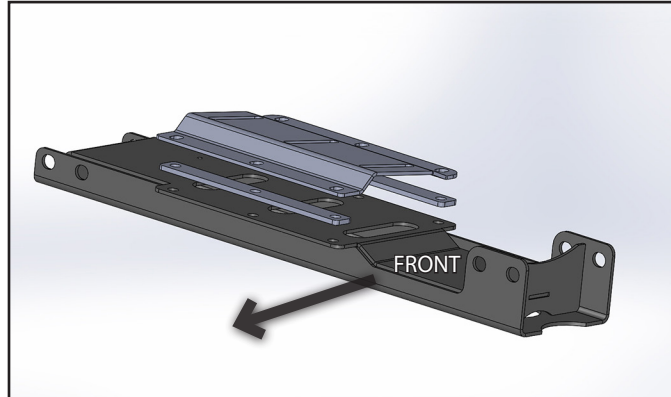
30. Re-install the transmission mount using OE Hardware. Torque to 35 ft-lbs (Fig. 29)

**FIGURE 29**



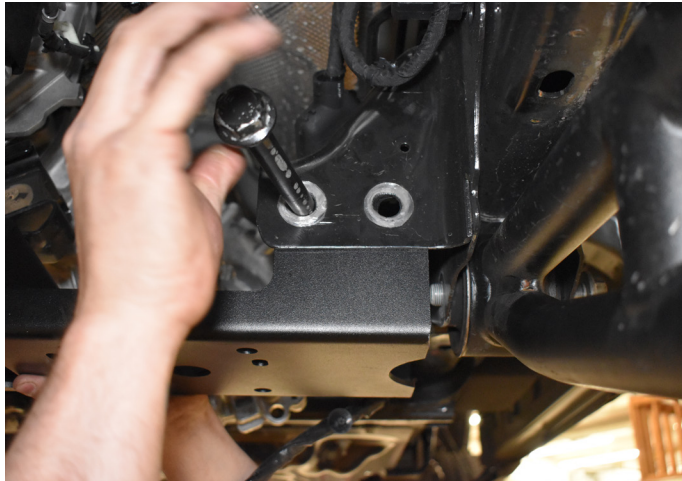
31. Ensure the crossmember wire harness is routed over the crossmember on the passenger side then behind the crossmember over to the driver side frame rail.
32. Loosely install new base with the factory nuts (3 plc), the taller end of the bracket will face towards the front of the vehicle. Use the 1/2" hardware in BP944. (*Fig 30*)

**FIGURE 30**



33. Install the provided cross member using the OE nuts and bolts. Torque to 177 ft-lbs. (*Fig. 31A, B*)

**FIGURE 31A**

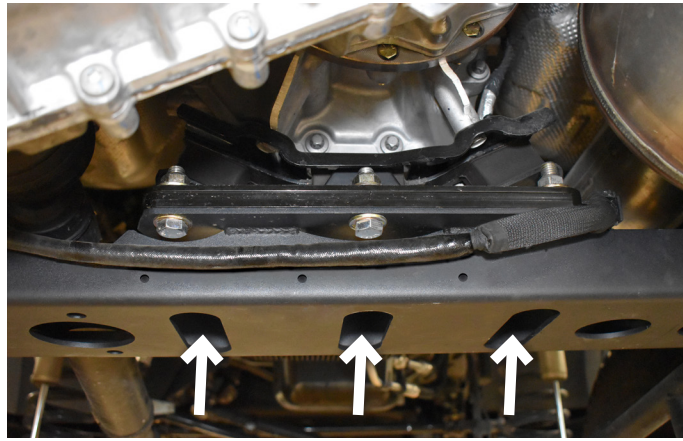


**FIGURE 31B**



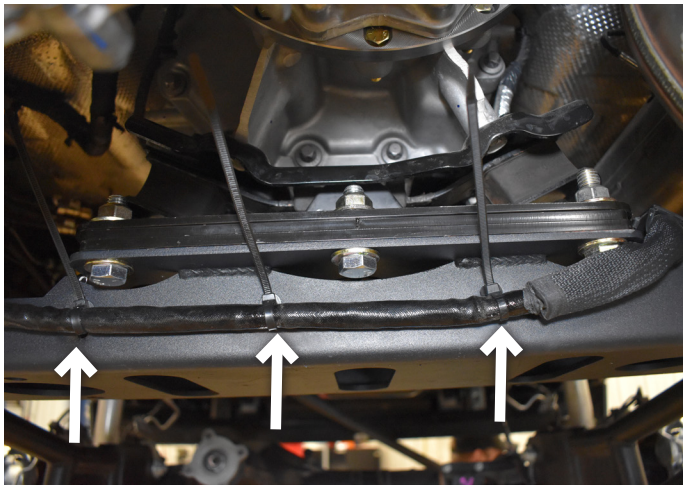
34. Lower the transmission and bolt the transmission to the new crossmember with factory hardware, Torque to 45 ft-lbs. Torque Torque the 1/2" hardware for the crossmember transmission mount and crossmember to 90 ft-lbs. (*Fig. 32*)

**FIGURE 32**



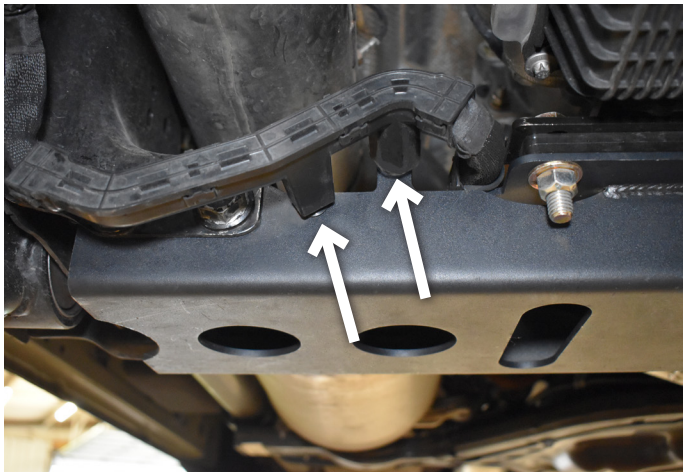
35. Reattach the front driveshaft to the Transfer case, new clamps are provided for the boot. Reattach the front drive shaft to the axle with OE hardware and thread locker, torque to 85ft-lbs. Rotate the front drive shaft to ensure it spins freely and clears exhaust and crossmember **Use the provided boot clamps to re secure the drive shaft boot.**
36. Reinstall rear driveshaft with factory hardware with Thread locker on threads. Tighten to 81 ft-lbs.
37. Using the provided zip / x-mas tree secure the wire harness to the cross member. Note: Do not use the OE clips as they do not offer enough clearance for the wiring. (Fig. 33)

**FIGURE 33**



38. Attach the harness to the front passenger side of the cross member using the OE wire cradle. (Fig. 34)

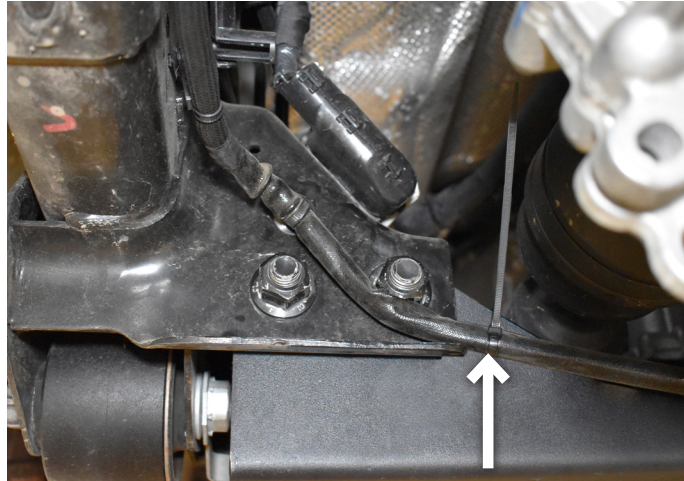
**FIGURE 34**



39. Attach the wiring harness to the rear driver side of the cross member using the provided cable tie clip. (Fig. 35)

**NOTE: If front kit and/or Rear kits are installed already. Reinstall the factory drive shafts using thread locker and OE torques. Otherwise please proceed/continue to installing the front and rear lift kits by following those instructions**

**FIGURE 35**



40. Recheck all hardware for proper torque. Check again after 500 miles and at regularly scheduled maintenance intervals.



### **WE WANT TO SEE YOUR RIDE!**

Grab photos of your BDS-equipped truck in action and send them in for a chance to be featured. Send it in to our Bad Ass Rides customer gallery at [bds-suspension.com/bar](http://bds-suspension.com/bar) and post them on the BDS Fan Page on Facebook at [facebook.com/BDSSuspensions](https://facebook.com/BDSSuspensions). Don't forget about your BDS swag! BDS offers t-shirts, hoodies, decals and more available on the BDS website or through your local BDS distributor.

---

## **TIME TO HAVE SOME FUN**

**Thank you for choosing BDS Suspension.**

For questions, technical support and warranty issues relating to this BDS Suspension product, please contact your distributor/installer before contacting BDS Suspension directly.

