



BRIGHT IS ONLY THE BEGINNING

# INSTALL GUIDE

## 2020+ A90 TOYOTA SUPRA XB TAIL LIGHTS

LF764/LF765



WARNING: IT IS THE INSTALLERS RESPONSIBILITY TO CONFIRM COMPLIANCE WITH STATE AND LOCAL LAWS. BY READING THIS DOCUMENT, YOU AGREE IT IS ONLY TO BE USED AS AN EDUCATIONAL GUIDE. MORIMOTO LIGHTING NOR ITS DEALERS MAKE GUARANTEES ON ANY FINISHED RESULTS, NOR ARE THEY TO BE HELD RESPONSIBLE FOR ANY DAMAGE, MISUSE, OR PERSONAL INJURIES. IF YOU ARE UNABLE TO CLEARLY UNDERSTAND AND ADAPT THE INFORMATION BELOW, PROFESSIONAL INSTALLATION IS RECOMMENDED.

IMPORTANT: IF YOUR VEHICLE IS EQUIPPED WITH ANYTHING BUT MORIMOTO OR OEM HEADLIGHTS, SIDE MARKERS OR OTHER OEM EXTERIOR LIGHTING; YOU MAY EXPERIENCE A HYPER FLASH AND/OR PROBLEM WITH THE SEQUENTIAL SIGNAL SETTING ON THESE TAIL LIGHTS. THIS IS NOT A DEFECT IN THE TAIL LIGHT AND CAUSED BY UN-MATCHED IMPEDANCE WITH YOUR ORIGINAL VEHICLE SETTINGS.



# 2020+ TOYOTA SUPRA TAIL LIGHTS

TABLE OF CONTENTS	PAGE
EXTERIOR DISASSEMBLY -----	3
INTERIOR DISASSEMBLY -----	8
RIGHT-SIDE TAIL LIGHT REMOVAL -----	12
LEFT-SIDE TAIL LIGHT REMOVAL -----	16
MODE CONFIGURATION -----	17
INSTALLATION -----	18

## WHAT'S INCLUDED



2X (PAIR) TAIL LIGHT ASSEMBLIES



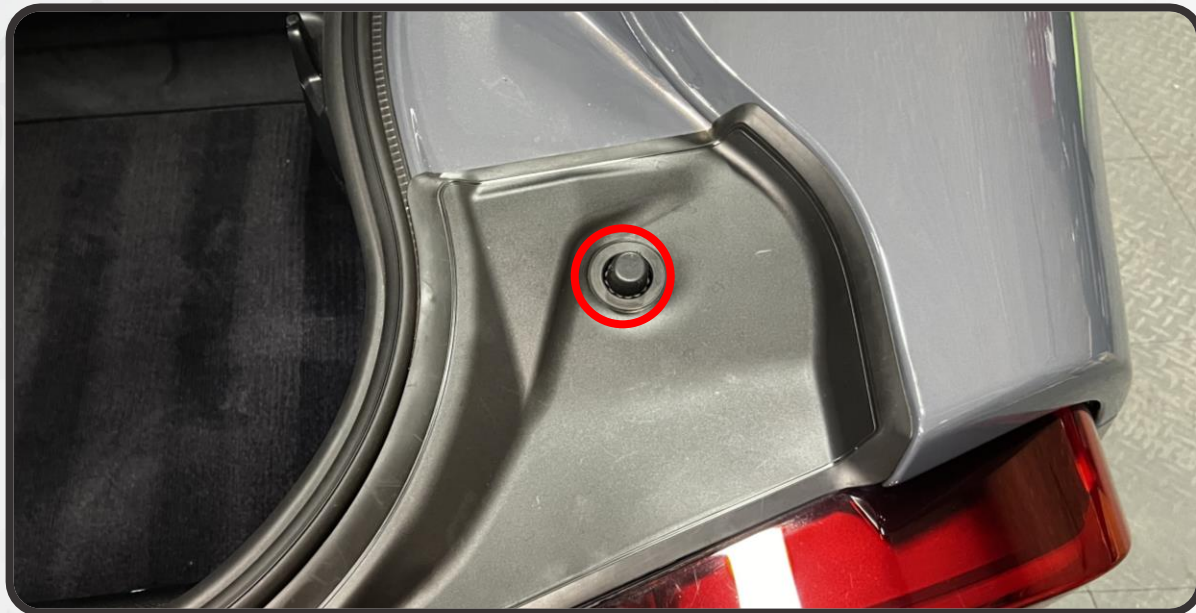
## REQUIRED TOOLS

- 1/4" RATCHET
- 8MM SOCKET
- 10MM DEEP SOCKET
- SOCKET EXTENSION
- TRIM REMOVAL TOOL
- T20 TORX DRIVER
- T30 TORX DRIVER

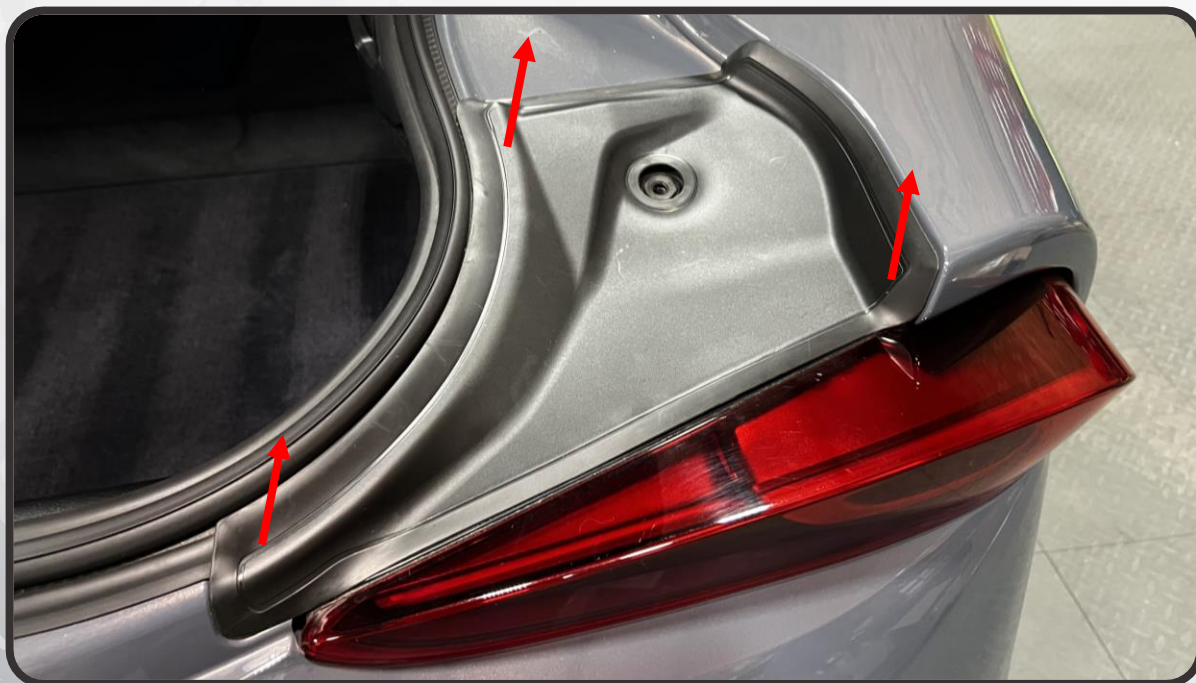


## EXTERIOR DISASSEMBLY

1. RAISE THE REAR HATCH OF THE CAR
2. UNSCREW AND REMOVE THE PLASTIC BUMP-STOP ON THE PLASTIC TRIM PANEL ABOVE THE TAILLIGHT ON EACH SIDE



3. PRY UP THE PLASTIC PANEL ABOVE THE TAILLIGHT, RELEASING THE THREE TABS SECURING IT AS YOU GO. DO THIS ON BOTH SIDES



## EXTERIOR DISASSEMBLY

4. REMOVE THE TWO T15 TORX SCREWS (ONE PER SIDE) THAT WERE COVERED BY THE PLASTIC PANEL



5. REMOVE THE THREE 8MM BOLTS FROM BEHIND THE REAR WHEEL. REMOVING THE WHEEL CAN MAKE THIS EASIER BUT IS NOT REQUIRED

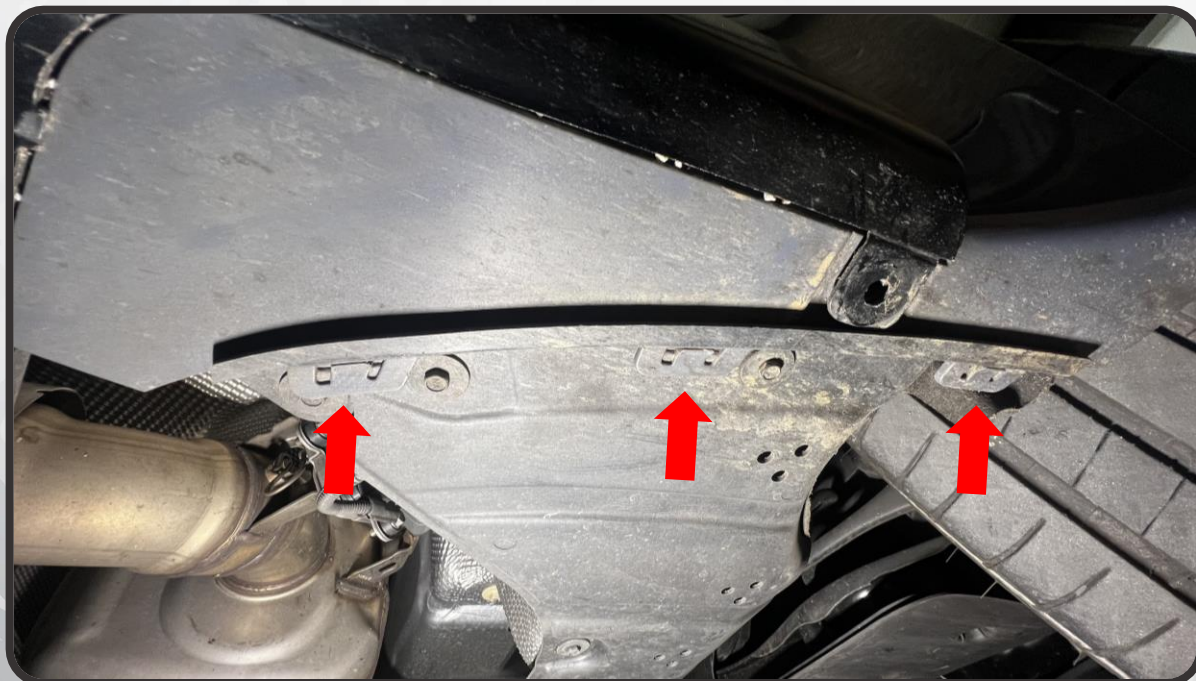


## EXTERIOR DISASSEMBLY

6. WITH THE THREE BOLTS SECURING THE WHEEL LINER REMOVED, PULL BACK THE LINER AND REMOVE THE 8MM BOLT SECURING THE BUMPER COVER TO THE BODY. AS YOU REMOVE THIS BOLT, WATCH TO MAKE SURE THE WASHER ON THE BOLT DOES NOT CATCH ON THE BRACKET, AS THIS WILL PREVENT IT FROM COMING OUT. IF IT STARTS TO CATCH, GENTLY PRY THE BOLT AWAY FROM THE BRACKET AS YOU REMOVE IT



7. RELEASE THE 3 CLIPS ON EACH SIDE OF THE BOTTOM OF THE BUMPER COVER BEHIND THE WHEEL BY DEPRESSING THE CENTER AND PUSHING THEM OUT

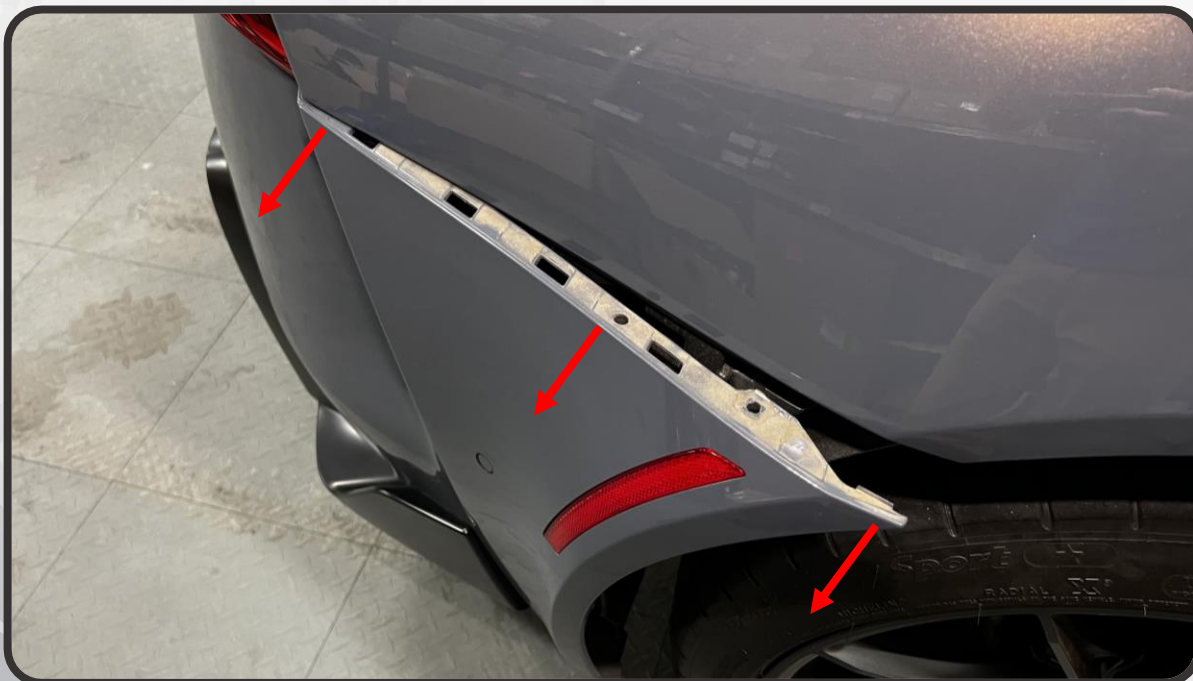


## EXTERIOR DISASSEMBLY

8. REPEAT STEPS 5-7 ON THE OPPOSITE SIDE
9. REMOVE THE FOUR 8MM BOLTS FROM THE UNDERSIDE OF THE BUMPER COVER



10. PULL THE SIDE OF THE REAR BUMPER COVER AWAY FROM THE VEHICLE, RELEASING IT FROM THE TABS THAT SECURE IT



## EXTERIOR DISASSEMBLY

11. CONTINUE TO THE REAR OF THE BUMPER COVER AND CONTINUE TO PULL THE BUMPER AWAY FROM THE CAR, RELEASING THE TABS BENEATH THE TAIL LIGHT. THIS CLIPS CAN BE DIFFICULT, AND MODERATE FORCE MAY BE REQUIRED, ESPECIALLY IF YOUR BUMPER COVER HAS NEVER BEEN REMOVED BEFORE

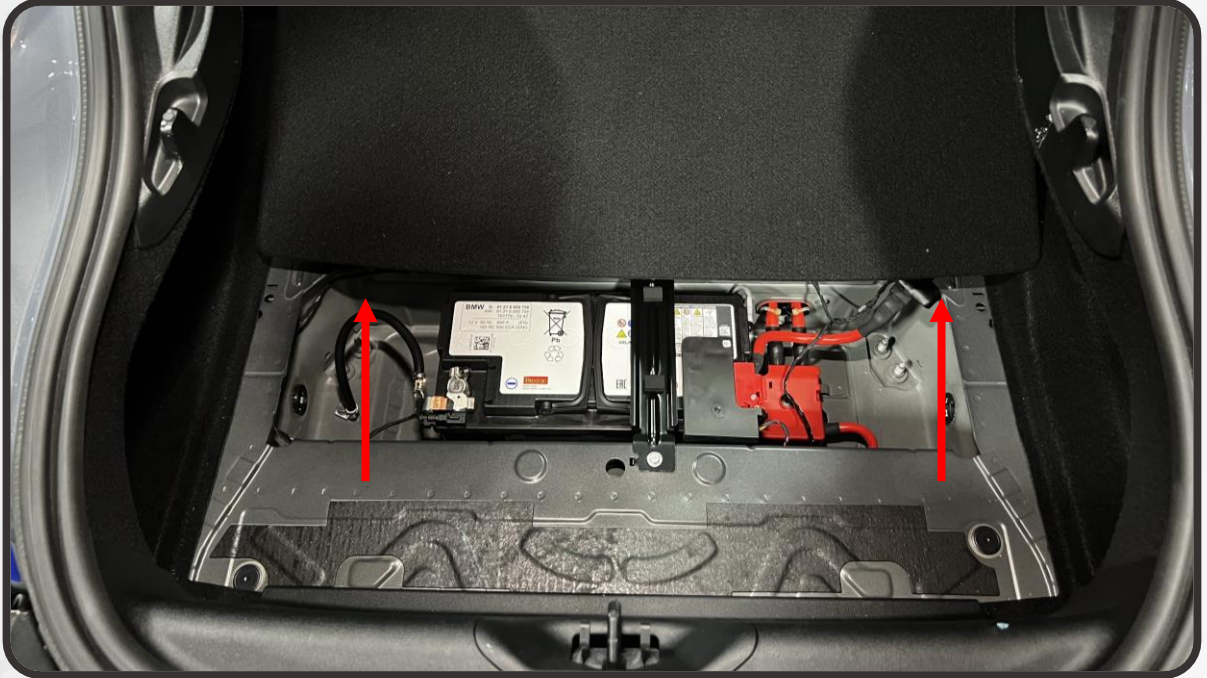


12. REPEAT STEPS 10 AND 11 ON THE OPPOSITE SIDE. ONCE THE BUMPER COVER HAS BEEN FREED ON THE SIDES AND BENEATH THE TAIL LIGHTS, YOU'LL HAVE ENOUGH ROOM TO REMOVE THE TAIL LIGHT LATER. THE CENTER PORTION OF THE BUMPER COVER CAN REMAIN ATTACHED TO THE CAR



## INTERIOR DISASSEMBLY

13. MOVING TO THE HATCH INTERIOR, REMOVE THE FLOOR MAT OR LINER IF EQUIPPED
14. PICK UP THE FLOOR PANEL OF THE HATCH, AND SLIDE IT FORWARD TOWARDS THE FRONT OF THE CAR TO GET IT OUT OF THE WAY



15. REMOVE THE TWO PUSH CLIPS IN THE REAR PANEL OF THE HATCH USING A TRIM REMOVAL TOOL



## INTERIOR DISASSEMBLY

16. ROTATE THE TWO LATCHES ON THE REAR ACCESS PANEL 90° TO UNLOCK THEM AND OPEN THE ACCESS PANEL

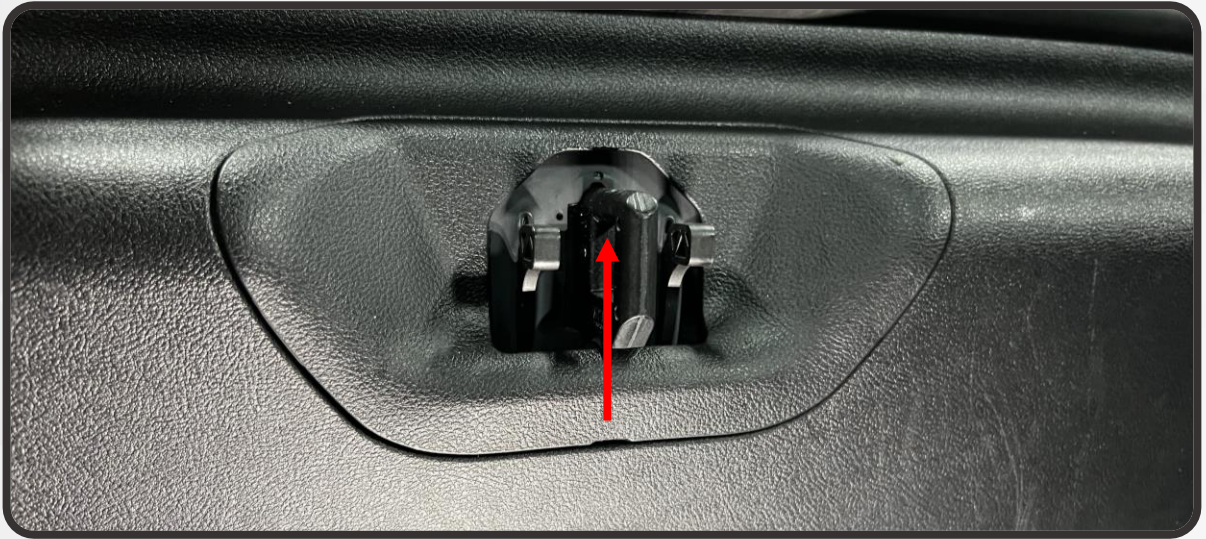


17. USING A T30 TORX DRIVER, REMOVE THE TWO TORX BOLTS BEHIND THE ACCESS PANEL



## INTERIOR DISASSEMBLY

18. REMOVE THE LATCH BEZEL BY PRYING UP IN THE MIDDLE WITH A TRIM REMOVAL TOOL

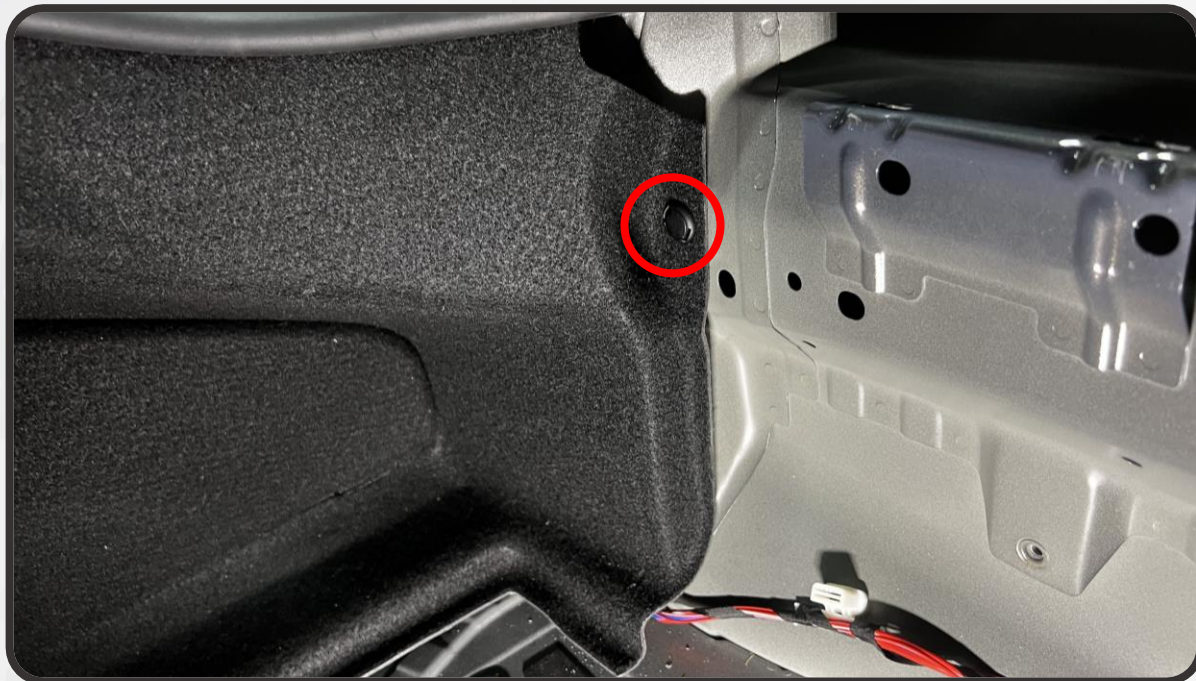


19. WHILE PULLING BACK THE WEATHER SEAL AT THE TOP, PULL UP ON THE REAR INTERIOR PANEL TO RELEASE THE 4 CLIPS THAT SECURE IT AT THE TOP. MODERATE FORCE IS REQUIRED

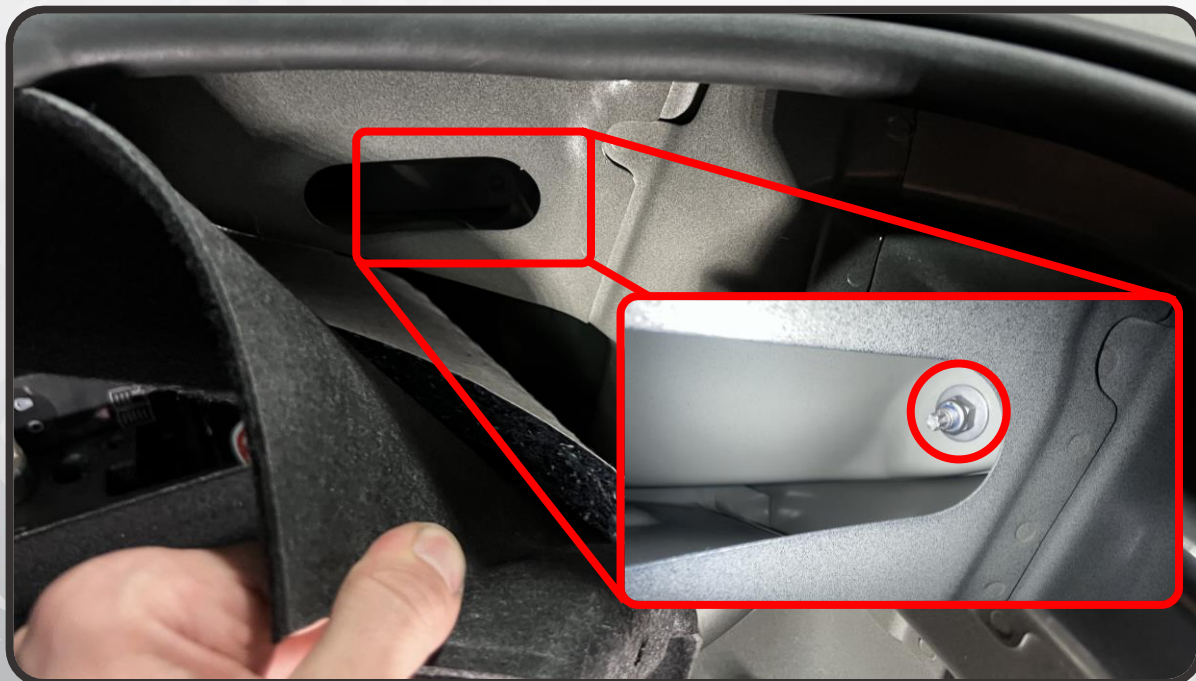


## INTERIOR DISASSEMBLY

20. REMOVE THE PUSH TAB SECURING THE CARPET ON EACH SIDE BY PRYING UP THE CENTER OF THE CLIP, AND THEN PRYING OUT THE BASE



21. PULL BACK THE SIDE CARPET AND REMOVE THE 10MM TAIL LIGHT NUT FROM INSIDE OF THE ACCESS HOLE BEHIND THE CARPET ON EACH SIDE OF THE CAR. TAKE CARE NOT TO DROP THIS NUT AS YOU REMOVE IT

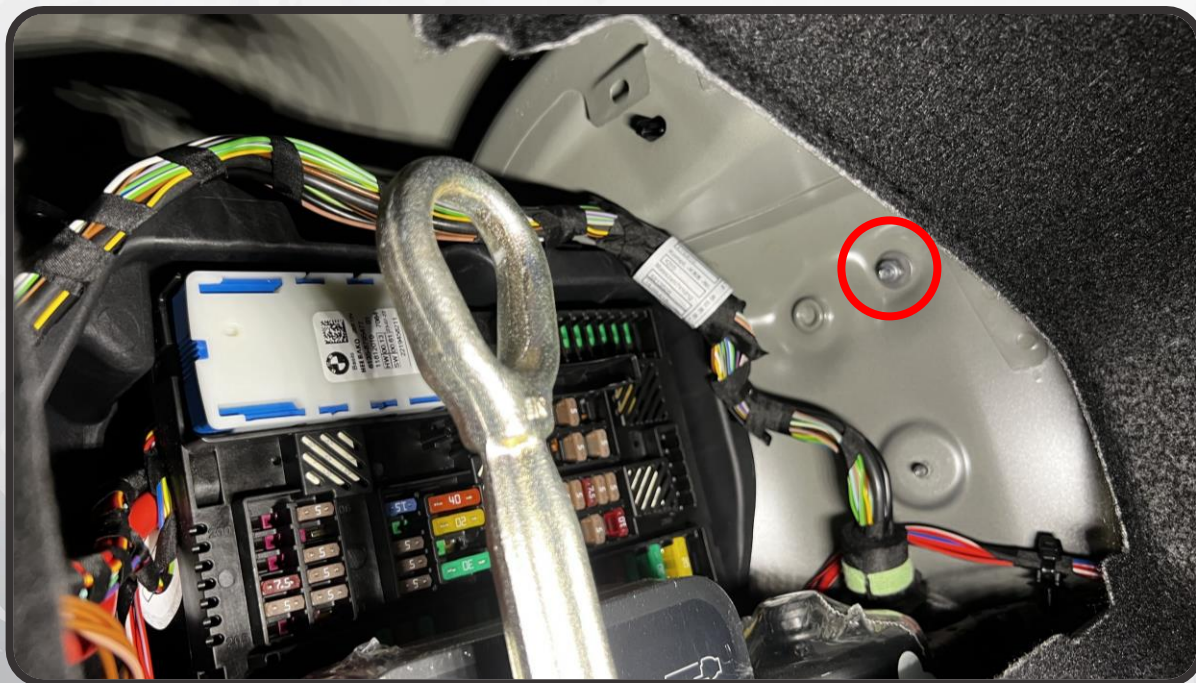


## RIGHT-SIDE TAIL LIGHT REMOVAL

22. ON THE RIGHT SIDE OF THE CAR, TURN THE LATCH ON THE SIDE ACCESS PANEL CLOCKWISE 90° AND REMOVE THE PANEL



23. THROUGH THIS ACCESS HOLE, THERE ARE TWO 10MM NUTS THAT NEED TO BE REMOVED. THE FIRST IS LOCATED TO THE RIGHT OF THE FUSE BOX



## RIGHT-SIDE TAIL LIGHT REMOVAL

24. THE SECOND NUT IS LOCATED JUST BEHIND THE FUSE BOX. YOU WILL HAVE TO REMOVE IT BY FEEL AS IT IS NOT VISIBLE WHEN LOOKING THROUGH THE ACCESS HOLE



## RIGHT-SIDE TAIL LIGHT REMOVAL

25. WITH THE THREE TAIL LIGHT NUTS REMOVED, YOU CAN NOW PULL THE TAIL LIGHT STRAIGHT BACK OFF OF THE CAR

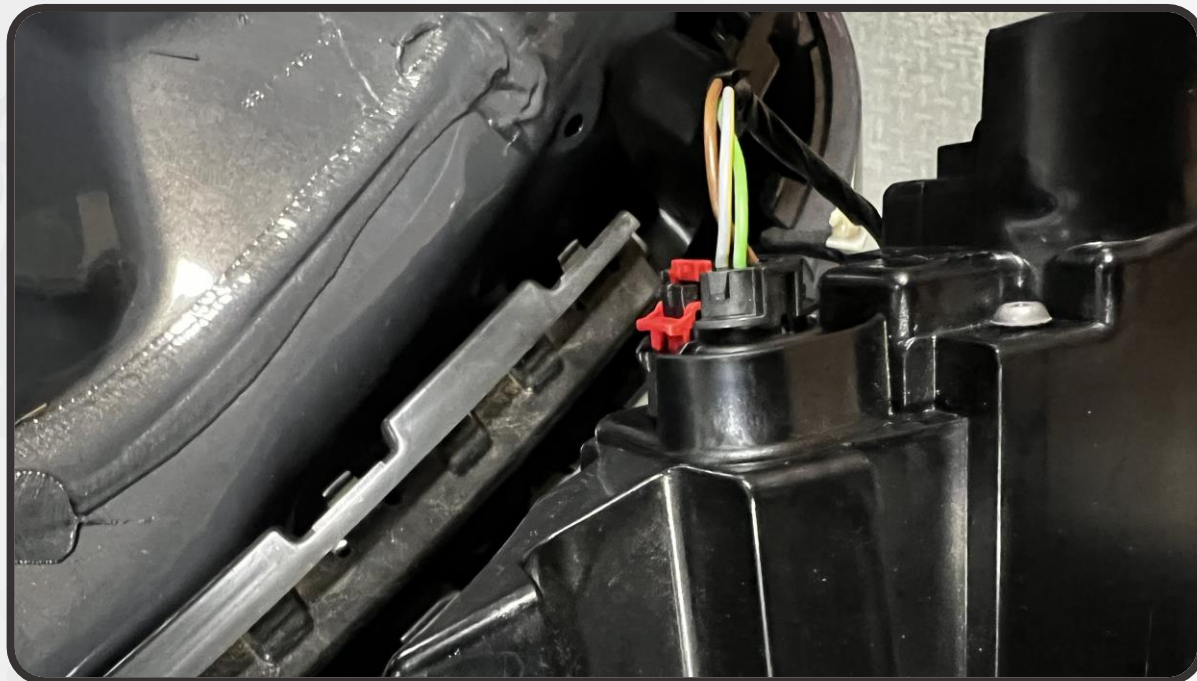


26. USING A PRY TOOL, PRY THE WIRE CLIP OFF OF THE LOWER TAB ON THE TAIL LIGHT



## RIGHT-SIDE TAIL LIGHT REMOVAL

27. ON THE TAIL LIGHT CONNECTOR, PULL BACK THE RED CLIP TO UNLOCK THE CONNECTOR, THEN DEPRESS THE BLACK TAB AND PULL BACK TO DISCONNECT THE TAIL LIGHT

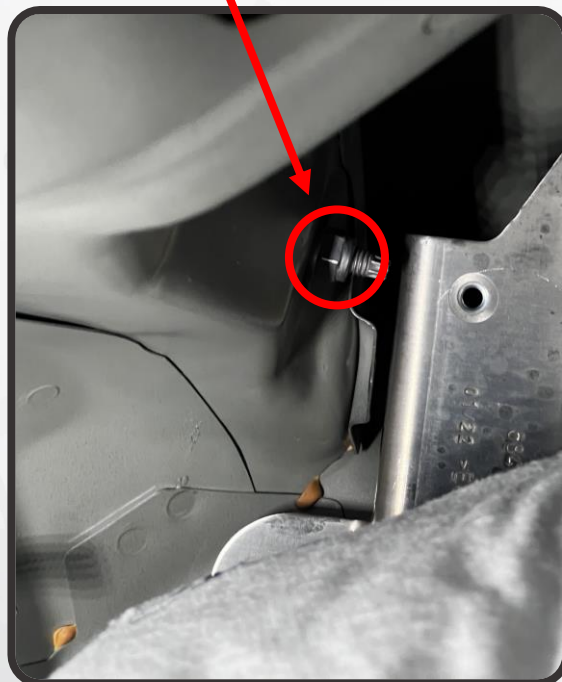
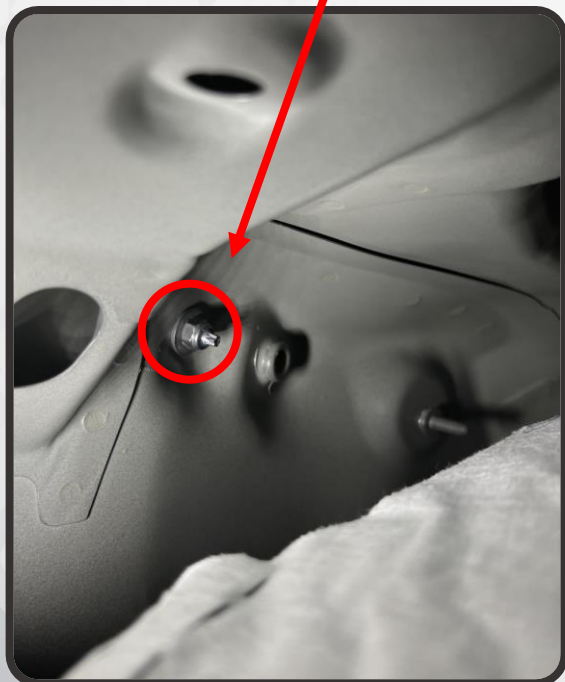


28. THE FACTORY TAIL LIGHT IS NOW FULLY DISCONNECTED FROM THE CAR AND CAN BE SET ASIDE



## LEFT-SIDE TAIL LIGHT REMOVAL

29. ON THE LEFT SIDE OF THE CAR, THERE IS NO ACCESS PANEL TO GO THROUGH, SO YOU WILL NEED TO FLEX THE SIDE CARPET LINER FORWARD AND DOWN SO THAT YOU CAN ACCESS THE TWO REMAINING NUTS SECURING THE TAIL LIGHT. TAKE CARE TO ONLY FLEX THE CARPET DOWN ENOUGH TO REACH IN AND REMOVE THE NUTS TO PREVENT CREASING THE CARPET

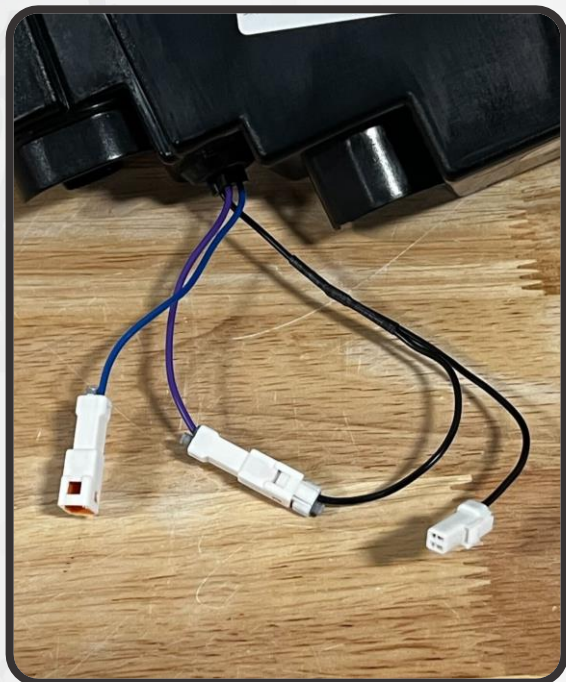


30. WITH THE HARDWARE REMOVED, REPEAT STEPS 25-28 ON THE LEFT SIDE TAIL LIGHT

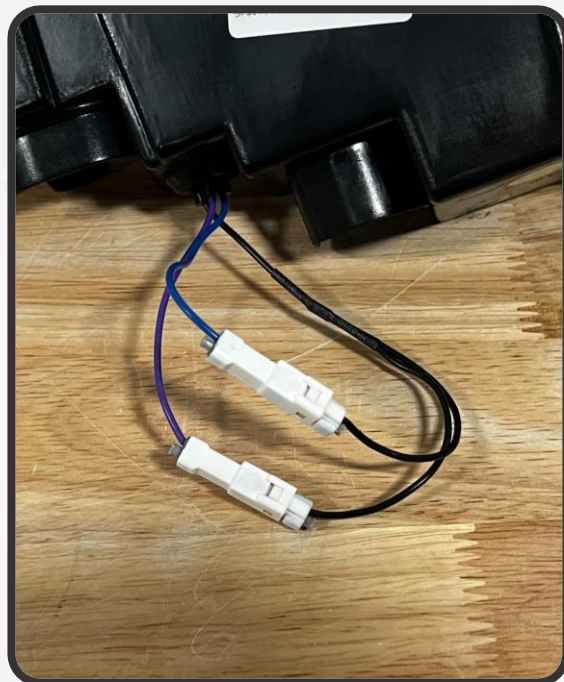


## MODE CONFIGURATION

31. USING THE WHITE CONNECTORS ON THE BACK OF THE TAIL LIGHT HOUSING, YOU CAN CONFIGURE THE TAIL LIGHTS TO ACTIVATE A START-UP SEQUENCE WHEN THE PARKING LIGHTS ARE TURNED ON, OR NOT, DEPENDING ON YOUR PERSONAL STYLE



**BLUE WIRE DISCONNECTED: START-UP SEQUENCE ENABLED**



**BLUE WIRE CONNECTED: START-UP SEQUENCE DISABLED**

## INSTALLATION

32. CONNECT THE NEW MORIMOTO XB TAIL LIGHT TO THE CAR AND SLIDE THE RED TAB ON THE CONNECTOR FORWARD TO LOCK IT IN PLACE. SECURE THE WIRE HARNESS TO THE TAB ON THE BOTTOM OF THE ASSEMBLY AS IT WAS ON THE FACTORY LIGHT
33. FIT THE TAIL LIGHT ONTO THE CAR AND REINSTALL THE THREE NUTS ONTO THE STUDS ON THE BACK OF THE LIGHT TO SECURE IT TO THE VEHICLE
34. REPEAT STEPS 32 AND 33 WITH THE OTHER TAIL LIGHT ASSEMBLY
35. GET IN THE CAR AND TEST TO CONFIRM THAT ALL FUNCTIONS ARE WORKING PROPERLY
36. REINSTALL THE REAR BUMPER AND HATCH INTERIOR TRIM IN THE REVERSE ORDER THAT YOU REMOVED THEM



- ENJOY YOUR NEW MORIMOTO XB TAIL LIGHTS! -

