

2019+ RAM HD XB LED TAIL LIGHTS INSTALL GUIDE

WARNING: By reading this document, you agree it is only to be used as an educational guide. Morimoto Lighting nor its dealers make guarantees on any finished results, nor are they to be held responsible for any damage, misuse, or personal injuries. If you are unable to clearly understand and adapt the information below, professional installation is recommended.

PACKAGE CONTENTS



**2X TAIL LIGHT ASSEMBLIES
(RED OR SMOKED)**



2 X INCANDESCENT ADAPTER HARNESS



2 X MAGNET MOUNT RESISTORS

IMPORTANT: These tail lights will work properly in unison with headlights from Morimoto but otherwise if your vehicle is equipped with anything but OEM turn signals (full assemblies, LED bulbs, or otherwise) in the headlights or elsewhere: You may experience a hyper flash and/or problem with the turn signal on these tail lights. This is not a defect in the tail light, and is caused by un-matched impedance with your original vehicle settings.

NOTE: THESE TAIL LIGHTS WILL NOT WORK ON A OEM LED BLIS EQUIPPED TRUCK, YOU WILL GET AN ERROR CODE ON YOUR DASH.

2019+ RAM HD 2500, 3500



TABLE OF CONTENTS

OEM TAIL LIGHT IDENTIFIER	PAGE 3
INSTALLATION PROCESS	
OEM INCANDESCENT	PAGE 4
OEM LED	PAGE 7
BOOST BAR LICENSE PLATE LIGHT (SOLD SEPARATELY)	PAGE 10

REQUIRED TOOLS

- RATCHET
- T25 TORX BIT
- FLAT HEAD SCREWDRIVER OR TRIM REMOVAL TOOL

OEM TAIL LIGHT IDENTIFIER



OEM INCANDESCENT
TAIL LIGHT



OEM LED NON BLIS
TAIL LIGHT

NOTE: THESE TAIL LIGHTS WILL NOT WORK ON A OEM LED BLIS EQUIPPED TRUCK, YOU WILL GET AN ERROR CODE ON YOUR DASH.

INSTALLATION PROCESS: OEM INCANDESCENT TAIL LIGHT



OEM INCANDESCENT
TAIL LIGHT

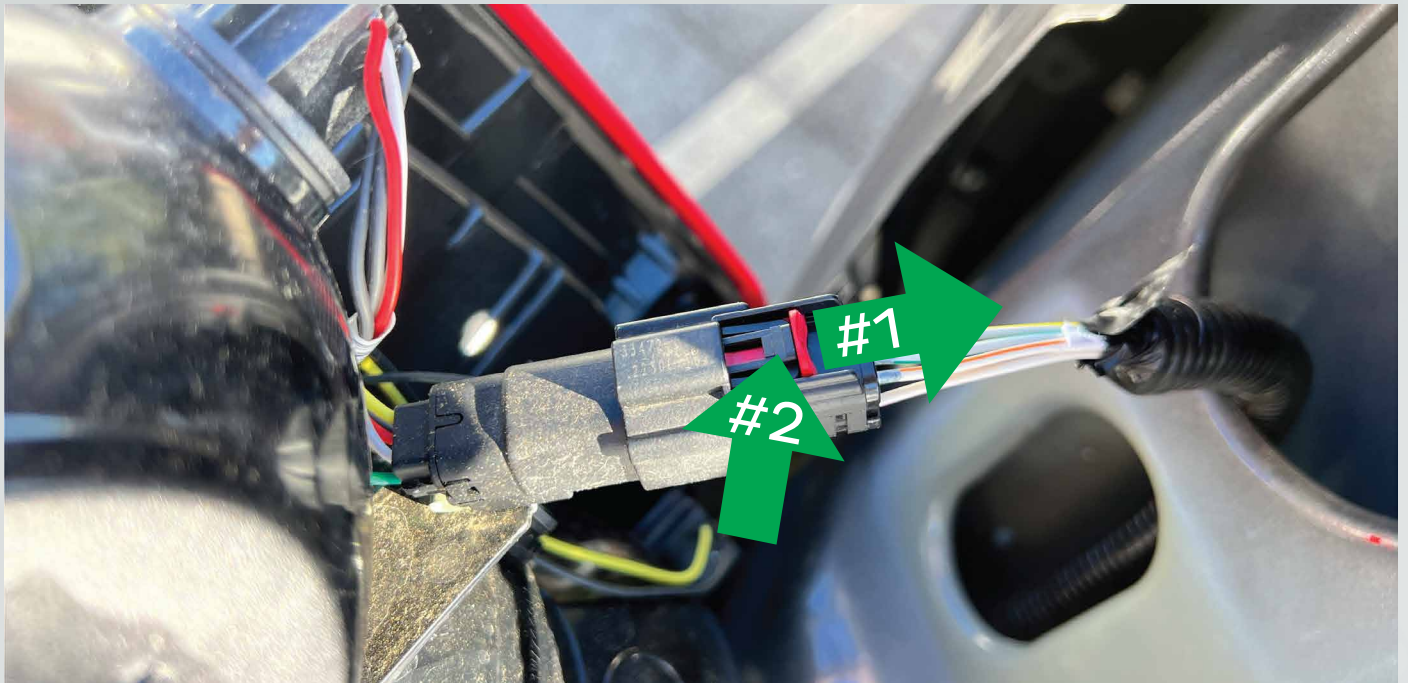
1. Open the tailgate and remove these 2 bolts (T25 torx) holding the tail light.



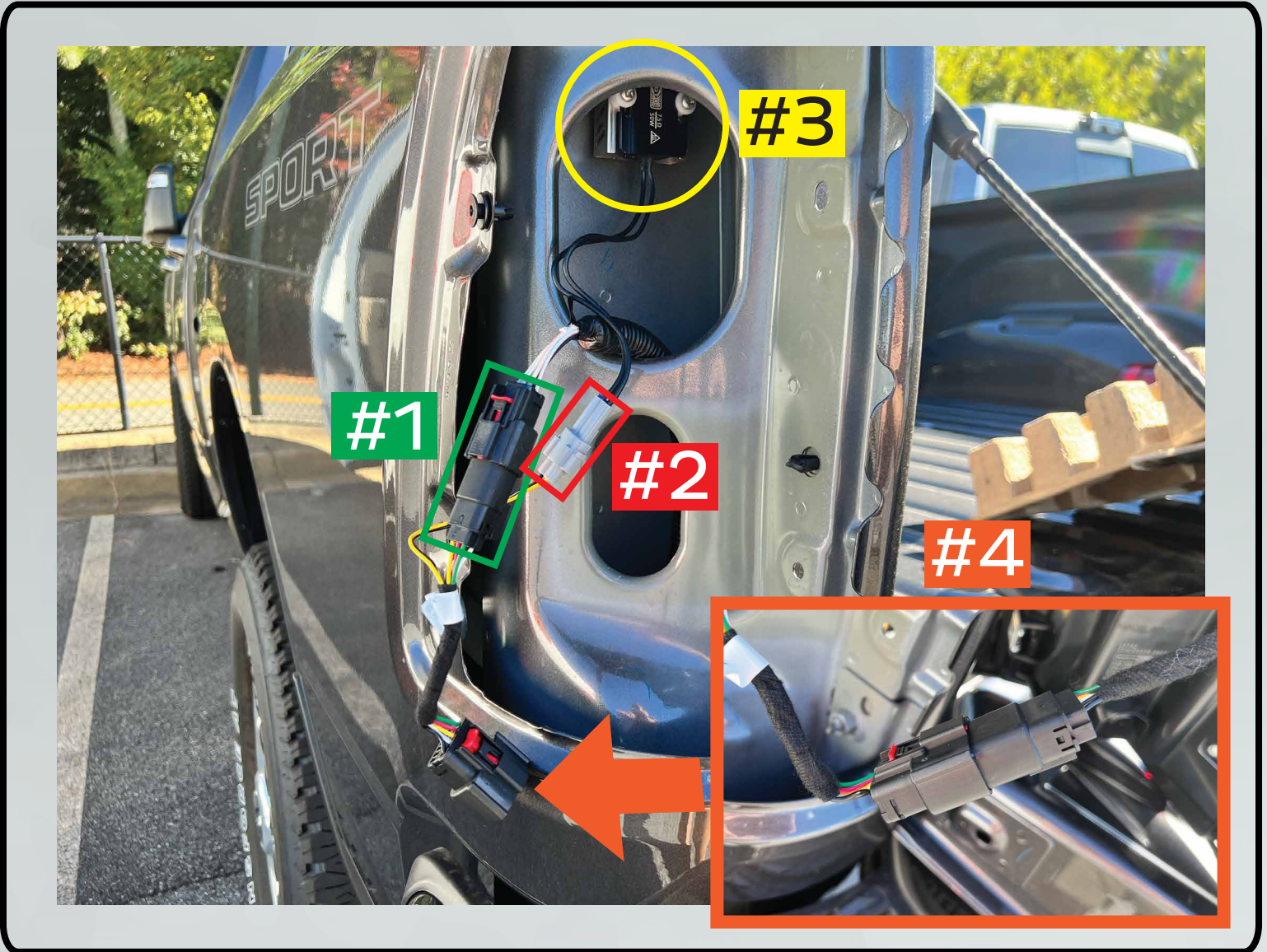
2. Insert a plastic trim tool in the gap shown below and pry the tail light backwards away from the bed.



3. Unplug the tail light connector by first releasing the locking tab (#1). Then press on the tab (#2) to release the clip and slide the connector off.



4. - Plug in the Incandescent Adapter Harness into your OEM harness (#1).
- Plug in the Magnet Mount Resistor, from the box, into the Incandescent Adapter Harness (#2).
- Pick an area where you want to mount your resistor, be sure to keep it away from the wiring. Wipe down that area and attach the Magnet Mount Resistor to the bed (#3).
- Plug in your Morimoto tail light into the Incandescent Adapter Harness (#4)



5. Install the tail light onto the truck. Secure it with the two (2) T25 Torx screws.
6. Repeat step 1-5 on the other side of the truck.
7. For steps on installing the Boost Bar go to page #10
8. Turn on the truck and go through all modes to confirm that all tail light functions work.

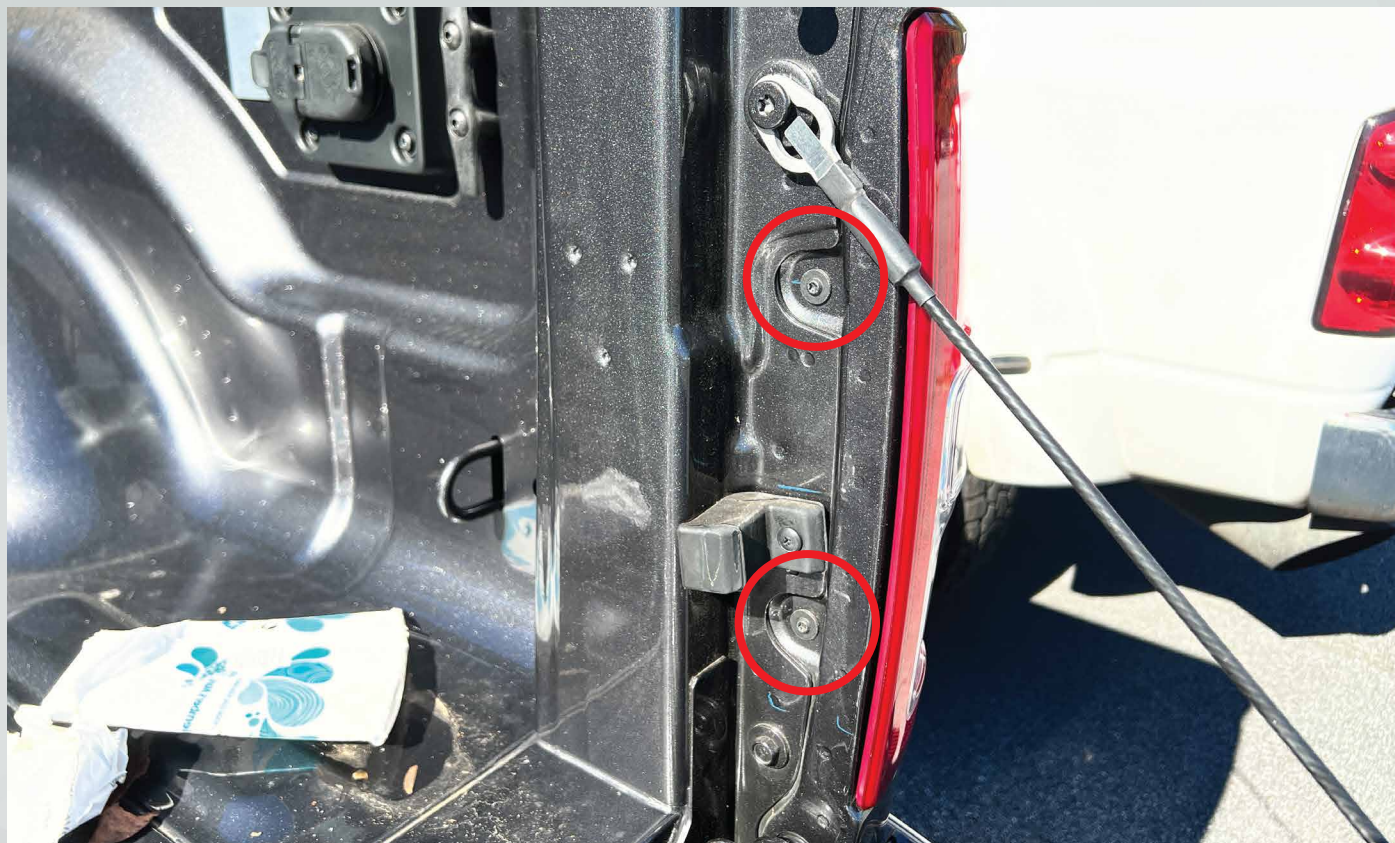
INSTALLATION PROCESS: OEM LED NON BLIS TAIL LIGHT



OEM LED NON BLIS TAIL LIGHT

NOTE: THESE TAIL LIGHTS WILL NOT WORK ON A OEM LED BLIS EQUIPPED TRUCK, YOU WILL GET AN ERROR CODE ON YOUR DASH.

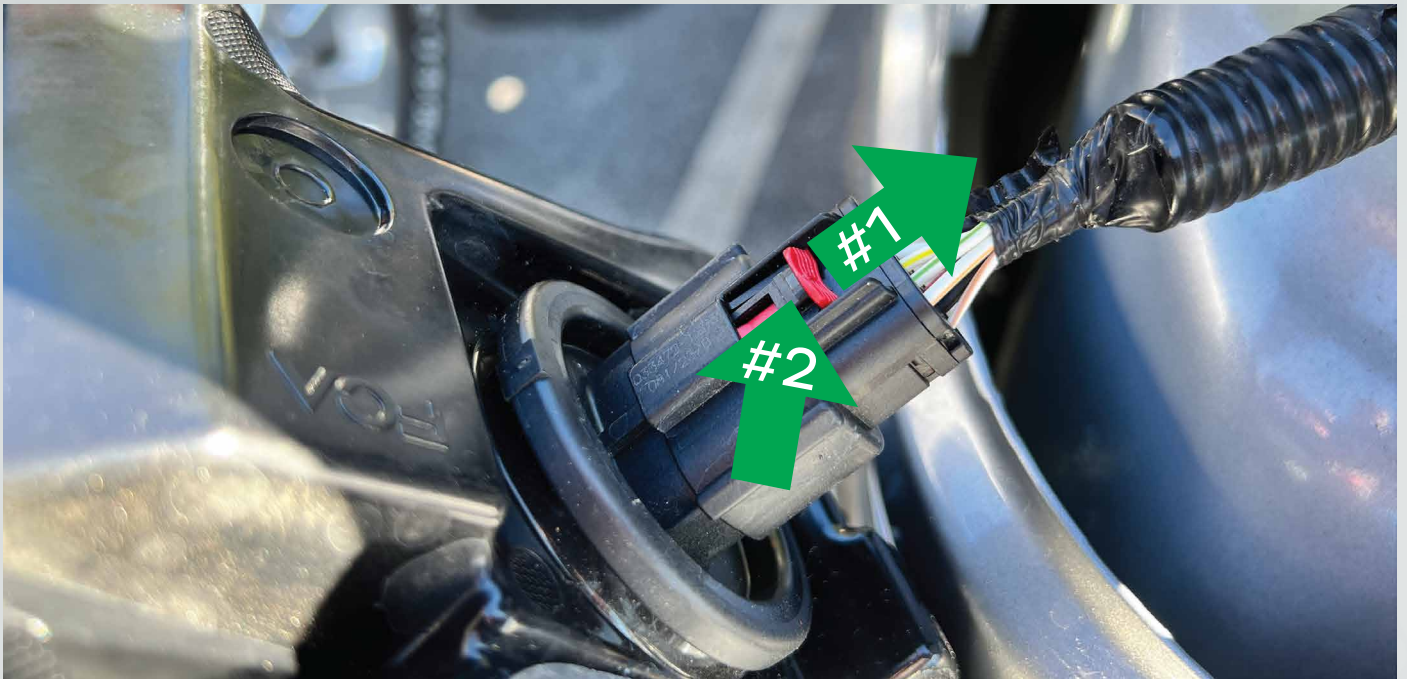
1. Open the tailgate and remove these 2 bolts (T25 torx) holding the tail light.



2. Insert a plastic trim tool in the gap shown below and pry the tail light backwards away from the bed.



3. Unplug the tail light connector by first releasing the locking tab (#1). Then press on the tab (#2) to release the clip and slide the connector off.



4. Grab a Morimoto tail light of the same side and plug it into the OEM tail light connector.



5. Install the tail light onto the truck. Secure it with the two (2) T25 Torx screws.

6. Repeat step 1-5 on the other side of the truck.

7. For steps on installing the Boost Bar go to page #10

8. Turn on the truck and go through all modes to confirm that all tail light functions work.

(SOLD SEPARATELY)



BOOST BAR LICENSE PLATE LIGHT INSTALL GUIDE

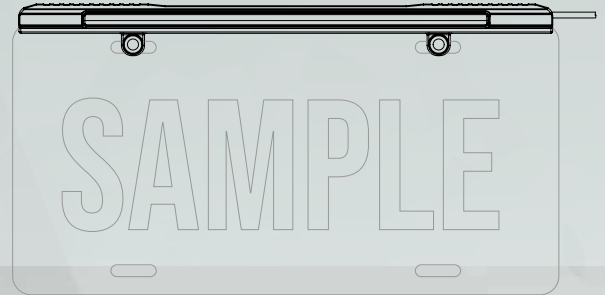
WARNING: By reading this document, you agree it is only to be used as an educational guide. Morimoto Lighting nor its dealers make guarantees on any finished results, nor are they to be held responsible for any damage, misuse, or personal injuries. If you are unable to clearly understand and adapt the information below, professional installation is recommended.

PACKAGE CONTENTS

- 1x Boost Bar License Plate Light
- 1x Input Pigtail (not needed in this application)
- 1x Double Wire T-Tap (not needed in this application)

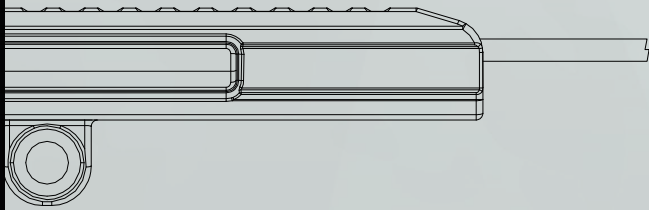
TOOLS REQUIRED

- Wire Cutters
- Zip Ties
- 1/4" Drill Bit
- Drill



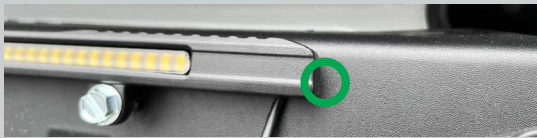
INSTALLATION PROCESS

BOOST BAR



1. Remove your license plate and bolt in the Boost Bar. Mark on the bumper where the wire needs to go through.

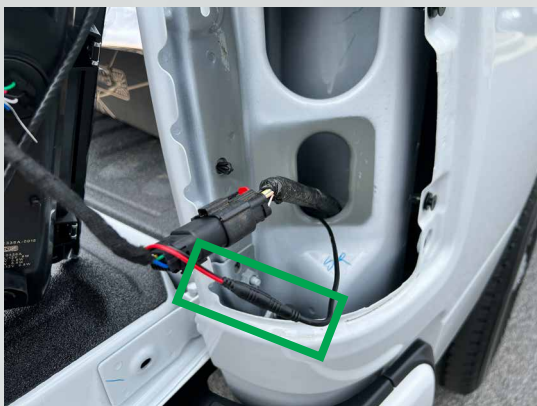
Drill a 1/4" hole in your bumper and pass the wiring through. and reinstall your license plate with Boost Bar.



2. Run the wiring behind the bumper along the top, and through the hole that goes to the passenger side tail light. Secure wire using zip ties.



3. Plug the boost bar connector into your Morimoto tail light wiring. Secure remaining wiring with zip ties.



DIRECT CONNECTION TO RIGHT MORIMOTO XB LED TAIL LIGHTS

