



BRIGHT IS ONLY THE BEGINNING

INSTALL GUIDE

XRGB LED HEADLIGHTS: DODGE CHARGER (15-23)

LF494



WARNING: IT IS THE INSTALLERS RESPONSIBILITY TO CONFIRM COMPLIANCE WITH STATE AND LOCAL LAWS. BY READING THIS DOCUMENT, YOU AGREE IT IS ONLY TO BE USED AS AN EDUCATIONAL GUIDE. MORIMOTO LIGHTING NOR ITS DEALERS MAKE GUARANTEES ON ANY FINISHED RESULTS, NOR ARE THEY TO BE HELD RESPONSIBLE FOR ANY DAMAGE, MISUSE, OR PERSONAL INJURIES. IF YOU ARE UNABLE TO CLEARLY UNDERSTAND AND ADAPT THE INFORMATION BELOW, PROFESSIONAL INSTALLATION IS RECOMMENDED.

IMPORTANT: IF YOUR VEHICLE IS EQUIPPED WITH ANYTHING BUT MORIMOTO OR OEM TAILLIGHTS, SIDE MARKERS OR OTHER OEM EXTERIOR LIGHTING; YOU MAY EXPERIENCE A HYPER FLASH AND/OR PROBLEMS WITH THE SEQUENTIAL SIGNAL SETTING ON THESE HEADLIGHTS. THIS IS NOT A DEFECT IN THE HEADLIGHT AND CAUSED BY UN-MATCHED IMPEDANCE WITH YOUR ORIGINAL VEHICLE SETTINGS.



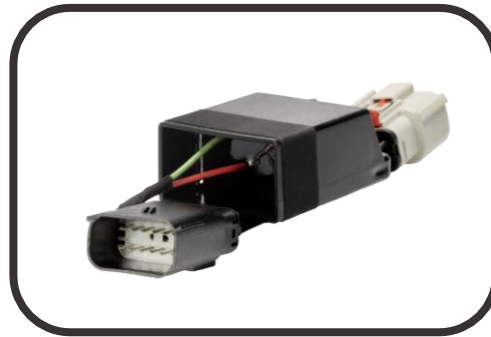
XRGB LED HEADLIGHTS: DODGE CHARGER (15-23)

TABLE OF CONTENTS	PAGE
DISASSEMBLY -----	3
INSTALLATION -----	9
AIMING -----	11
RGB CONTROLLER OPERATION -----	12

WHAT'S INCLUDED



2X (PAIR) HEADLIGHT ASSEMBLIES



2X HALOGEN ADAPTER HARNESSSES

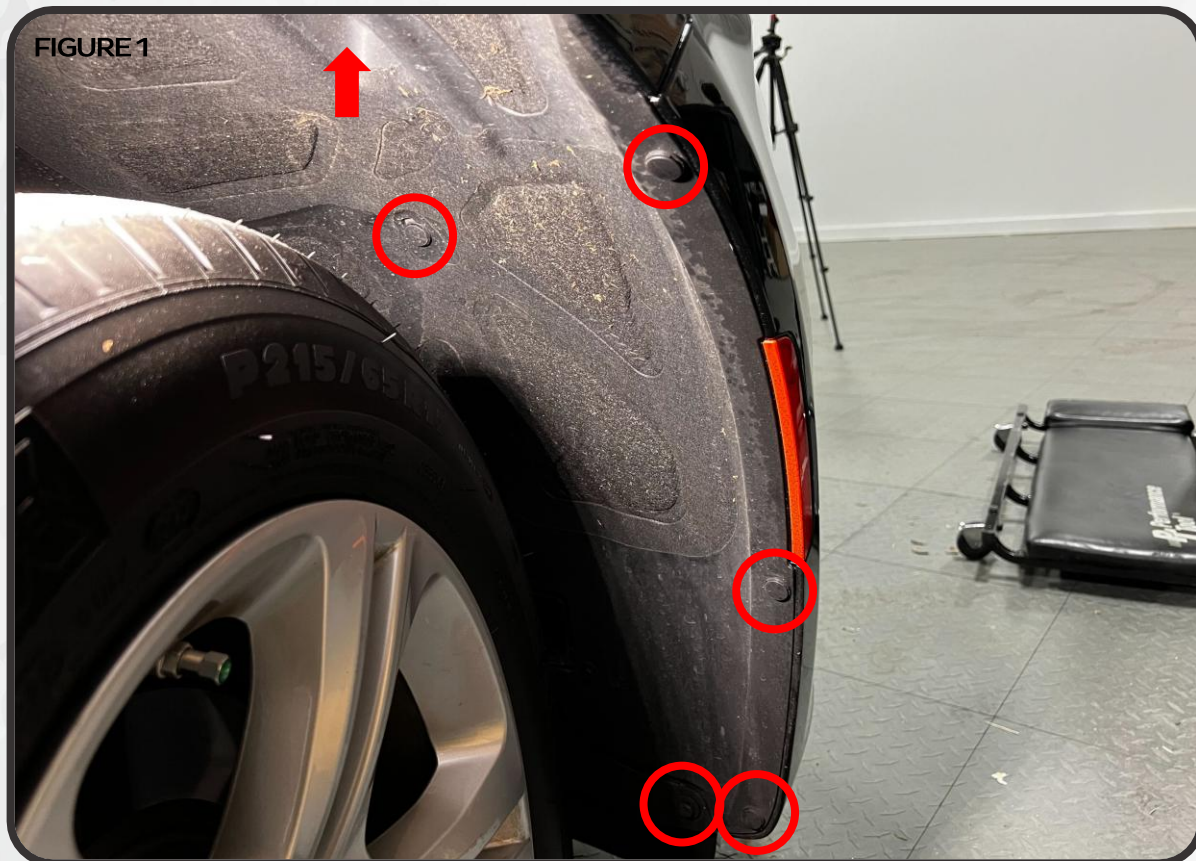
REQUIRED TOOLS

- RATCHET
- 7MM SOCKET
- 8MM SOCKET
- 10MM SOCKET
- SOCKET EXTENSION
- SMALL PRY TOOL
- ZIP TIES



DISASSEMBLY

1. BEGINNING IN THE FRONT WHEEL WELLS, REMOVE THE SIX PLASTIC PUSH-CLIPS FROM THE FENDER LINER (FIGURE 1) AND THE THREE 7MM SCREWS THAT SECURE THE DUCT TO THE FENDER LINER (FIGURE 2) (IF EQUIPPED, NOT ALL CARS HAVE THIS DUCT). TURN THE WHEEL ALL THE WAY TO ONE DIRECTION, AND THEN THE OTHER, TO GET ACCESS TO THE CLIPS AND SCREW HEADS



DISASSEMBLY

2. WITH THE CLIPS REMOVED, PULL THE FENDER LINER AWAY FROM THE EDGE OF THE BUMPER AND FENDER TO GAIN ACCESS TO THE BUMPER COVER HARDWARE LOCATED BEHIND. THIS FENDER LINER CAN BE VERY STIFF, AND YOU WILL HAVE TO USE MODERATE FORCE TO PULL IT FAR ENOUGH TO ACCESS THE HARDWARE



3. REACH UP INTO THE FENDER AND REMOVE THE TWO 10MM BOLTS THAT SECURE THE FRONT BUMPER COVER TO THE FENDER. THIS SPACE IS TIGHT, AND THE SMALLER THE RATCHET THE BETTER FOR THIS. ONCE YOU'VE LOOSENED THE BOLTS WITH THE RATCHET, YOU MAY FIND IT EASIEST TO UNSCREW THEM THE REST OF THE WAY USING JUST THE SOCKET AND YOUR FINGERS



DISASSEMBLY

4. UNPLUG THE SIDE MARKER LOCATED ON THE EDGE OF THE BUMPER COVER

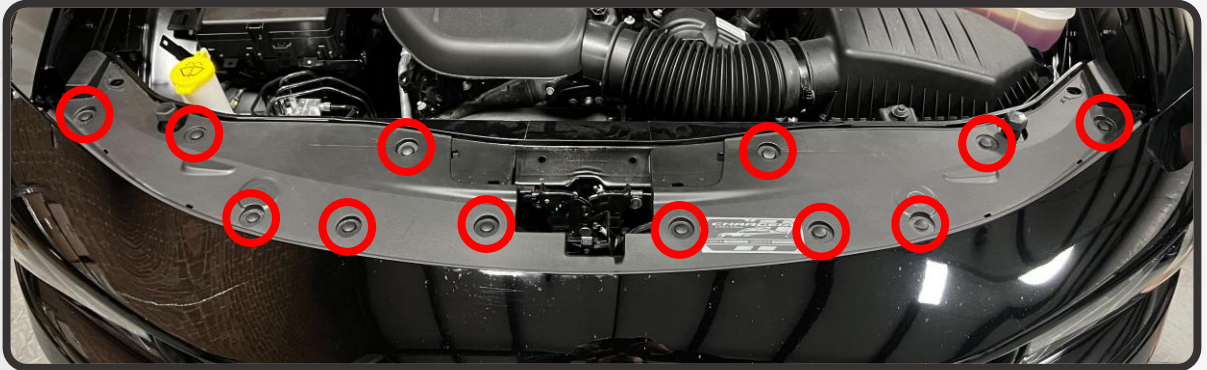


5. REPEAT STEPS 1-4 ON THE OPPOSITE SIDE OF THE CAR
6. MOVING TO THE UNDERSIDE OF THE FRONT BUMPER COVER, REMOVE THE SIX (THREE PER SIDE) 7MM BOLTS THAT SECURE THE BOTTOM OF THE BUMPER COVER TO THE CAR



DISASSEMBLY

7. RAISE THE HOOD OF THE VEHICLE
8. REMOVE THE TWELVE PLASTIC PUSH-CLIPS FROM THE PLASTIC RADIATOR COVER



9. USING EITHER A 10MM SOCKET OR T30 TORX BIT, REMOVE THE 10MM BOLT FROM THE FRONT CORNER OF EACH FENDER

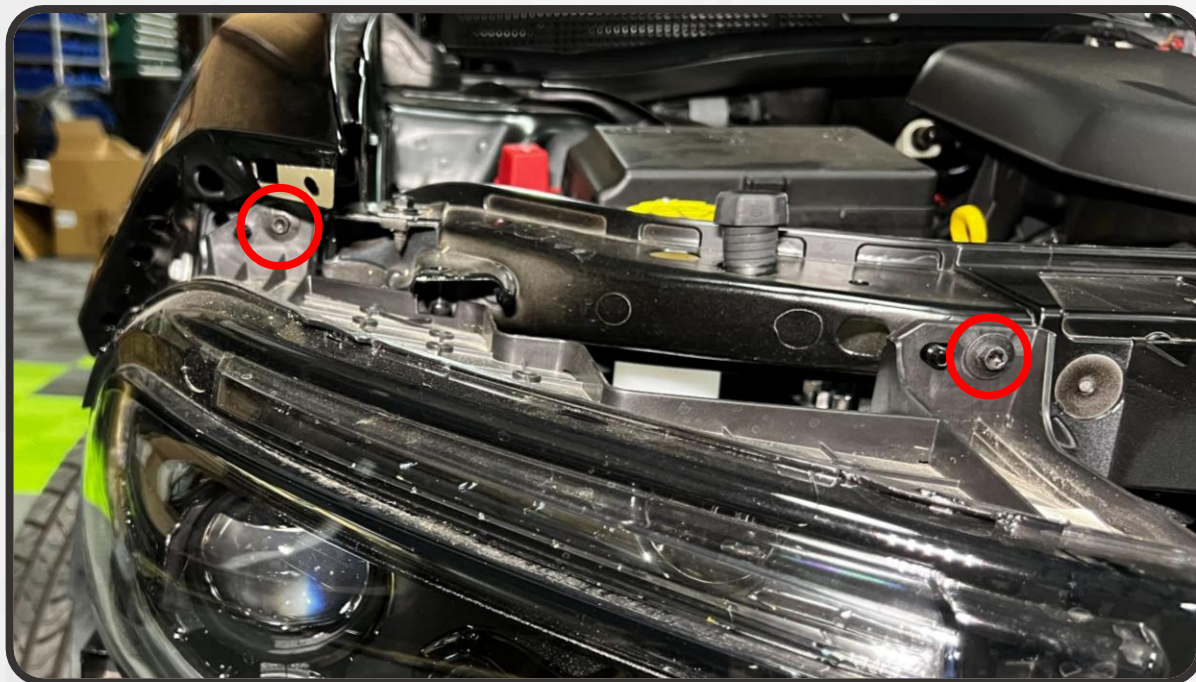


10. WITH ALL OF THE BUMPER COVER HARDWARE NOW REMOVED, PULL THE BUMPER COVER FORWARD, OFF OF THE CAR, DISCONNECT THE FOG LIGHTS (IF EQUIPPED), AND SET IT ASIDE

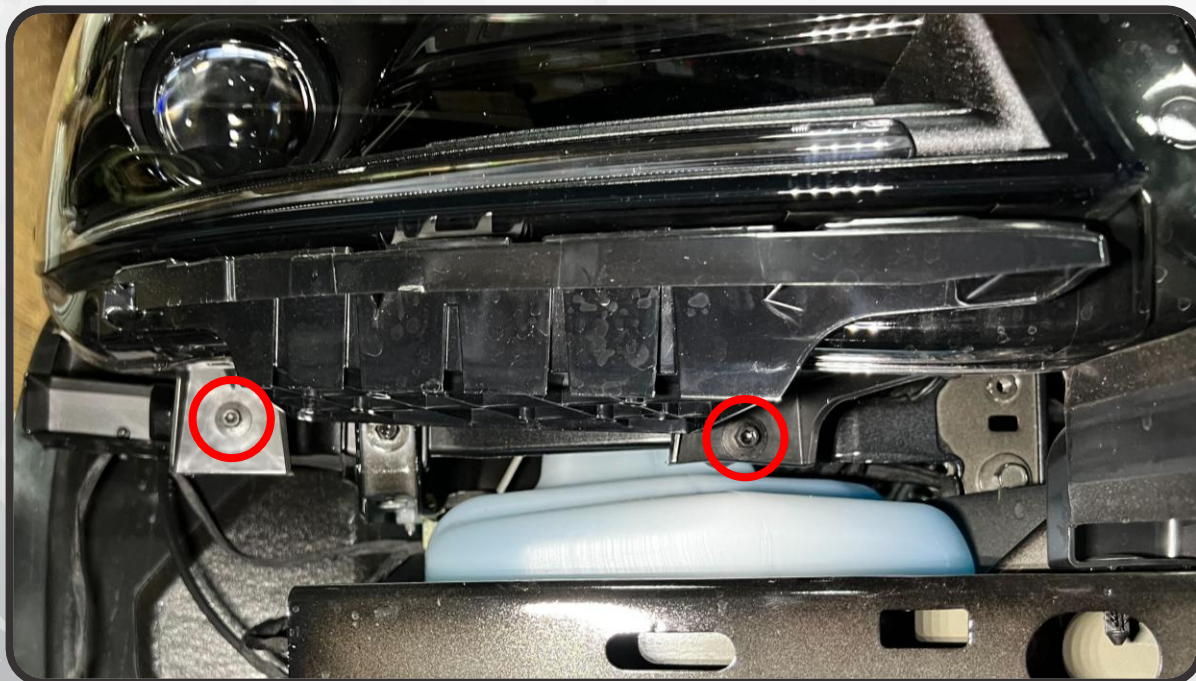


DISASSEMBLY

11. REMOVE THE TWO 8MM BOLTS FROM ABOVE THE HEADLIGHT



12. REMOVE THE TWO 8MM BOLTS FROM BELOW THE HEADLIGHT. BE SURE TO KEEP A HAND ON THE LIGHT AS YOU REMOVE THE LAST BOLT SO THAT THE HEADLIGHT DOESN'T FALL



DISASSEMBLY

13. PULL THE HEADLIGHT ASSEMBLY FORWARD, JUST OFF OF THE VEHICLE, AND DISCONNECT THE SINGLE HEADLIGHT PLUG FROM THE BACK OF THE ASSEMBLY

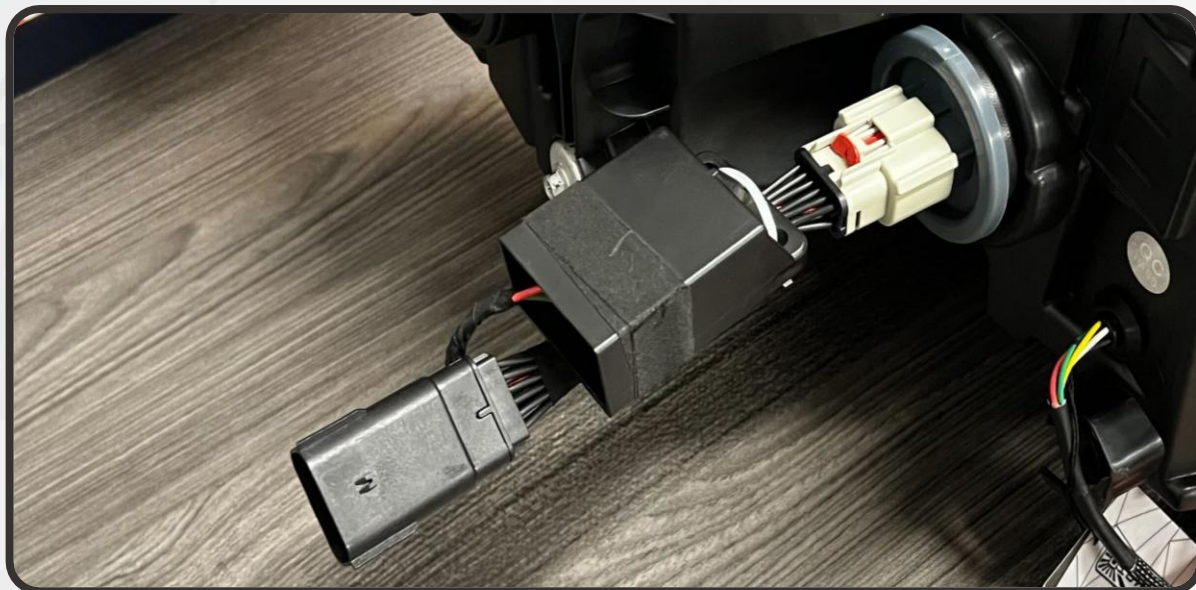


14. SET THE FACTORY HEADLIGHT ASSEMBLY ASIDE
15. REPEAT STEPS 11-14 ON THE OPPOSITE SIDE OF THE VEHICLE



INSTALLATION

16. IF YOUR CAR CAME WITH HALOGEN HEADLIGHTS FROM THE FACTORY, INSTALL THE INCLUDED HALOGEN ADAPTER HARNESS ONTO THE BACK OF EACH HEADLIGHT



17. PLUG THE VEHICLE'S HEADLIGHT CONNECTOR INTO THE BACK OF THE NEW MORIMOTO HEADLIGHT ASSEMBLY. FIT THE HEADLIGHT INTO THE HEADLIGHT CAVITY AND REINSTALL THE FACTORY HEADLIGHT HARDWARE TO SECURE IT. REPEAT ON THE OPPOSITE SIDE OF THE CAR



INSTALLATION

17. RUN THE RGB HARNESS FROM EACH HEADLIGHT TO THE CENTER OF THE UPPER RADIATOR SUPPORT AND CONNECT THEM. SECURE ALL LOOSE/EXCESS WIRING TO THE UPPER RADIATOR SUPPORT USING ZIP TIES

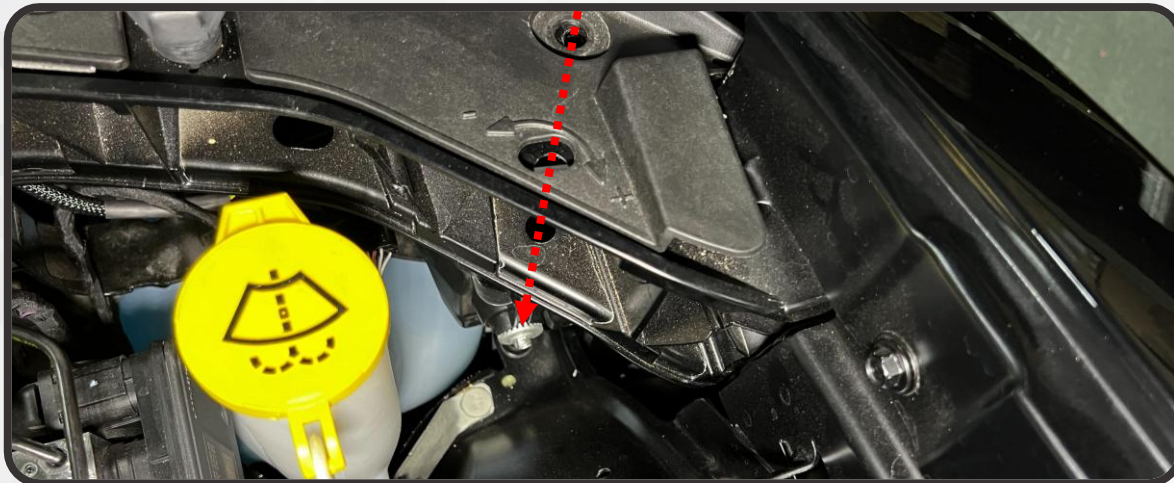


18. GET IN THE CAR AND CONFIRM THAT ALL FUNCTIONS ARE WORKING PROPERLY
19. REASSEMBLE THE FRONT OF THE CAR IN THE REVERSE ORDER OF DISASSEMBLY

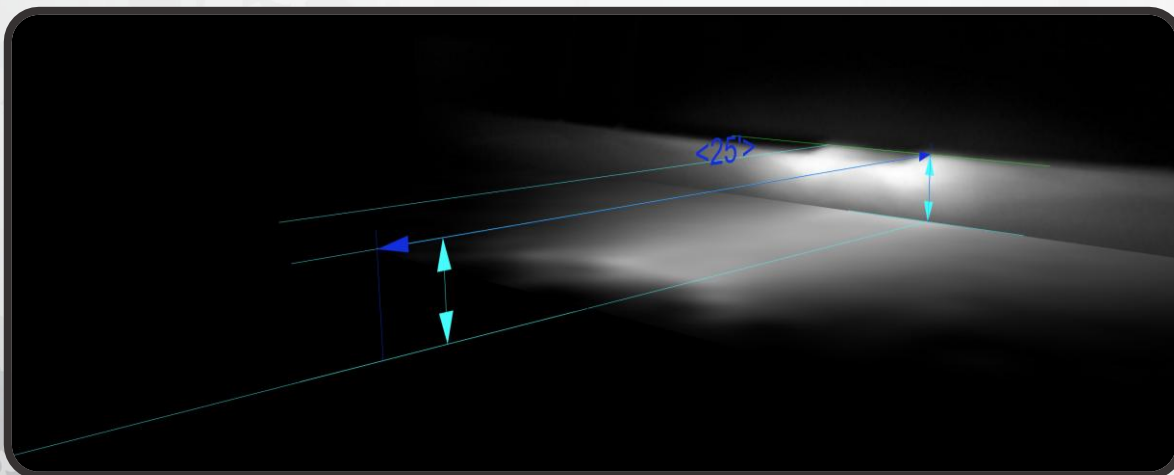


AIMING

20. THE HEADLIGHTS COME OUT OF THE BOX AIMED FOR STOCK RIDE HEIGHT, HOWEVER IT IS RECOMMENDED TO FINE TUNE THE AIM OF YOUR LOW BEAM AFTER INSTALLATION REGARDLESS. USING A LONG PHILLIPS HEAD SCREWDRIVER DOWN THE BACK OF THE HEADLIGHT TO THE ADJUSTER GEAR, FOLLOW THE INSTRUCTIONS BELOW TO PROPERLY ALIGN YOUR HEADLIGHTS' LOW BEAM CUTOFF (THE UPPER HORIZONTAL EDGE OF THE LOW BEAM)



21. WITH THE VEHICLE PARKED ON LEVEL GROUND, 25' FROM A WALL, MEASURE THE DISTANCE FROM THE GROUND TO THE OPTICAL CENTER OF THE PROJECTOR IN THE HEADLIGHT
- IF THE DISTANCE FROM THE GROUND TO THE OPTICAL CENTER IS LESS THAN 34.5", ADJUST THE TOP OF THE HEADLIGHT CUTOFF TO THE SAME HEIGHT AS THE HEADLIGHT MEASUREMENT YOU TOOK
 - IF THE HEIGHT IS BETWEEN 35"-39", ADJUST THE CUTOFF TO 2" BELOW YOUR HEADLIGHT MEASUREMENT
 - IF THE HEIGHT IS GREATER THAN 39.5", ADJUST THE CUTOFF TO 3" BELOW YOUR HEADLIGHT MEASUREMENT

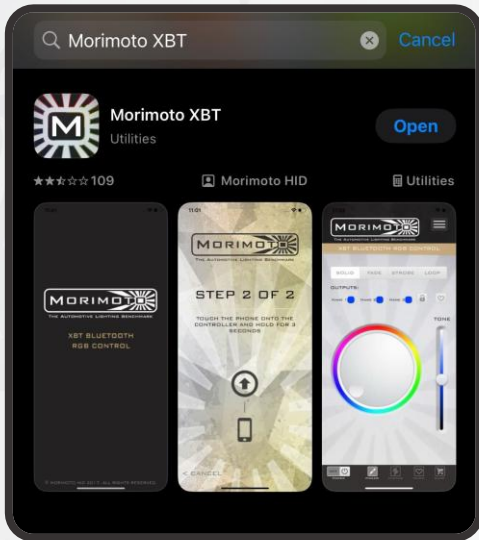


NOTE: AIMING SHOULD NOT REQUIRE MORE THAN THREE FULL TURNS OF THE ADJUSTER IN EITHER DIRECTION. OVER-ADJUSTING THE LIGHT MAY RESULT IN DAMAGE TO THE ADJUSTER

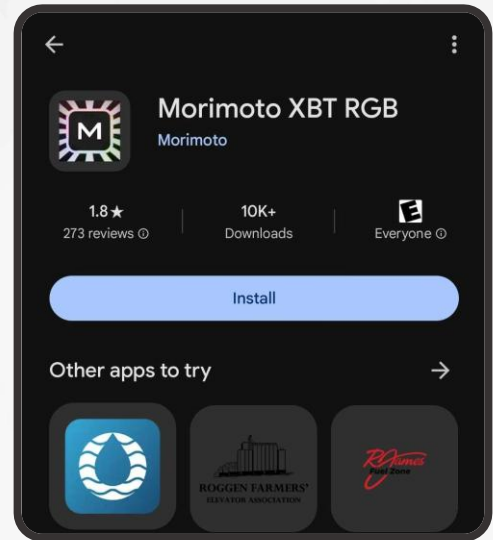


RGB CONTROLLER OPERATION

22. THE RGB DAYTIME RUNNING LIGHT IS CONTROLLED VIA AN APP ON YOUR SMARTPHONE. DOWNLOAD THE FREE MORIMOTO XBT APP TO GET STARTED

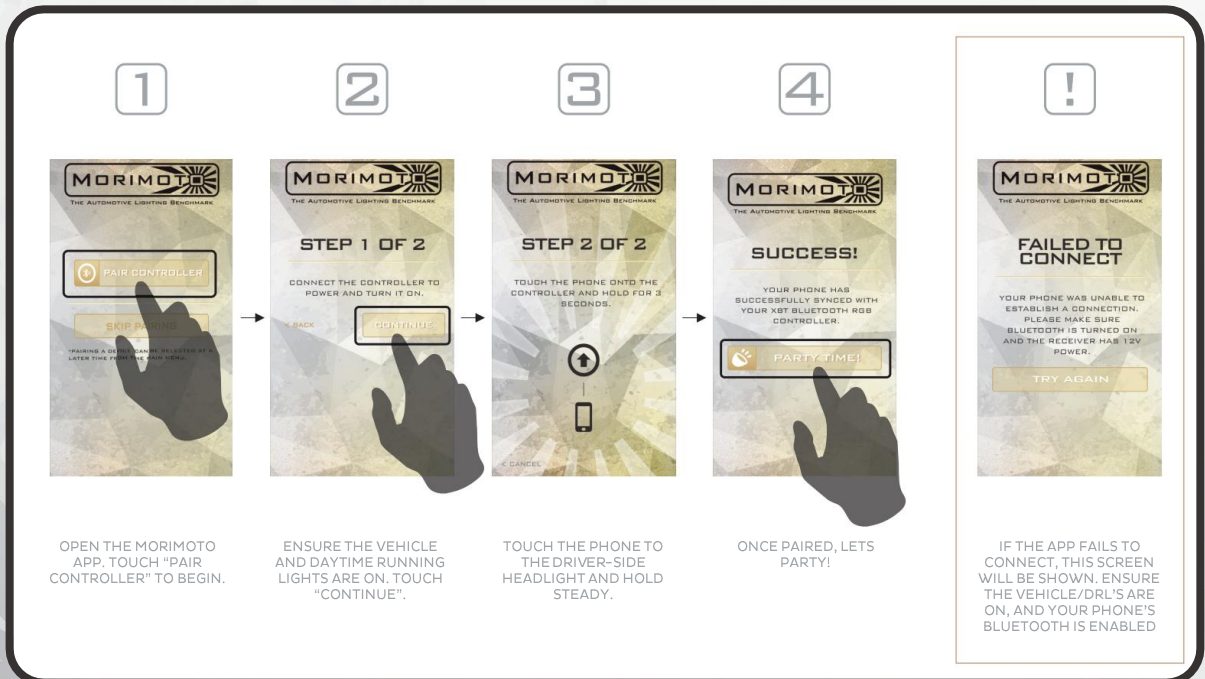


iOS



ANDROID

23. OPEN THE APP AND FOLLOW THE PROMPTS ON THE SCREEN TO PAIR YOUR PHONE TO THE HEADLIGHTS



RGB CONTROLLER OPERATION

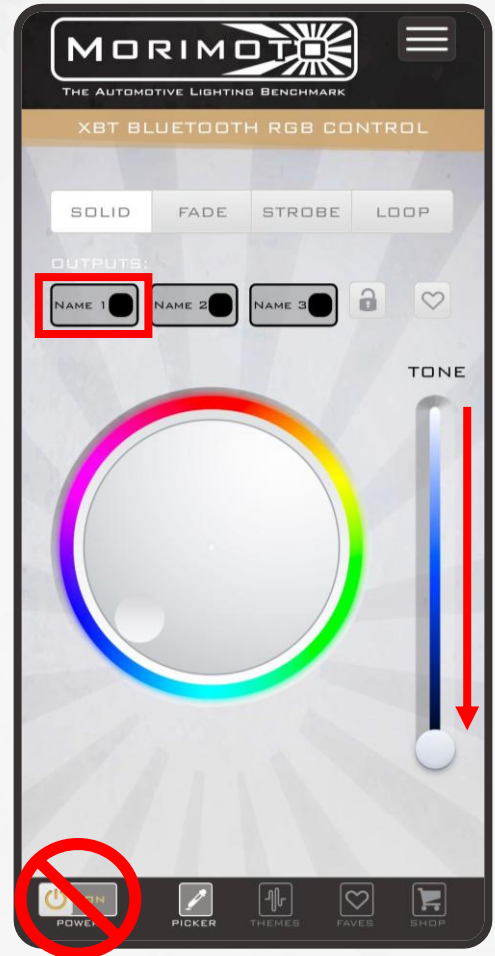
FUNCTION NOTES

MAKE SURE YOUR APP IS SET TO "OUTPUT 1"

TO SWITCH FROM RGB TO THE DEDICATED WHITE DAYTIME RUNNING LIGHT, SIMPLY SLIDE THE TONE BAR ON THE RIGHTHAND SIDE OF THE SCREEN ALL THE WAY DOWN TO THE BOTTOM

DO NOT USE THE ON/OFF TOGGLE IN THE BOTTOM LEFT TO TURN OFF THE DAYTIME RUNNING LIGHT AS THIS WILL TURN OFF THE CONTROLLER ENTIRELY. VEHICLE IGNITION WILL NEED TO BE CYCLED OFF AND BACK ON TO POWER THE CONTROLLER ON AGAIN

THE CONTROLLER IS DESIGNED SO THAT WHEN THE VEHICLE IS TURNED ON, THE DAYTIME RUNNING LIGHT WILL DEFAULT TO THE COLOR IT WAS LAST SET TO



XRGB LED HEADLIGHTS: DODGE CHARGER (15-23)



- ENJOY YOUR NEW MORIMOTO XRGB HEADLIGHTS! -

