



BRIGHT IS ONLY THE BEGINNING

INSTALL GUIDE

XB EVO HEADLIGHTS: NISSAN 370Z (09-21)

LF2-474R/LF2-474Y



WARNING: IT IS THE INSTALLERS RESPONSIBILITY TO CONFIRM COMPLIANCE WITH STATE AND LOCAL LAWS. BY READING THIS DOCUMENT, YOU AGREE IT IS ONLY TO BE USED AS AN EDUCATIONAL GUIDE. MORIMOTO LIGHTING NOR ITS DEALERS MAKE GUARANTEES ON ANY FINISHED RESULTS, NOR ARE THEY TO BE HELD RESPONSIBLE FOR ANY DAMAGE, MISUSE, OR PERSONAL INJURIES. IF YOU ARE UNABLE TO CLEARLY UNDERSTAND AND ADAPT THE INFORMATION BELOW, PROFESSIONAL INSTALLATION IS RECOMMENDED.

IMPORTANT: IF YOUR VEHICLE IS EQUIPPED WITH ANYTHING BUT MORIMOTO OR OEM TAILLIGHTS, SIDE MARKERS OR OTHER OEM EXTERIOR LIGHTING; YOU MAY EXPERIENCE A HYPER FLASH AND/OR PROBLEMS WITH THE SEQUENTIAL SIGNAL SETTING ON THESE HEADLIGHTS. THIS IS NOT A DEFECT IN THE HEADLIGHT AND CAUSED BY UN-MATCHED IMPEDANCE WITH YOUR ORIGINAL VEHICLE SETTINGS.



XB EVO HEADLIGHTS: NISSAN 370Z (09-21)

TABLE OF CONTENTS	PAGE
DISASSEMBLY -----	3
HEADLIGHT SETUP -----	11
WIRING/INSTALLATION -----	13
HEADLIGHT AIMING -----	18
RGB CONTROLLER OPERATION -----	19

WHAT'S INCLUDED



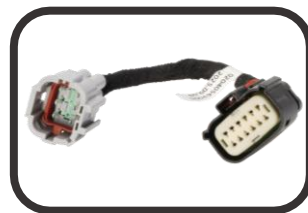
**2X (PAIR)
HEADLIGHT
ASSEMBLIES**



**1X DRL FUSE TAP
HARNESS**



**1X DRL FUSE TAP
HARNESS**



**2X HEADLIGHT
INPUT HARNESSES**



**4X PAIRS OF MODE
SELECTOR KEYS
(RGB MODEL ONLY)**



**2X MODE SELECTOR
EXTENSION
HARNESSES (RGB
MODEL ONLY)**



**1X RGB
CROSSOVER
HARNESS (RGB
MODEL ONLY)**

REQUIRED TOOLS

- PRY TOOL**
- RATCHET**
- 10MM SOCKET**
- PHILLIP'S HEAD SCREWDRIVER**



DISSASSEMBLY

THIS DOCUMENT IS MEANT TO SERVE AS A GENERAL GUIDE FOR VEHICLE DISASSEMBLY AND PRODUCT INSTALLATION. WHILE WE TRY TO COVER THE PROCESS AS THOROUGHLY AS POSSIBLE, YOUR EXPERIENCE MAY DIFFER SLIGHTLY DUE TO DIFFERENCES BETWEEN YEARS, TRIM PACKAGES, OPTIONS, OR AFTERMARKET PARTS INSTALLED.

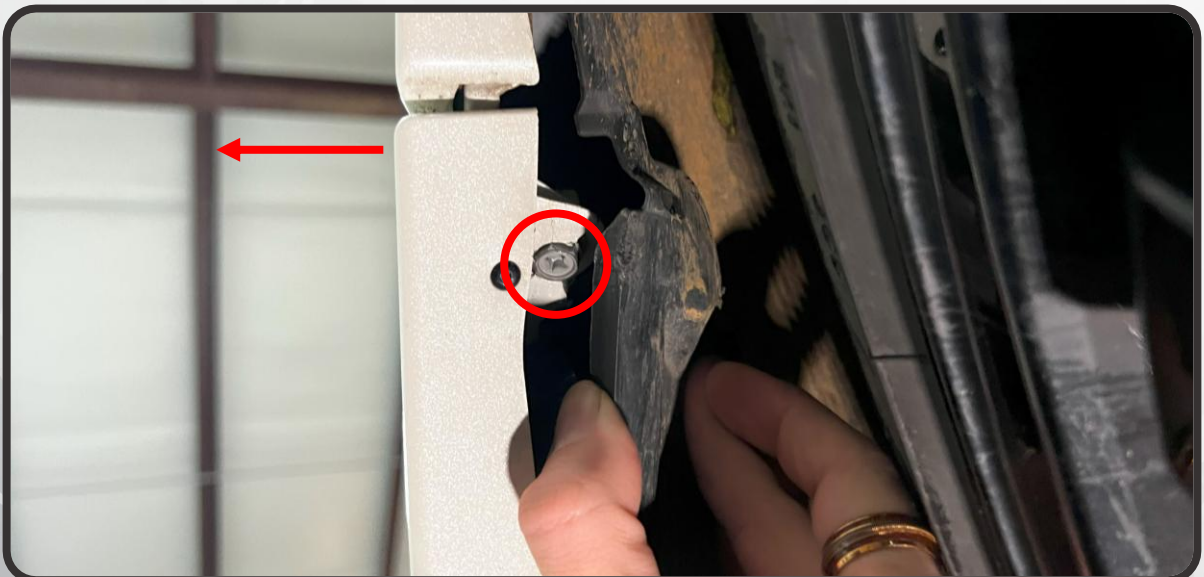
VEHICLE USED IN THIS GUIDE:

2014 NISSAN 370Z NISMO

1. RAISE THE HOOD OF THE CAR AND REMOVE THE SEVEN PLASTIC PUSH CLIPS THAT SECURE THE TOP EDGE OF THE BUMPER TO THE CAR



2. TURN THE WHEELS OF THE CAR TO THE SIDE. PULL BACK THE FENDER LINER AND REMOVE THE 10MM BOLT THAT SECURES THE BUMPER COVER TO THE FENDER. WITH THE BOLT REMOVED, PULL THE CORNER OF THE BUMPER COVER OUT, AWAY FROM THE CAR. REPEAT THIS STEP ON THE OPPOSITE SIDE OF THE CAR



DISSASSEMBLY

- MOVING TO THE UNDERSIDE OF THE FRONT OF THE CAR, REMOVE THE EIGHT 10MM BOLTS



- PULL THE FRONT BUMPER COVER FORWARD, JUST OFF OF THE CAR



DISSASSEMBLY

- IF EQUIPPED WITH FACTORY BUMPER DAYTIME RUNNING LIGHTS, UNCLIP THE HARNESS AND DISCONNECT THE PLUG ON EITHER SIDE



- SET THE BUMPER COVER ASIDE
- REMOVE THE SIX PLASTIC PUSH CLIPS FROM THE RADIATOR COVER AND SET THE PANEL ASIDE (AFTERMARKET PANEL SHOWN)

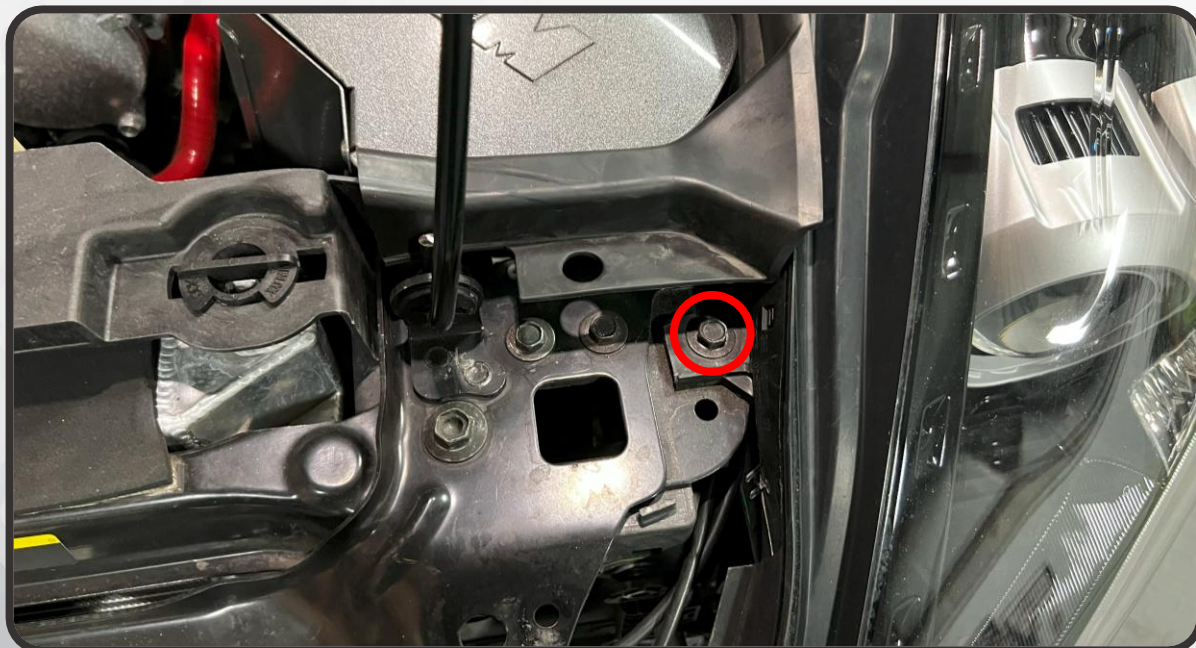


DISSASSEMBLY

8. REMOVE THE PLASTIC PUSH CLIP FROM THE RUBBER STRIP ON THE HEADLIGHT. THEN, FLEX THE RUBBER BACK FROM THE TOP OF THE HEADLIGHT AND REMOVE THE TWO PUSH CLIPS AND ONE 10MM BOLT

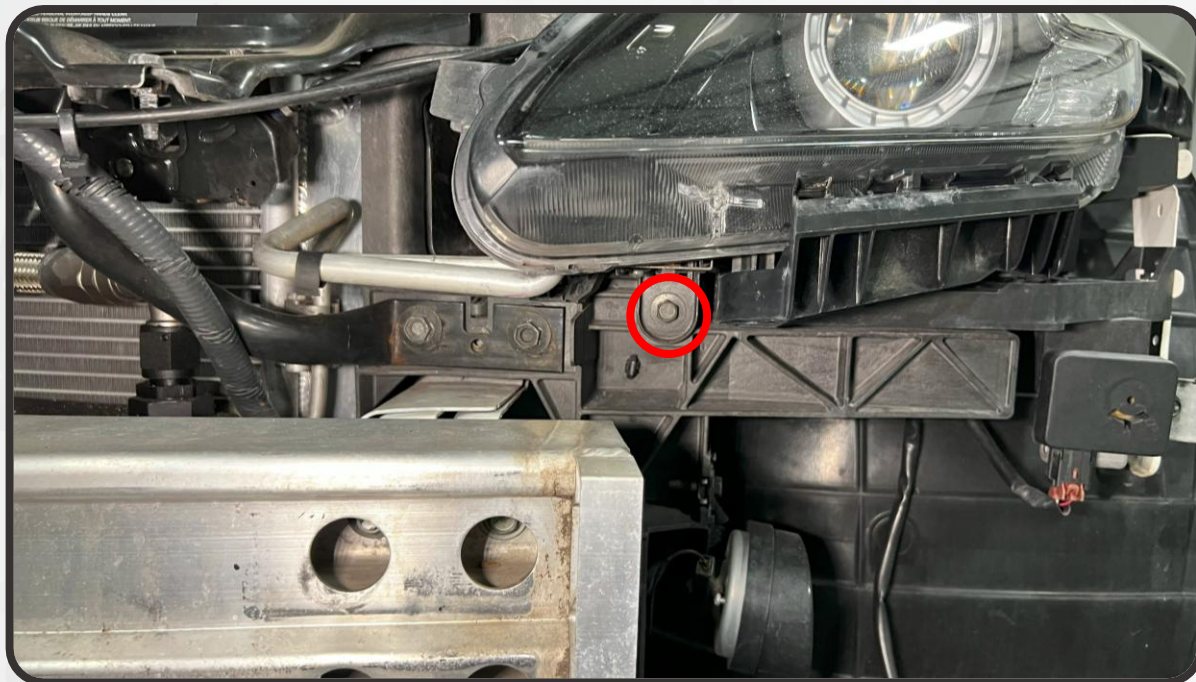


9. REMOVE THE ONE 10MM BOLT FROM THE SIDE OF THE HEADLIGHT



DISSASSEMBLY

10. REMOVE THE ONE 10MM BOLT FROM UNDERNEATH THE ASSEMBLY

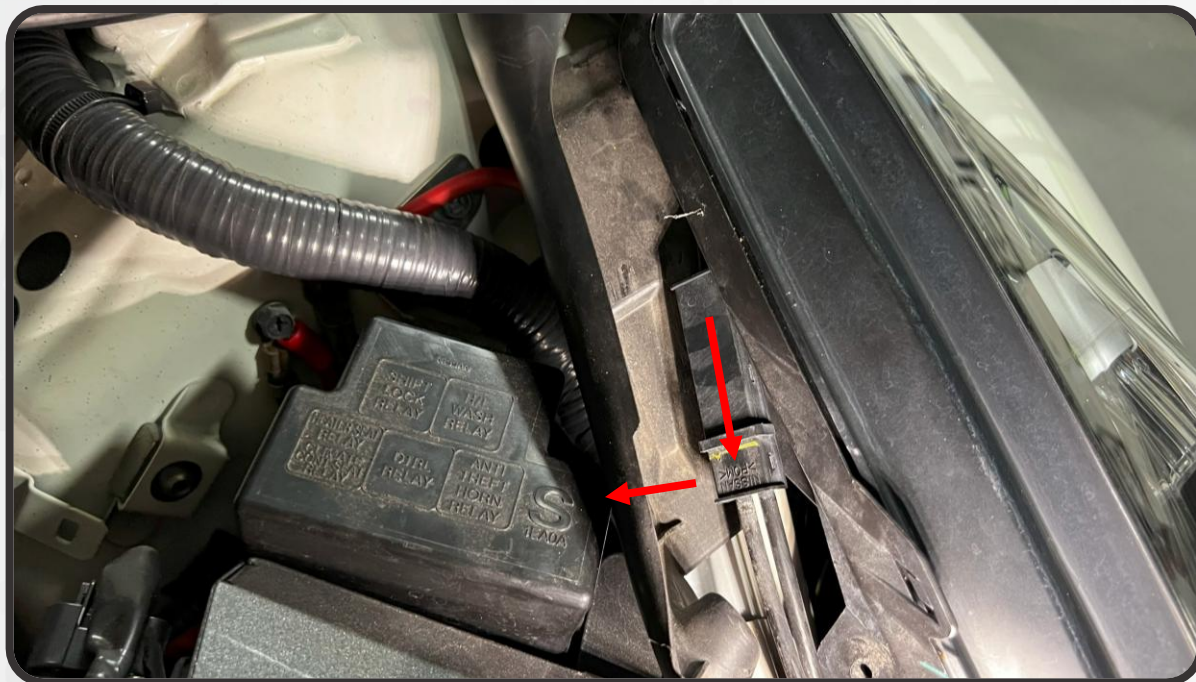


11. REMOVE THE 10MM BOLT FROM THE SIDE OF THE HEADLIGHT ASSEMBLY NEXT TO THE BUMPER COVER BRACKET



DISSASSEMBLY

12. (DRIVER-SIDE ONLY) PULL THE HOOD RELEASE CABLES FORWARD AND AWAY FROM THE HEADLIGHT HOUSING

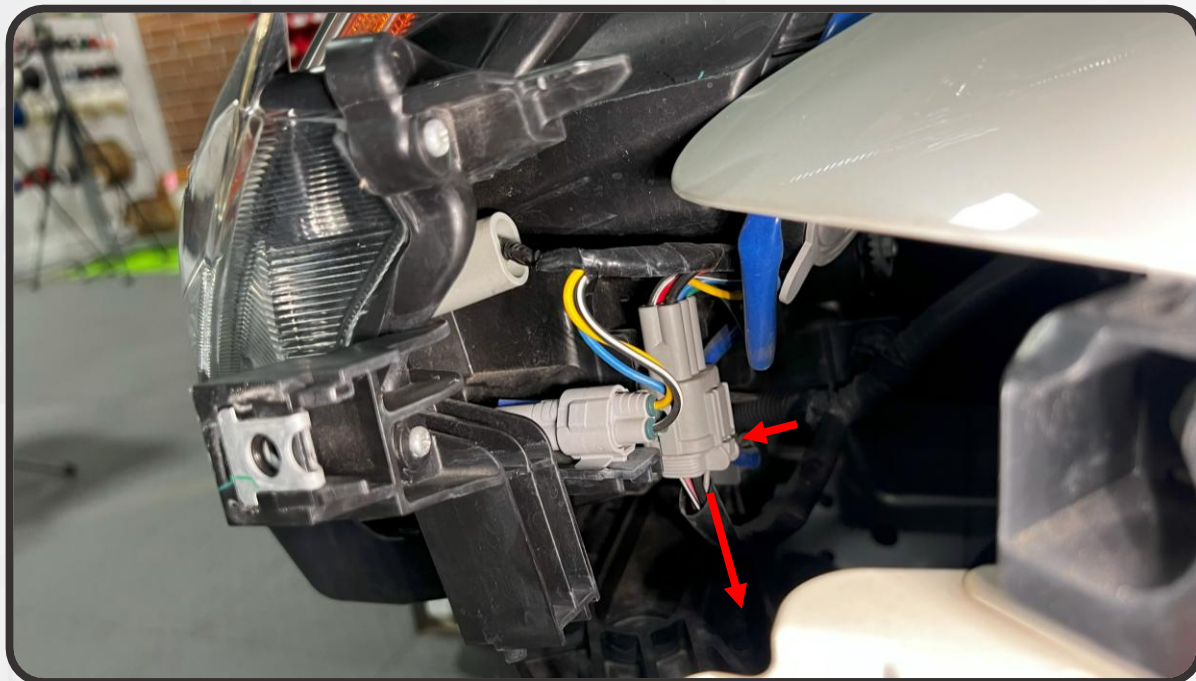


13. PULL THE HEADLIGHT ASSEMBLY FORWARD AND THEN UP TO RELEASE THE HEADLIGHT FROM THE VEHICLE. PULL THE LIGHT OFF OF THE VEHICLE UNTIL YOU CAN ACCESS THE HEADLIGHT CONNECTOR



DISSASSEMBLY

14. DISCONNECT THE VEHICLE HARNESS FROM THE BACK OF THE HEADLIGHT BY DEPRESSING THE TAB ON THE CONNECTOR AND SIMULTANEOUSLY PULLING DOWN ON THE VEHICLE-SIDE CONNECTOR



15. PULL THE HEADLIGHT ASSEMBLY FORWARD, OFF OF THE CAR, AND SET IT ASIDE
16. REPEAT STEPS 8-15 ON THE OPPOSITE SIDE

HEADLIGHT SETUP

17. PLACE THE FACTORY HEADLIGHT FACE DOWN (PREFERABLY ON A PADDED SURFACE SUCH AS A WORK MAT OR TOWEL TO PREVENT DAMAGING THE LENS) AND REMOVE THE FIVE PHILLIPS HEAD SCREWS TO REMOVE THE TWO BRACKETS FROM THE BOTTOM OF THE HEADLIGHT



18. USING THE ORIGINAL HARDWARE, INSTALL BOTH BRACKETS ONTO THE NEW MORIMOTO HEADLIGHT ASSEMBLY. TIGHTEN THE SCREWS ONLY TO HAND-TIGHT



19. REPEAT STEPS 17 AND 18 WITH THE OPPOSITE-SIDE HEADLIGHT ASSEMBLY

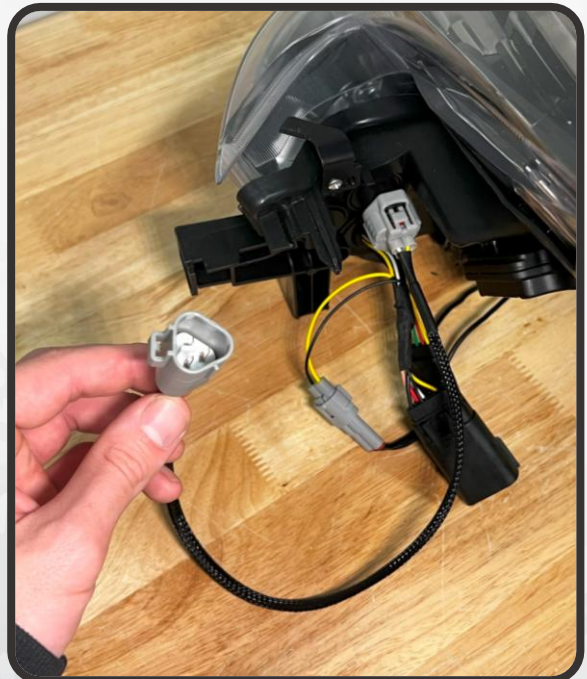


HEADLIGHT SETUP

20. WITH THE MORIMOTO XB MODE SELECTOR KEYS, YOU CAN DECIDE WHAT STYLE YOU'D LIKE FOR YOUR DAYTIME RUNNING LIGHT AND TURN SIGNAL. CHOOSE FROM THE COLORCODED KEYS SHOWN BELOW FOR YOUR DESIRED STYLE (NOT APPLICABLE ON XB EVO HYBRID HEADLIGHTS)

			
<ul style="list-style-type: none">• DRL: WHITE• TURN SIGNAL: FADE-OFF	<ul style="list-style-type: none">• DRL: WHITE• TURN SIGNAL: SEQUENTIAL	<ul style="list-style-type: none">• DRL: AMBER• TURN SIGNAL: FADE-OFF	<ul style="list-style-type: none">• DRL: AMBER• TURN SIGNAL: SEQUENTIAL

21. INSTALL THE MODE SELECTOR FOR YOUR PREFERRED MODE ONTO THE 3-PIN CONNECTOR ON THE BACK OF EACH HEADLIGHT. THIS CAN ALWAYS BE CHANGED AFTER INSTALL IF DESIRED. MAKE SURE THE VEHICLE AND HEADLIGHTS ARE OFF WHEN CHANGING MODE SELECTORS. IF YOU DO PLAN TO CHANGE MODE SELECTOR KEYS LATER, AND WOULD LIKE TO MAKE THE CONNECTOR EASIER TO ACCESS AFTER INSTALL, CONNECT THE INCLUDED EXTENSION HARNESS WHICH CAN BE ROUTED TO THE ENGINE BAY DURING INSTALL



WIRING

22. REMOVE THE BATTERY COVER. REMOVE THE FOUR PLASTIC PUSH-CLIPS AND REMOVE THE PLASTIC PANEL

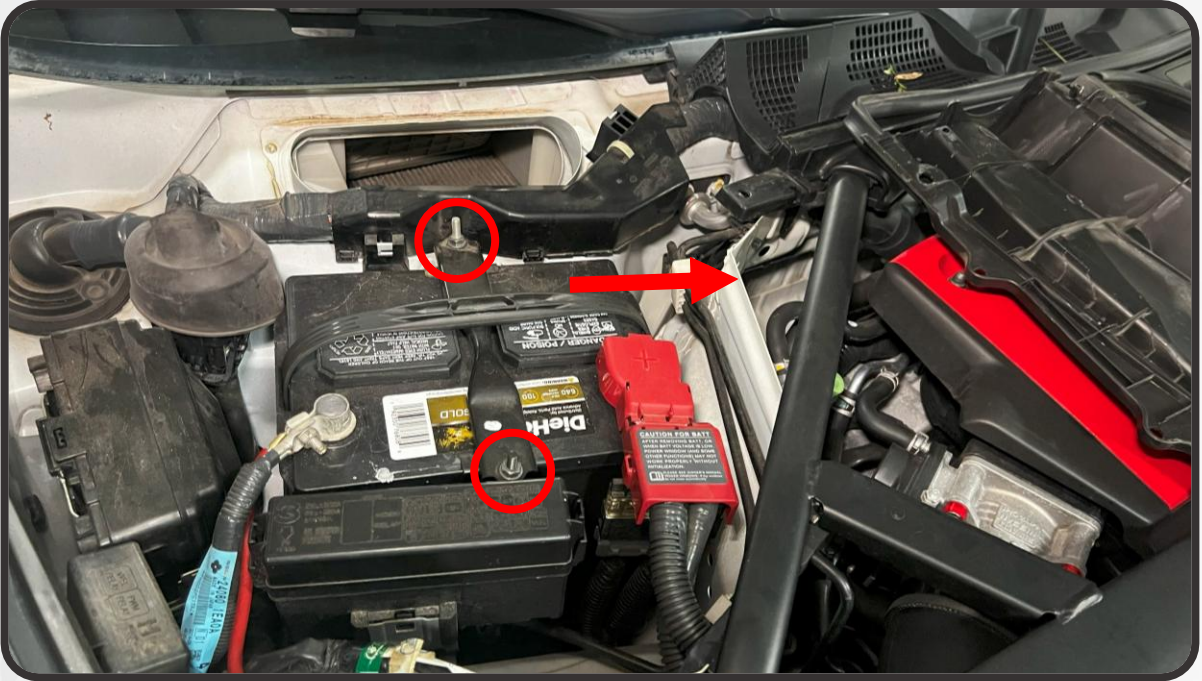


23. REMOVE THE TWO PLASTIC PUSH-CLIPS ON THE COWL. REMOVE THE COWL BY PULLING IT FORWARD TOWARDS THE FRONT OF THE CAR, THEN SWINGING IT UP AND OVER TO THE SIDE



WIRING

24. LOOSEN THE TWO 10MM BOLTS ON YOUR BATTERY HOLD DOWN, AND THEN SLIDE THE BATTERY TOWARDS THE ENGINE AS MUCH AS YOU CAN



25. ACCESS THE FUSE BOX BY PRESSING THE TWO TABS ON THE TOP OF THE BOX FORWARD, AND SLIDING THE FUSE BOX UP. IF YOUR FUSE BOX DOES NOT WANT TO COME ALL OF THE WAY OUT, REACH DOWN AND ADJUST THE WIRES THAT COME OUT OF THE BOTTOM OF THE FUSE BOX

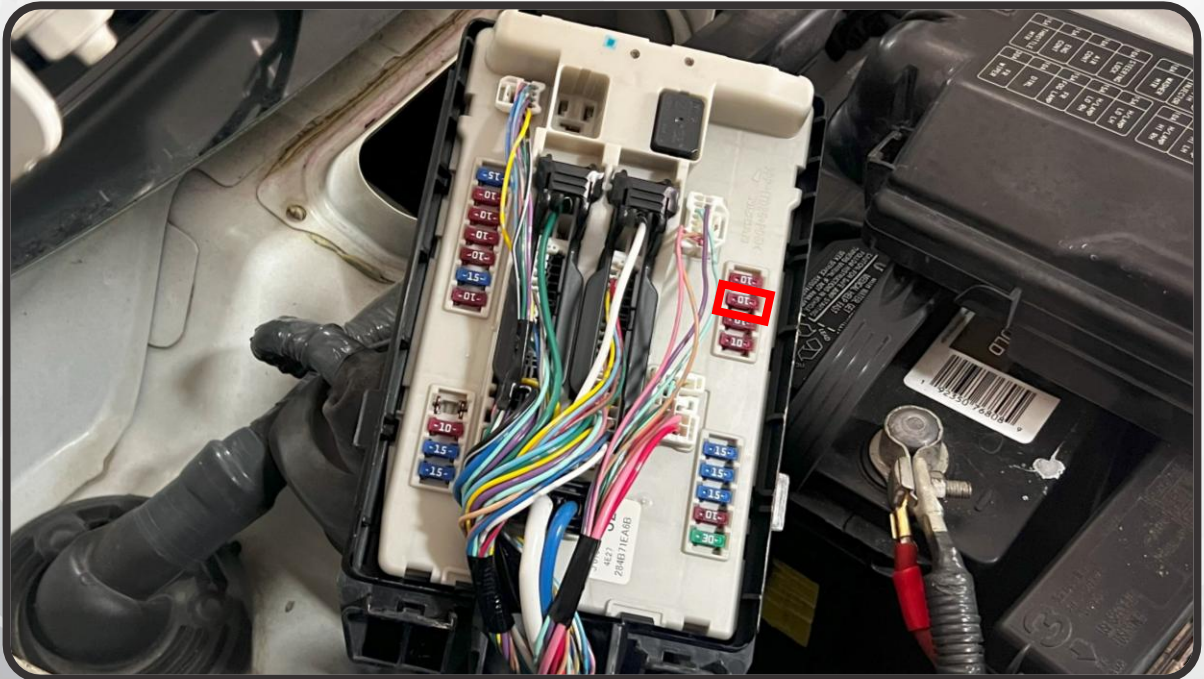


WIRING

26. WITH THE FUSE BOX PULLED OUT, PRESS THE TWO TABS ON THE BOTTOM TO OPEN THE FUSE BOX LID

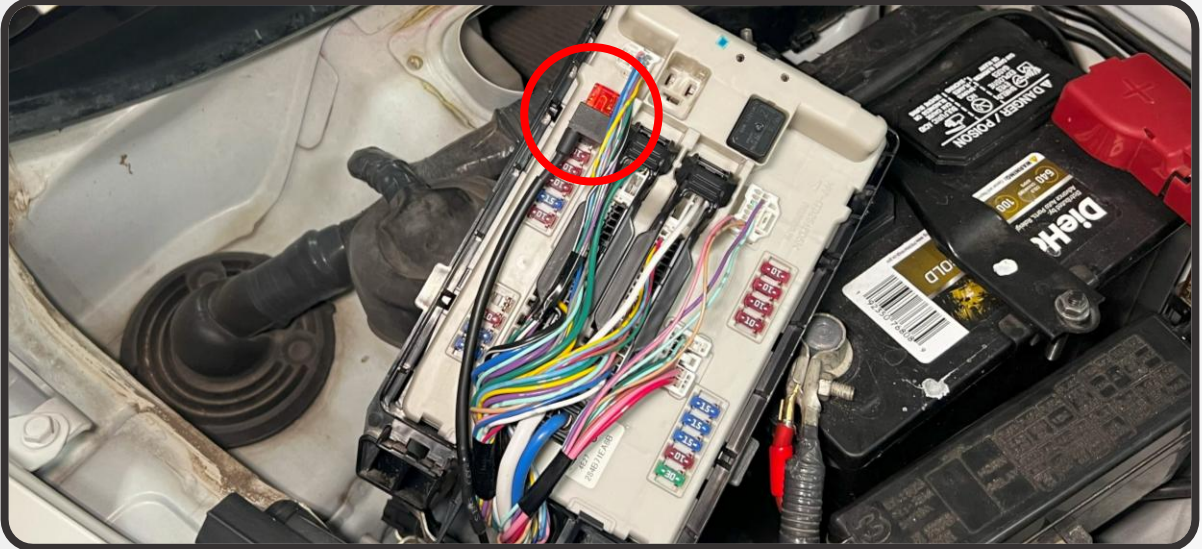


27. LOCATE THE #13 10A TAIL LIGHT FUSE AND REMOVE IT



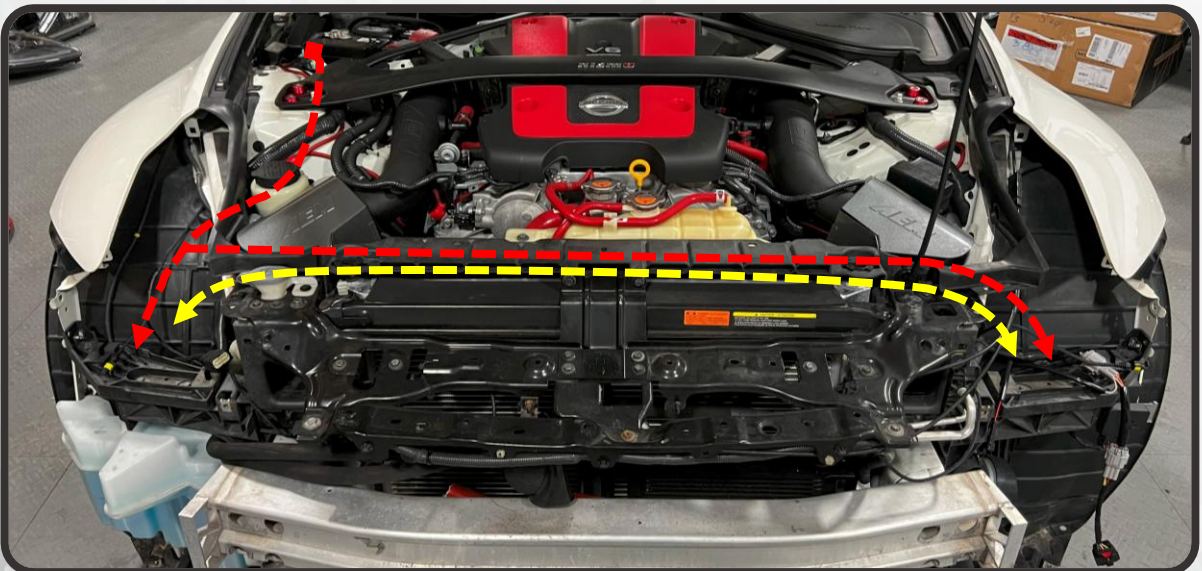
WIRING

28. INSERT THE PROVIDED FUSE TAP INTO THE TAIL LIGHT FUSE SLOT AS SHOWN. ROUTE THE DRL HARNESS OUT OF THE BOTTOM OF THE FUSE BOX NEXT TO THE FACTORY WIRING AND REPLACE THE LID. CONNECT THE LONG END OF THE DRL HARNESS TO THE FUSE TAP



29. REINSTALL THE FUSE BOX AND RESECURE THE BATTERY

30. ROUTE THE DRL HARNESS (SHOWN RED) FORWARD TO THE PASSENGER-SIDE HEADLIGHT CAVITY, THEN ACROSS THE RADIATOR SUPPORT TO THE DRIVER-SIDE HEADLIGHT CAVITY. TAKE THIS TIME TO ALSO ROUTE THE RGB CROSSOVER HARNESS (SHOWN YELLOW) FROM ONE HEADLIGHT CAVITY TO THE OTHER, FOLLOWING ALONG THE SAME ROUTING AS THE DRL HARNESS (EXCL. HYBRID MODEL). MAKE SURE ALL WIRING IS SECURE AND CLEAR OF ANY HOT OR MOVING COMPONENTS



31. REINSTALL THE PLASTIC PANELS AROUND THE BATTERY/FUSE BOX

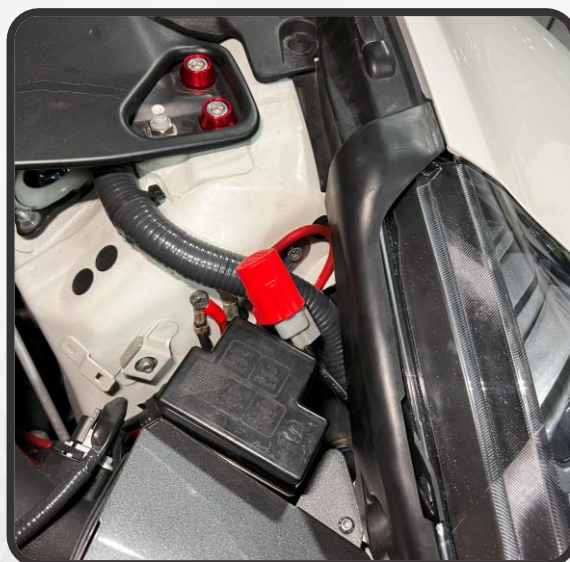


INSTALLATION

32. INSTALL THE INCLUDED HEADLIGHT ADAPTER HARNESSES ONTO BOTH OF THE FACTORY HEADLIGHT CONNECTORS



33. LIFT THE HEADLIGHT ASSEMBLY UP TO THE CAR. CONNECT THE HEADLIGHT ADAPTER HARNESS, FUSE TAP HARNESS, AND RGB CROSSOVER HARNESS (IF APPLICABLE, NOT USED ON HYBRID MODEL) TO THE HEADLIGHT ASSEMBLY. WITH ALL CONNECTIONS MADE, FIT THE HEADLIGHT INTO THE HEADLIGHT CAVITY AND SECURE IT USING THE FACTORY HARDWARE. REPEAT THIS STEP ON THE OPPOSITE SIDE. IF YOU INSTALLED THE MODE SELECTOR EXTENSION, ROUTE IT UP TO THE ENGINE BAY AS SHOWN DURING INSTALL



34. WITH BOTH HEADLIGHTS INSTALLED, GET IN THE CAR AND CONFIRM THAT ALL FUNCTIONS ARE WORKING PROPERLY
35. REASSEMBLE THE FRONT OF THE CAR IN THE REVERSE ORDER OF DISASSEMBLY

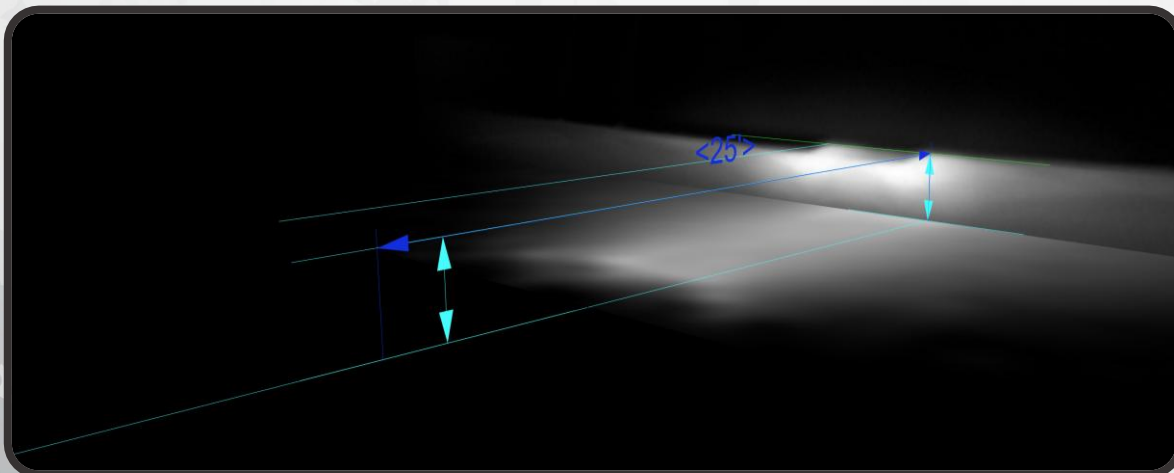


AIMING

36. THE HEADLIGHTS COME OUT OF THE BOX AIMED FOR STOCK RIDE HEIGHT, HOWEVER IT IS RECOMMENDED TO FINE TUNE THE AIM OF YOUR LOW BEAM AFTER INSTALLATION REGARDLESS. USING A LONG PHILLIPS HEAD SCREWDRIVER DOWN THE BACK OF THE HEADLIGHT TO THE ADJUSTER GEAR, FOLLOW THE INSTRUCTIONS BELOW TO PROPERLY ALIGN YOUR HEADLIGHTS' LOW BEAM CUTOFF (THE UPPER HORIZONTAL EDGE OF THE LOW BEAM)

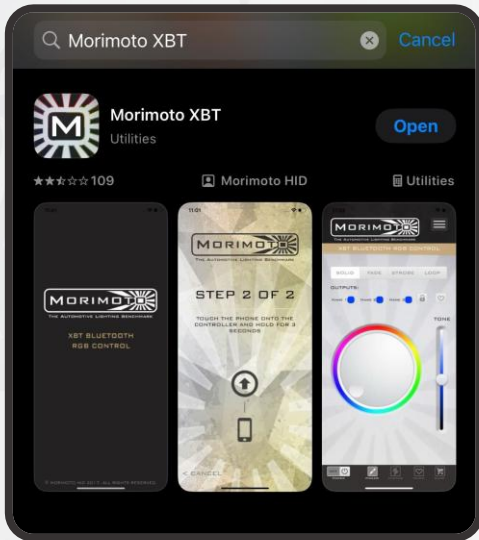


37. WITH THE VEHICLE PARKED ON LEVEL GROUND, 25' FROM A WALL, MEASURE THE DISTANCE FROM THE GROUND TO THE HEADLIGHT'S OPTICAL CENTER (CIRCULAR MARKING ON THE LENS IN FRONT OF THE MIDDLE PROJECTOR)
- IF THE DISTANCE FROM THE GROUND TO THE OPTICAL CENTER IS LESS THAN 34.5", ADJUST THE TOP OF THE HEADLIGHT CUTOFF TO THE SAME HEIGHT AS THE HEADLIGHT MEASUREMENT YOU TOOK. FACTORY RIDE HEIGHT TYPICALLY FALLS IN THIS RANGE AT APPROXIMATELY 28"
 - IF THE HEIGHT IS BETWEEN 35"-39", ADJUST THE CUTOFF TO 2" BELOW YOUR HEADLIGHT MEASUREMENT
 - IF THE HEIGHT IS GREATER THAN 39.5", ADJUST THE CUTOFF TO 3" BELOW YOUR HEADLIGHT MEASUREMENT

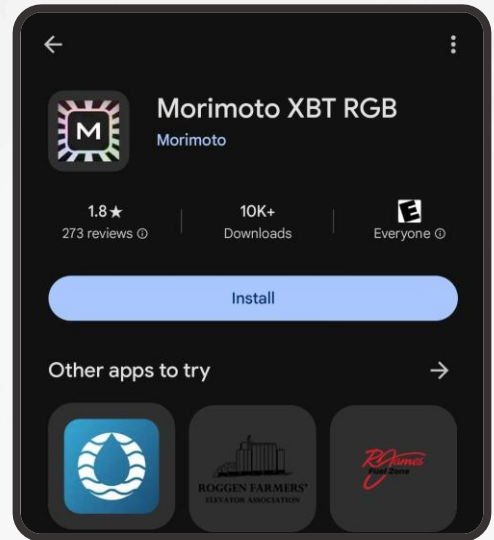


RGB CONTROLLER OPERATION

38. THE RGB DAYTIME RUNNING LIGHT IS CONTROLLED VIA AN APP ON YOUR SMARTPHONE. DOWNLOAD THE FREE MORIMOTO XBT APP TO GET STARTED

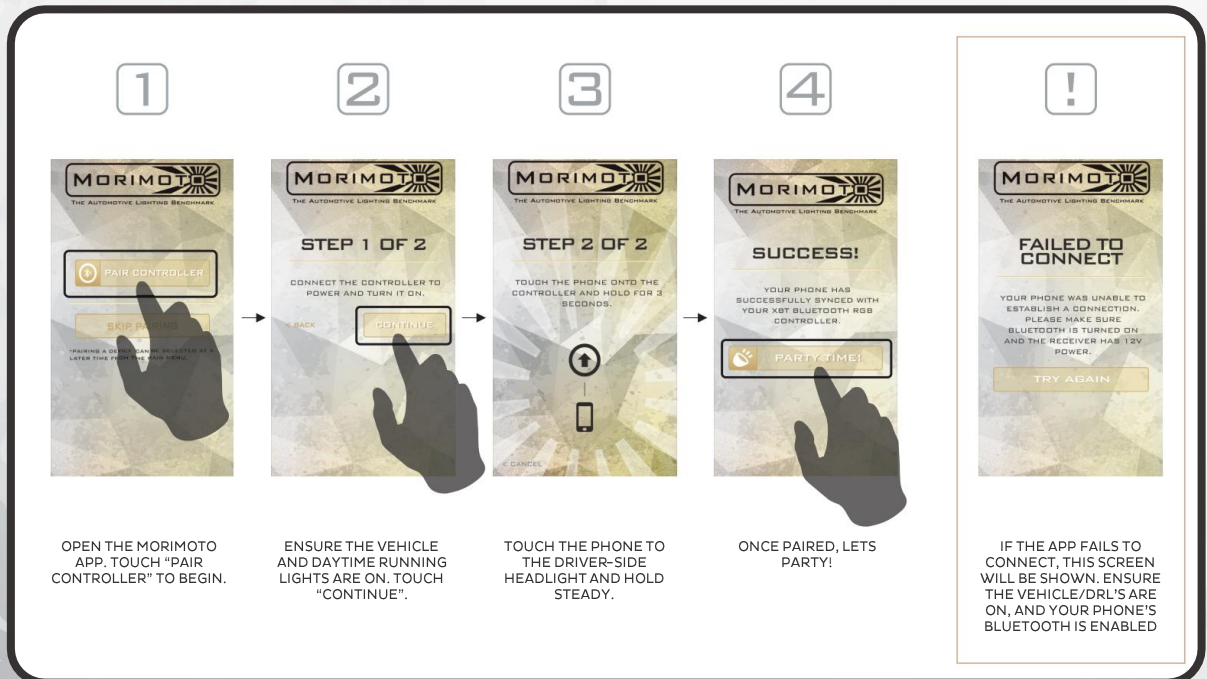


iOS



ANDROID

39. OPEN THE APP AND FOLLOW THE PROMPTS ON THE SCREEN TO PAIR YOUR PHONE TO THE HEADLIGHTS



RGB CONTROLLER OPERATION

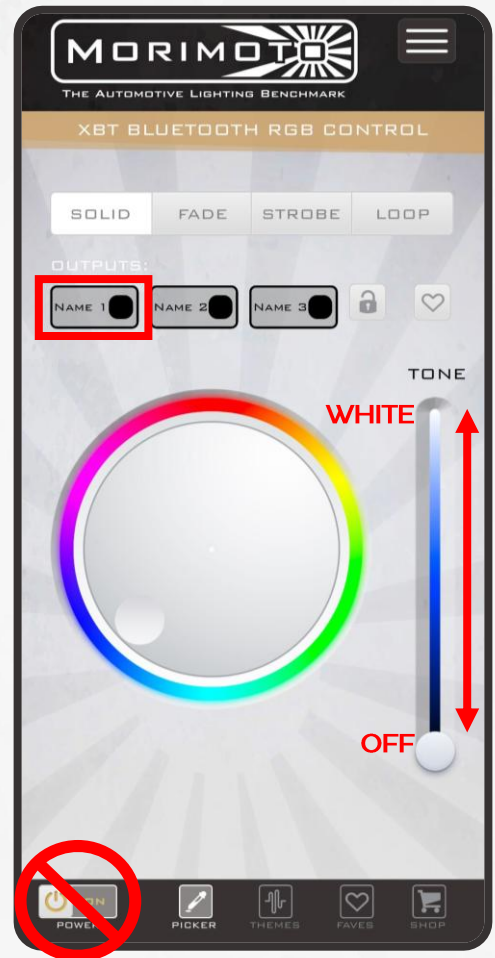
FUNCTION NOTES

MAKE SURE YOUR APP IS SET TO "OUTPUT 1"

TO SWITCH YOUR DAYTIME RUNNING LIGHT TO WHITE, SIMPLY SLIDE THE TONE BAR ON THE RIGHTHAND SIDE OF THE SCREEN ALL THE WAY TO THE TOP

DO NOT USE THE ON/OFF TOGGLE IN THE BOTTOM LEFT TO TURN OFF THE DAYTIME RUNNING LIGHT AS THIS WILL TURN OFF THE CONTROLLER ENTIRELY. VEHICLE IGNITION WILL NEED TO BE CYCLED OFF AND BACK ON TO POWER THE CONTROLLER ON AGAIN. IF YOU WOULD LIKE TO TURN THE DAYTIME RUNNING LIGHT STRIP OFF, SLIDE THE TONE BAR ON THE RIGHTHAND SIDE OF THE SCREEN ALL THE WAY TO THE BOTTOM

THE CONTROLLER IS DESIGNED SO THAT WHEN THE VEHICLE IS TURNED ON, THE DAYTIME RUNNING LIGHT WILL DEFAULT TO THE COLOR IT WAS LAST SET TO



XB EVO HEADLIGHTS: NISSAN 370Z (09-21)



- ENJOY YOUR NEW MORIMOTO XB EVO HEADLIGHTS! -

