



KRYPTONITE 'HEX-LINK' STYLE END LINK INSTALLATION INSTRUCTIONS

*****NOTE***** These end links may appear adjustable, they are designed to be a fixed length end link. This design allows us to change the length of the body (center section) to accommodate varying lift heights.

1. Loosen the jam nuts entirely. From here, you will run the joints all the way into the body until they bottom out on the loosened jam nuts. (Do this on all four joints) You will then torque the jam nuts to **55 lb-ft** using 22mm wrenches.
2. You will now remove the old end link from the vehicle to install your new link. If the stud is wanting to rotate with the nut, use the 8mm wrench flat to secure the stud. Repeat this process on the other side.

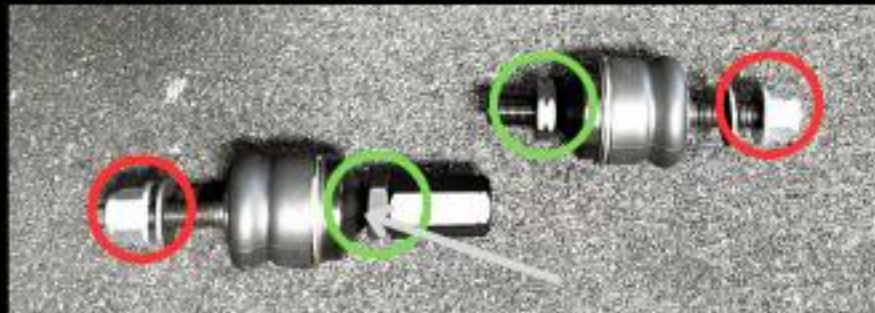
Torque specifications on the reverse side of this card



Various models of these links



Register your
parts here



Ensure the ends are fully seated into the link body

 Nylock Fastener 60 lb-ft  Jam Nuts - 55 lb-ft

 **FOLLOW US**
@kryptoniteproducts

KRYPTONITEPRODUCTS.COM