

ROUGH COUNTRY

HONDA PIONEER 1000-5 FORMED ROOF

Thank you for choosing Rough Country for all your vehicle needs.

Please read instructions before beginning installation. Check the kit hardware against the kit contents shown below. Be sure you have all needed parts and know where they go.

If questions exist, please call us @1-800-222-7023. We will be happy to answer any questions concerning this product. Check all fasteners for proper torque. Check to ensure adequate clearance between all components. Periodically check all hardware for tightness.

Kit Contents:

1-Front Roof
1-Rear Roof
60"-Two Sided Tape

Tools Needed:

4mm Allen Wrench
5mm Allen Wrench
10mm Socket
13mm socket
Cutting Blade
Drill Motor
5/16 bit

Hardware Included:

13-8mm x 25mm Button Head
13-Flat Washer
13-8mm Lock Nut
8-6mm x 20mm Button Head
8-6mm Flat Washer
8-6mm Lock Nut
13-P-Clamps



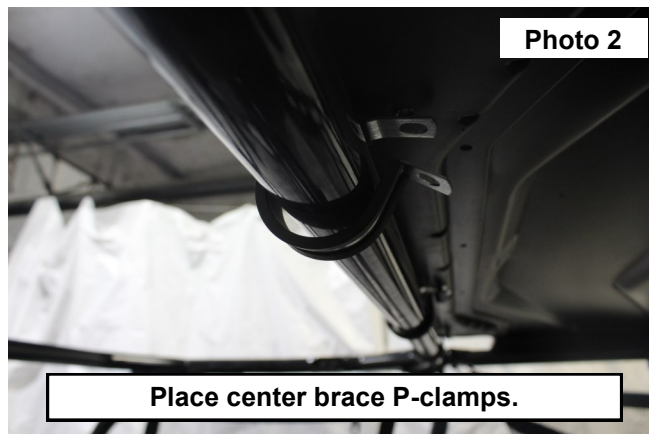
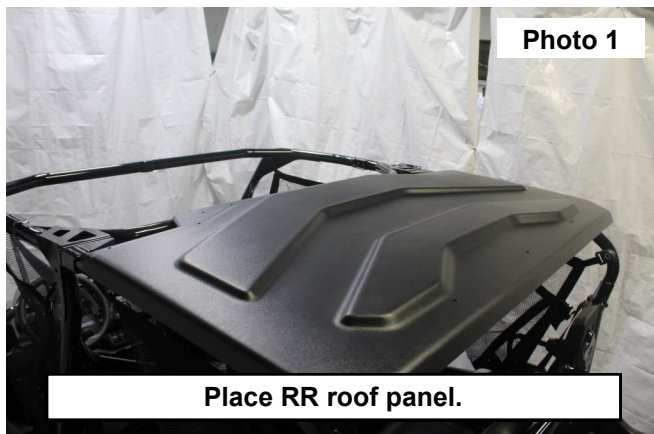
Torque Specs:

Size	Grade 5	Grade 8	Size	Class 8.8	Class 10.9
5/16"	15 ft/lbs	20ft/lbs	6MM	5ft/lbs	9ft/lbs
3/8"	30 ft/lbs	35ft/lbs	8MM	18ft/lbs	23ft/lbs
7/16"	45 ft/lbs	60ft/lbs	10MM	32ft/lbs	45ft/lbs
1/2"	65 ft/lbs	90ft/lbs	12MM	55ft/lbs	75ft/lbs
9/16"	95 ft/lbs	130ft/lbs	14MM	85ft/lbs	120ft/lbs
5/8"	135ft/lbs	175ft/lbs	16MM	130ft/lbs	165ft/lbs
3/4"	185ft/lbs	280ft/lbs	18MM	170ft/lbs	240ft/lbs

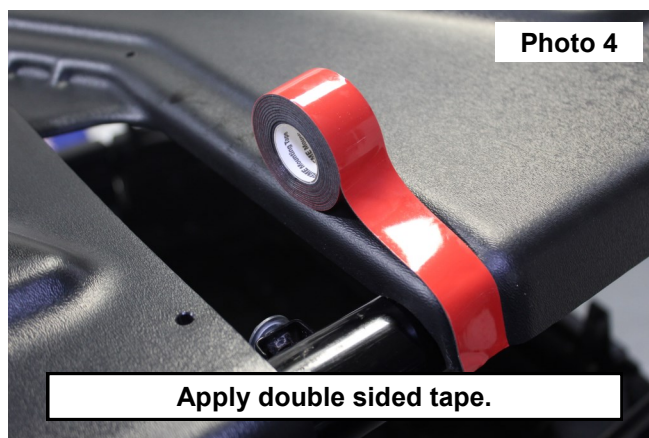
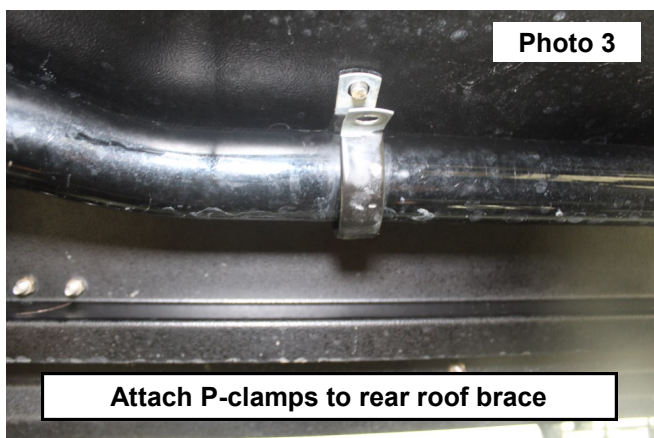


INSTALLATION INSTRUCTIONS

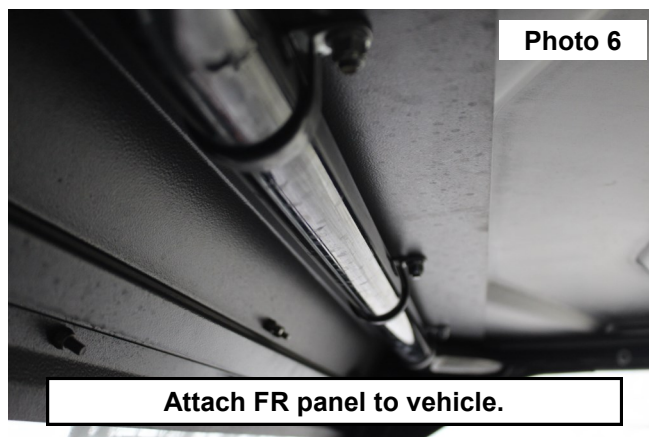
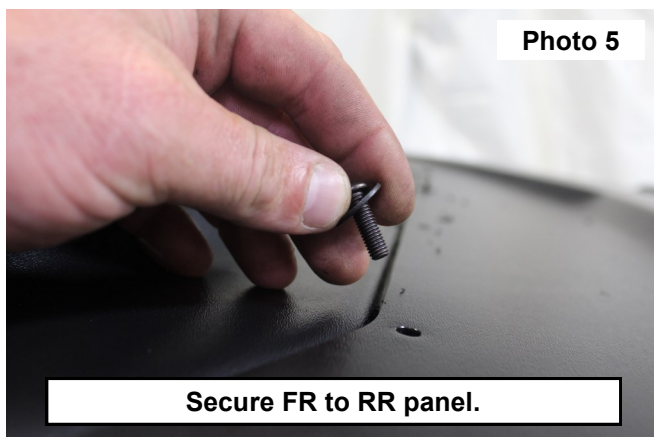
1. Place the RR roof panel on the vehicle. **Note: Place (3) P-clamps on the center brace of vehicle prior to placing the roof panel. Bolt holes facing the rear of vehicle. See Photo 1 and Photo 2.**



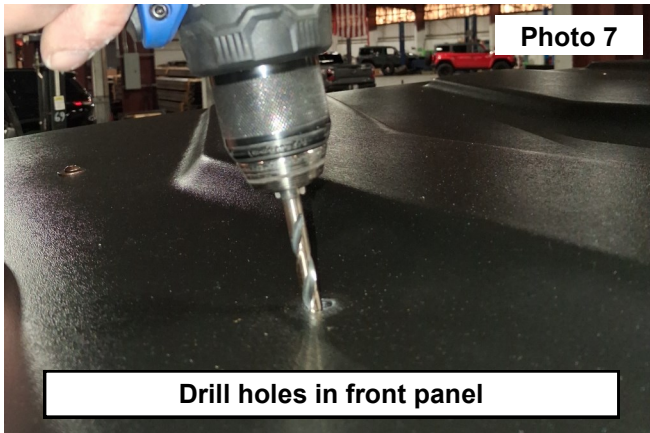
2. Loosely attach the RR panel using (3 ea.) P-clamps, 8mm x 25mm button head bolt, 8mm flat washer, and 8mm lock nut. **See Photo 3.**
3. Install double sided tape along groove on RR panel. **See Photo 4.**



4. Using help, place the front panel on the vehicle making sure to overlap the double sided tape. **NOTE: You will need to cut slits in the tape to fit bolts.** Secure FR panel to RR panel using (6ea.) 6mm button head bolt, 6mm flat washer, and 6mm lock nuts. Tighten using 4mm allen wrench and 10mm socket. **See Photo 5.**
5. **If vehicle is equipped with RC tilt windshield, skip to next step.** Place (3 ea.) P-clamps, 8mm x 25mm button head bolt, 8mm flat washer, and 8mm lock nut on the front brace of the vehicle. Using 5mm allen wrench and 13mm socket, tighten 8mm hardware on front and rear roof panel. **See Photo 6.**



6. **If vehicle is equipped with RC tilt windshield**, using a drill motor and 5/16 bit , using the filler bracket as a guide, drill hole in the center of roof to secure the 8mm hardware. **See Photo 7.**
7. Place (1 ea.) P-clamps, 8mm x 25mm button head bolt, 8mm flat washer, and 8mm lock nut on the front brace of the vehicle. Using 5mm allen wrench and 13mm socket, tighten 8mm hardware on front and rear roof panel. **See Photo 8.**



By purchasing any item sold by Rough Country, LLC, the buyer expressly warrants that he/she is in compliance with all applicable, State, and Local laws and regulations regarding the purchase, ownership, and use of the item. It shall be the buyer's responsibility to comply with all Federal, State and Local laws governing the sales of any items listed, illustrated or sold. The buyer expressly agrees to indemnify and hold harmless Rough Country, LLC for all claims resulting directly or indirectly from the purchase, ownership, or use of the items.

