



## 4121 – 2019-PRESENT, MERCEDES SPRINTER, GRAB HANDLE

Version 1.0

### General Notes

- For the most up to date and current instructions, please visit our website at [www.vancompass.com](http://www.vancompass.com)
- Please read all instructions thoroughly before starting installing Van Compass products.
- This is a bolt on grab handle and light mount that can be installed with simple hand tools.
- This can be completely removed and the OEM plastic cover can be re-installed.

### Parts List

#### **4121 – 2019-PRESENT, MERCEDES SPRINTER, GRAB HANDLE**

- (1) 412101-LH MERCEDES SPRINTER, GRAB HANDLE BASE, LEFT HAND
- (1) 412101-RH MERCEDES SPRINTER, GRAB HANDLE BASE, RIGHT HAND
- (2) 412102 BILLET GRAB HANDLE
- (4) HM6-1.0-15-10.9 M6-1.0 X 15MM LONG, HEX HEAD BOLT,
- (4) WF-M6 M6 FLAT WASHER
- (2) PP-PLUG-875 PANEL PLUG, .875" HOLE
- (2) ET-R-125 1/8" RUBBER EDGE TRIM, 4' length
- (6) PP-M08-14 PUSH PIN, FENDER CLIP

### Tools Needed

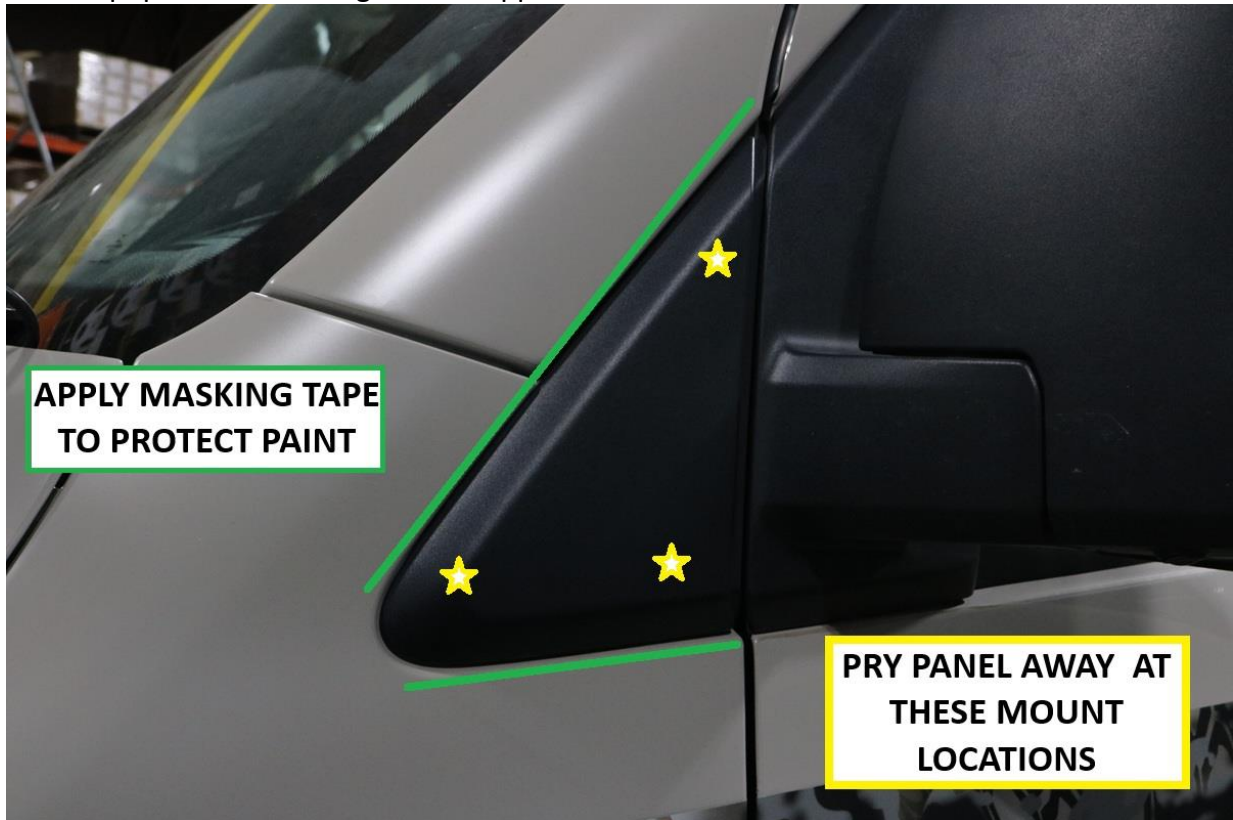
- Simple hand tools:
  - Torque Wrench.
  - Plastic trim pry bar
  - Basic wrench and socket set:
    - Metric Sizes:
      - 10mm, 13mm

### Approximate Installation Time

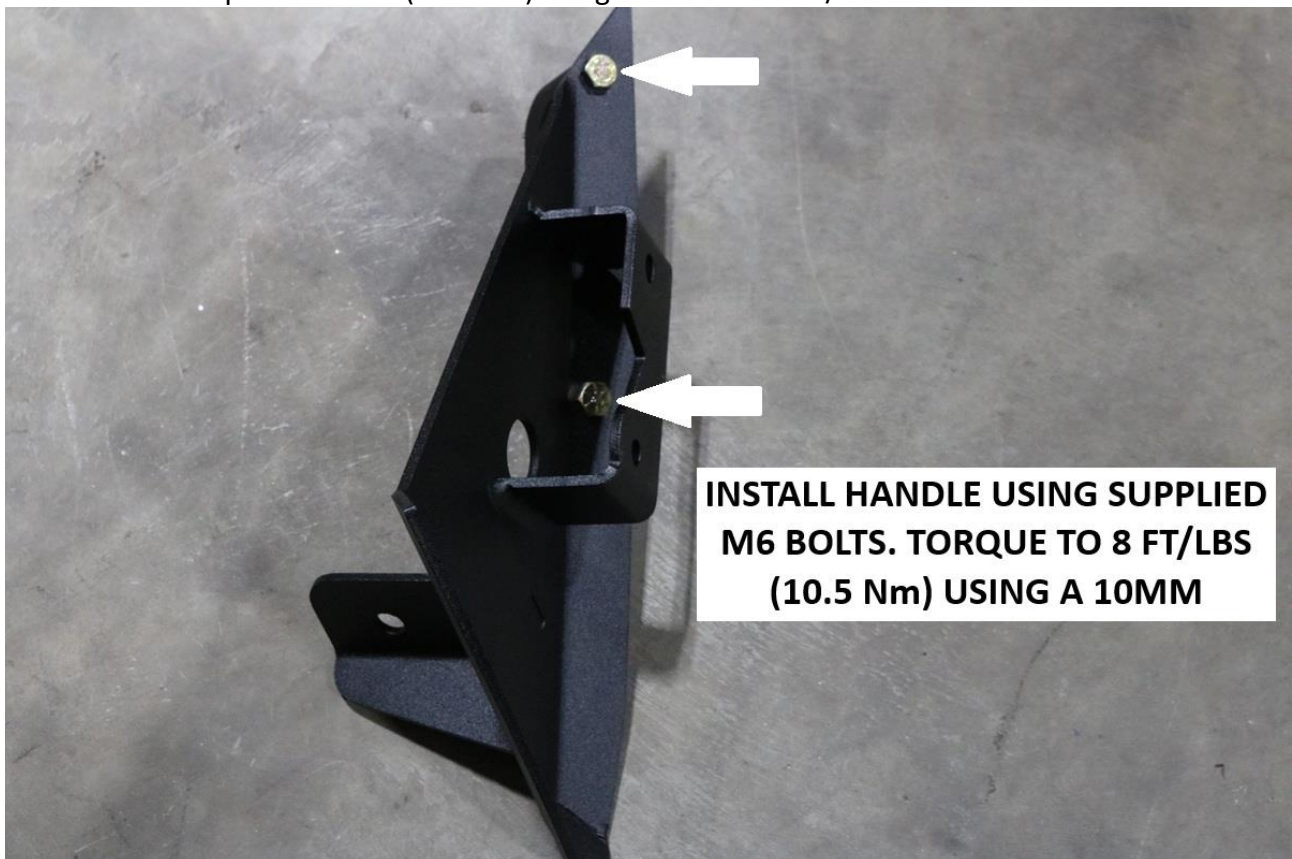
- 30 min – 1hr (Does not include wiring of auxiliary lights)

## Installation

1. Carefully remove the plastic cover by prying gently away from the body. There are 3 attachment points that will pop off when enough force is applied.



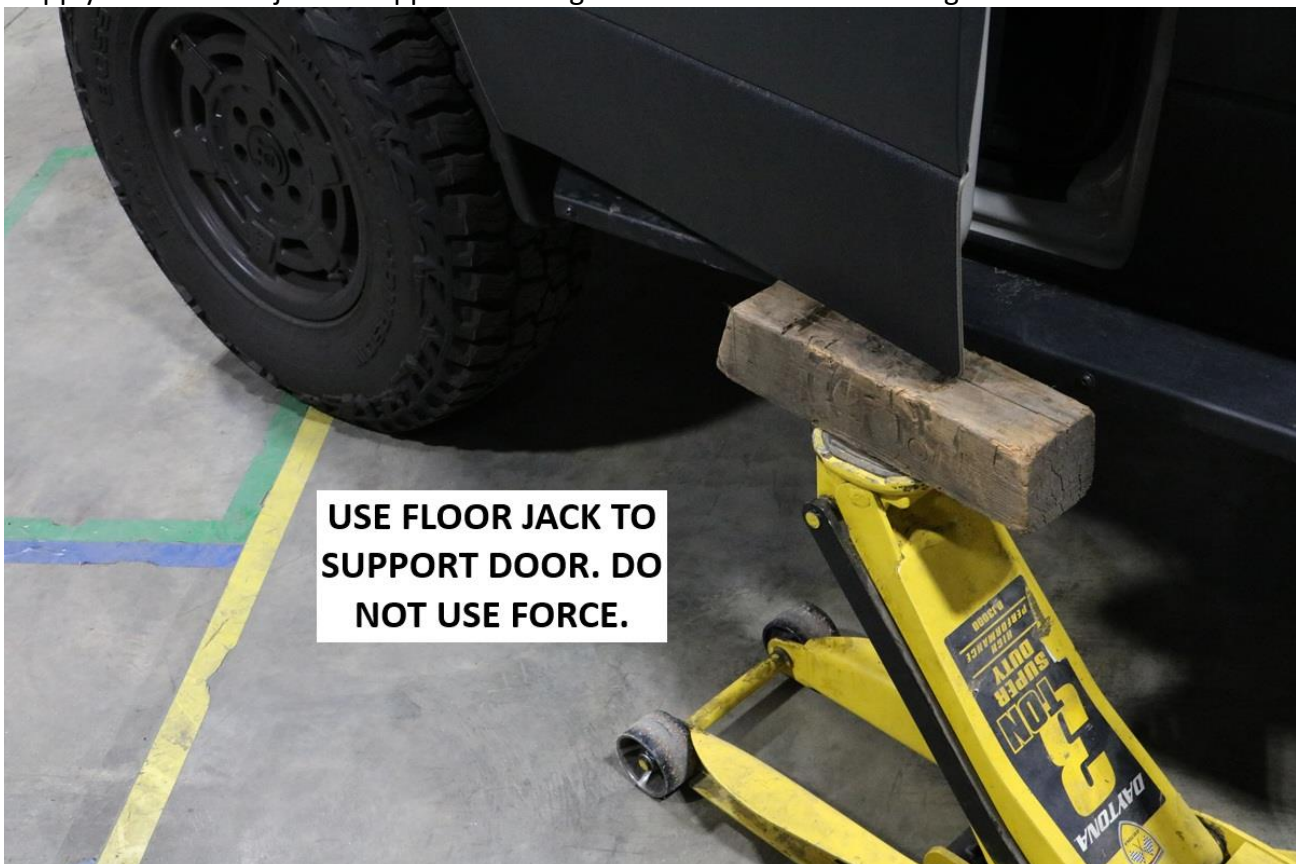
2. Mount the handle to the bracket using the supplied M6 hardware, be sure to use a washer under the bolt head. Torque to 8 ft-lbs (10.5 Nm) using a 10MM socket / wrench.



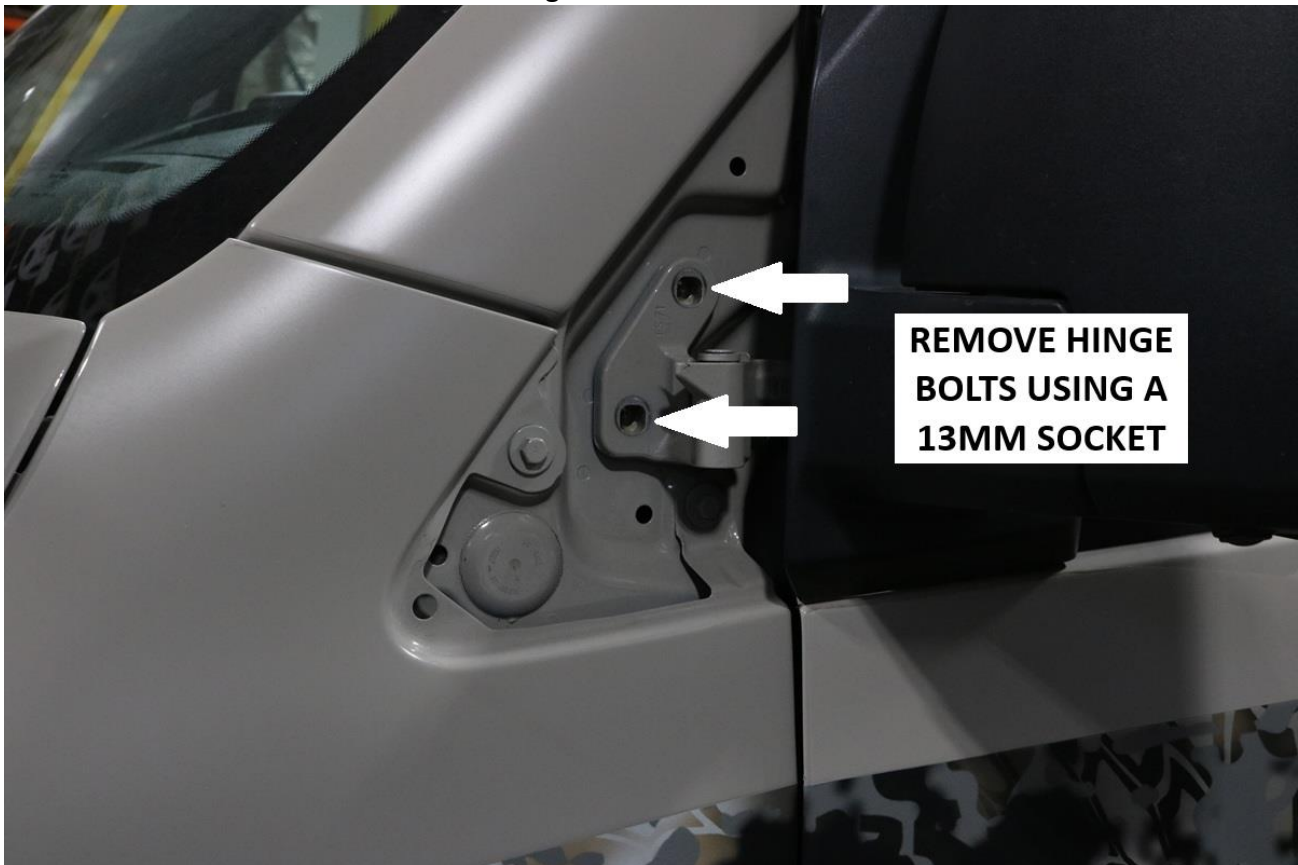
3. If edge trim is desired, apply the supplied edge trim around the edge of the bracket. Cut off excess trim.



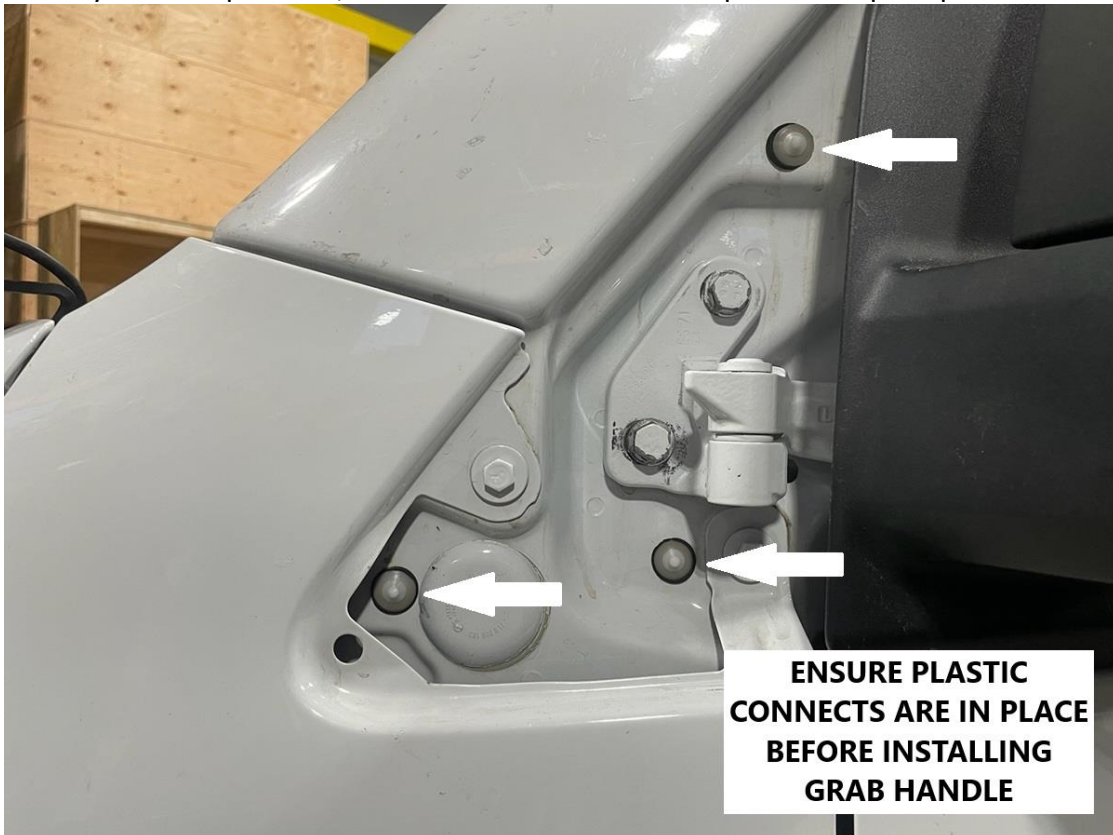
4. Open the door slightly. Use a floor jack with a wood block to lift slightly on the back of the door. Do not apply force. This is just to support the weight of the door when the hinge is unbolted.



5. Use a 13mm socket to remove the 2 hinge bolts.



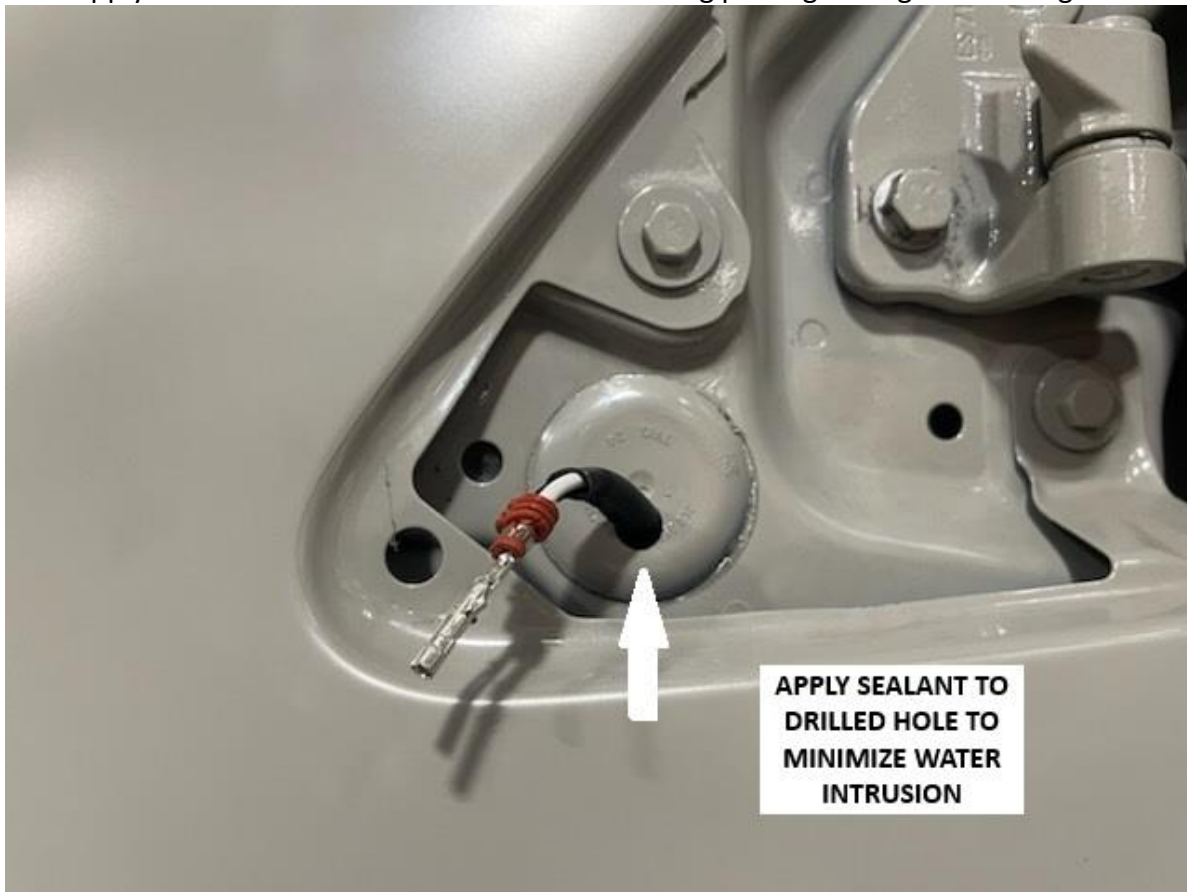
6. Ensure the OEM plastic clips are in place before installing grab handle. This is necessary for waterproofing.
- If any of the clips broke, install one of the included replacement push pins.



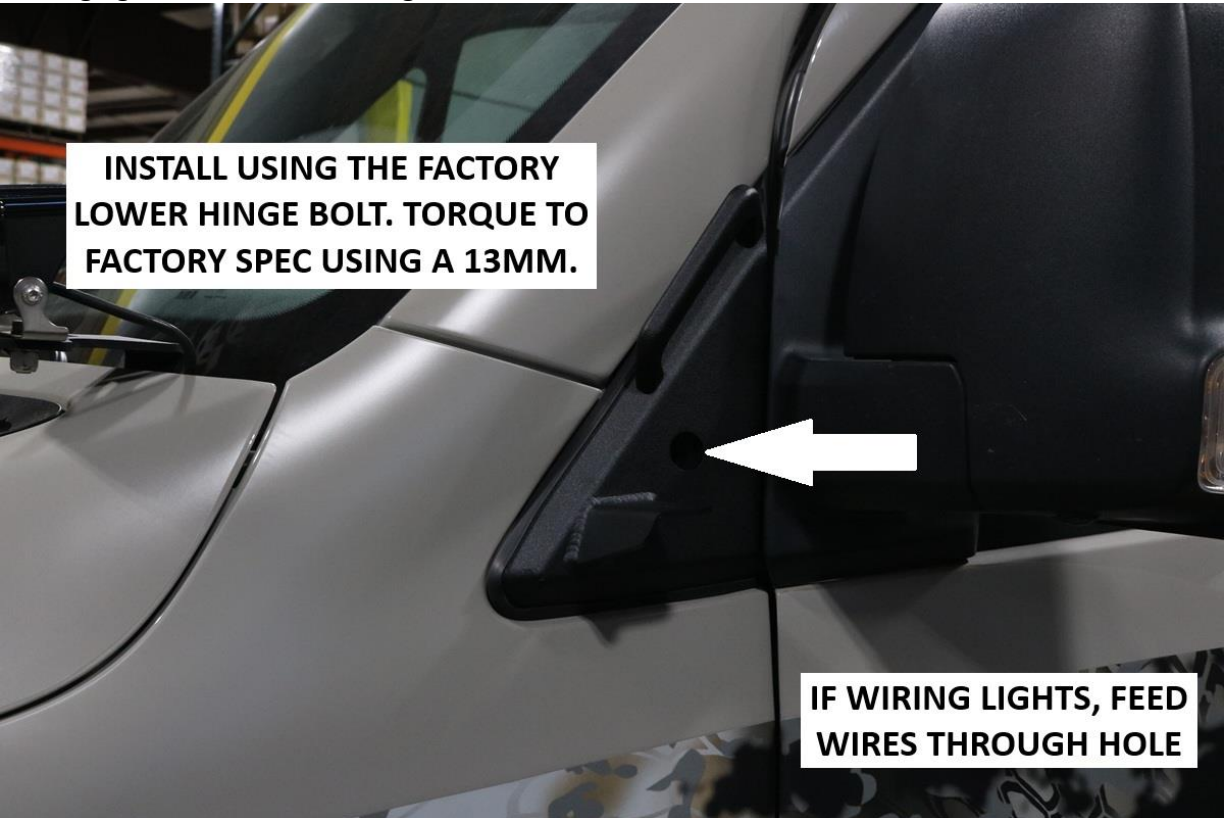
7. If wiring lights, remove the large body grommet as shown below and route wires through hole.



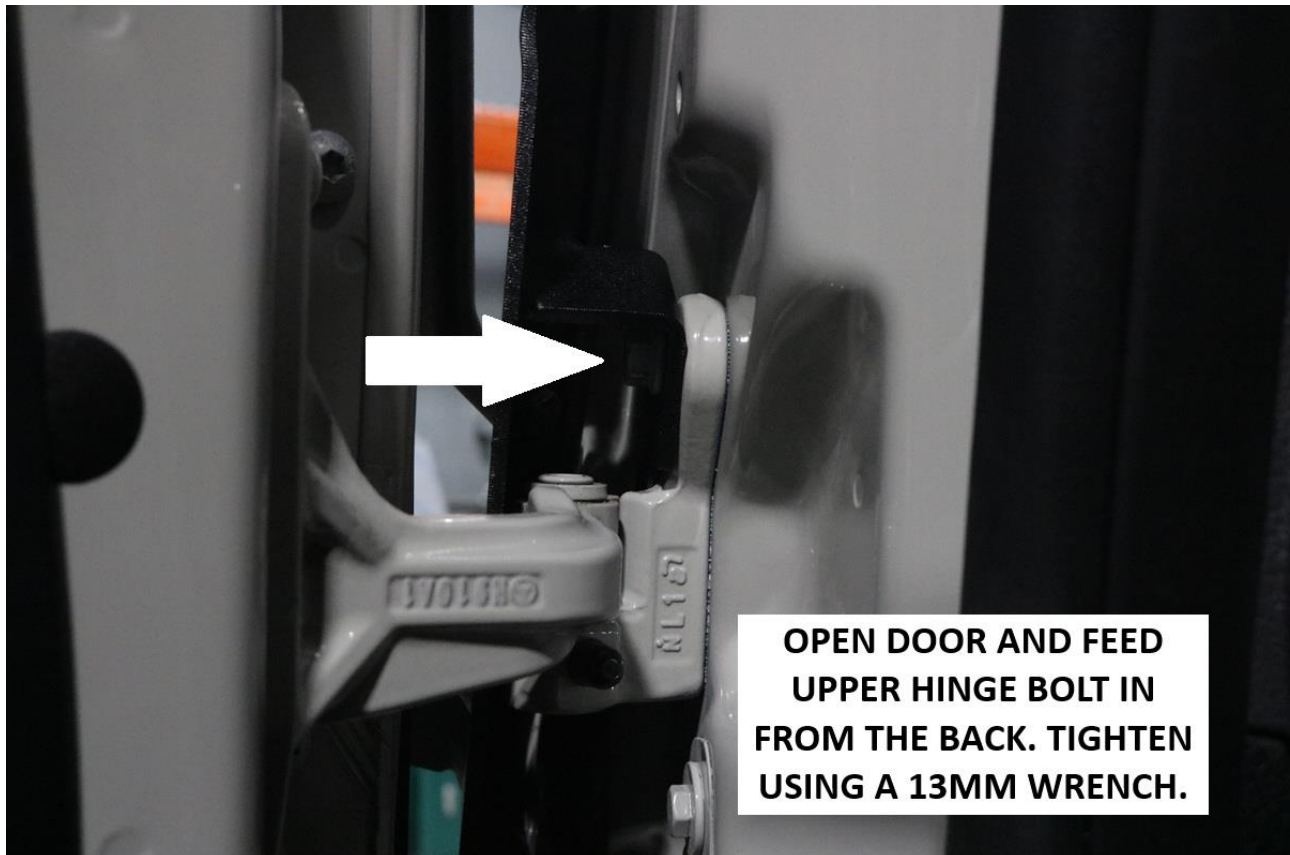
8. Drill small hole through grommet. Apply small bead of silicone sealant to grommet before pressing into hole.
- a. Apply additional sealant as needed around wiring passing through the OEM grommet.



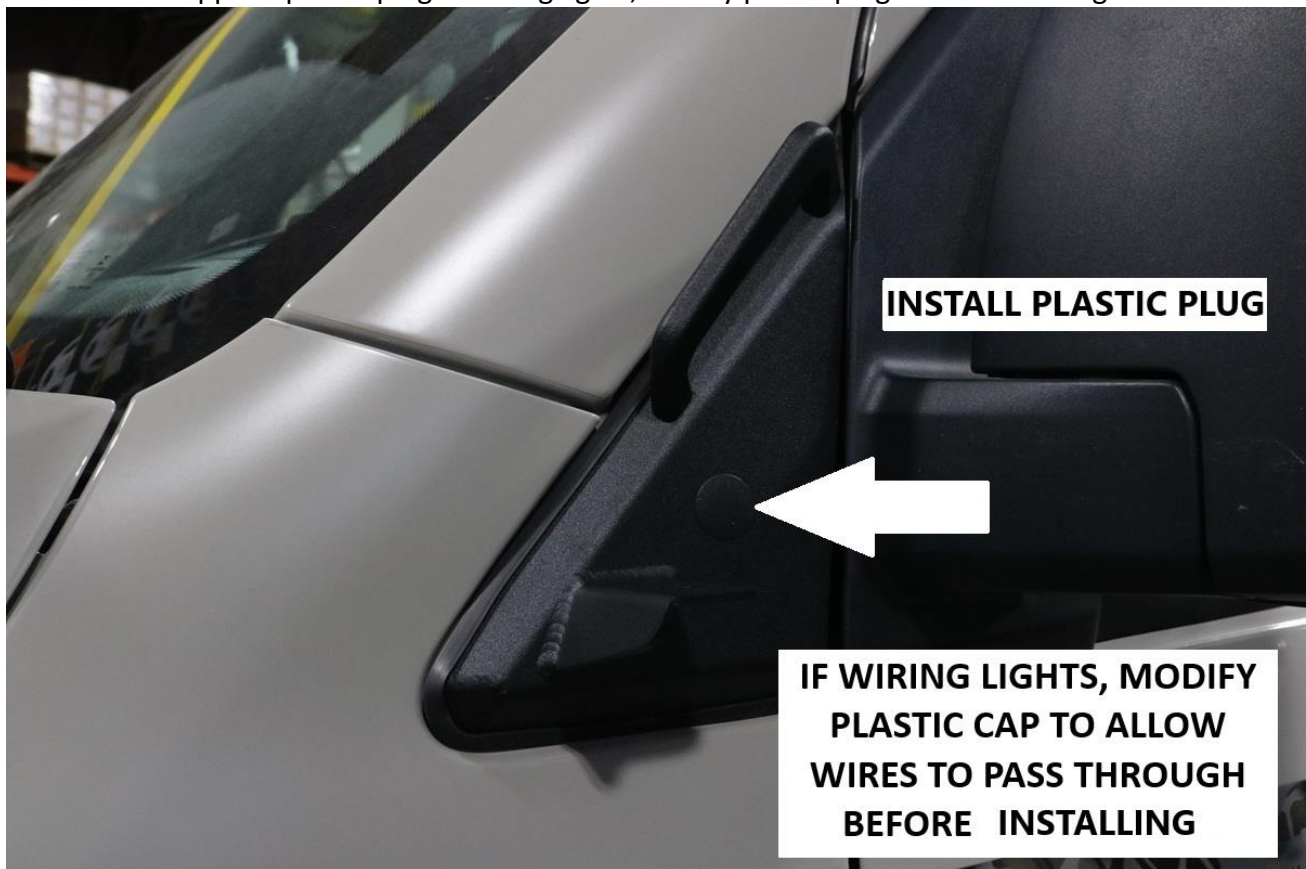
9. Mount using the factory lower hinge bolt. Torque to 22 ft-lbs (29 N.m) using a 13mm socket / wrench. If wiring lights, feed wires through hole.



10. Remove floor jack and open door. Feed the upper hinge bolt in from the back. Tighten using a 13mm wrench.



11. Install the supplied plastic plug. If wiring lights, modify plastic plug before installing.



Installation is Complete

#### RELEASE OF LIABILITY

I, the customer, do hereby release and forever discharge Van Compass LLC, their agents, employees, successors and assigns, and their respective heirs, personal representatives, affiliates, successors and assigns, and any and all persons, firms or corporations liable or who might be claimed to be liable, whether or not herein named, from any and all claims, demands, damages, actions, causes of action or suits of any kind or nature whatsoever, whether known or unknown, fixed or contingent, which I now have or may hereafter have or claim to have, as a result of or in any way relating to the following: Parts sold & installed by Van Compass LLC or parts sold & installed by end-user; any parts sold online, any parts sold online or installed by a re-seller, any parts installed by an installation shop.

It is understood and agreed that this payment is made and received in full and complete settlement and satisfaction of the aforesaid actions, causes of action, claims and demands; that this Release contains the entire agreement between the parties; and that the terms of this Agreement are contractual and not merely a recital. Furthermore, this Release shall be binding upon the undersigned, and his respective heirs, executors, administrators, personal representatives, successors and assigns. This Release shall be subject to and governed by the laws of the State of Idaho.

#### PRODUCT SAFETY WARNING:

Van Compass LLC strongly recommends the installation of products be done by a certified mechanic. If this does not occur, be certain the person(s) installing the product read, understand and follow all instructions and

warnings pertaining to the application before installation. Do not add, alter, or fabricate any factory or aftermarket parts to increase vehicle height over the intended height of the Van Compass LLC product purchased. Mixing component brands is not recommended.

Installation of suspension lift kits or any other lifting kits or devices will raise the center of gravity. For this reason, Van Compass LLC urges that extreme caution be used when encountering driving conditions which may cause vehicle imbalance. Furthermore, the driver's field of vision and judgment will not be as good due to the height of the vehicle. Due to the installation of larger tires, the speedometer will read slower than the actual speed being traveled and more distance will be required to stop the vehicle. It is the owner's responsibility to caution and warn any potential driver of the vehicle about these driving and handling conditions. Van Compass LLC will not be held liable or responsible for damages or personal injuries resulting from the use of lifting devices and or related products. The tires and rims should be changed to sufficiently increase the vehicle's total overall width and stability to help accommodate lifting devices.

Van Compass LLC aftermarket suspension products and accessories modify a vehicle for uses which exceed conditions anticipated by the vehicle manufacturer. The uses include the high performance demands required during off-road. These conditions vary in the degree of extremity and cannot be controlled by the vehicle or product manufacturer. If the components within the suspension system or accessories become worn due to frequent and/or extreme use, the safety and reliability of the vehicle is at risk. The maintenance of aftermarket equipment to ensure the vehicle occupants safety is entirely your responsibility. Do not purchase Van Compass LLC products unless you are willing to accept this responsibility. Do not install any Van Compass LLC suspension products or accessories unless you feel competent at installing the product without causing present or future injury to yourself or other vehicle occupants; seek an authorized installation center.

Most states have some type of law limiting vehicle height. The amount of lift allowed, and how the lift can be achieved, varies greatly. Several states offer exemptions for farm and commercial registered vehicles. It is the vehicle owner's responsibility to check state and local laws to ensure that their vehicle will be in compliance. Van Compass LLC reserves the right to make changes in design, materials and specifications as deemed necessary without prior notice and without assuming obligation to modify any product previously manufactured. Obligation or liabilities will not be assumed with respect to similar products previously advertised.

This Release of Liability and Product Safety Warning has been read and fully understood by the undersigned and has been explained to me.