

DREAM BEAMS

INSTALLATION INSTRUCTIONS

Rev. # 121007

Please take the time to read these INSTALLATION INSTRUCTIONS and check the Hardware Parts List to be sure you have all the listed parts.

These installation instructions are prepared for the professional installer with the proper equipment, tools and experience in suspension systems and safety.

Please read the warranty information (blue page enclosed). Complete your Product Warranty Card and mail it to DJM Suspension.

Please take a few minutes to fill out your installation helper (back side of warranty). Accurate measurements BEFORE BEGINNING INSTALLATION will show any irregularities in your vehicle.

**NEVER WORK UNDER TRUCK SUPPORTED BY A JACK ONLY !!!
USE QUALITY JACK STANDS WHICH HAVE A RATING ADEQUATE FOR YOUR TRUCKS WEIGHT!!!**

USE FACTORY COIL SPRINGS ONLY!! SHORTER COIL SPRINGS WILL CAUSE EXCESSIVE NEGATIVE CAMBER.

NOT DESIGNED FOR AIR BAGS.

INSTALLER MUST CHECK THAT THERE IS ABSOLUTELY NO CLEARANCE PROBLEMS BETWEEN THE WHEELS, THE SPINDLE, THE CALIPER, THE LOWER CONTROL ARMS AND ANY OTHER COMPONENT BEFORE DRIVING VEHICLE.

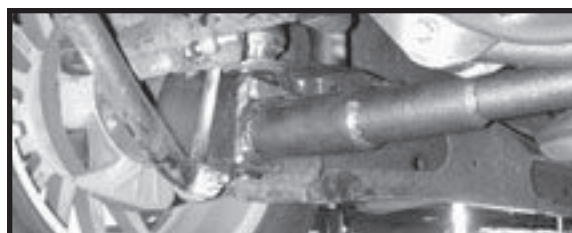
Installing DJM dream beams uses the same installation procedures as replacing a factory beams. Refer to your repair manual for guidelines. New shocks are recommended.

Coil spring length is critical for camber alignment. Factory coils may sag and cause negative camber. Depending on how much negative the camber there is, you may need to replace springs or you may be able to add a shim between spring retainer and beam. If the spring is too long this will cause positive camber. If so, you must cut off some of the coil to make it shorter and give more negative camber. Be extra careful not to cut too much. New coil springs may settle, you should put some miles on the truck before cutting new springs.

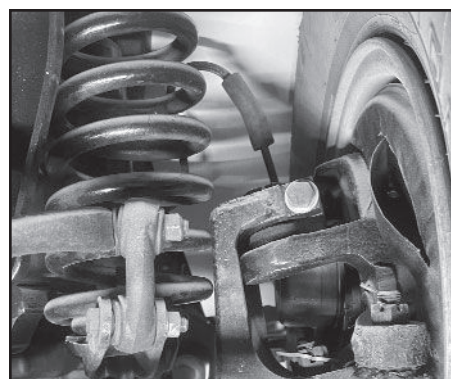
DO NOT ATTEMPT TO BEND YOUR NEW DJM DREAM BEAM TO CORRECT CAMBER.

DB30003 19871996 F150, DB30013 19891997 Ranger, DB30053 19871998 F350, DB30153 19992000 350\Excursion

Uses factory ball joints. Use alignment cam from stock beam.



Typical beam installed



Typical sway bar installed

Install factory sway bar end links as shown in diagram above. The sway bar may need to be moved above the bracket under coil spring. It may be necessary to reverse the left and right brackets. Loosen the bolts holding the d bushing. When the installation is complete and vehicle is on the ground, tighten end links first, then the dbushing. Remove the threaded clips. This plate will be moved forward until the end links stand straight up then line drill and replace the clips and bolt to frame. When the installation is complete and vehicle is on the ground tighten end links.

Sway bar spacer and bolts included with DB30053 only. All others use factory hardware.

DB30003, DB30013, DB30023, DB30033, DB30153 Hardware Parts List : 1) LH Dream Beams 1) RH Dream Beams	DB30053 19871998 F150 Hardware Parts List : 1) LH Dream Beams 1) RH Dream Beams 1) Sway Bar Hardware	DB30043 19651979 F100\F150 Hardware Parts List : 1) LH Dream Beams 1) RH Dream Beams 2) Tie Rod Extenders
---	--	---

DB30023 19831988 Ranger, DB30033 19831986 F150,

Ball joints are pressed into beams. DJM recommends replacing factory ball joints. Use alignment cam from stock beam.