



INSTALLATION GUIDE

PART NUMBER: 5571

REAR ANTI-SWAY BAR

GM TAHOE / YUKON 2WD / 4WD | 2021-2024

GM SUBURBAN / YUKON XL 2WD / 4WD | 2021-2024

300 W. PONTIAC WAY CLOVIS, CA 93612

PHONE: 800-445-3767 | EMAIL: INFO@BELLTECH.COM

THANK YOU

Thank you for choosing our high quality Belltech product. We have spent a great deal of time developing our line of products so that you will receive maximum performance with minimal difficulty during installation. Soon your vehicle will be on the road looking and feeling much improved.

Please take a moment to read all instructions and warnings prior to installation of your new Belltech product and before operating your vehicle. If you have any questions or concerns regarding any step in the installation process, please do not hesitate to call or email our customer support specialists who are trained to help you through any portion of this process.

Before You Begin:

It is of the utmost importance that you confirm all the components listed on the parts list are in the kit. You can find this list located on the last page(s) of your instructions. Do not begin installation if any part is missing. Instead, please call our Belltech customer service specialists.

Belltech Customer Support:

Phone: 1-800-445-3767

Email: info@belltech.com

Safety Information:

Warning: Do not work under a vehicle supported only by a jack. Place support stands securely under the vehicle in the manufacturer's specified locations unless otherwise instructed.

Proper use of safety equipment and eye/face/hand protection is necessary when performing any of the following instructions.

We strive for an exceptional experience for all our valued customers. If for any reason you need assistance with your Belltech products, please do not return the product to the store you purchased from, but rather call our dedicated customer service experts, from 7am to 5pm PST.

We recommend that a qualified mechanic, in a properly equipped facility, perform this installation.

It is very helpful to have an assistant available during installation.

Before Driving Your Vehicle:

It is important to double check all brake hoses, cables, and other components to be sure there is no interference. You must also check for wheel/tire to chassis/body interference. If any issues are found, review your installation instructions to be sure no steps were missed, and any problems are corrected.

Make sure your vehicle is aligned immediately following installation.

Check all hardware and torque at intervals for the first 10, 100, and 1000 miles.

Some of Belltech's products are designed to improve your vehicle's off-road performance. Leveling/lifting your vehicle may result in an altered center of gravity. It is crucial to use extreme care when operating your vehicle to prevent rollover and/or loss of control.

Any changes in your vehicle's suspension may result in transformed handleability. Please test-drive your vehicle in a remote location so you can become accustomed to the revised driving characteristics.

Perform headlight check and adjustment.

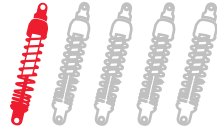
Failure to drive any modified vehicle in a safe manner may result in harm or death.

Never operate your modified vehicle under the influence of drugs, alcohol, or lack of adequate sleep.

Always wear your seatbelt.



DIFFICULTY:



INSTALLATION TIME: 1 Hour

RECOMMENDED TOOLS:

- Properly rated floor jack
- Support stands
- Wheel chocks
- Metric socket wrench set
- Metric wrench set
- Safety glasses
- Torque wrench rated up to 100 ft lbs.

JACKING, SUPPORTING, AND PREPARING THE VEHICLE

1. Park your vehicle on a smooth, level, concrete, or seasoned asphalt surface.
2. Block the front wheels of the vehicle using wheel chocks. Make sure the vehicle's transmission is in "PARK" (automatic) or first gear (manual).
3. Activate the parking brake.
4. Lift the rear of the vehicle off the ground using a properly rated floor jack. Lift the vehicle so the rear tires are approximately 6-8 inches off the ground.
5. Place support stands rated for the vehicle's weight. The stands must be positioned in the factory specified locations. (Refer to the owner's manual). Prior to lowering the vehicle onto stands, make sure the support stands will contact the chassis. It is very important that the vehicle is properly supported to prevent any harm to oneself or to the vehicle.
6. Lower the vehicle slowly onto the stands.



Technician reminder:

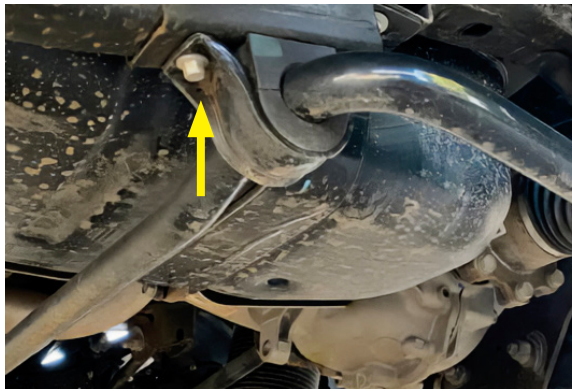
Never work under a vehicle supported only by a jack. It is necessary to place support stands securely under the vehicle in the manufacturer's specified locations unless otherwise instructed.

ORIGINAL SWAY BAR REMOVAL

7. Use an 8mm wrench to hold the end link ball joint shaft from rotating while removing the 18mm lower end link nut. Detach the sway bar from the lower end links.



8. Remove the 10mm bolts from the pivot bushing brackets and detach the sway bar from the vehicle.



Technician note:

The new Belltech sway bar will use the original end links and the pivot bushing hardware. Thoroughly clean the mounting areas before installation.

BELLTECH SWAY BAR INSTALLATION

9. Thoroughly lubricate the inside of the supplied pivot bushings using the grease packet included with the kit.
10. Place the bushings on both sides of the Belltech sway bar, close to the same position as the original sway bar. Once located, rotate the bushings slightly to evenly spread the lubricant. Place the bushing brackets over the bushings.

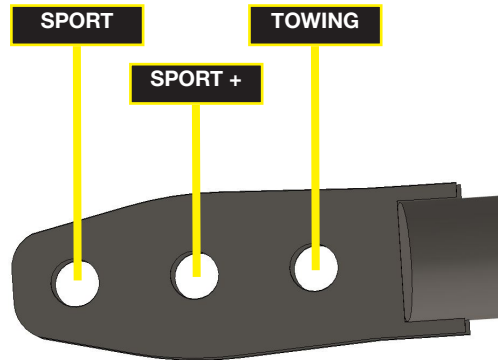


11. Place the Belltech sway bar and the bushing support plate on the chassis mount. The support plate is placed between the chassis and bushing bracket. Align the holes in the bracket and support plate with the original mounting holes. Use the supplied 10mm-1.5 x 35mm bolts and 3/8" washers to fasten the sway bar. Do not torque the bolts yet.



BELLTECH ANTI-SWAY BAR INSTALLATION CONTINUED

12. Please choose a sway bar setting for your vehicle: SPORT, SPORT PLUS, OR TOWING (SPORT is softer and TOWING is firm).



13. Attach the sway bar to the end links using the original nuts; torque to 74 ft lbs.



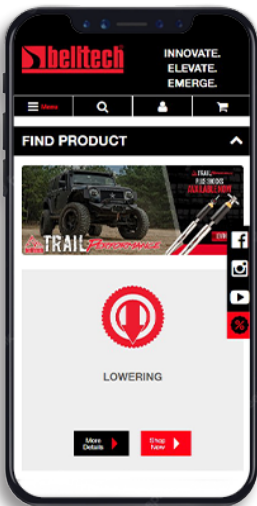
14. Adjust the position of the sway bar so it is centered from left to right and front to back. Torque the pivot bushing bracket bolts to 37 ft lbs.

FINALIZING THE INSTALLATION

15. Lift the vehicle and remove the support stands.
16. Carefully lower the vehicle onto flat ground.
17. Check that all components and fasteners have been properly installed and torqued.
18. Read and perform all tasks in the “Before Driving Your Vehicle” section of page 1 of your instructions.

THANK YOU FOR CHOOSING BELLTECH.

You are now a part of the Belltech family and we are eager to catch a glimpse of your newly modified vehicle. Give us a shout out and let us know how much you love our product. Don't forget, we offer other Belltech related merchandise for you and your vehicle on our website www.belltech.com



belltechsuspension



Belltech Suspension



@belltechsuspension

If you have any questions, concerns, or warranty related issues regarding your Belltech product, please call or email our experienced customer service specialists.

Belltech Customer Support:

Phone: 1-800-445-3767

Email: info@belltech.com

KIT CONTENTS



SWAY BAR KIT		
Part number	Description	Qty
5571-300	1-1/4" REAR ANTI-SWAY BAR	1
5571-777	HARDWARE KIT	1

HARDWARE KIT		
Part number	Description	Qty
110625	3/8" WASHER	4
112026	10MM - 1.5 X 35MM BOLT	4
113095	1-1/4" PIVOT BUSHING	2
115002-95	PIVOT BUSHING BRACKET	2
115013-954	BUSHING SUPPORT PLATE	2
55000-10	WHITE LITHIUM GREASE	1



KW automotive North America, Inc.

300 W. Pontiac Way

Clovis, CA 93612

Phone: +1-559-875-0222

Toll Free: 1-800-445-3767

belltech.com