

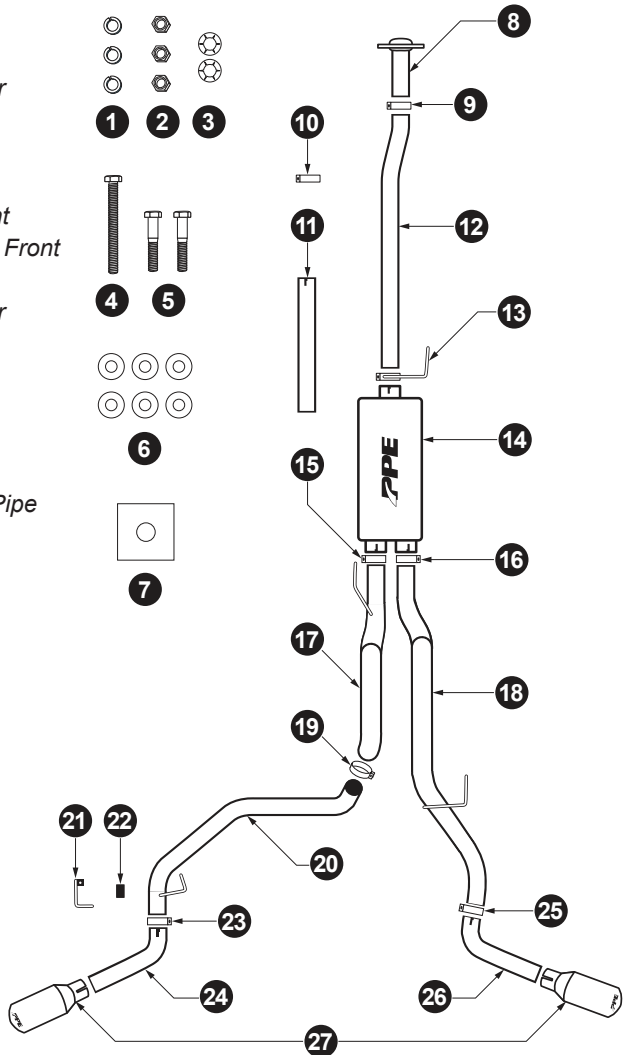
Performance Exhaust System Cat-Back Ford F150 2.7L, 3.5L, 5.0L (2015-current)

(317040020, 317040030, 317043030)

Installation Guide

CONTENTS

- 1 Lock Washers (3)
- 2 Nuts (3)
- 3 Hanger Locks (2)
- 4 3/8" - 16 x 3.5" Bolt (1)
- 5 3/8" - 16 x 2" Bolts (2)
- 6 7/16" Flat Washers (6)
- 7 Frame Hanger Backing Plate (1)
- 8 Inlet Pipe with Flange
- 9 3.0" Clamp
- 10 3.0" Clamp
- 11 Adapter Pipe
- 12 Inlet Pipe
- 13 3" Ring Clamp Hanger
- 14 Muffler
- 15 2.5" Clamp
- 16 2.5" Clamp
- 17 Driver Side Pipe, Front
- 18 Passenger Side Pipe, Front
- 19 2.5" Clamp
- 20 Driver Side Pipe, Rear
- 21 Frame Hanger
- 22 Rubber Hanger
- 23 2.5" Clamp
- 24 Driver Side Exit Pipe
- 25 2.5" Clamp
- 26 Passenger Side Exit Pipe
- 27 Exhaust Tips





REMOVAL

- Step 1. Vehicle off. Raise vehicle on hoist or rack.*
- Step 2. Apply penetrating lubricant to the stock rubber hanger mounts and clamp flange bolts, for easier removal.*
- Step 3. Remove stock bolts from front flange, loosen the clamp. Twist stock Inlet Pipe clockwise and slide muffler assembly back to separate.*
- Step 4. Slide the muffler and tailpipe assembly to the rear to disengage the supporting rubber hanger mounts. You may want to cut the tailpipe assembly for easier removal. It is recommended to have help removing stock exhaust.*

INSTALLATION

Refer to specifics below for your truck version. These outline the trim length of the Inlet Pipe (12).

126" Wheel base -Regular Cab/6.5' bed

Trim 18" off of Inlet Pipe (12) (do not use Adapter Pipe 11)

133" Wheel base - SuperCab/5.5' bed

Trim 12" off of Inlet Pipe (12) (do not use Adapter Pipe 11)

145" Wheel base - SuperCrew/5.5' Bed

Use Inlet Pipe (12) with no modifications (do not use Adapter Pipe 11)

145" Wheel base - Regular Cab/8' Bed

Use Inlet Pipe (12) with no modifications (do not use Adapter Pipe 11)

145" Wheel base - SuperCab /6.5' Bed

Use Inlet Pipe (12) with no modifications (do not use Adapter Pipe 11)

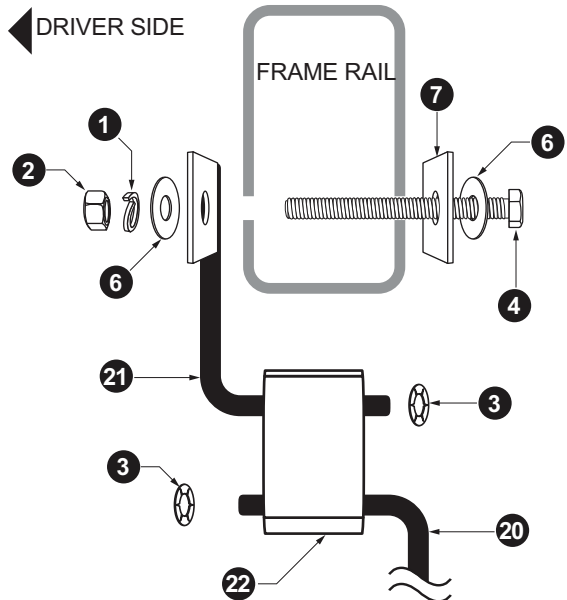
157" Wheel base - SuperCrew /6.5' Bed

Trim 6" off of extension pipe Adapter Pipe (11) and use with Inlet Pipe (12)

163" Wheel base - SuperCab /8' Bed

Use Inlet Pipe (12) and extension pipe Adapter Pipe (11) with no modifications.

- Step 1** Install Inlet Pipe with Flange (8) on OEM head pipe using the hardware provided (1, 2, 5, 6). Leave loose for later adjustment.
- Step 2** Slide 3.0" Clamp (9) over open end of Inlet Pipe with Flange (8). If needed, slide Adapter Pipe (11) over Inlet Pipe (12), then slide 3.0" Clamp (10) over connection. Tighten to secure but leave loose for now.
- Step 3** Install 3.0" Ring Clamp Hanger (13) over open end of Inlet Pipe (12), then fit single-flange inlet end of Muffler (14) over the end of Inlet Pipe (12) and secure with 3.0" Ring Clamp Hanger (13). Leave loose for now. Mount Ring Clamp Hanger (13) through rubber hanger to secure.
- Step 4** Install 2.5" Clamp (16) on Passenger Side Pipe, Front (18) and slide into passenger side Muffler (14) exhaust flange. Slide 2.5" Clamp (16) over connection. Tighten to secure but leave loose for now. Install Passenger Side Pipe Front (18) hanger through rubber hanger to secure.
- Step 5** Install 2.5" Clamp (15) on Driver Side Pipe, Front (17) then slide into driver side Muffler (14) exhaust flange. Slide 2.5" Clamp (15) over connection. Tighten to secure but leave loose for now. Install Driver Side Pipe, Front (17) hanger through rubber hanger to secure.
- Step 6** Install 2.5" Clamp (19) on Driver Side Pipe, Rear (20) then slide into Driver Side Pipe, Front (17) . Tighten to secure but leave loose for now.
- Step 7** Locate pass-through hole on driver side frame rail located adjacent to Driver Side Pipe, Rear (20) hanger. Feed fastener assembly (4, 6, 7, 6, 1, 2) through Frame Hanger (21). Tighten to secure.
- Step 8** Slip Rubber Hanger (22) over Frame Hanger (21)
- Step 9** Install Driver Side Pipe, Rear (20) hanger through installed Rubber Hanger (21) to secure.





- Step 10 Install 2.5" Clamp (23) on Driver Side Pipe, Rear (20) then slide on the end of Driver Side Exit Pipe (24). Tighten to secure but leave loose for now.*
- Step 11 Install 2.5" Clamp (25) on Passenger Side Exit Pipe, Front (18) then slide on the end of Passenger Side Exit Pipe, (26) . Tighten to secure but leave loose for now.*
- Step 12 Adjust the position of each exhaust component to completely clear other vehicle components and ensure suspension travel will not contact any part of the exhaust.*
- Step 13 Tighten all exhaust components beginning with the Inlet Pipe with Flange (8) and working your way towards the Driver and Passenger Side Exit Pipes (24, 26). Adjust for clearance as needed.*
- Step 14 Install Exhaust Tips (27) on Driver and Passenger Side Exit Pipes (24, 26). Adjust placement to ensure they don't contact any other vehicle components. Tighten to secure.*
- Step 15 Install the Hanger Locks (3) on the Driver Side Pipe, Rear (20) hanger and Frame Hanger (21).*

Installation complete.

DISCLAIMER OF LIABILITY

Performance products can increase horsepower above and beyond factory specifications. Additional horsepower creates more stress on the drive-train components, which could result in drive-train failure.

Note regarding emissions-related, non-E.O.-legal products: THESE PRODUCTS ARE LEGAL IN CALIFORNIA ONLY FOR RACING VEHICLES THAT MAY NEVER BE USED, OR REGISTERED OR LICENSED FOR HIGHWAY OR OFF-ROAD USE.

This agreement sets forth the terms and conditions for the use of PPE products. The installation of this product indicates that the Buyer has read and understands this agreement and accepts the terms and conditions. PPE (Pacific Performance Engineering) Inc., its distributors, employees, and dealers (the "Seller") shall not be responsible for the product's proper use and service. The buyer hereby waives all liability claims. The Buyer hereby acknowledges no reliance on the Seller's skill or judgment to select or furnish goods suitable for any particular purpose and that there are no liabilities which extend beyond the description on the face hereof, and the Buyer hereby waives all remedies or liabilities expressed or implied, arising by law or otherwise (including without any obligation of the Seller with respect to fitness, merchantability and consequential damages), or whether or not occasioned by the Seller's negligence. The Seller disclaims any warranty and expressly disclaims any liability for personal injury or damages. The Buyer acknowledges and agrees that the disclaimer of any liability for personal injury is a material term for this agreement and the Buyer agrees to indemnify the Seller and to hold the Seller harmless from any claim related to the item of equipment purchased. Under no circumstances will the Seller be liable for any damages or expenses by reason of use or sale of any such equipment. The Seller assumes no liability regarding the improper installation or misapplication of its products. It is the installer's responsibility to check for proper installation and if in doubt, contact the manufacturer. The Buyer is solely responsible for all warranty issues from the manufacturer.

LIMITATION OF WARRANTY

The Seller gives Limited Warranty as to description, quality, merchantability, and fitness for a particular purpose, productiveness, or any other matter of Seller's product sold herewith. The Seller shall not be responsible for the products proper use and service and the Buyer hereby waives all rights other than those expressly written herein. This warranty shall not be extended, altered or varied except by a written instrument signed by Seller and Buyer. The Warranty on PPE Manifolds and Up-Pipes Kits, OEM-Length Up-Pipes is three (3) years, a limited lifetime warranty on PPE cast aluminum pans and covers, and a limited lifetime warranty on PPE Transmission Coolers and one (1) year limited warranty on all other PPE products from the date of sale to original buyer and limited solely to the parts contained within the products kit. All products that are in question of Warranty must be returned prepaid to the Seller and must be accompanied by a dated proof of purchase receipt. All Warranty claims are subject to approval by Seller. Under no circumstances will the Seller be liable for any labor charged or travel time incurred in diagnosis for defects, removal, or re-installation - of this product or any other contingent expenses. Under no circumstances will the Seller be liable for any damage or expenses incurred by reason of the use or sale of any such equipment. In the event that the buyer does not agree with this agreement: the buyer may promptly return this product, in a new and unused condition in its original packaging, with a dated proof of purchase to the place of purchase within ten (10) days from date of purchase for a full refund. The installation of this product indicates that the buyer has read and understands this agreement and accepts its terms and conditions.

⚠ CA WARNING: Handling passenger or off-highway motor vehicle parts can expose you to chemicals such as phthalates and lead, which can cause cancer and reproductive harm. To minimize exposure, service the vehicle in a well-ventilated area, wear gloves, and wash your hands. For more information see www.P65Warnings.ca.gov/motor-vehicle-parts.

