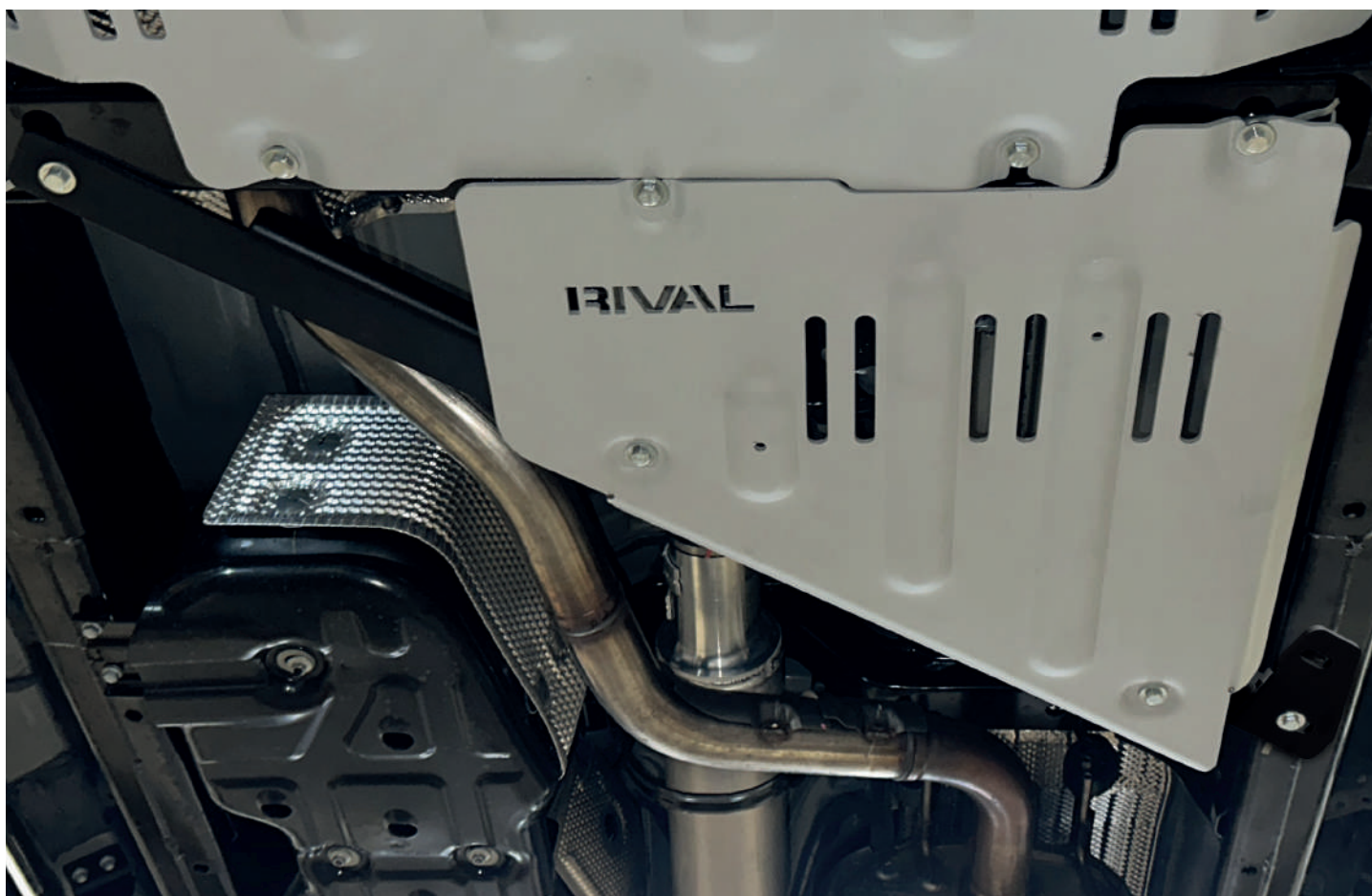


PRODUCT: TRANSFER CASE SKID PLATE

APPLICATION: TOYOTA TACOMA (2024-PRESENT)

PART NO: 2333.9572.1.6

UP-TO-DATE
MANUAL



CAUTION!

To reduce the risk of serious injury or damage to property: Before you start installing and using this product, read the full instructions, pay special attention to the conditions of safe use and recommendations for installation! When installing or maintaining this product, it is necessary to use protective goggles. Check the integrity of the installed components and torque all hardware every 250 miles (400 kms). Discontinue use if there is any damage to the structure or fasteners!

NOTICE

Skid plates are supplemental protection. We cannot guarantee protection against all possible damage from impacts. When driving, be careful of objects and terrain that may damage sensitive parts of the vehicle.

TRANSFER CASE SKID PLATE

RIVAL

Part number: 2333.9572.1.6

Vehicle Compatibility: TOYOTA TACOMA 2.4, 2.4 Hybrid; AT; 4WD, RWD; DoubleCab, XtraCab (2024-PRESENT)

Material: Aluminum



SAFETY NOTICE

- * The RIVAL skid plate is designed to complement the use and design of the specified vehicle under conditions underlined by the vehicle manufacturer.
- * While driving the vehicle at any speed, collision with another vehicle, animal or object must always be avoided.
- * Following any collision with another vehicle, animal or object, the RIVAL skid plate and the vehicle must be inspected by a specialized or suitably qualified vehicle technician for possible damage to the components and assemblies in order to confirm suitability for further use of the vehicle.
- * It is strongly recommended that you do not operate a vehicle with a damaged skid plate or its components. In the case of damage, please contact the nearest RIVAL dealer. A damaged vehicle or skid plate is extremely dangerous and should be avoided at all cost.
- * If applicable, we recommend using a funnel when changing the oil to prevent spills and ensure a clean process.

INSTALLATION NOTICE

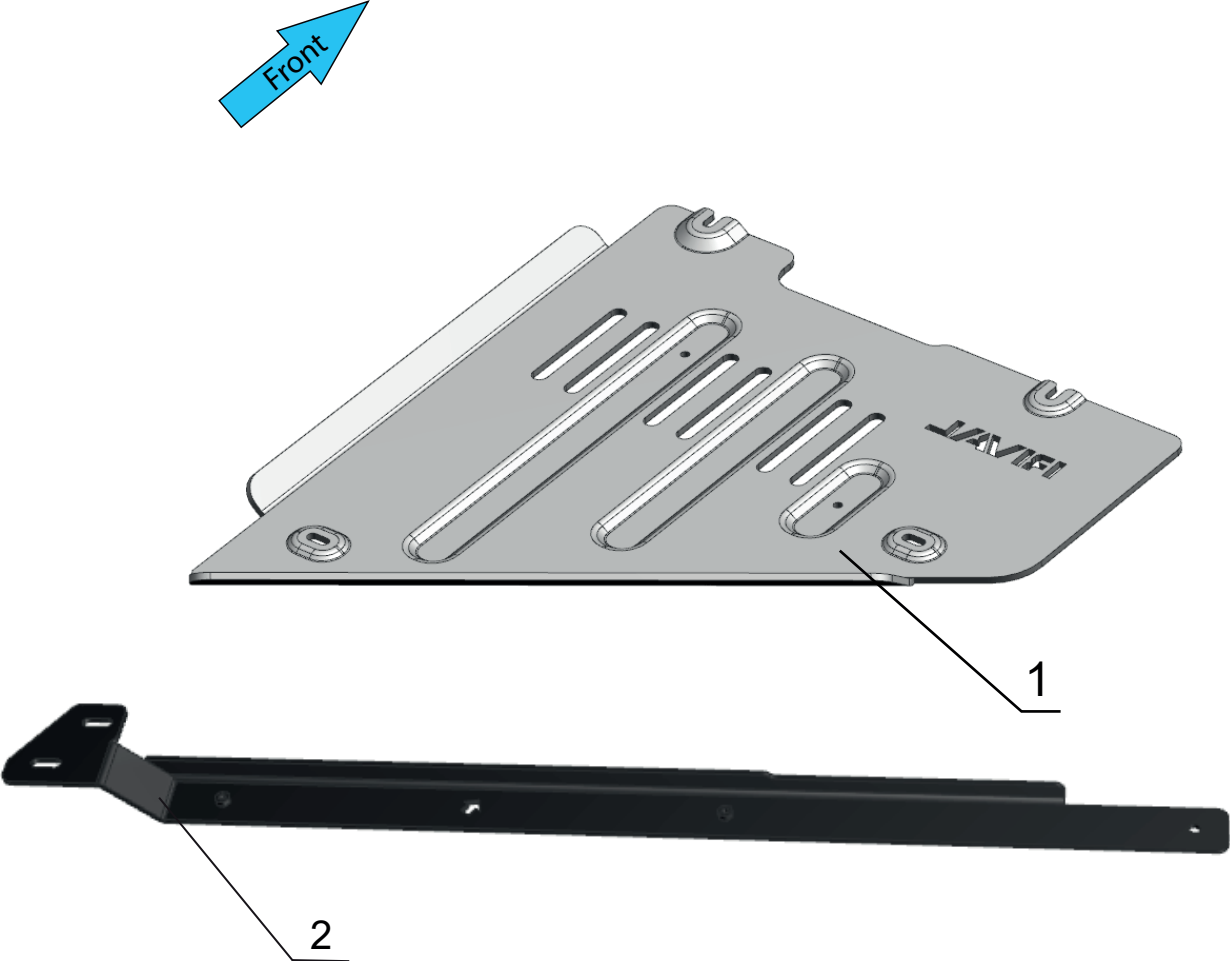
- * The RIVAL skid plate must be mounted to the vehicle according to this installation manual.
- * Personal safety during the installation process must be adhered to at all times.
- * Do not install this skid plate on vehicle models other than those listed in this manual.
- * We recommend using blue threadlocker on all hardware
- * Estimated time for installation: 1 hour.

REQUIRED TOOLS

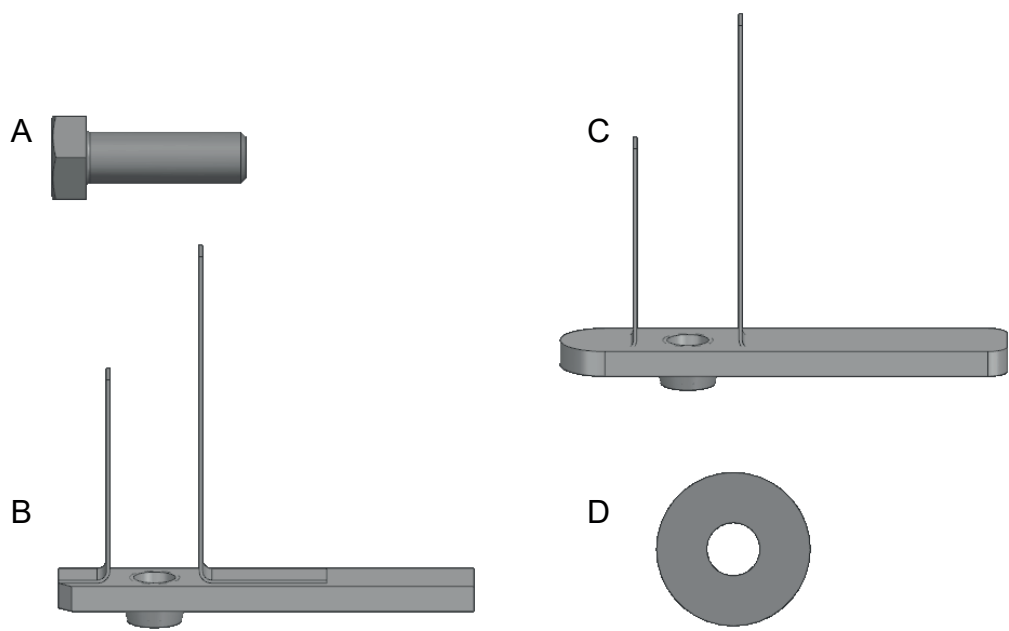
- * Basic tool kit
- * Torque wrench

TORQUE SETTING

- * M8 - 24 N·m (17.7 lb/ft)



- 1. Transfer case skid plate..... Qty 1
- 2. Mounting bracket.....Qty 1



A. Bolt M8x1.25x25.....	Qty 6
B. Insert nut M8x65.....	Qty 2
C. Insert nut M8x70.....	Qty 2
D. Washer M8.....	Qty 6

INSTALLATION PROCEDURE



*If equipped, remove factory or any aftermarket skid plates that might interfere with installation.

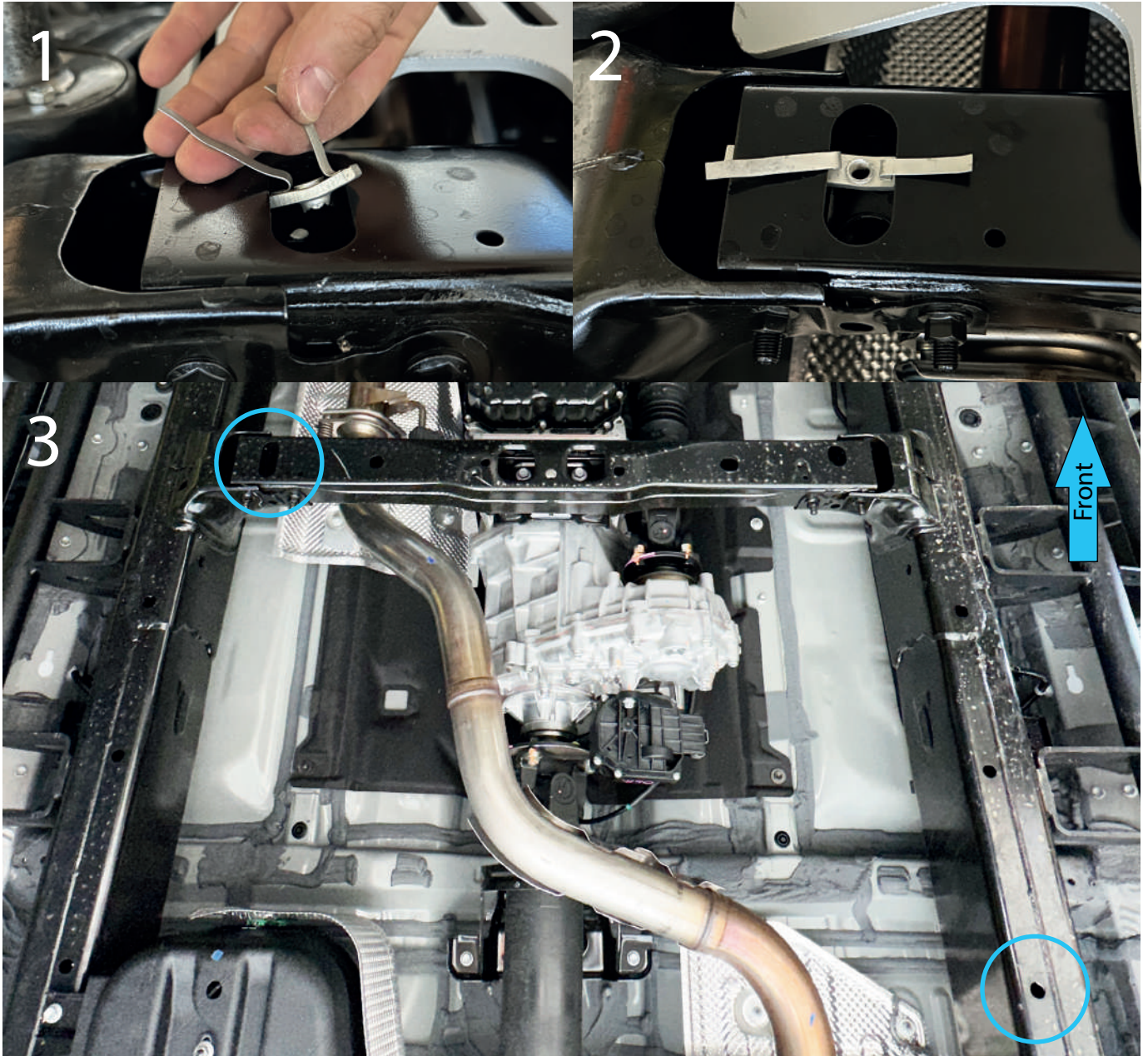


Fig. 1

1. Install M8x65 insert nut (item B) as shown in Fig.1.

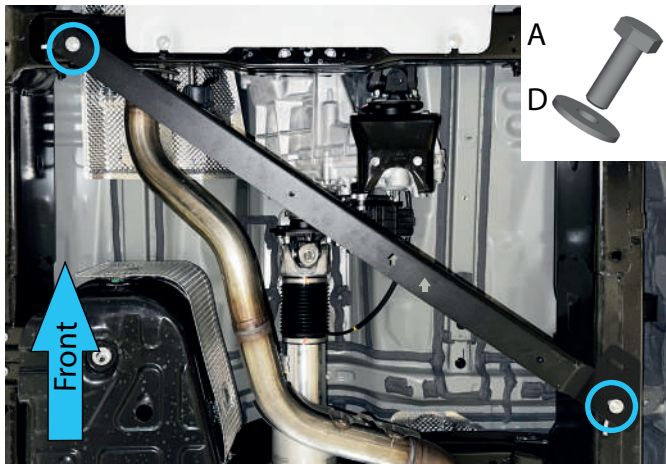


Fig. 2

2. Install the mounting bracket (item 2) using M8x25 bolts (item A) and M8 washers (item D) as shown in Fig.2.

***Torque hardware.**



Fig. 3

3. Install M8x70 insert nuts (item C) as shown in Fig.3 & Fig.4.

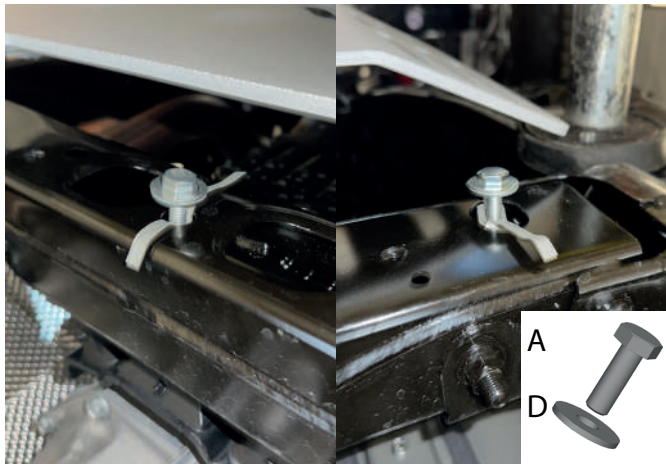


Fig. 4

4. Install M8x25 bolts (item A) with M8 washers (item D) into previously installed insert nuts in step 3 as shown in Fig.4.

***At this point only thread bolts in 2-3 turns.**

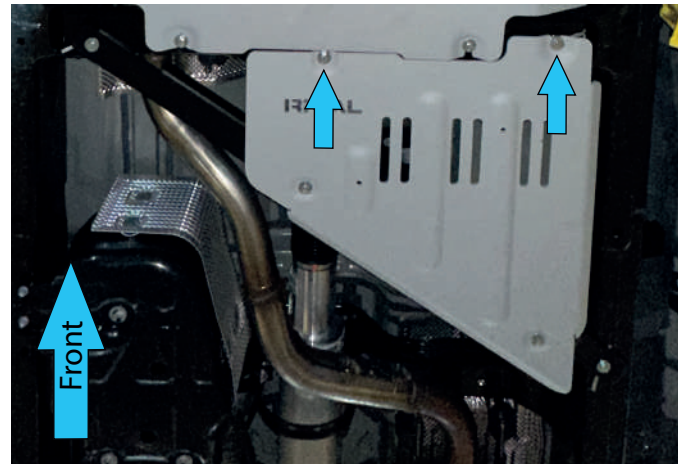


Fig. 5

5. Slide the transfer case skid plate (item 1) over the previously installed hardware from step 4 as shown in Fig. 5.

***Do not tighten yet.**

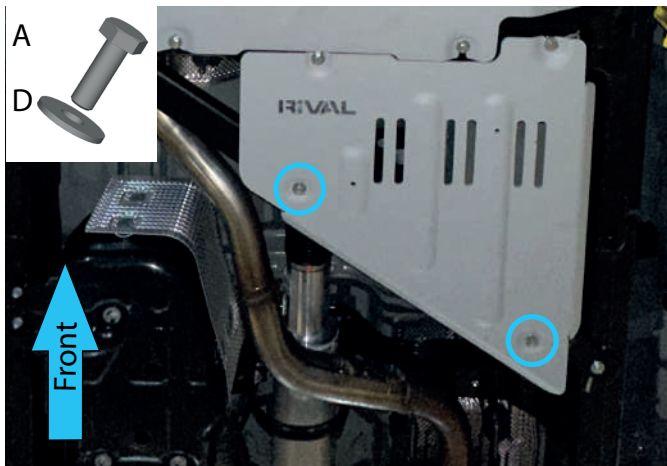


Fig. 6

6. Secure the skid plate to the mounting bracket (item 2) using M8x25 bolts (item A) and M8 washers (item D) as shown in Fig.6.

***Torque all hardware.**

Before operating a vehicle fitted with RIVAL Skid Plates:

- Make sure all fittings are properly torqued.
- Ensure the integrity of the structure and its components.

