



PRODUCT: ALUMINUM ENGINE SKID PLATE

APPLICATION: 5th GEN TOYOTA 4RUNNER (2009-PRESENT)  
TOYOTA LAND CRUISER 150 PRADO (2009-2023)  
LEXUS GX460 (2009-2019) (ONLY WITH TRD SKID PLATE)

PART NO: 2333.9542.2.6



## CAUTION!

To reduce the risk of serious injury or damage to property: Before you start installing and using this product, read the full instructions, pay special attention to the conditions of safe use and recommendations for installation! When installing or maintaining this product, it is necessary to use protective goggles. Check the integrity of the installed components and torque all hardware every 250 miles (400 kms). Discontinue use if there is any damage to the structure or fasteners!

## NOTICE

Skid plates are supplemental protection. We cannot guarantee protection against all possible damage from impacts. When driving, be careful of objects and terrain that may damage sensitive parts of the vehicle.

# ENGINE SKID PLATE

# RIVAL

Part number: 2333.9542.2.6

Vehicle compatibility: 5th GEN TOYOTA 4RUNNER (2009-PRESENT), 4L  
TOYOTA LAND CRUISER 150 PRADO (2009-2017),  
2.8D; 3.0D; 2.7L; 4L  
TOYOTA LAND CRUISER 150 PRADO (2017-2023),  
2.8D; 2.7L; 4L  
LEXUS GX 460 (2009-2019) , 4.6L

Material: Aluminum / Steel



## SAFETY NOTICE

- \* The RIVAL skid plate is designed to complement the use and design of the specified vehicle under conditions underlined by the vehicle manufacturer.
- \* While driving the vehicle at any speed, collision with another vehicle, animal or object must always be avoided.
- \* Following any collision with another vehicle, animal or object, the RIVAL skid plate and the vehicle must be inspected by a specialized or suitably qualified vehicle technician for possible damage to the components and assemblies in order to confirm suitability for further use of the vehicle.
- \* It is strongly recommended that you do not operate a vehicle with a damaged skid plate or its components. In the case of damage, please contact the nearest RIVAL dealer. A damaged vehicle or skid plate is extremely dangerous and should be avoided at all cost.
- \* If applicable, we recommend using a funnel when changing the oil to prevent spills and ensure a clean process.

## INSTALLATION NOTICE

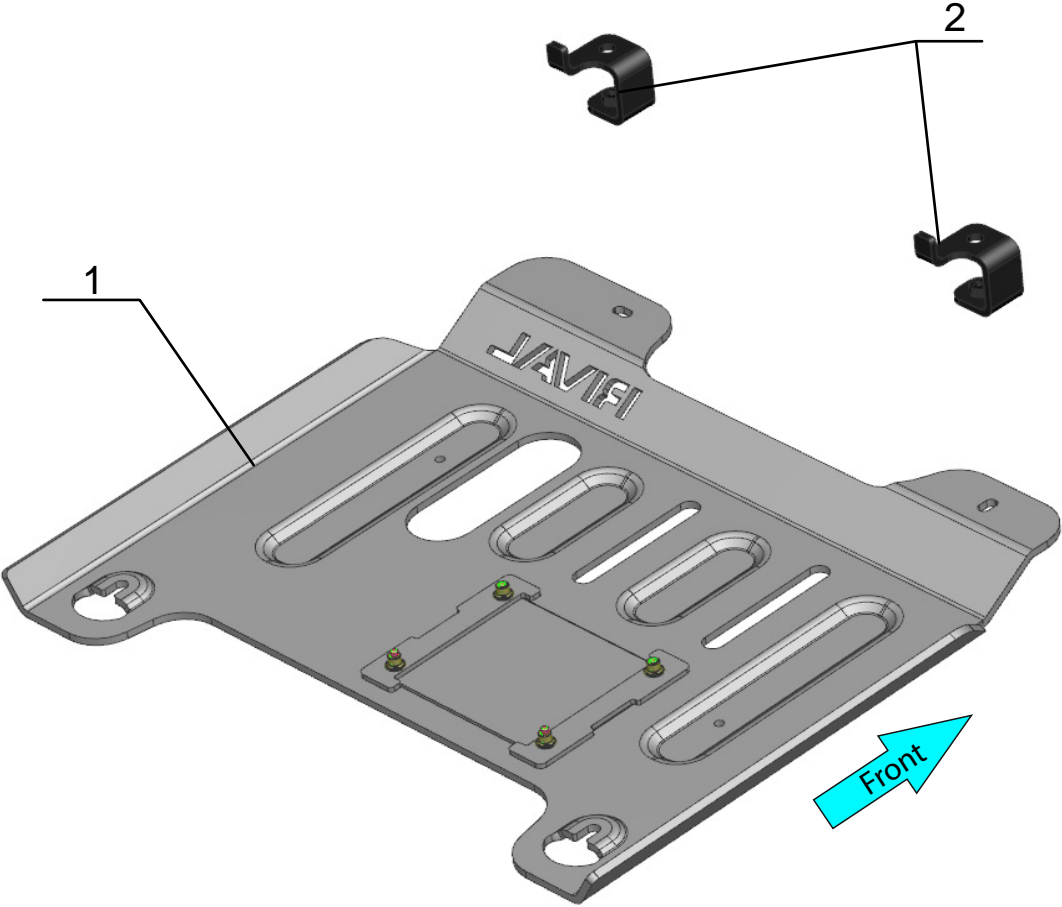
- \* The RIVAL skid plate must be mounted to the vehicle according to this installation manual.
- \* Personal safety during the installation process must be adhered to at all times.
- \* Do not install this skid plate on vehicle models other than those listed in this manual.
- \* We recommend using blue threadlocker on all hardware
- \* Estimated time for installation: 1 hour.

## REQUIRED TOOLS

- \* Basic tool kit
- \* Torque wrench

## TORQUE SETTING

- \* M8 - 24 N·m (17.7 lb/ft)

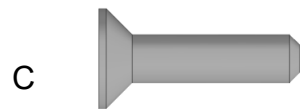


- 1. Engine skid plate.....Qty 1
- 2. Mounting bracket.....Qty 2



- A.Bolt M8x1.25x30..... Qty 6
- B. Flat washer 8..... Qty 6

SPARE PARTS



- C. Countersunk bolt M6x1x20.....Qty 4



# INSTALLATION PROCEDURE

**RIVAL**

\*If equipped, remove the factory skid plate or any other aftermarket skid plate.

\*\* You can use the factory hardware. If not, the RIVAL kit includes everything for fitment.

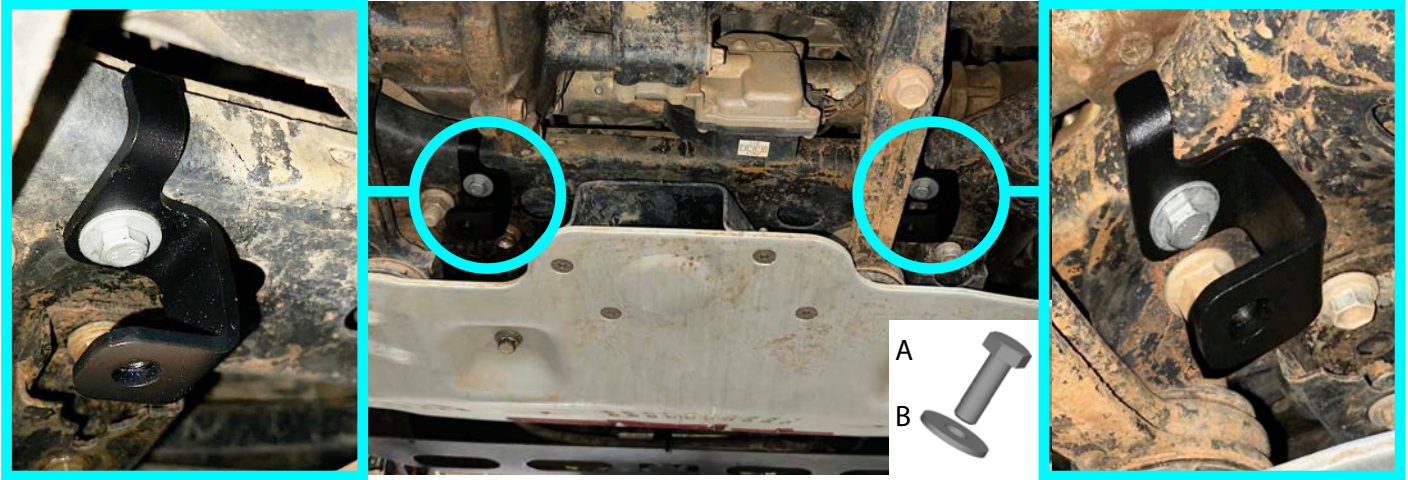


Fig.1

1. Install the mounting brackets (item 2) on the vehicle using bolts M8x30 (item A) and flat washers 8 (item B) (fig.1).

**\*Tighten hardware after that.**

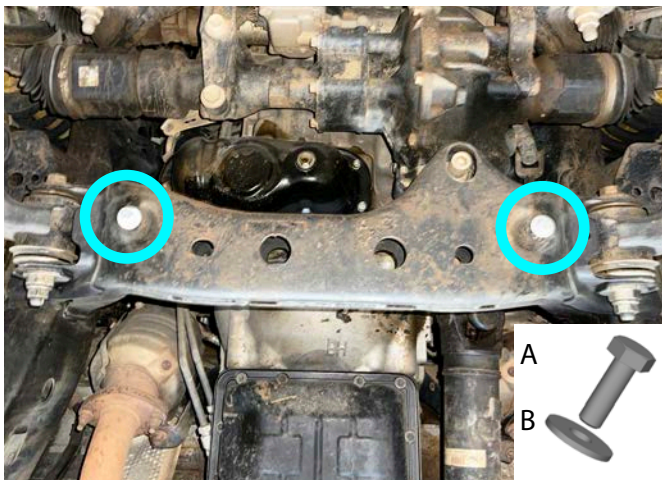


Fig.2

2. Screw bolts M8x30 (item A) with flat washers 8 (item B) as shown in fig.2.

**\*Do not tighten yet.**

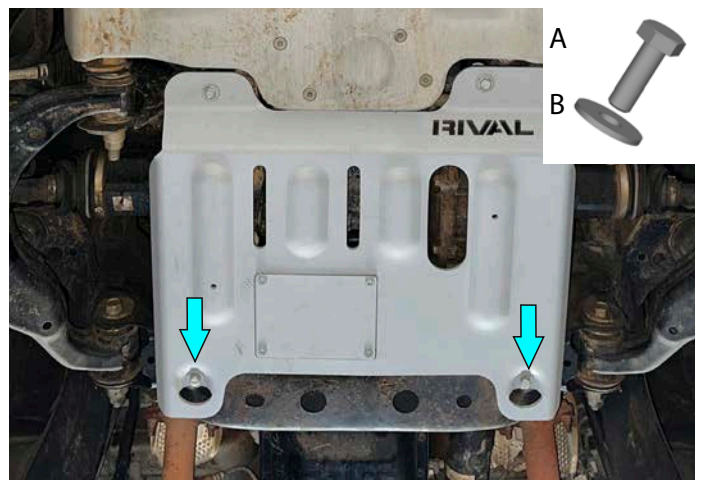


Fig.3

3. Put the rear part of engine skid plate (item 1) on installed bolts M8x30 (item A) and flat washers 8 (item B) from step 2 as shown in fig.3.

**\*Do not tighten yet.**

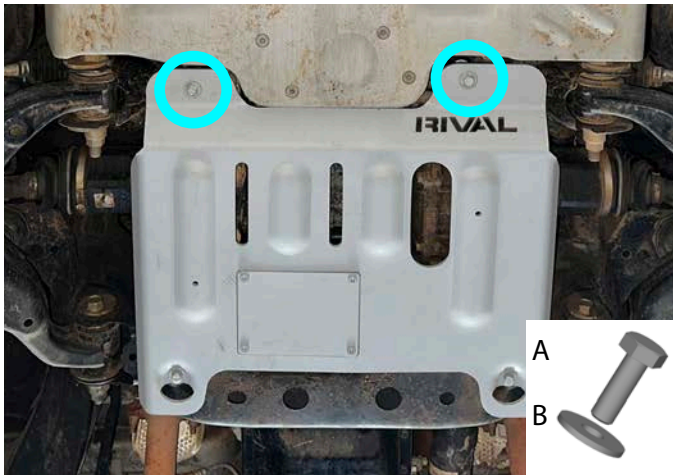


Fig.4

4. Fix the front part of engine skid plate (item 1) to mounting brackets (item 2) using bolts M8x30 (item A) and flat washers 8 (item B), as shown in fig.4.

**\*Tighten hardware after that.**

Before operating a vehicle fitted with RIVAL Skid Plates:

- Make sure all fittings are properly torqued.
- Ensure the integrity of the structure and its components.

