



# INSTALLATION MANUAL

PRODUCT: ALUMINUM ENGINE SKID PLATE  
APPLICATION: FORD BRONCO SPORT (2021-2022)  
FORD BRONCO SPORT BADLANDS (2021-PRESENT)  
FORD MAVERICK TREMOR (2023-PRESENT)  
PART NO: 2333.1883.2.6



## CAUTION!

To reduce the risk of serious injury or damage to property: Before you start installing and using this product, read the full instructions, pay special attention to the conditions of safe use and recommendations for installation! When installing or maintaining this product, it is necessary to use protective goggles. Check the integrity of the installed components and torque all hardware every 250 miles (400 kms). Discontinue use if there is any damage to the structure or fasteners!

## NOTICE

Skid plates are supplemental protection. We cannot guarantee protection against all possible damage from impacts. When driving, be careful of objects and terrain that may damage sensitive parts of the vehicle.

# ENGINE SKID PLATE



Part number: 2333.1883.2.6

Vehicle Compatibility: Ford Bronco Sport 1.5L AT 4WD (2021-2022)  
Ford Bronco Sport Badlands 2.0L AT 4WD (2021-Present)  
Ford Maverick Tremor 2.0L AT 4WD (2023-Present)

Material: Aluminum



## SAFETY NOTICE

- \* The RIVAL skid plate is designed to complement the use and design of the specified vehicle under conditions underlined by the vehicle manufacturer.
- \* While driving the vehicle at any speed, collision with another vehicle, animal or object must always be avoided.
- \* Following any collision with another vehicle, animal or object, the RIVAL skid plate and the vehicle must be inspected by a specialized or suitably qualified vehicle technician for possible damage to the components and assemblies in order to confirm suitability for further use of the vehicle.
- \* It is strongly recommended that you do not operate a vehicle with a damaged skid plate or its components. In the case of damage, please contact the nearest RIVAL dealer. A damaged vehicle or skid plate is extremely dangerous and should be avoided at all cost.
- \* If applicable, we recommend using a funnel when changing the oil to prevent spills and ensure a clean process.

## INSTALLATION NOTICE

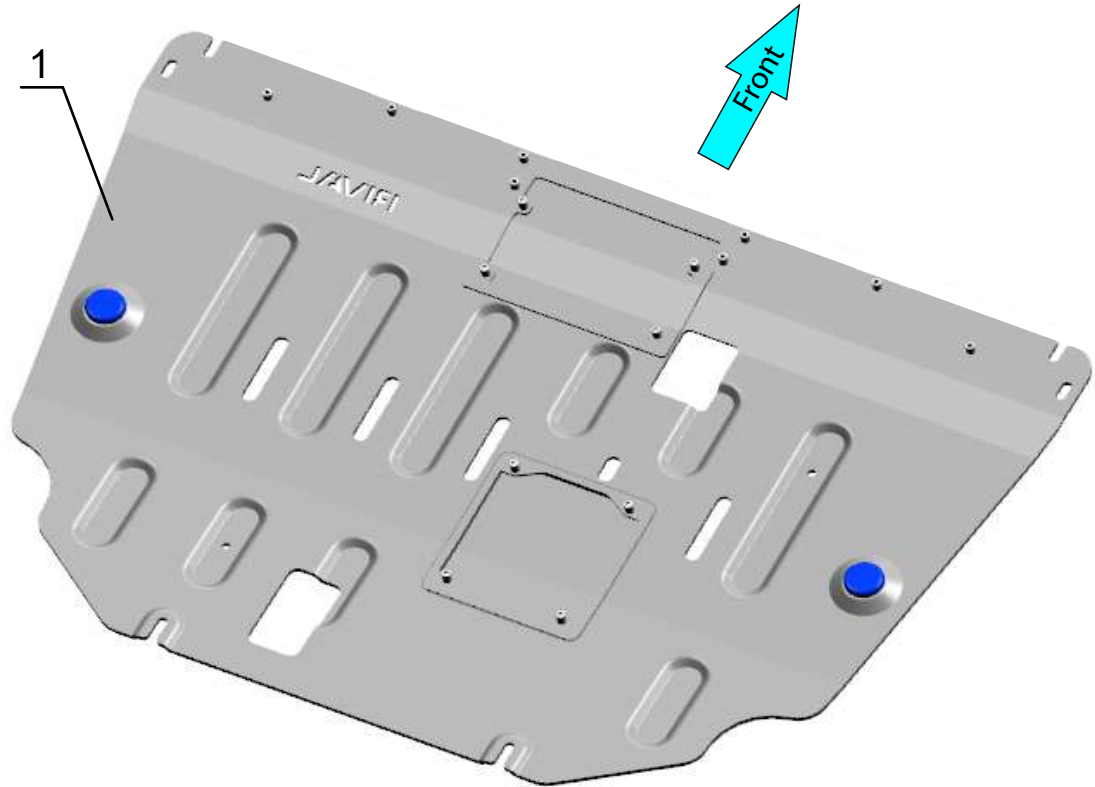
- \* The RIVAL skid plate must be mounted to the vehicle according to this installation manual.
- \* Personal safety during the installation process must be adhered to at all times.
- \* Do not install this skid plate on vehicle models other than those listed in this manual.
- \* We recommend using blue threadlocker on all hardware
- \* Estimated time for installation: 1 hour.

## REQUIRED TOOLS

- \* Basic tool kit
- \* Torque wrench

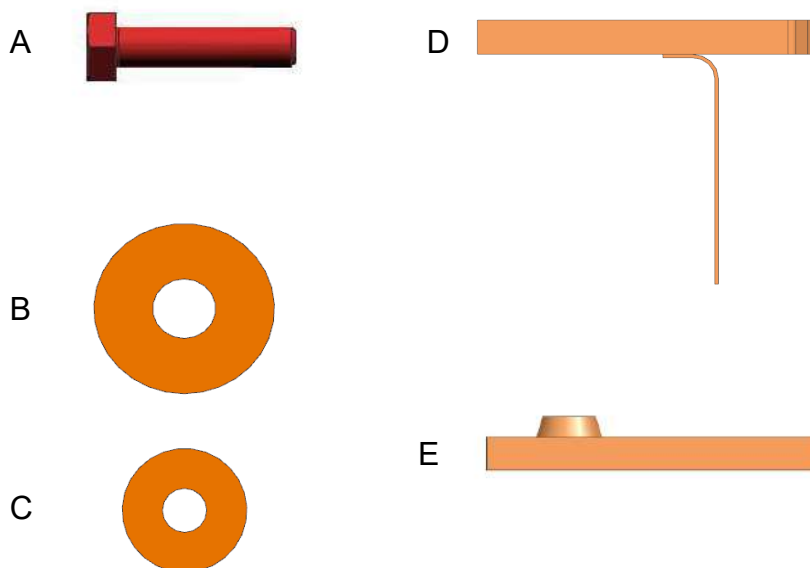
## TORQUE SETTING

- \* M6 - 9.8 Nm (7.2 lb/ft)



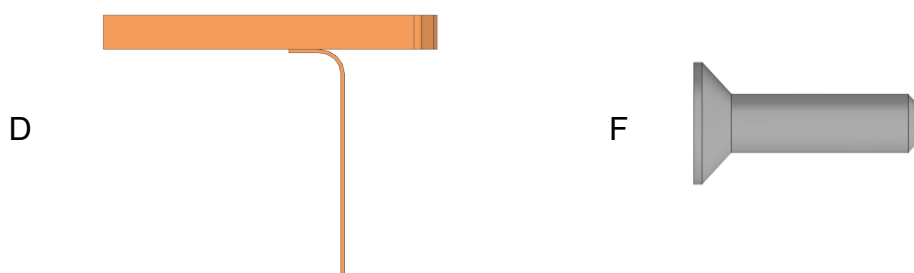
1. Engine skid plate.....Qty 1

# PARTS LISTING



- A. Bolt M6x1x30..... Qty 8
- B. Washer M8..... Qty 2
- C. Washer M6..... Qty 8
- D. Long insert nut with wire M6..... Qty 2
- E. Insert nut M6..... Qty 2

# SPARE PARTS



- D. Long insert nut with wire M6..... Qty 2
- F. Countersunk bolt M6x1x20..... Qty 8

# INSTALLATION PROCEDURE



\*If equipped, remove factory or any aftermarket skid plates that might interfere with installation.

## Ford Bronco Sport 1.5L

\*If equipped, remove factory or any aftermarket skid plates that might interfere with installation.

\*While not necessary to remove the oil filter access port you can trim the plastic bumper to allow for unrestricted access.

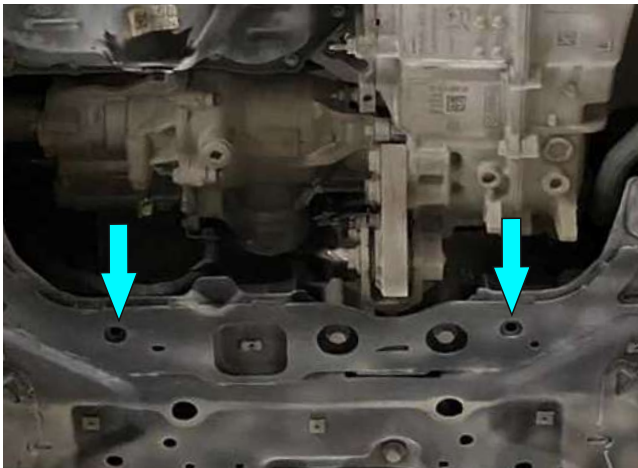


Fig. 1

1. Insert long M6 insert nuts with wire (item D) into frame and align with holes shown in fig. 1.



Fig. 2

2. Insert M6 insert nuts (item E) and align with holes shown in fig. 2 on both sides of the vehicle.



Fig. 3

3. Loosely Install M6x30 bolts (item A) and M6 washers (item C) into insert nuts from step 2 as shown in fig.3.

\* **Do not tighten yet.**

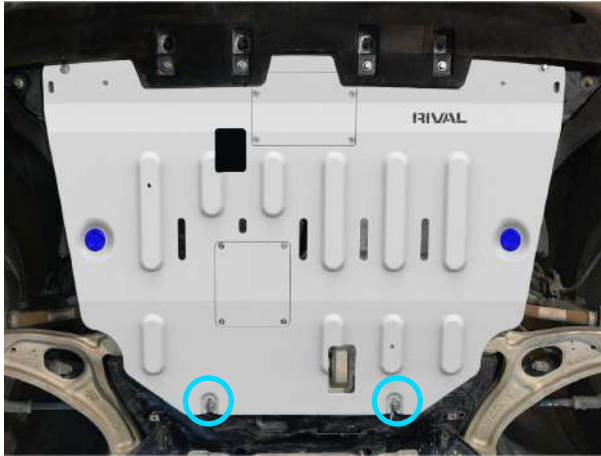


Fig. 4

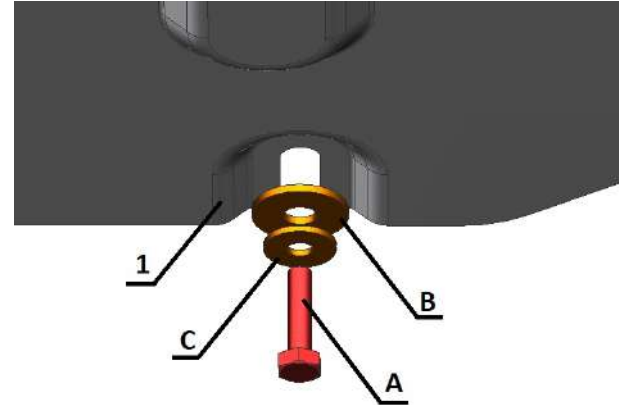


Fig. 5

4. Slide front of the skid plate (item 1) under the factory bumper and onto the previously installed M6 bolts (item A). Secure the rear of the skid plate using M6x30 bolts (item A), M6 washers (item C) and M8 washers (item B) as shown in Fig 4&5.

**\*Torque installed hardware**

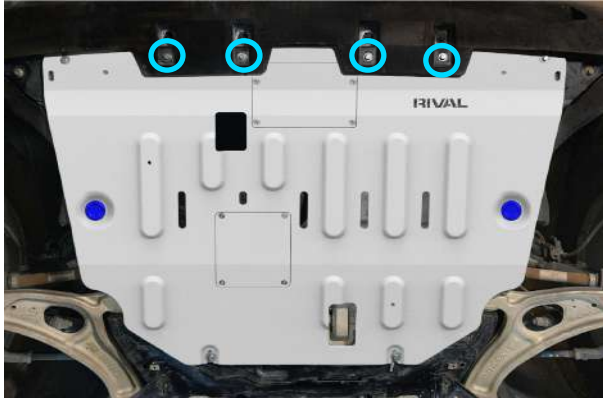


Fig. 6

5. Secure factory bumper to skid plate using M6x30 bolts (item A) and M6 washers (item C).

**\*Torque all hardware.**



# INSTALLATION PROCEDURE



Ford Bronco Sport Badlands 2.0L  
Ford Maverick Tremor 2.0L

\*If equipped, remove factory or any aftermarket skid plates that might interfere with installation

\*While not necessary to remove the oil filter access port you can trim the plastic bumper to allow for unrestricted access.

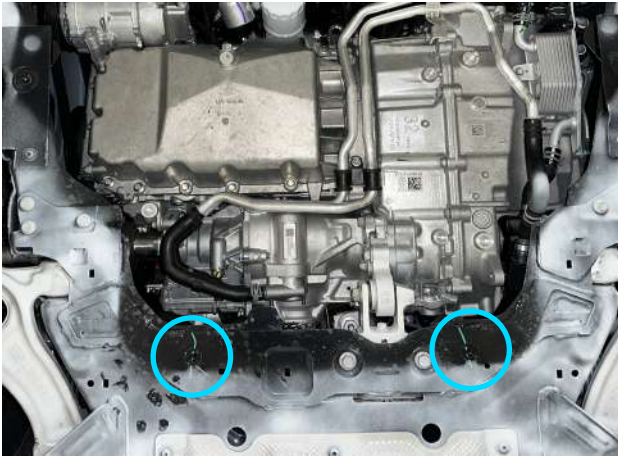


Fig. 1

1. Loosely install factory bolts into factory threaded mounting points as shown in Fig. 1  
**\*At this point only thread in bolts 2-3 turns**

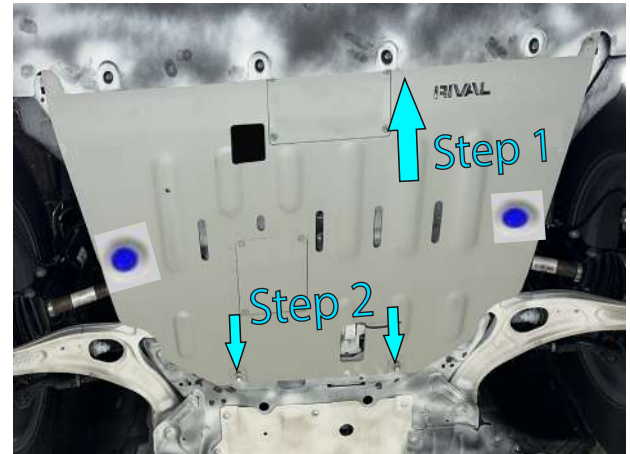


Fig. 2

Step 1: Slide front of the skid plate over and into the plastic bumper as shown in fig.2.  
Step 2: Slide the skid plate back and over the previously installed bolts as shown in fig.2.  
**\* Do not tighten yet.**



Fig. 3

3. Secure the front corners of the skid plate using factory bolts as shown in fig.3.  
**\* Do not tighten yet.**

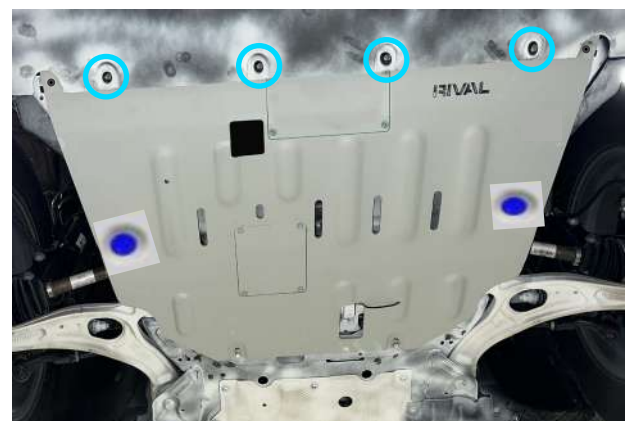


Fig. 4

4. Secure the bumper to the skid plate using M6x30 bolts (item A) and M6 washers (item C) as shown in fig.4.  
**\* Torque all hardware.**

Before operating a vehicle fitted with RIVAL Skid Plate:

- Make sure all fittings are properly torqued.
- Ensure the integrity of the structure and its components.

