



## FORD 2021-25 2 & 4 Door Nerf Step

**Thank you for choosing Rough Country for all your vehicle needs.**

Please read instructions before beginning installation. Check the kit hardware against the kit contents shown below. Be sure you have all needed parts and know where they go.

If question exist, please call us @1-800-222-7023. We will be happy to answer any questions concerning this product.

Check all fasteners for proper torque. Check to ensure for adequate clearance between all components.

Periodically check all hardware for tightness.

### KIT CONTENTS:

1 - Driver Side Step  
1 - Pass Side Step  
2 - Front Bracket  
4 - Mid/Rear Bracket (2 for 2 Door)  
RCT2480CCBAG1  
RCF21582DBAG

### TOOLS NEEDED:

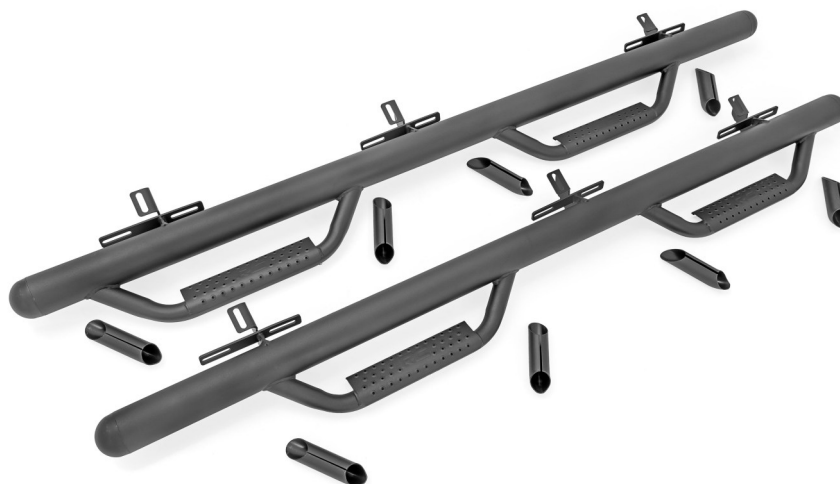
13mm Wrench and Socket  
17mm Socket

### HARDWARE INCLUDED:

RCT2480CCBAG1  
12 - 8mm x 20mm Bolt  
12 - 8mm Flat Washer  
12 - 8mm Serrated Flange Nut

### RCF21582DBAG

12 - 8mm x 25mm Bolt  
12 - 8mm Serrated Flange Nut  
12 - 8mm Washer  
6 - 10mm x 25mm Bolt  
6 - 10mm Flat Washer  
6 - 10mm Lock Washer



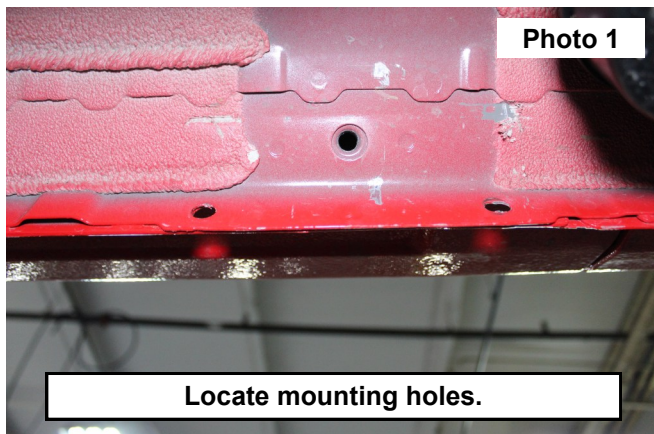
### Torque Specs:

Size	Grade 5	Grade 8	Size	Class 8.8	Class 10.9
5/16"	15 ft/lbs	20ft/lbs	6MM	5ft/lbs	9ft/lbs
3/8"	30 ft/lbs	35ft/lbs	8MM	18ft/lbs	23ft/lbs
7/16"	45 ft/lbs	60ft/lbs	10MM	32ft/lbs	45ft/lbs
1/2"	65 ft/lbs	90ft/lbs	12MM	55ft/lbs	75ft/lbs
9/16"	95 ft/lbs	130ft/lbs	14MM	85ft/lbs	120ft/lbs
5/8"	135ft/lbs	175ft/lbs	16MM	130ft/lbs	165ft/lbs
3/4"	185ft/lbs	280ft/lbs	18MM	170ft/lbs	240ft/lbs

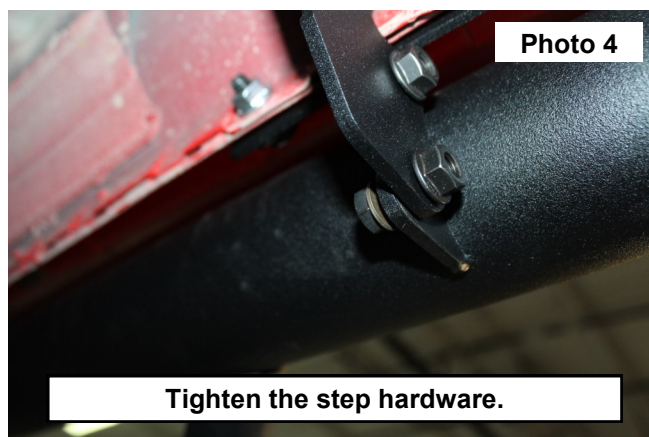


## INSTALLATION INSTRUCTIONS

1. Support and place the step mounting brackets over the threaded holes in the bottom of the cab. **See Photo 1.**
2. The 2 Door Step will not have the center mount. Secure each of the mounts using (3) of the supplied 10mm-1.5 x 25mm bolts in each of the (3) mounts. **See Photo 2.**



3. Secure each of the step mounts to the rocker flange using (2) of the supplied 8mm-1.25 x 25mm bolts, (2) 8mm flat washers and (2) flange nuts through each hole in the step mount and the rocker flange. Tighten using a 13mm socket and wrench. **See Photo 3.**
4. With assistance, lift the driver side step tube to the previously installed brackets using the 8mm hardware from RCT2480CCBAG1. Tighten with two 13mm wrenches. **See Photo 4.**
5. Repeat for other side of vehicle.



By purchasing any item sold by Rough Country, LLC, the buyer expressly warrants that he/she is in compliance with all applicable, State, and Local laws and regulations regarding the purchase, ownership, and use of the item. It shall be the buyers responsibility to comply with all Federal, State and Local laws governing the sales of any items listed, illustrated or sold. The buyer expressly agrees to indemnify and hold harmless Rough Country, LLC for all claims resulting directly or indirectly from the purchase, ownership, or use of the items.

