



2024 Mercedes Sprinter Van Hood Assist

Thank you for choosing Rough Country for all your vehicle needs.

Please read instructions before beginning installation. Check the kit hardware against the kit contents shown below. Be sure you have all needed parts and know where they go.

If question exist, please call us @1-800-222-7023. We will be happy to answer any questions concerning this product.

Check all fasteners for proper torque. Check to ensure for adequate clearance between all components.

Check and retighten wheels at 50 miles and again at 500 miles. Periodically check all hardware for tightness.

KIT CONTENTS:
2- Frame brackets
2- Struts
1- Hardware bag

TOOLS NEEDED:
10mm wrench or socket
13mm wrench or socket

HARDWARE INCLUDED:
2- Hood mount bushings
2- 8mm x 1" Ball pin
2- 8mm Washers
2- 8mm Flange nuts



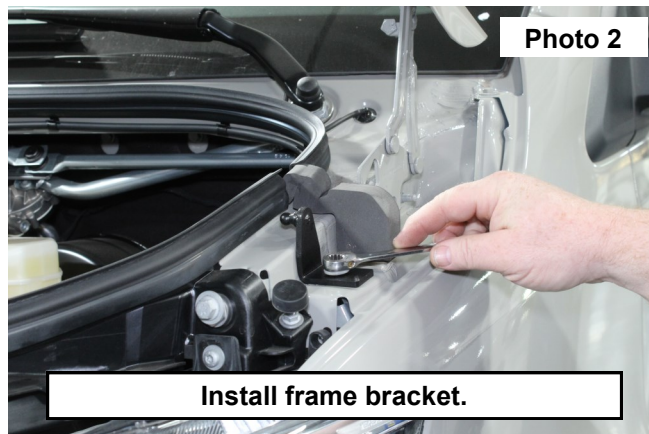
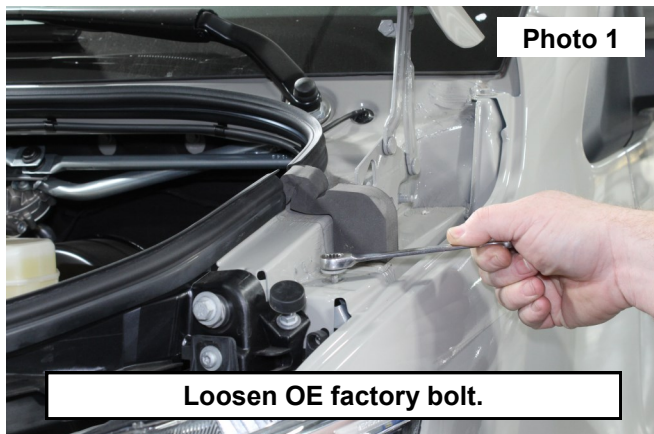
Torque Specs:

Size	Grade 5	Grade 8	Size	Class 8.8	Class 10.9
5/16"	15 ft/lbs	20ft/lbs	6MM	5ft/lbs	9ft/lbs
3/8"	30 ft/lbs	35ft/lbs	8MM	18ft/lbs	23ft/lbs
7/16"	45 ft/lbs	60ft/lbs	10MM	32ft/lbs	45ft/lbs
1/2"	65 ft/lbs	90ft/lbs	12MM	55ft/lbs	75ft/lbs
9/16"	95 ft/lbs	130ft/lbs	14MM	85ft/lbs	120ft/lbs
5/8"	135ft/lbs	175ft/lbs	16MM	130ft/lbs	165ft/lbs
3/4"	185ft/lbs	280ft/lbs	18MM	170ft/lbs	240ft/lbs

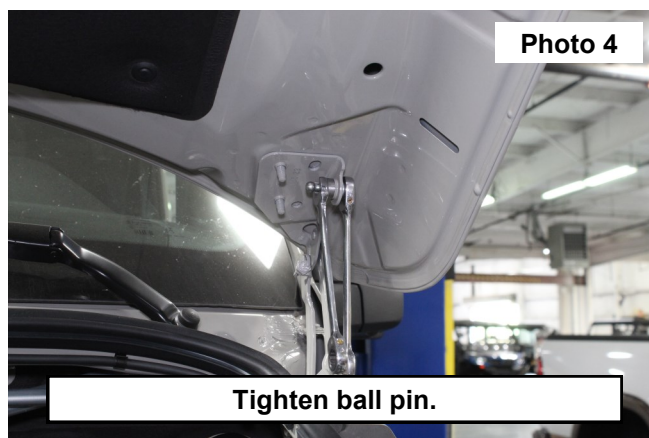


INSTALLATION INSTRUCTIONS

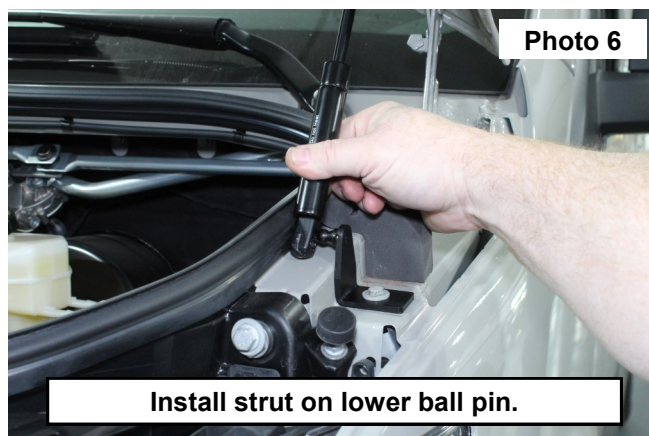
1. **Beginning on Driver side.** Insure hood is supported and remove and retain the OE bolt from frame, using a 10mm socket. **See Photo 1.**
2. Install frame mount bracket with retained OE bolt and washer. **See Photo 2.**



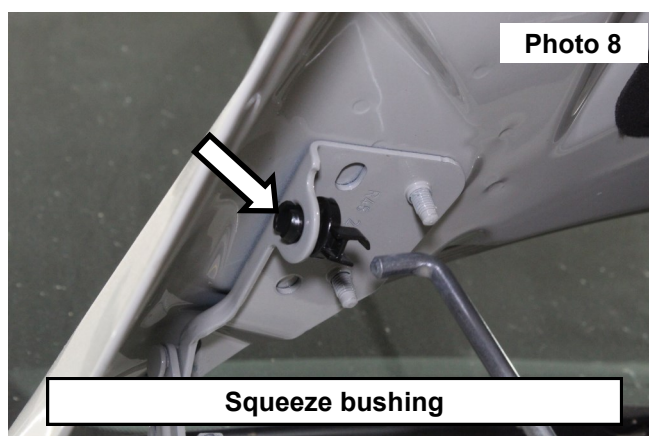
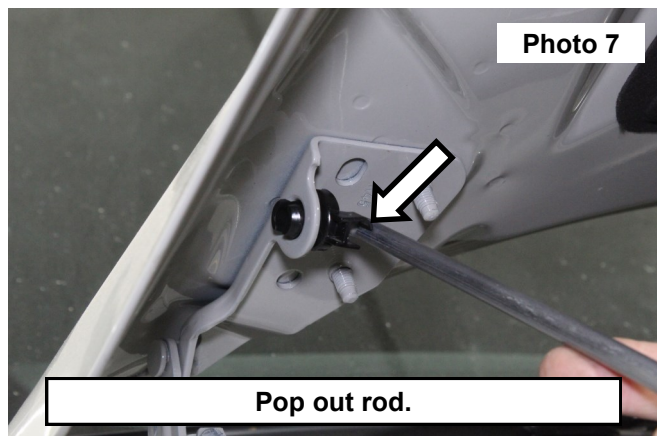
3. Place bushing in hood bracket. **See Photo 3.**
4. Insert ball pin into bushing and install 8mm washer and nut on ball pin, and tighten. **See Photo 4.**



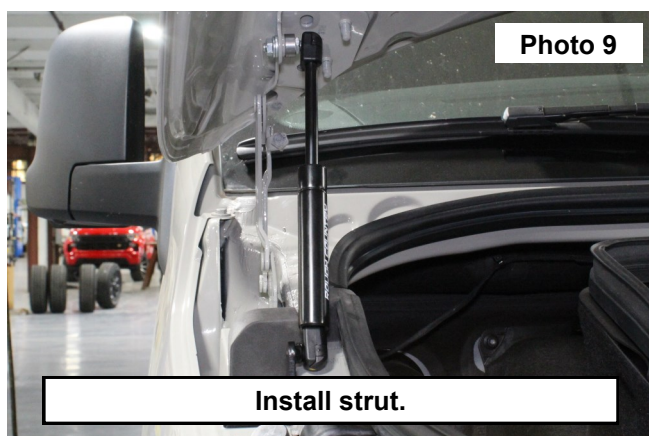
5. Press ball ends into strut. **See Photo 5&6.**



6. **Starting on PASS side.** Insure hood is supported. Using a pair of pliers, pop the hood prop out of OE bushing. **See Photo 7.**
7. Using pliers, squeeze and remove OE bushing from hood bracket. **See Photo 8**



8. Once OE bushing is removed, install frame bracket and hood mount bushing as before. **See Photo 9**
9. Install hood bushing and ball pin as before. **See Photo 10**
10. Lightly close hood to insure component clearance.



By purchasing any item sold by Rough Country, LLC, the buyer expressly warrants that he/she is in compliance with all applicable, State, and Local laws and regulations regarding the purchase, ownership, and use of the item. It shall be the buyers responsibility to comply with all Federal, State and Local laws governing the sales of any items listed, illustrated or sold. The buyer expressly agrees to indemnify and hold harmless Rough Country, LLC for all claims resulting directly or indirectly from the purchase, ownership, or use of the items.

