

ROUGH COUNTRY

SUSPENSION SYSTEMS®



WARNING: This product contains a chemical known to the State of California to cause Cancer and Reproductive Harm. For more information, go to www.P65Warnings.ca.gov.

2019-2025 JEEP JL HOOD SCOOP

PRIOR TO INSTALLATION

- A) Install the parts according to these written instructions with the hardware provided. **WARNING:** Failure to install according to these instructions will invalidate the warranty. This includes, but is not limited to, using alternative installation methods, hardware, or materials. **DO NOT USE:** Loctite, Superglue, or similar products on the hardware or the flares. *Install parts on cleaned vehicle surfaces.*
- B) **Fit:** Verify the fit of the parts to vehicle prior to installation (some filing, sanding, or cutting may be necessary to ensure proper fit).
- C) **Painting:** (Optional) if paint is desired it must be done prior to installing parts on vehicle. Clean outer surface with a good grade degreaser. **DO NOT USE LACQUER THINNER OR ENAMEL REDUCER AS A DEGREASER.** Wipe outer surface thoroughly with a tack rag prior to paint. Application of plastic adhesion promoter for TPO plastic as per your paint system manufacturer's recommendations is required. Paint parts using a high-quality enamel, or polyurethane automotive paint.
- D) **Metal Protection:** All exposed fasteners and bare metal should be treated with rust resistant paint **BEFORE** installing parts
- E) **Decals:** Parts may interfere with existing decals on vehicle. If you wish, remove decals prior to installation of parts.
- F) **Care & Cleaning:** Parts are built to last; any detergent you use to wash your vehicle is sufficient to clean the part. Do not use any harsh abrasive detergents.

TOOLS FOR EASY INSTALLATION:

- Soft Cloth or Alcohol Wipe
- Masking Tape

PLEASE READ: Manufacturer is not responsible for any damage, and the installation of our parts is done with the buyer's understanding that this scratching and paint wear may occur.

LIMITED LIFETIME WARRANTY AGAINST ANY MANUFACTURING DEFECTS: To claim warranty you must provide Proof of Purchase.

INCLUDED IN HARDWARE KIT:

1.



Alcohol Wipe
4 pcs

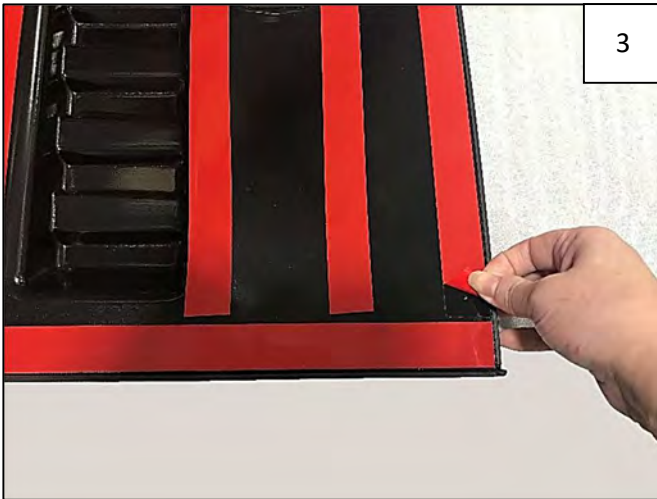
SECTION 1: HOOD SCOOP INSTALLATION



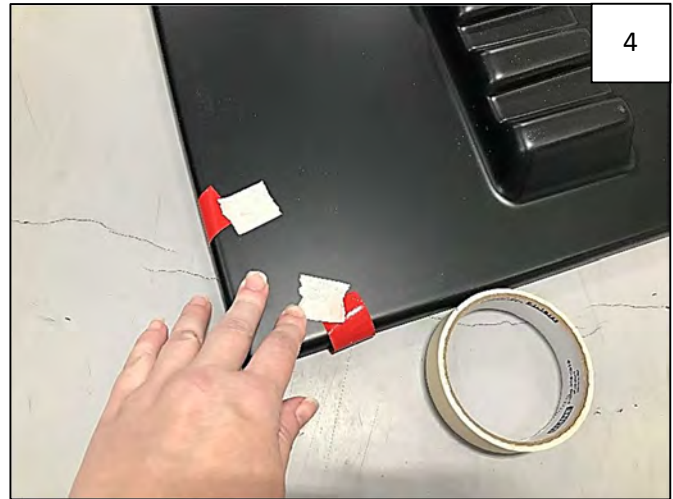
Vehicle surface must be free of dust and dirt and dry. Use supplied alcohol wipe to clean hood at areas of tape. Alternately: **Clean area with alcohol or degreaser.**



Before peeling any tape, place part carefully on hood to check and familiarize yourself with the fit. The two cutouts in the part will be centered around the washer fluid sprayers.



Remove part from hood and peel 2-3 inches from each long piece of tape around perimeter of part. Fold each liner around to the outward surface of the part.

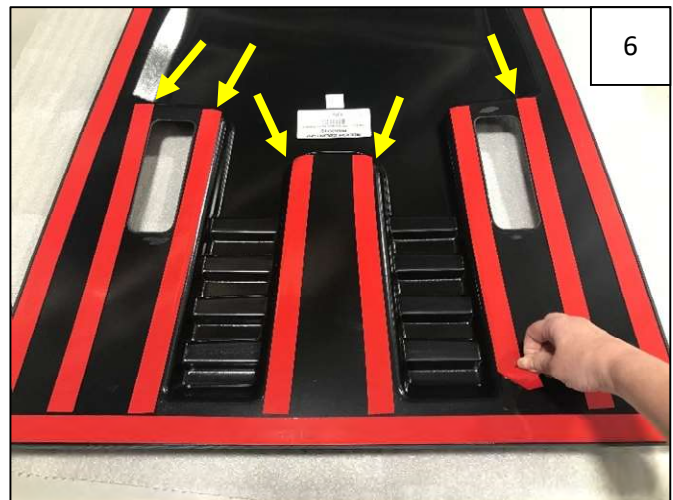


Use masking tape to secure tape leaders to outside of part.

0



Peel red liner completely from 2 short piece of tape at corners of part.



Peel red liner completely from 6 pieces of tape located in center of part.



Replace part on hood, slowly and carefully centering around washer fluid sprayers. **NOTE:** At this time, it is possible to adjust the part position before tape adhesion.



Lower part onto hood, maintaining position. Once the tape begins to contact the hood, adhesion is immediate. Press center of part to adhere center tape pads.



Begin pulling red tape leaders created in Step 3 one at a time, discarding masking tape. Carefully pull each tape leader at a 45-degree angle away from part to release from the tape, pressing against part as you go.



Press part against vehicle at areas of tape for 30 seconds to ensure full adhesion. Tape cures after 24 hours at 65 degrees.



Completed Hood Scoop Installation.

