



20-25 Jeep Gladiator Manual Bed Step

THANK YOU FOR CHOOSING ROUGH COUNTRY FOR ALL OF YOUR VEHICLE NEEDS.

Rough Country recommends a certified technician install this system. In addition to these instructions, professional knowledge of disassembly/reassembly procedures as well as post installation checks must be known. Attempts to install this system without this knowledge and expertise may jeopardize the integrity and/or operating safety of the vehicle. Please read instructions before beginning installation. Check the kit hardware against the parts list on this page and the product layout on the last page. Be sure you have all needed parts and know where they go. Also please review tools needed list and make sure you have needed tools.

⚠WARNING

PRODUCT USE INFORMATION

Rough Country makes no claims regarding lifting devices and excludes any and all implied claims. We will not be responsible for any product that is altered.

If questions exist we will be happy to answer any questions concerning the design, function, and correct use of our products.

⚠NOTICE

NOTICE TO DEALER AND VEHICLE OWNER

Any vehicle equipped with any Rough Country product should have a "Warning to Driver" decal installed on the inside of the windshield or on the vehicle's dash. The decal should act as a constant reminder for whoever is operating the vehicle of its unique handling characteristics. Re-torque all installed hardware as often as possible to ensure safe operation.

INSTALLING DEALER - it is your responsibility to install the warning decal and forward these installation instructions on to the vehicle owner for review. These instructions should be kept in the vehicle for its service



Torque Specs :

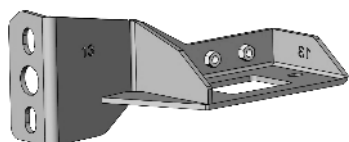
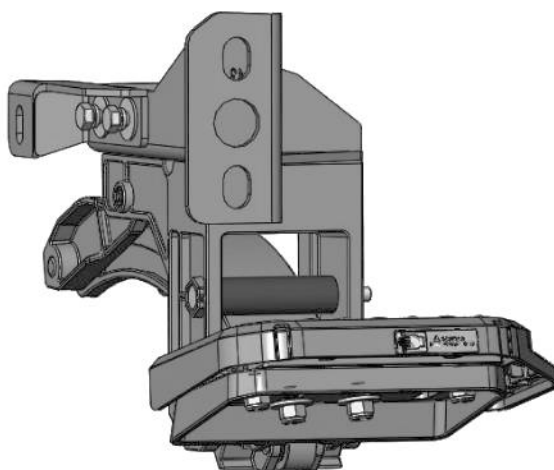
Size	Grade 5	Grade 8	Size	Class 8.8	Class 10.9
5/16"	15 ft/lbs	20ft/lbs	6MM	5ft/lbs	9ft/lbs
3/8"	30 ft/lbs	35ft/lbs	8MM	18ft/lbs	23ft/lbs
7/16"	45 ft/lbs	60ft/lbs	10MM	32ft/lbs	45ft/lbs
1/2"	65 ft/lbs	90ft/lbs	12MM	55ft/lbs	75ft/lbs
9/16"	95 ft/lbs	130ft/lbs	14MM	85ft/lbs	120ft/lbs
5/8"	135ft/lbs	175ft/lbs	16MM	130ft/lbs	165ft/lbs
3/4"	185ft/lbs	280ft/lbs	18MM	170ft/lbs	240ft/lbs



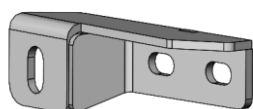
INSTALLATION INSTRUCTIONS

PARTS LIST:

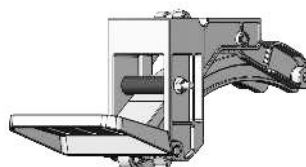
Description	Qty.	Description	Qty.
Corner Step Base Component	1	8-1.25mm x 25mm Combo Bolts	4
Step pad	1	8mm Nylon Lock Nuts	4
Main Mounting Bracket	1	8-1.25mm x 20mm T-Bolts	4
Support Bracket	1	12mm Flat Washers	2
12mm Double Bolt plate	1	8mm Lock Washer	1
Tubular Spacer	1	8-1.25mm x 20mm Hex Bolt	1
Plastic retainers	2	10mm Hex Nut	1
12mm Hex Nuts	2	10mm Flat Washers	2
8mm x 24mm x 2mm Flat Washers	5	10-1.50mm x 100mm Hex bolt	1
12mm Lock Washers	2	10mm Lock Washer	1



Main Mounting Bracket



Support Bracket



Corner Step Base Component



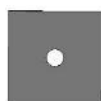
Step pad



Hex Bolt



Hex Nut



Plastic Retainer



Lock Washer



Flat Washer



Lock Nut



Double Bolt Plate



Tubular Spacer



Combo Bolt



T-Bolt



TOOLS REQUIRED



Ratchet



13mm Socket



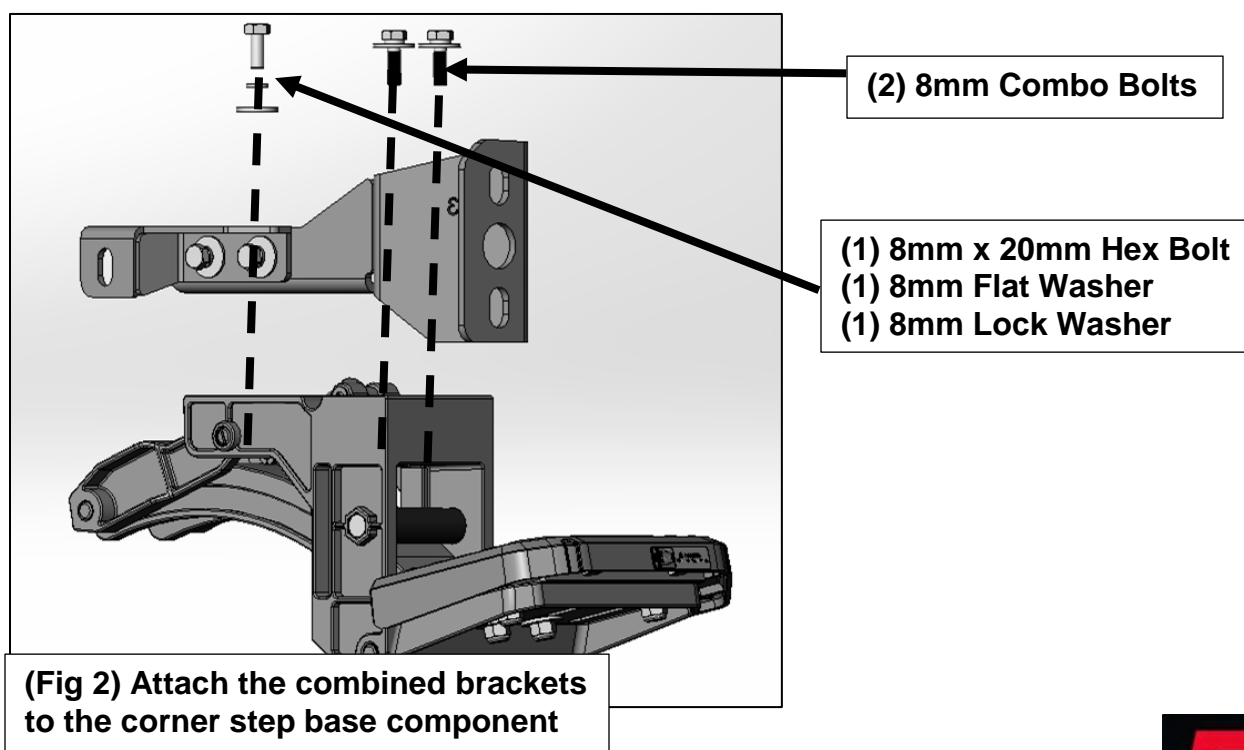
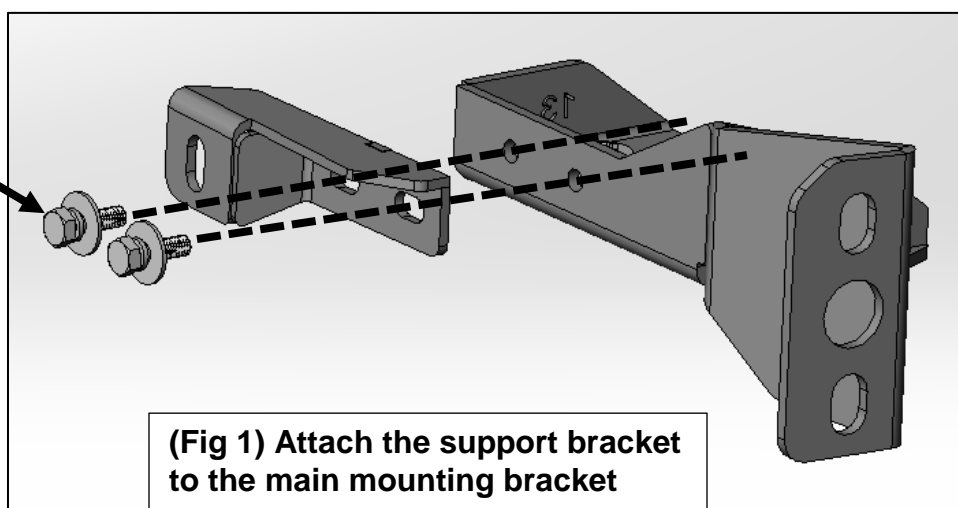
Extensions



Wrench

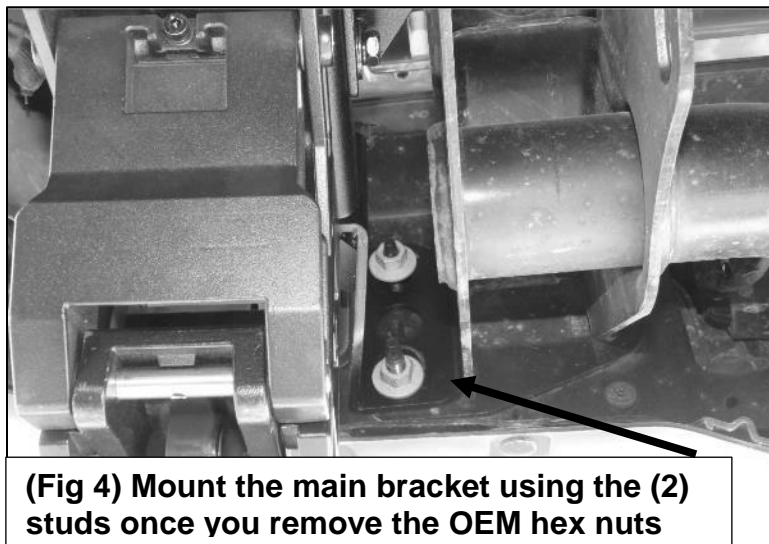
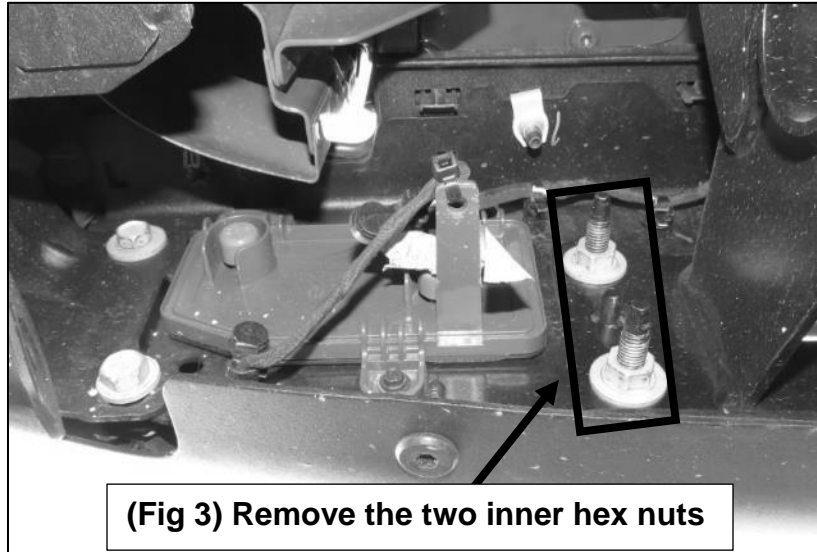
- 1 Follow (Fig 1 – 2) to attach the frame mounting bracket to the support bracket.

(2) 8mm combo bolts



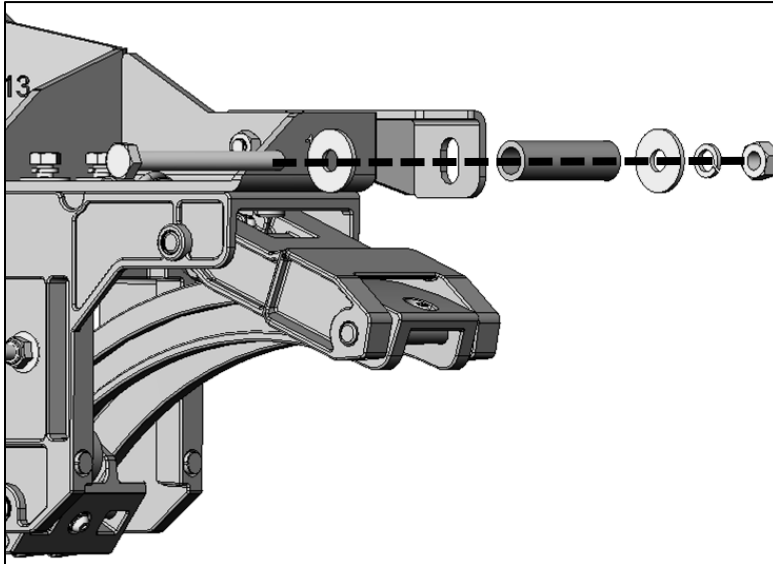
2

Follow (Fig 3 – 6) to install the combined brackets to the corner step base component to the vehicle.



Note: 12mm double bolt plate can be used or OEM studs (varies on bumper)





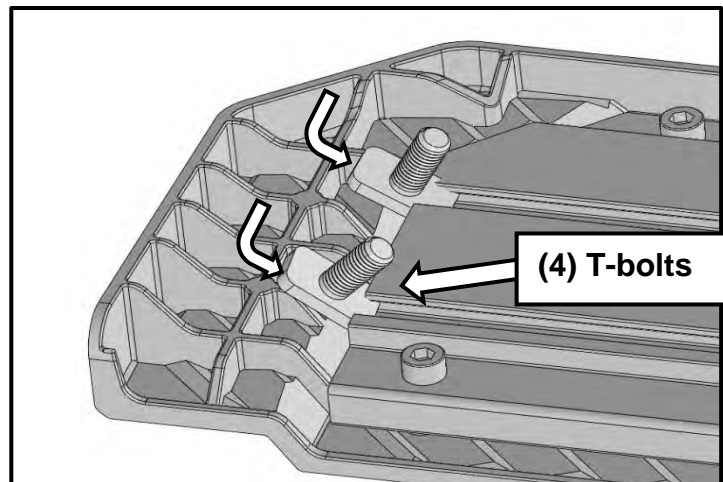
(Fig 6) Use following HW to install support bracket to frame

- (1) 10mm Tubular Spacer
- (1) 10mm x 100mm Hex Bolt
- (1) 10mm Flat Washer
- (1) 10mm Lock Washer
- (1) 10mm Hex Nut

3

Follow (Fig 7-9) to install the step pad to the linkage arm assembly. Once finished, **Tighten all hardware at this time to the preferred position.** Do periodic inspections to the installation to make sure that all hardware is secure and tight.

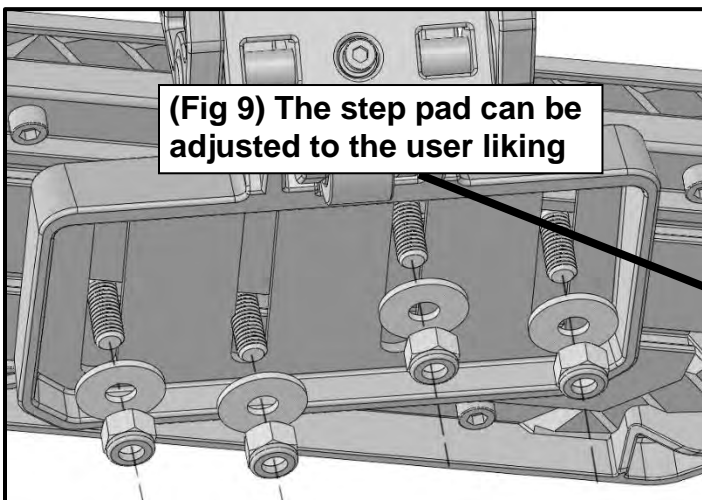
(Fig 7) Slide in T-bolts through open ends of the channels underside of Step Pad (two T-bolts per channel)



(Fig 8) Attach Step Pad to Corner Step Base



(Fig 9) The step pad can be adjusted to the user liking





By purchasing any item sold by Rough Country, LLC, the buyer expressly warrants that he/she is in compliance with all applicable, State, and Local laws and regulations regarding the purchase, ownership, and use of the item. It shall be the buyers responsibility to comply with all Federal, State and Local laws governing the sales of any items listed, illustrated or sold. The buyer expressly agrees to indemnify and hold harmless Rough Country, LLC for all claims resulting directly or indirectly from the purchase, ownership, or use of the items.