

ROUGH COUNTRY

SUSPENSION SYSTEMS®



WARNING: This product contains a chemical known to the State of California to cause Cancer and Reproductive Harm. For more information, go to www.P65Warnings.ca.gov.

2022-UP CHEVY SILVERADO 1500 TRADITIONAL STYLE FLARES

PRIOR TO INSTALLATION

- A) Install the flares according to these written instructions with the hardware provided. **WARNING:** Failure to install according to these instructions will invalidate the warranty. This includes, but is not limited to, using alternative installation methods, hardware, or materials. **DO NOT USE:** Loctite, Superglue, or similar products on the hardware or the flares. *Install flares on cleaned vehicle surfaces.*
- B) **Fit:** Verify the fit of the flares to vehicle prior to installation (some filing, sanding, or cutting may be necessary to ensure proper fit).
- C) **Painting:** (Optional) If paint is desired it must be done prior to installing flares on vehicle. Clean outer surface with a good grade degreaser. **DO NOT USE LACQUER THINNER OR ENAMEL REDUCER AS A DEGREASER.** Wipe outer surface thoroughly with a tack rag prior to paint. Application of plastic adhesion promoter for ABS plastic as per your paint system manufacturer's recommendations is required. Paint flares using a high-quality enamel, or polyurethane automotive paint. If painting edge trim (not recommended), use a flex additive.
- D) **Performance:** Using larger tires may increase the area required to turn the vehicle. Some tire/rim combinations may require lowering bump stops and or installing steering stops to prevent tire from contacting flare.
- E) **Exhaust System:** Modifications may be necessary to maintain a minimum 4" clearance between flares and exhaust pipes. (Exhaust gases should not vent directly onto flares)
- F) **Metal Protection:** All exposed fasteners and bare metal should be treated with rust resistant paint **BEFORE** installing flares. Spray inner fender wells with undercoating **AFTER** flare attachments have been completed.
- G) **Decals:** Flares may interfere with existing decals on vehicle. If you wish, remove decals prior to installation of flares.
- H) **Care & Cleaning:** Fender flares are built to last; any detergent you use to wash your vehicle is sufficient to clean the flare. Do not use any harsh abrasive detergents.

TOOLS FOR EASY INSTALLATION:

- Soft Cloth or Alcohol Wipe
- Socket Wrench
- 10mm socket
- T15 Torx Bit
- Grease Pencil
- Utility Knife
- Pliers

PLEASE READ: Dirt and debris can become lodged between the fender flares and the vehicle's fenders, causing scratching and paint wear from vibration. Manufacturer is not responsible for any damage, and the installation of our fender flares is done with the buyer's understanding that this scratching and paint wear may occur.

LIMITED LIFETIME WARRANTY AGAINST ANY MANUFACTURING DEFECTS: To claim warranty you must provide Proof of Purchase.

INCLUDED IN HARDWARE KIT:

1.



Push-In Pocket
Hardware, Brushed
Metal
44 pcs

2.



Push-In Pocket
Hardware, Black
44 pcs

3.



Short "U" Clip
8 pcs

4.



Long "U" Clip
6 pcs

5.



#10 Truss-Head
Screw
14 pcs

6.



Foam Tabs
6 pcs

7.



Wiper Style Edge
Trim
358 inches



IF YOU PURCHASED GLOSSY BLACK FLARES (CODE "RCGB"):



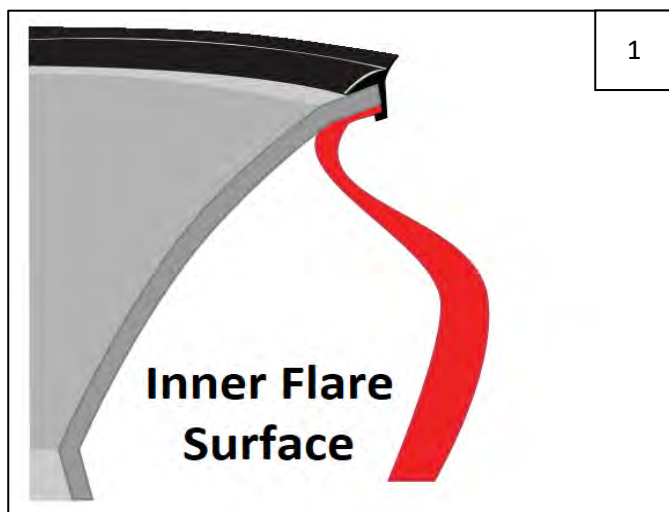
Prior to beginning installation process, peel the protective liner from each plastic piece included in the flare kit – all flares and inner pieces.

NOTE: It will be difficult to remove liner once edge trim and hardware are installed.

Once liner is removed, take care not to scratch flare surfaces. If flare needs to be cleaned, wipe gently with a clean soft cloth.



SECTION 1: EDGE TRIM INSTALLATION



Peel 2-3 inches of red vinyl backing away from supplied edge trim tape. Applying the adhesive side of the edge trim to the inner side of the flare, affix the edge trim to the top edge of the flare (the portion that comes in contact with the side of the vehicle).

Press edge trim into place along the top edge of the flare in one-foot increments, pulling red vinyl backing free as you continue to work your way around the top edge of the flare. Trim edge trim flush with ends of flare.

SECTION 2: PUSH-IN POCKET HARDWARE INSTALLATION



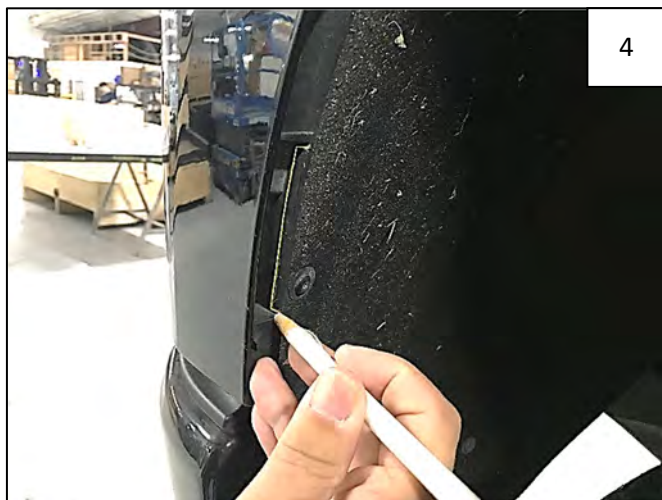
Peel liner from tape on Push-In Pocket Hardware (brushed metal or black as preferred). NOTE: There will be extra Push-In Pocket Hardware.



Insert Push-In Pocket Hardware into each flare pocket hole (on outer flare surface, 8 places each front flare, 9 places each rear). Push in to engage clip and tape adhesion.

SECTION 3: CUTTING VENT – FOR 2022 ONLY

If your vehicle is a 2023 model, please proceed to Step 8.



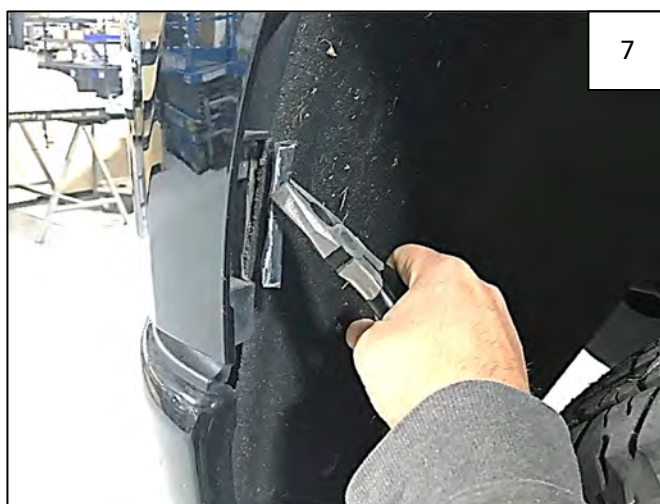
Using a grease pencil, mark vent from lower center rib down to boss feature at bottom, approximately 3/8" in from edge (where the pencil meets the inner formed features on vent) as shown. Make a mark toward inside of vent at either end, aligning with formed in bosses.



Using a Utility Knife, make a score along grease pencil mark made in Step 4. Make a deeper cut at the second pass.



Use pliers to "break" the cut piece away from the vent, using the knife where needed to further cut the plastic.



This step shows the cut piece fully removed from the vent. Discard this piece.

SECTION 4: FRONT FLARE INSTALLATION



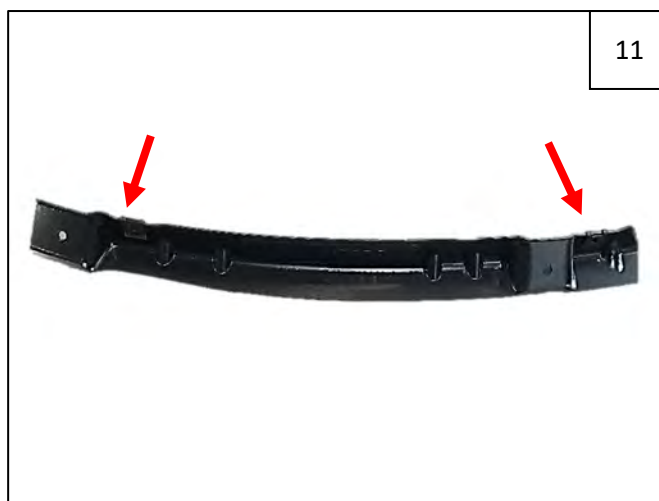
Using a T15 Torx bit, remove 3 factory fasteners indicated by arrows holding the factory mud flap on. Retain all screws.



Using a 10mm socket, remove 1 factory bolt from mud flap indicated by arrow. Remove mud flap by pulling firmly away from vehicle body (a hidden clip will disengage).



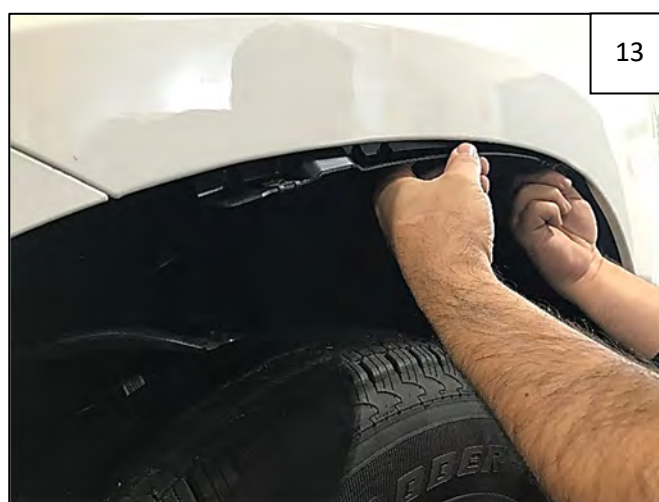
Attach 2 supplied Short "U" Clips to the supplied Top Inner Bracket as shown.



Top Inner Bracket Short "U" Clip locations.



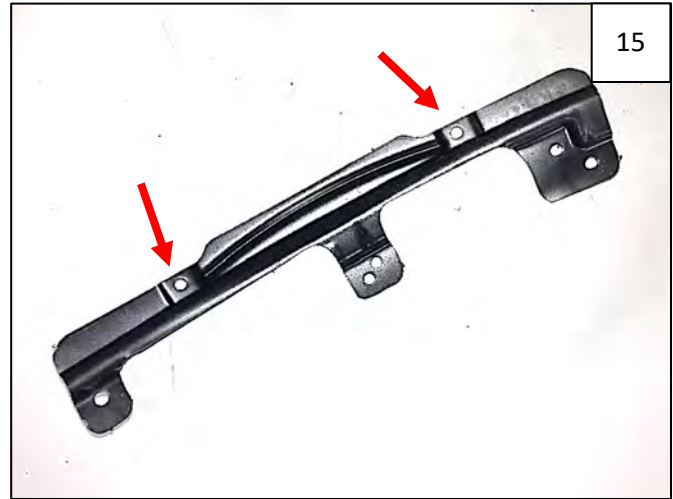
Remove 2 factory T15 Torx screws at top of wheel well as shown. Retain.



Install Top Inner Bracket using 2 T15 Torx screws retained in Step 12. Tighten both fasteners. **NOTE:** Driver Side bracket is marked with LH, Passenger Side is RH.



Attach 2 supplied Short "U" Clips to the supplied Front Inner Bracket as shown.



Front Inner Bracket Short "U" Clip locations.



Remove 3 T15 Torx bolts from front bumper in locations shown by arrows. Retain bolts for use in Step 17.



Install Front Inner Bracket on fender using 3 Torx bolts removed in Step 16, starting with uppermost bolt.

NOTE: Lower two holes will depend on the model year of the vehicle. Install bolts through holes that correspond with factory holes.



Align flare on vehicle and start 4 supplied Truss-Head Screws through holes in flare and into fender as shown.

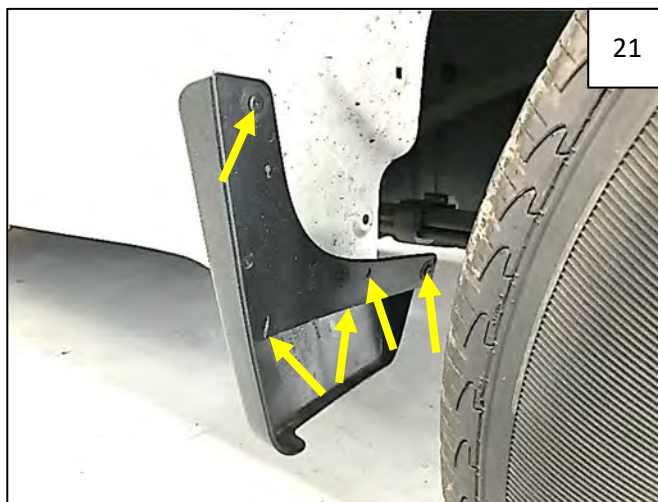


Start 2 factory T15 Torx screws at bottom rear of wheel well as shown. Apply pressure to flare towards vehicle body at each fastening point and tighten all fasteners.

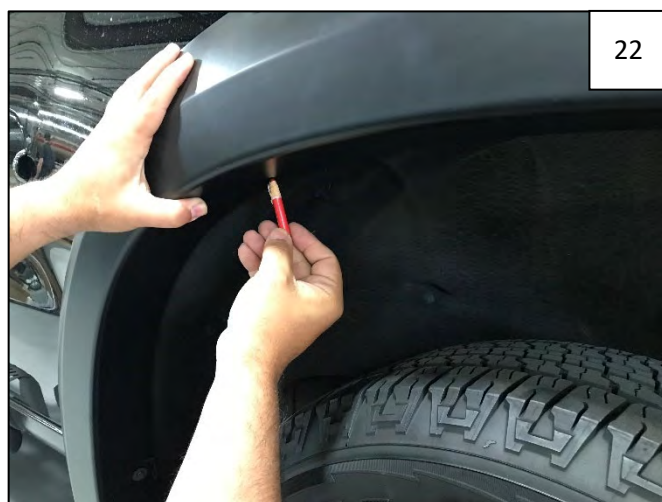
SECTION 5: REAR FLARE INSTALLATION



Remove 1 factory T15 Torx screw on rear splash guard. Retain all factory screws; some will be used.



Remove 5 factory screws from the front splash guard. Splash guard is held on with a hidden clip – to remove, pull splash guard firmly from vehicle.



Align the flare on the fender and mark 3 holes using a grease pencil.



Hole locations.



Peel liner from a supplied Foam Tab and center tab over each mark made in Step 22; fold each tab over lip of wheel well.



Slide a supplied Long "U" Clip over each Foam Tab, making edge of clip flush with outer edge of wheel well lip as shown.



Hold flare on fender. Start 3 factory screws removed in Steps 20 and 21 as shown.



Start 3 supplied Truss-Head Screws through upper holes in flare and into clips installed in Step 25. Apply pressure to flare towards vehicle body at each fastening point and tighten all fasteners.