

Ford 2021-UP F-150 5.0L Cold Air Intake

Thank you for choosing Rough Country for all your vehicle needs.

Please read instructions before beginning installation. Check the kit hardware against the kit contents shown below. Be sure you have all needed parts and know where they go.

If question exist, please call us @1-800-222-7023. We will be happy to answer any questions concerning this product.

Check all fasteners for proper torque. Check to ensure for adequate clearance between all components.

Periodically check all hardware for tightness.

KIT CONTENTS:

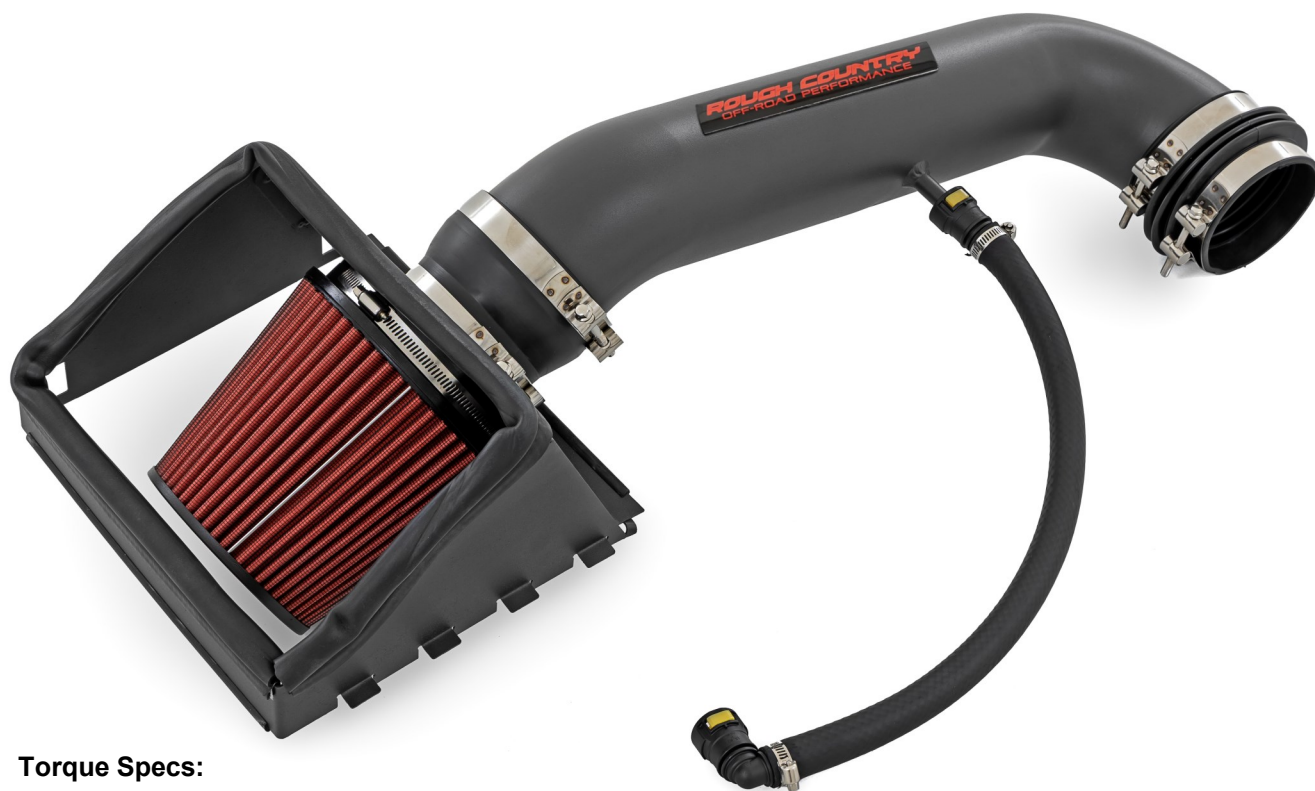
Air Filter x1
Filter Adapter x1
Flex Tube x1
Rubber Gasket x1
Intake Tube x1
Heat Shield x1
Breather Tube x1
90Deg. Quick Connector x1
Quick Connector x1

TOOLS NEEDED:

4mm Allen wrench
Flat Bit Driver
Razor Knife

HARDWARE INCLUDED:

Filter Clamp x1
Coupler Clamps x4
M6 Flat Washer x2
M6 Lock Washers x2
M6 x 12mm Bolts x2
#10 Hose Clamps x2

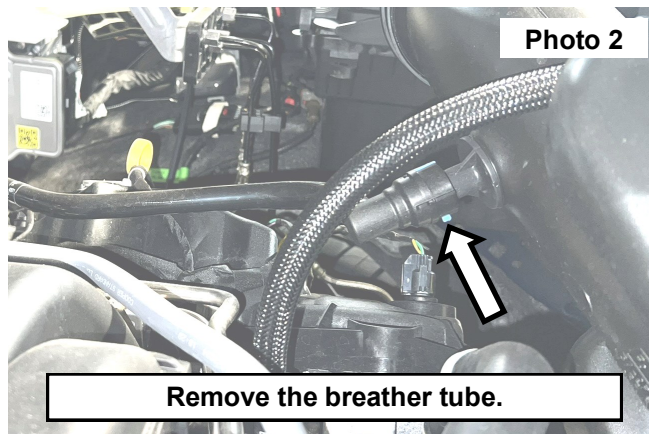
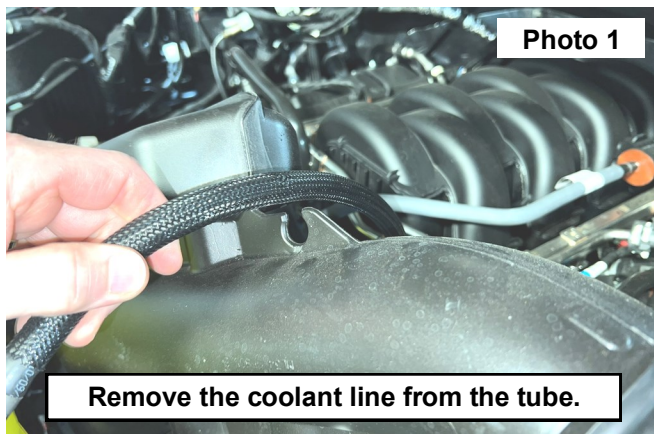


Torque Specs:

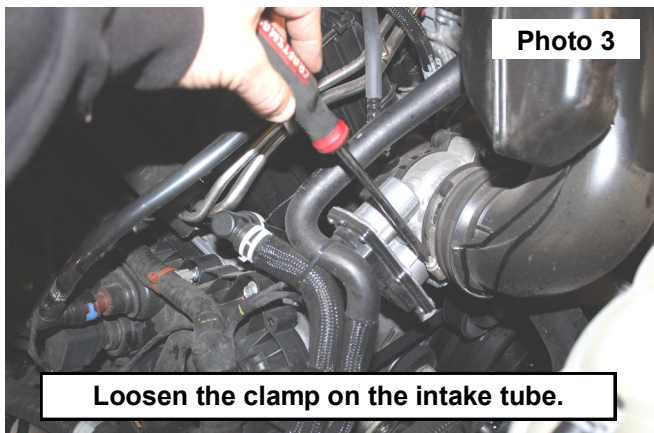
Size	Grade 5	Grade 8	Size	Class 8.8	Class 10.9
5/16"	15 ft/lbs	20ft/lbs	6MM	5ft/lbs	9ft/lbs
3/8"	30 ft/lbs	35ft/lbs	8MM	18ft/lbs	23ft/lbs
7/16"	45 ft/lbs	60ft/lbs	10MM	32ft/lbs	45ft/lbs
1/2"	65 ft/lbs	90ft/lbs	12MM	55ft/lbs	75ft/lbs
9/16"	95 ft/lbs	130ft/lbs	14MM	85ft/lbs	120ft/lbs
5/8"	135ft/lbs	175ft/lbs	16MM	130ft/lbs	165ft/lbs
3/4"	185ft/lbs	280ft/lbs	18MM	170ft/lbs	240ft/lbs

INSTALLATION INSTRUCTIONS

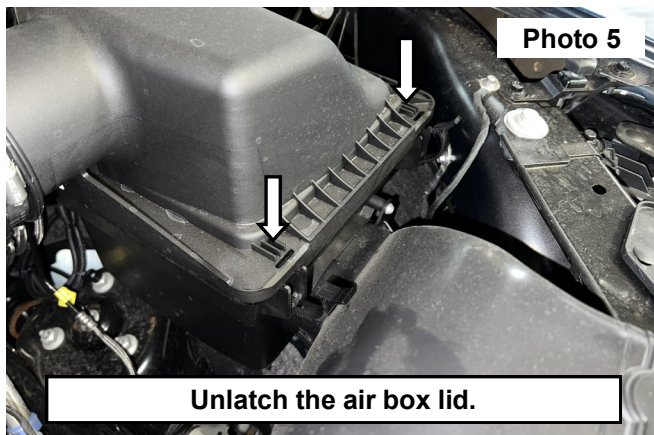
1. Release and remove the coolant line from the intake tube. **See Photo 1.**
2. Release the breather tube from the back of the intake tube. **See Photo 2.**



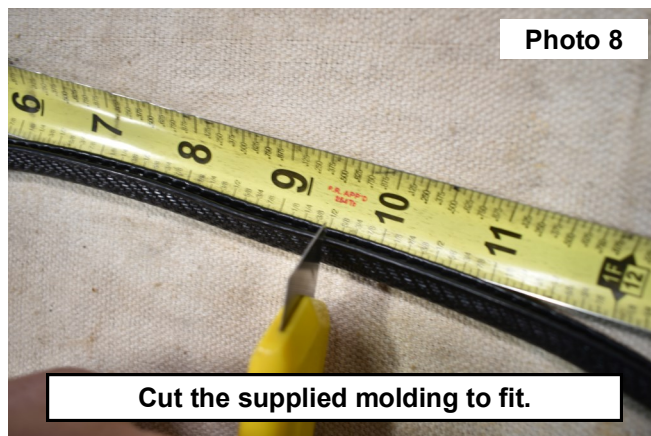
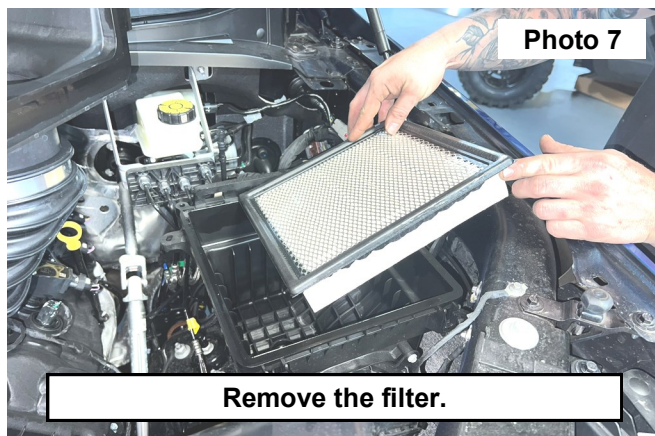
3. Loosen the throttle body intake tube clamp using a flat bit driver. **See Photo 3.**
4. Remove the intake tube from the throttle body. **See Photo 4.**



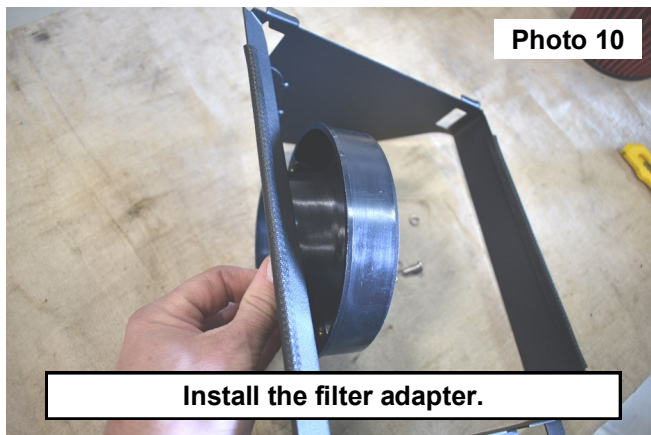
5. Open the (2) air box clamps. **See Photo 5.**
6. Slide the lid out of the top of the filter box and remove the lid and intake lid from the vehicle. **See Photo 6.**



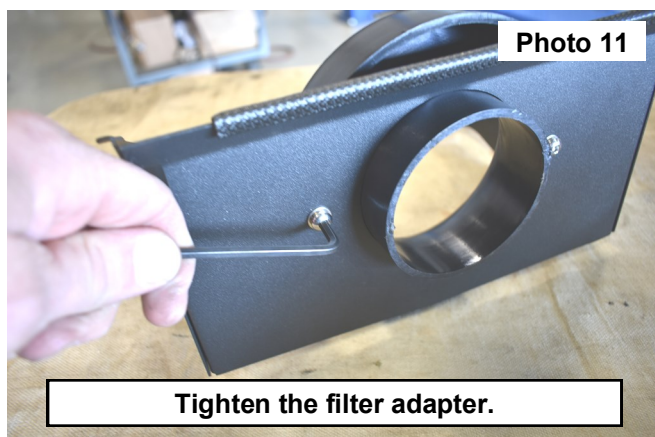
7. Remove the filter from the air box. **See Photo 7.**
8. Cut the supplied molding to fit the new air box shield. **See Photo 8.**



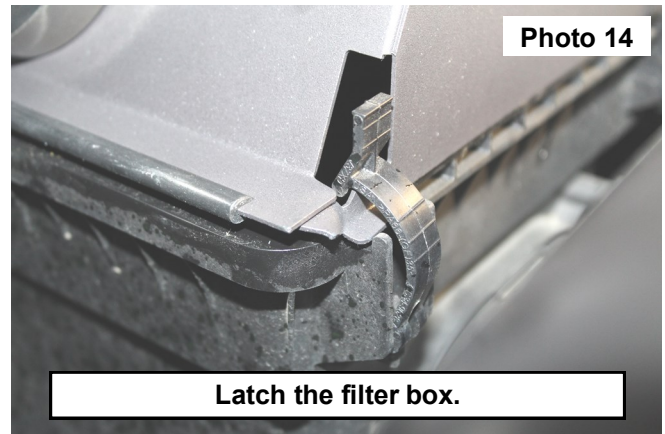
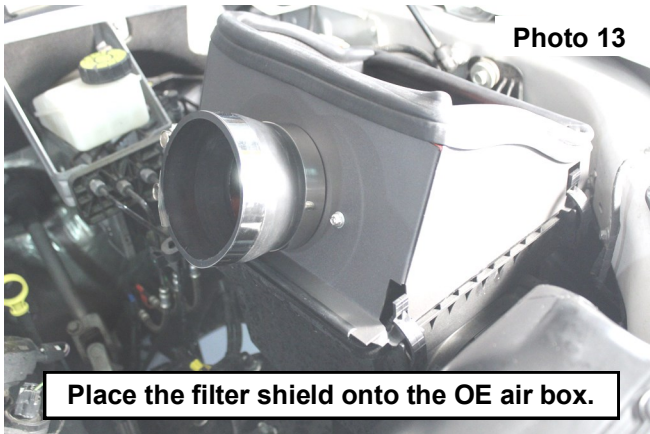
9. Install the rubber gasket on the shield as shown. **See Photo 9.**
10. Install the filter adaptor on the shield as shown using the supplied 6mm x 16mm button head bolts, lock washers and flat washers. **See Photo 10 & 11.** Tighten using a 4mm Allen wrench.



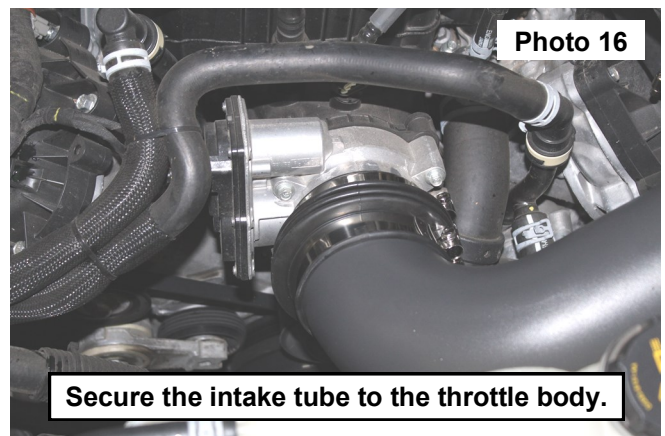
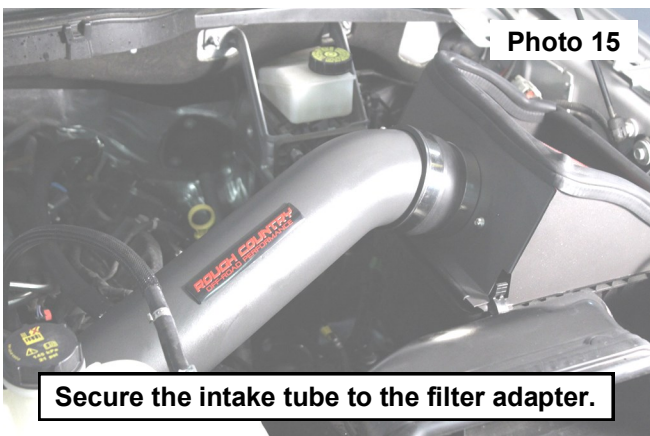
10. Install the filter as shown in Photo 12. Secure with the supplied filter clamp and tighten with a flat head screwdriver.



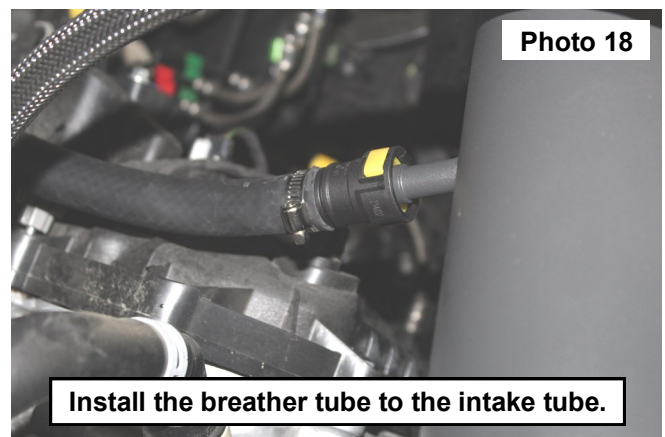
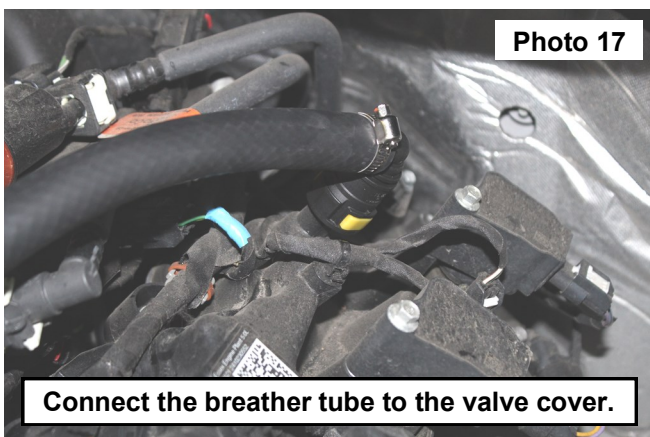
11. Place the filter shield onto the OE air box. **See Photo 13.**
12. Latch the (2) clamps over the installed filter shield. **See Photo 14.**



13. Install the intake tube and rubber adapter onto the filter adapter, using (2) of the larger clamps. **See Photo 15.**
14. Secure the intake tube to the throttle body using the supplied flex tube and (2) large clamps. **See Photo 16.**
15. Tighten all clamps using a flat bit driver.



16. Install the breather tube to the valve cover, then to the back of the intake tube. **See Photos 17 and 18.**



By purchasing any item sold by Rough Country, LLC, the buyer expressly warrants that he/she is in compliance with all applicable, State, and Local laws and regulations regarding the purchase, ownership, and use of the item. It shall be the buyers responsibility to comply with all Federal, State and Local laws governing the sales of any items listed, illustrated or sold. The buyer expressly agrees to indemnify and hold harmless Rough Country, LLC for all claims resulting directly or indirectly from the purchase, ownership, or use of the items.

