

JEEP JK / JL / JT 3.5"-6" LIFT SWAY BAR DISCONNECT

Thank you for choosing Rough Country for all your vehicle needs.

Please read instructions before beginning installation. Check the kit hardware against the kit contents shown below. Be sure you have all needed parts and know where they go.

If question exist, please call us @1-800-222-7023. We will be happy to answer any questions concerning this product.

Check all fasteners for proper torque. Check to ensure for adequate clearance between all components.

Check and retighten wheels at 50 miles and again at 500 miles. Periodically check all hardware for tightness.

KIT CONTENTS:

Dr Frame Bracket x1
 Pass Frame Bracket x1
 5/16" x 1" Self Tap Bolt x4
 Link Body x2
 Link End x2
 Mounting Pins x2
 1/2" Nut x2
 1/2" Flat Washer x2
 12mm Jam Nut x2
 12mm Lock Nut x2
 Hitch Pin x2

TOOLS NEEDED:

13mm Socket/Wrench
 16mm Socket / Wrench
 18mm Socket / Wrench
 19mm Socket / Wrench
 21mm Wrench
 Small Phillips Screwdriver
 17/64" Drill Bit
 Drill Motor
 Center punch
 Cut Off Wheel
 Paint Marker

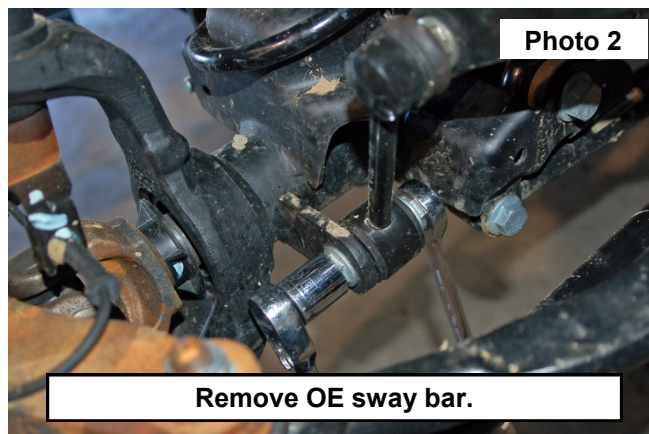


Torque Specs:

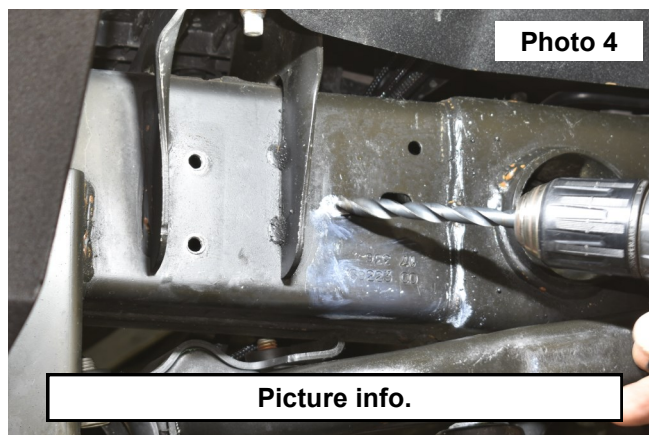
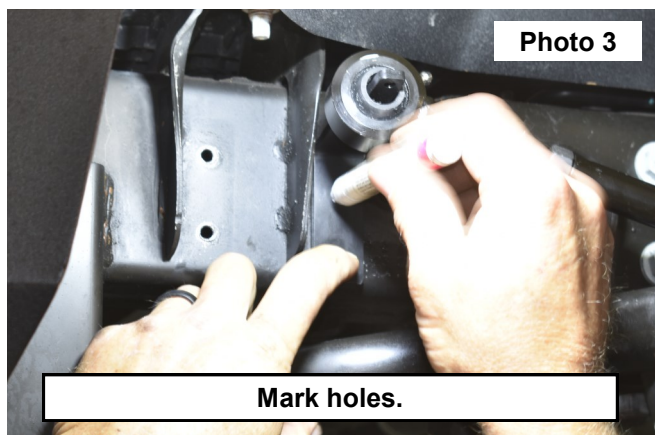
| Size | Grade 5 | Grade 8 | Size | Class 8.8 | Class 10.9 |
|-------|-----------|-----------|------|-----------|------------|
| 5/16" | 15 ft/lbs | 20ft/lbs | 6MM | 5ft/lbs | 9ft/lbs |
| 3/8" | 30 ft/lbs | 35ft/lbs | 8MM | 18ft/lbs | 23ft/lbs |
| 7/16" | 45 ft/lbs | 60ft/lbs | 10MM | 32ft/lbs | 45ft/lbs |
| 1/2" | 65 ft/lbs | 90ft/lbs | 12MM | 55ft/lbs | 75ft/lbs |
| 9/16" | 95 ft/lbs | 130ft/lbs | 14MM | 85ft/lbs | 120ft/lbs |
| 5/8" | 135ft/lbs | 175ft/lbs | 16MM | 130ft/lbs | 165ft/lbs |
| 3/4" | 185ft/lbs | 280ft/lbs | 18MM | 170ft/lbs | 240ft/lbs |

INSTALLATION INSTRUCTIONS

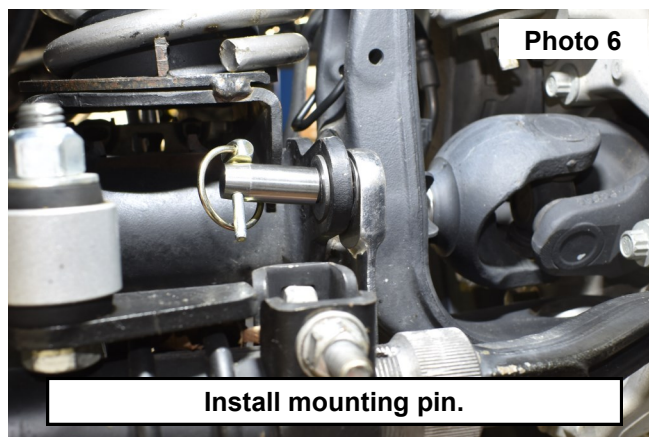
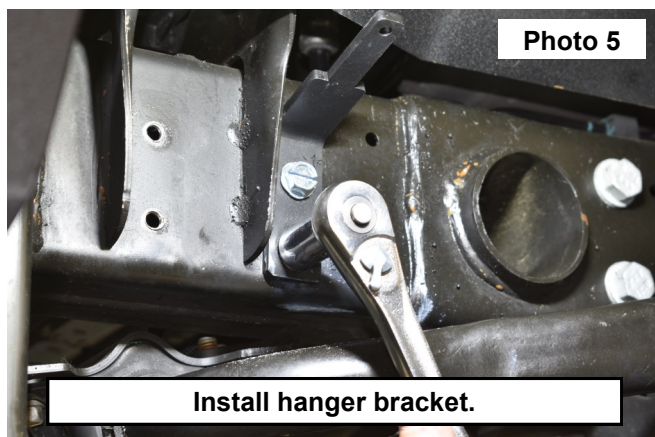
1. Adjust sway bar to approx. 11" measuring end to end. Tighten the end and jam nut with 19mm socket or wrench. **See Photo 1.**
2. Remove OE sway bar links from the axle and sway bar using a 21mm wrench on sway bar end and 18mm socket on axle side. **See Photo 2.**



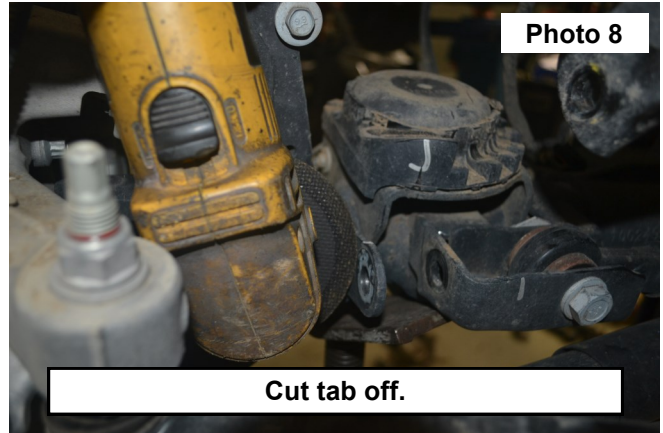
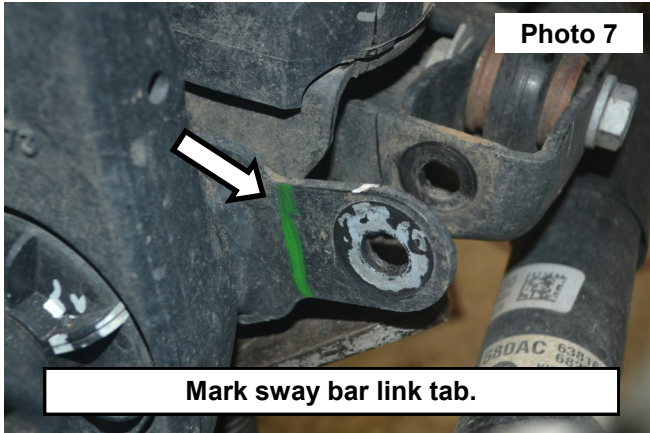
3. Install link to sway bar and place on bracket. Place bracket on the frame and mark holes using a paint marker. **See Photo 3.**
4. Using a 17/64 bit and motor, drill holes in marked locations. **See Photo 4.**



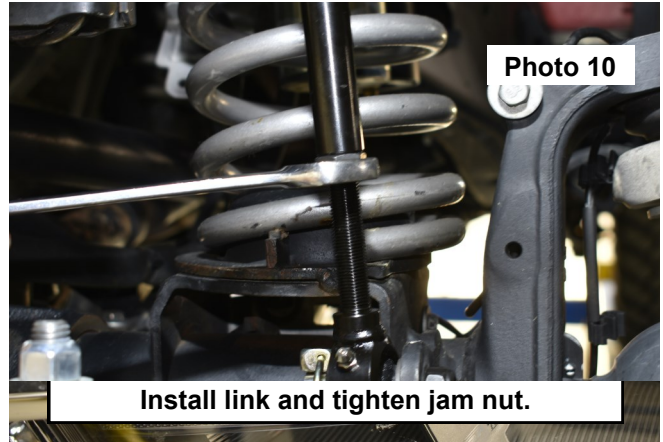
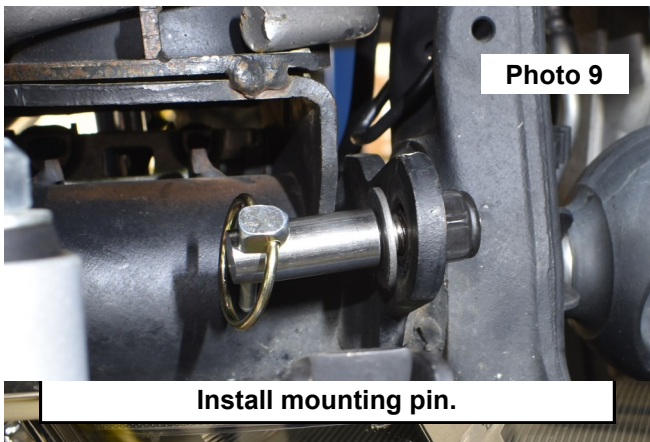
5. Using a 13mm socket or wrench, tighten hanger bracket with (2) self tapping bolts. **See Photo 5.**
6. For JL models, skip to step 8.
7. JK models, install mounting pin to axle using a 19mm socket. **See Photo 6.**



8. Using a paint marker, make a cut line as close to the axle as possible onto sway bar link tab. **See Photo 7.**
9. With a cut off wheel, remove sway bar link tab sanding any sharp edges. Use color match paint to prevent any rust. **See Photo 8.**



10. Using a 19mm, attach the mounting pin to axle. Using the pin or small screwdriver, place into mounting pin to keep mounting pin from rotating. **See Photo 9.**
11. Install link onto mounting pin and tighten the jam nut using a 19mm wrench. **See Photo 10.**



By purchasing any item sold by Rough Country, LLC, the buyer expressly warrants that he/she is in compliance with all applicable, State, and Local laws and regulations regarding the purchase, ownership, and use of the item. It shall be the buyers responsibility to comply with all Federal, State and Local laws governing the sales of any items listed, illustrated or sold. The buyer expressly agrees to indemnify and hold harmless Rough Country, LLC for all claims resulting directly or indirectly from the purchase, ownership, or use of the items.

