

## 19-24 Ram 1500 Tubular Front Bumper Skid Plate and Light Hoop Kit

**Thank you for choosing Rough Country for all your vehicle needs.**

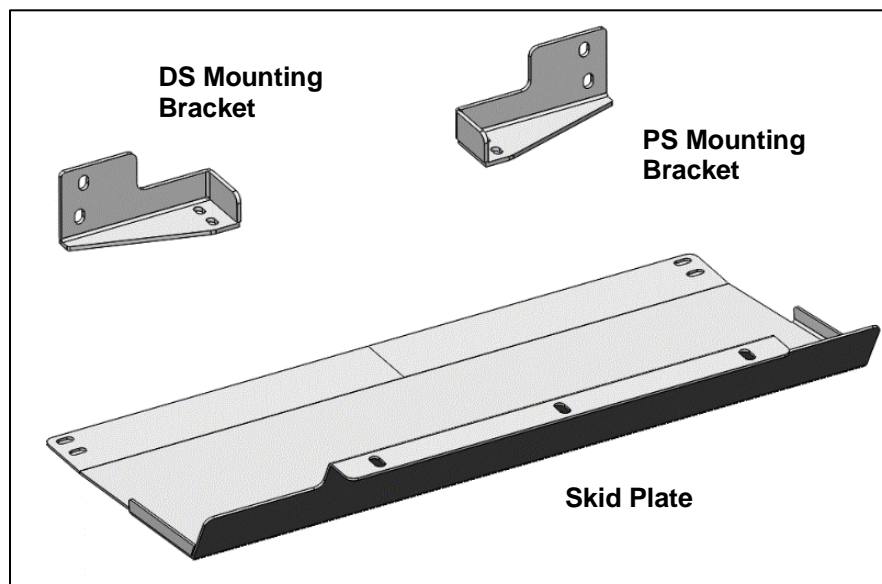
Please read instructions before beginning installation. Check the kit hardware against the kit contents shown below. Be sure you have all needed parts and know where they go.

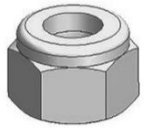
If question exist, please call us @1-800-222-7023. We will be happy to answer any questions concerning this product. Check all fasteners for proper torque. Check to ensure for adequate clearance between all components. Periodically check all hardware for tightness.

### Skid Plate Mounting Instruction

#### PARTS

Qty	Item Description
1	Skid plate
1	DS/Left Mounting Bracket
1	RS/Right Mounting Bracket
1	Allen Wrench S=6
4	8mm x 25mm Hex Combo Bolts
4	8mm Nylon Lock Nuts
8	8mm x 24mm x 2mm Flat Washers
3	10mm x 30mm x 2.5mm Flat Washers
3	10mm x 25mm Button Head Bolts
4	8mm Hex Lock Nuts
3	10mm Lock Washers





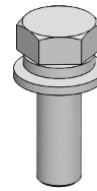
Lock  
Nut



Lock  
Washer



Flat  
Washer



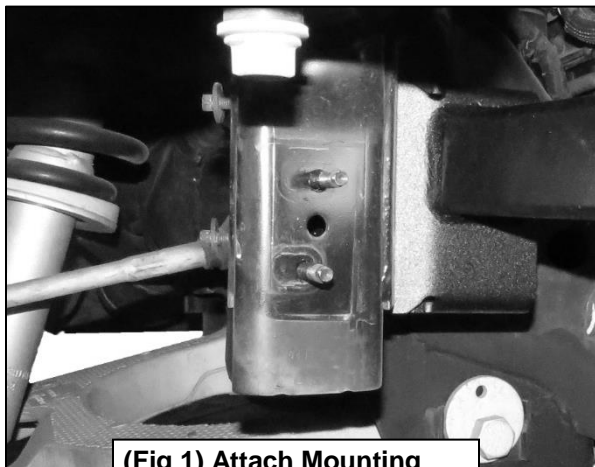
Combo  
Bolt



Button  
Head Bolt

1

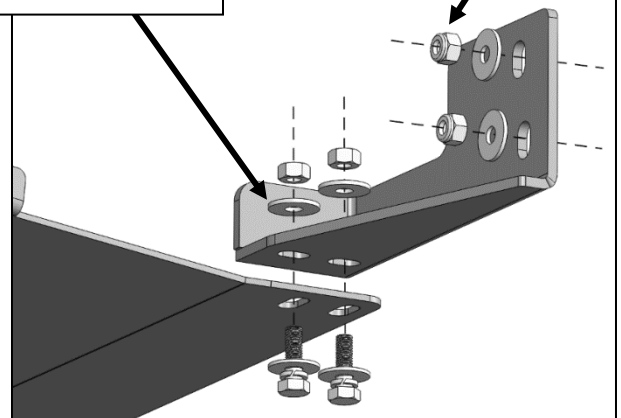
Follow (Fig 1 – 5) to attach Support Bracket and Skid Plate. Ensure fasteners are only hand tight at this point.

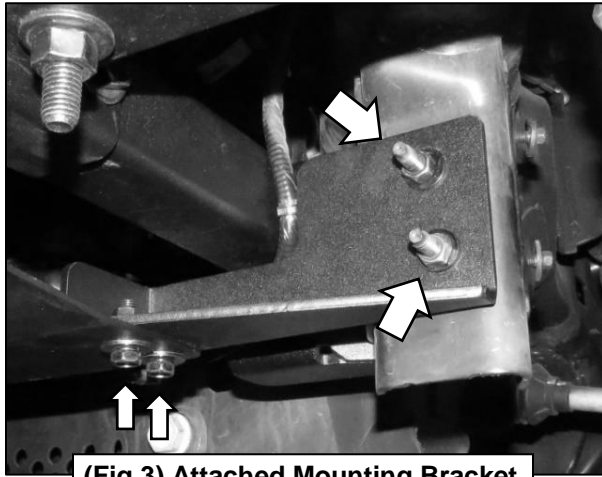


(Fig 1) Attach Mounting  
Bracket to Mounting Studs

(2) 8mm Combo Bolt  
(2) 8mm Flat Washer  
(2) 8mm Hex Nut

(2) 8mm Flat Washer  
(2) 8mm Lock Nut





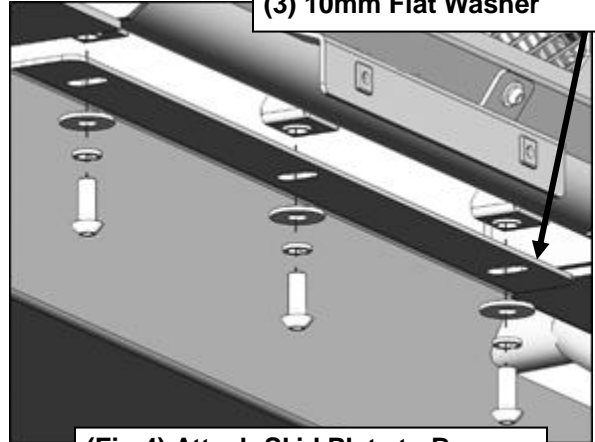
(Fig 3) Attached Mounting Bracket



(Fig 5) Attached Skid Plate

(Fig 2) Attach Mounting Bracket to Vehicle using factory hardware, then Skid Plate to Mounting Bracket

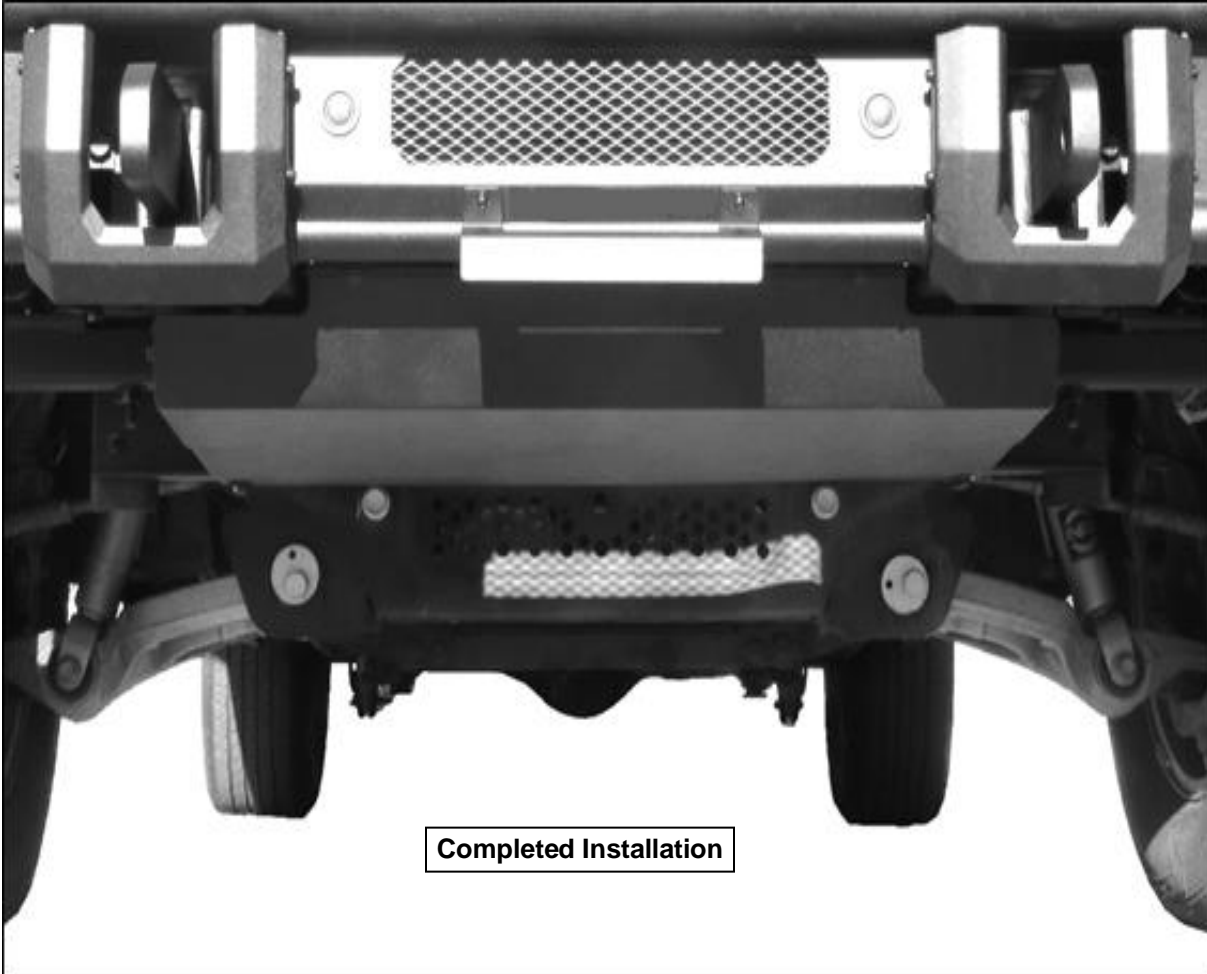
- (3) 10mm Button Head Bolt
- (3) 10mm Lock Washer
- (3) 10mm Flat Washer



(Fig 4) Attach Skid Plate to Bumper

**2**

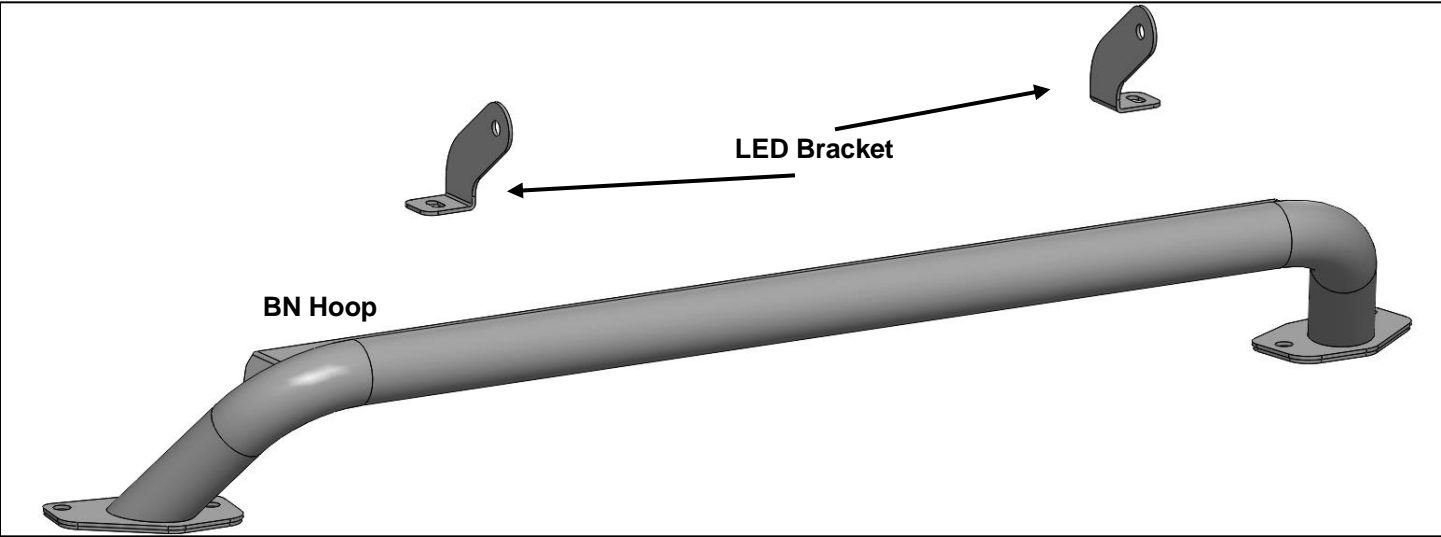
Ensure Skid Plate is level, then tighten all fasteners completely. At this point, installation is complete. Do periodic inspections of the installation to make sure that all hardware is secure and tight.



**LD Hoop Mounting Instruction**

**PARTS LIST:**

Qty	Item Description	Qty	Item Description
1	Light Hoop	8	8mm Lock Washers
1	PS/right LED Bracket	2	8-1.25mm x 25mm Hex Bolt
1	DS/left LED Bracket	2	8-1.25mm x 16mm Hex Bolt
4	8-1.25mm x 25mm Button Head Allen Bolt	1	5mm Allen Wrench
14	8mm x 24mm x 2mm Flat Washers	6	8mm Hex Nuts



**TOOLS REQUIRED**



**Ratchet**



**13mm Socket**

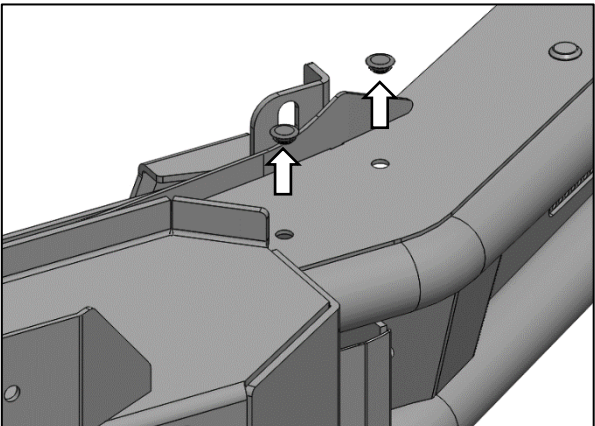


**Extensions**



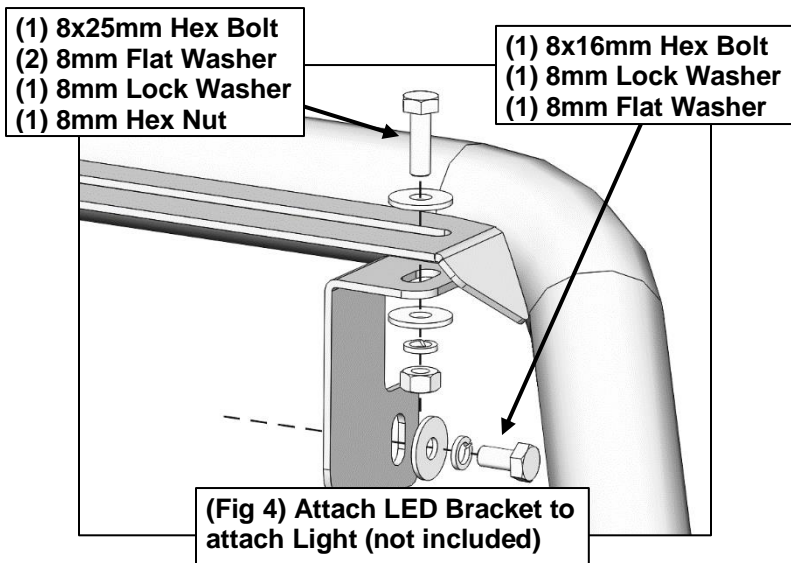
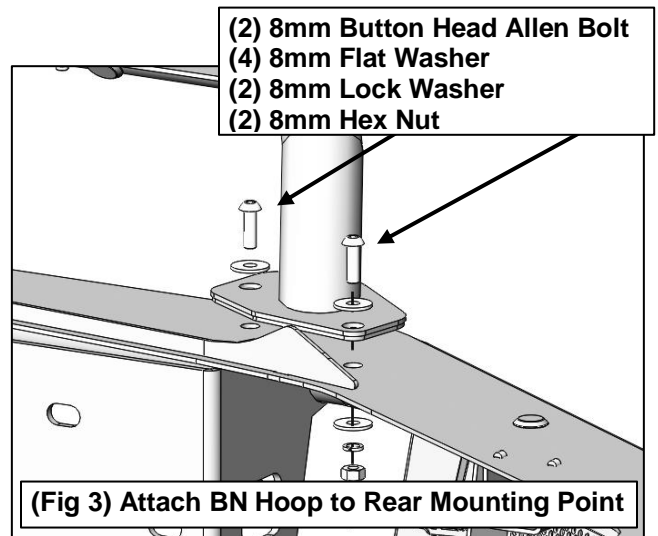
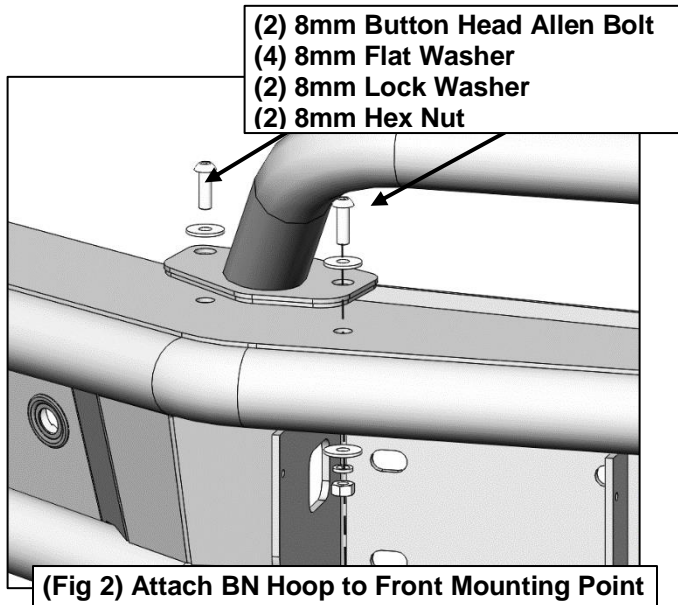
**Wrench**

- 1
- Follow (Fig 1 – 3) to attach BN Hoop to HD Bumper, then attach LED Brackets and LED Light as necessary. Ensure BN Hoop is level before tightening fasteners.



**(Fig 1) Remove plugs from inserts on top of Bumper**







By purchasing any item sold by Rough Country, LLC, the buyer expressly warrants that he/she is in compliance with all applicable, State, and Local laws and regulations regarding the purchase, ownership, and use of the item. It shall be the buyers responsibility to comply with all Federal, State and Local laws governing the sales of any items listed, illustrated or sold. The buyer expressly agrees to indemnify and hold harmless Rough Country, LLC for all claims resulting directly or indirectly from the purchase, ownership, or use of the items.

