

# ROUGH COUNTRY

## SUSPENSION SYSTEMS®

### Ram 2500 / 3500-150 2WD/4WD (2019-2025) Manual Bed Step

#### THANK YOU FOR CHOOSING ROUGH COUNTRY FOR ALL OF YOUR VEHICLE NEEDS.

Rough Country recommends a certified technician install this system. In addition to these instructions, professional knowledge of disassembly/reassembly procedures as well as post installation checks must be known. Attempts to install this system without this knowledge and expertise may jeopardize the integrity and/or operating safety of the vehicle. Please read instructions before beginning installation. Check the kit hardware against the parts list on this page and the product layout on the last page. Be sure you have all needed parts and know where they go. Also please review tools needed list and make sure you have needed tools.

#### ⚠ WARNING

Rough Country makes no claims regarding lifting devices and excludes any and all implied claims. We will not be responsible for any product that is altered.

If questions exist we will be happy to answer any questions concerning the design, function, and correct use of our products.

#### PRODUCT USE INFORMATION

#### ⚠ NOTICE NOTICE TO DEALER AND VEHICLE OWNER

Any vehicle equipped with any Rough Country product should have a "Warning to Driver" decal installed on the inside of the windshield or on the vehicle's dash. The decal should act as a constant reminder for whoever is operating the vehicle of its unique handling characteristics. Re-torque all installed hardware as often as possible to ensure safe operation.

INSTALLING DEALER - it is your responsibility to install the warning decal and forward these installation instructions on to the vehicle owner for review. These instructions should be kept in the vehicle for its service



#### Torque Specs:

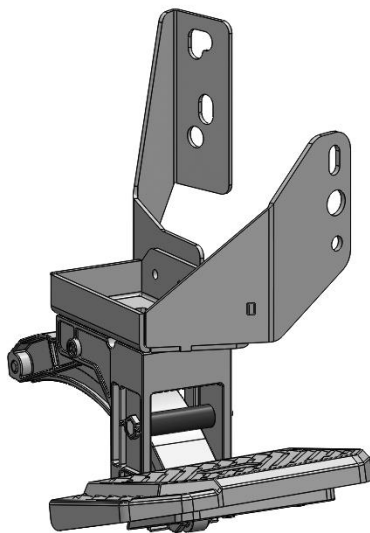
Size	Grade 5	Grade 8	Size	Class 8.8	Class 10.9
5/16"	15 ft/lbs	20ft/lbs	6MM	5ft/lbs	9ft/lbs
3/8"	30 ft/lbs	35ft/lbs	8MM	18ft/lbs	23ft/lbs
7/16"	45 ft/lbs	60ft/lbs	10MM	32ft/lbs	45ft/lbs
1/2"	65 ft/lbs	90ft/lbs	12MM	55ft/lbs	75ft/lbs
9/16"	95 ft/lbs	130ft/lbs	14MM	85ft/lbs	120ft/lbs
5/8"	135ft/lbs	175ft/lbs	16MM	130ft/lbs	165ft/lbs
3/4"	185ft/lbs	280ft/lbs	18MM	170ft/lbs	240ft/lbs



## INSTALLATION INSTRUCTIONS

### PARTS LIST:

Item	Quantity
Linkage Arm Assembly	1
Step Pad	1
Frame Mounting Bracket	1
Support Bracket	1
8mm x 25mm Combo Bolts	4
8mm Lock Washer	1
8-1.25mm x 20mm Hex Bolt	1
8mm Nylon Lock Nuts	4
8mm x 24mm x 2mm Flat Washers	5
8-1.25mm x 20mm T-Bolts	4
14mm x 50mm x 4mm Flat Washers	1

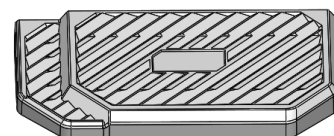
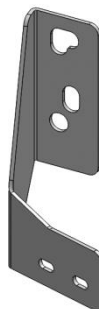
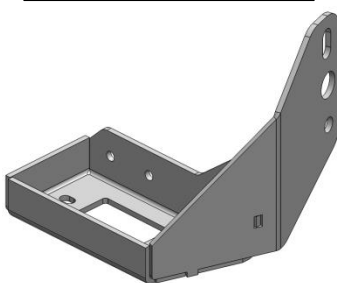
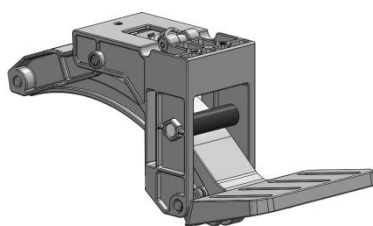


Linkage Arm Assembly

Frame Mounting Bracket

Support Bracket

Step Pad



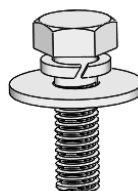
Lock Washer



Flat Washer



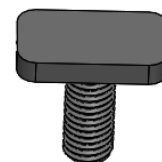
Hex Bolt



Combo Bolt



Lock Nut



T-Bolt

## TOOLS REQUIRED



Ratchet



13mm Socket



Extensions

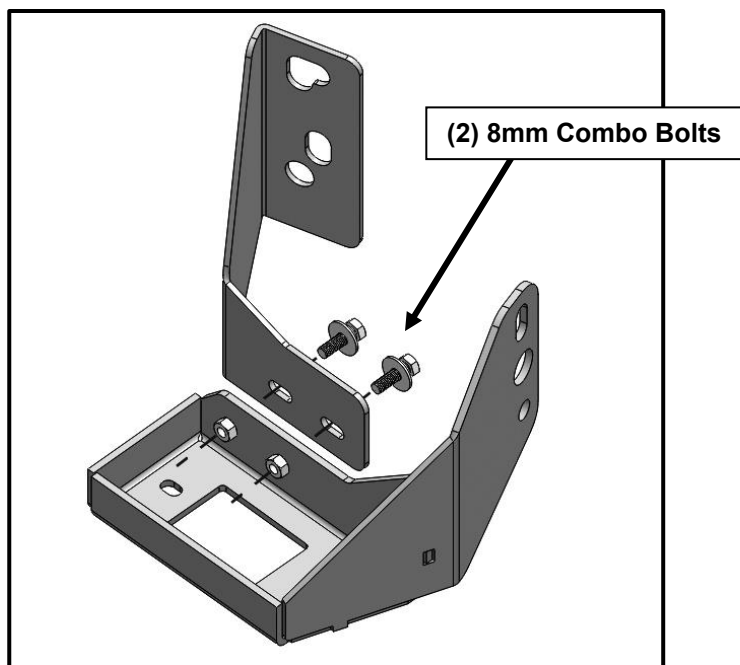


Wrench

1

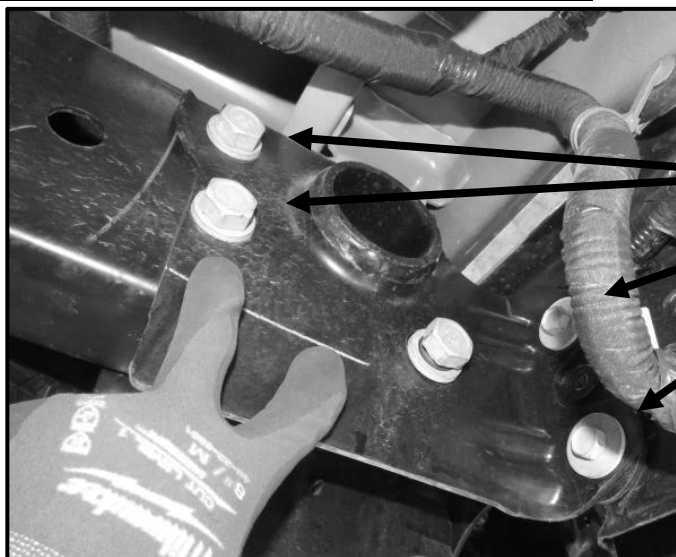
Follow (Fig 1) to combine the mounting bracket to the support bracket. **Do not fully tighten hardware at this time.**

(Fig 1) Combine Support Bracket to Frame Mounting Bracket



2

Follow (Fig 2 – 4) to install the mounting bracket & support bracket to the frame of the vehicle. **Ensure hardware remains hand tightened.**

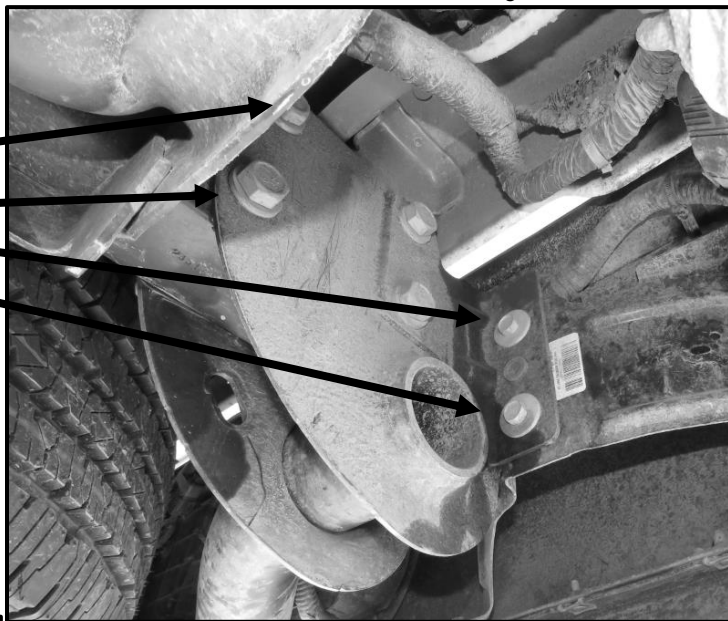


(Fig 2a) Starting at the rear DS remove the (4) OEM Hex Bolts

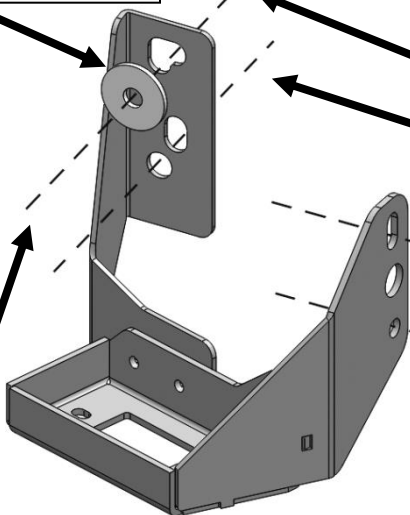
Model with Hitch closer to mounting point pictured (Model 'A')

(Fig 2b) Starting at the rear DS  
remove the (4) OEM Hex Bolts

Model with Hitch farther from  
mounting point pictured  
(Model 'B')



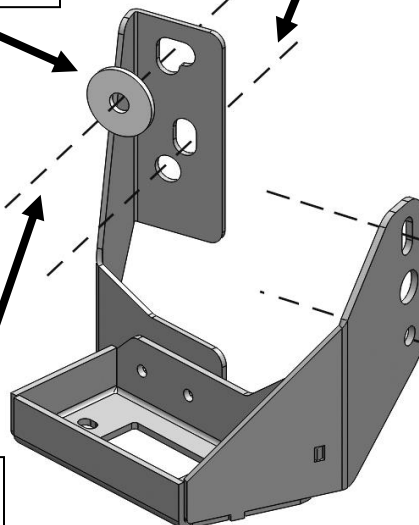
(1) 14mm Flat Washer



(Fig 3) Attach combined brackets  
to vehicle reusing (4) OEM Hex  
Bolts, using additional flat  
washer to keep bolt from falling  
through bracket

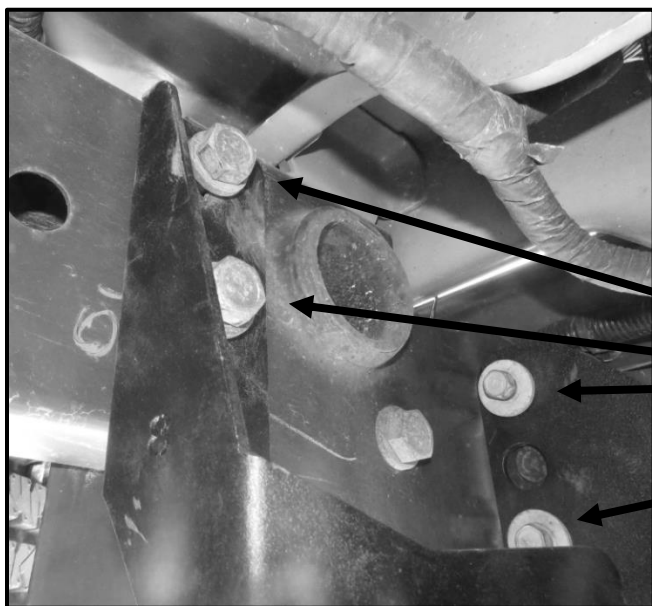
Note: Model 'A' vehicles will  
have OEM Bolt toward right  
side of top mounting slot

(1) 14mm Flat Washer

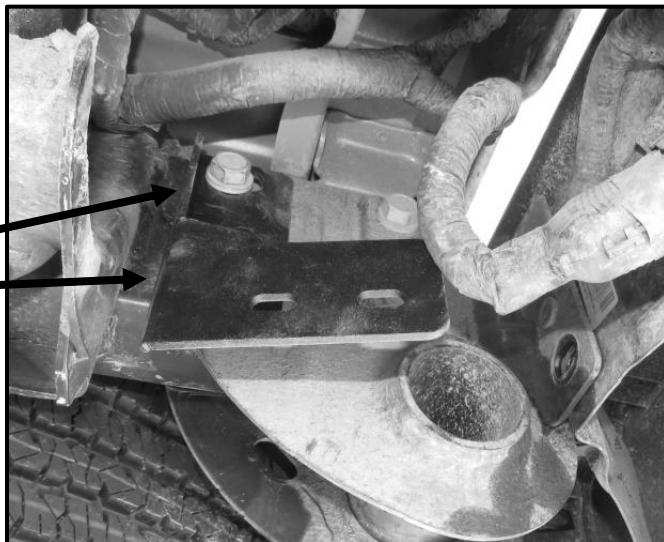


Note: Model 'B' vehicles will  
have OEM Bolt toward bottom  
side of top mounting slot

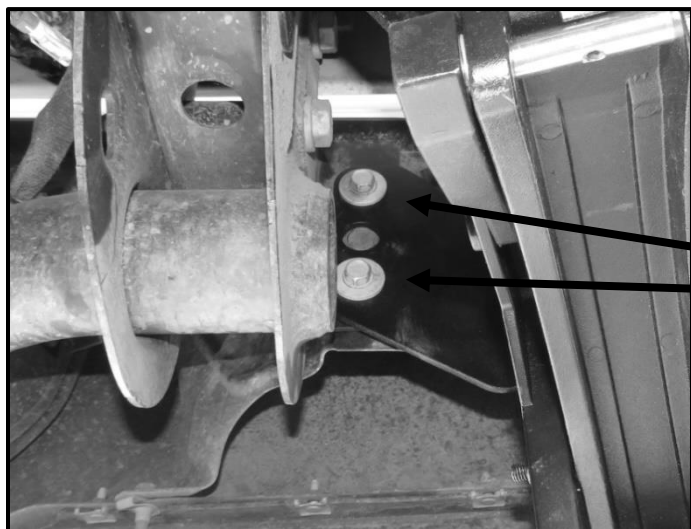




**(Fig 4a) Mounted Brackets  
for Model 'A' vehicles**



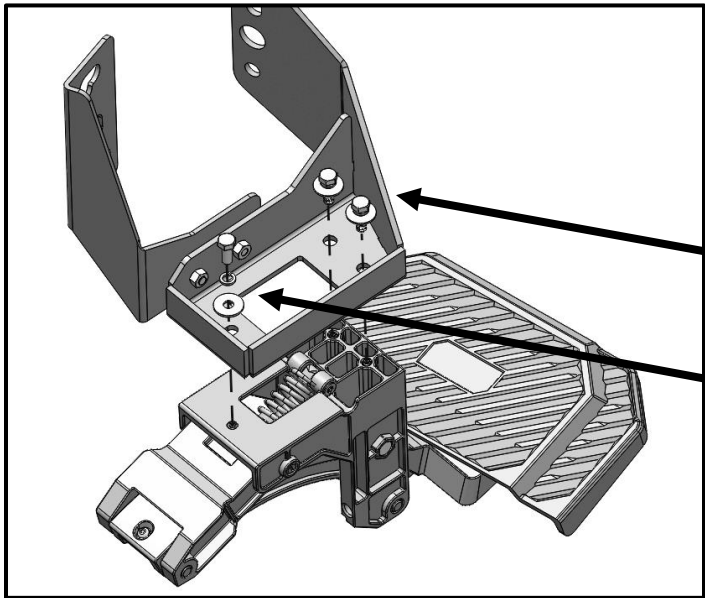
**(Fig 4b) Mounted  
Support Bracket for  
Model 'B' vehicles**



**(Fig 4c) Mounted Frame  
Mounting Bracket for  
Model 'B' vehicles**

3

Follow (Fig 5 – 8) to install the rest of the linkage arm assembly to the mounting bracket. Once finished, **Tighten all hardware at this time to the preferred position.** Do periodic inspections to the installation to make sure that all hardware is secure and tight.

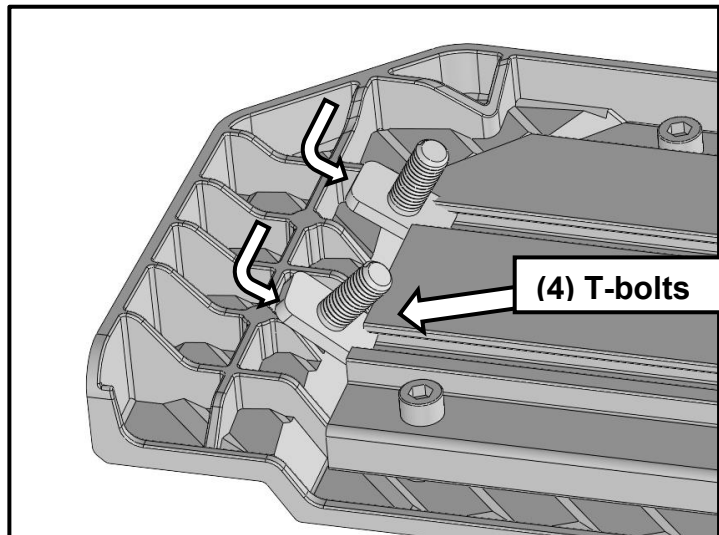


(Fig 5) Mount the frame & support bracket to the linkage arm assembly

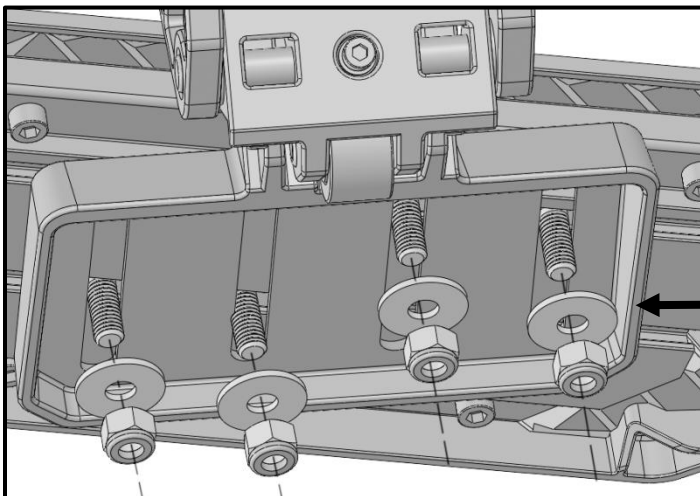
(2) 8mm Combo Bolts

(1) 8mm Hex Bolt  
(1) 8mm Lock Washer  
(1) 8mm Flat Washer

(Fig 6) Slide in T-bolts through open ends of the channels underside of Step Pad (two T-bolts per channel)



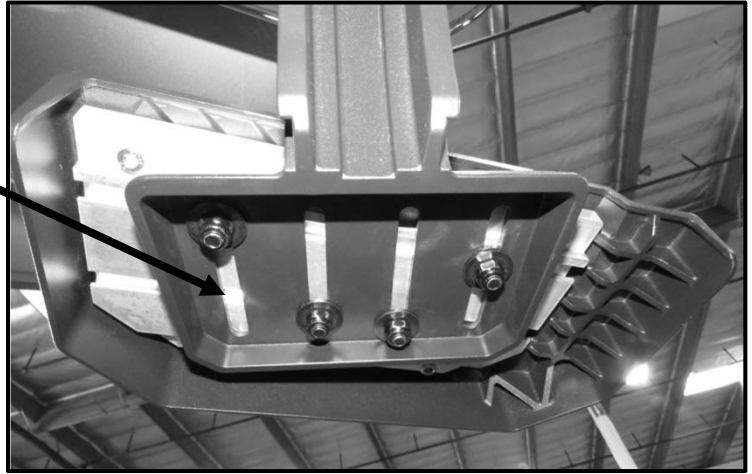
(4) T-bolts



(Fig 7) Attach Step Pad to Corner Step Base

(4) 8mm Flat Washers  
(4) 8mm Nylon Lock Nuts

(Fig 8) The step pad can be adjusted to the user liking



Complete Installation

**Note:** Excess dirt & debris may prevent from functioning properly. Simply clean the dirt off with after periodically to maintain optimal condition of corner step.

By purchasing any item sold by Rough Country, LLC, the buyer expressly warrants that he/she is in compliance with all applicable, State, and Local laws and regulations regarding the purchase, ownership, and use of the item. It shall be the buyers responsibility to comply with all Federal, State and Local laws governing the sales of any items listed, illustrated or sold. The buyer expressly agrees to indemnify and hold harmless Rough Country, LLC for all claims resulting directly or indirectly from the purchase, ownership, or use of the items.