



Nissan 2005-2021 Frontier Hood Assist

Thank you for choosing Rough Country for all your vehicle needs.

Please read instructions before beginning installation. Check the kit hardware against the kit contents shown below. Be sure you have all needed parts and know where they go.

If question exist, please call us @1-800-222-7023. We will be happy to answer any questions concerning this product. Check all fasteners for proper torque. Check to ensure for adequate clearance between all components. Periodically check all hardware for tightness.

Kit Contents:

Hood Struts x2
Driver Side Hood Bracket x1
Pass Side Hood Bracket x1
Driver Side Fender Bracket x1
Pass Side Fender Bracket x1

Tools Needed:

10mm Wrench or Socket
12mm Wrench or Socket



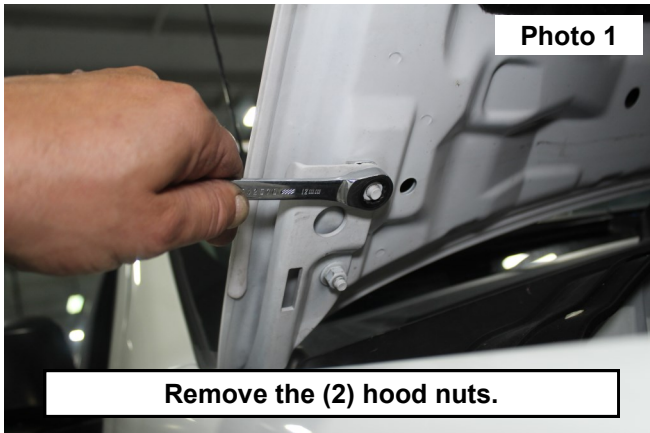
Torque Specs:

Size	Grade 5	Grade 8	Size	Class 8.8	Class 10.9
5/16"	15 ft/lbs	20ft/lbs	6MM	5ft/lbs	9ft/lbs
3/8"	30 ft/lbs	35ft/lbs	8MM	18ft/lbs	23ft/lbs
7/16"	45 ft/lbs	60ft/lbs	10MM	32ft/lbs	45ft/lbs
1/2"	65 ft/lbs	90ft/lbs	12MM	55ft/lbs	75ft/lbs
9/16"	95 ft/lbs	130ft/lbs	14MM	85ft/lbs	120ft/lbs
5/8"	135ft/lbs	175ft/lbs	16MM	130ft/lbs	165ft/lbs
3/4"	185ft/lbs	280ft/lbs	18MM	170ft/lbs	240ft/lbs

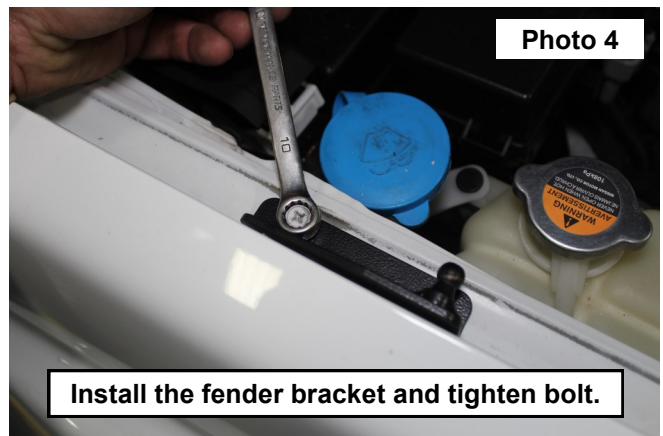
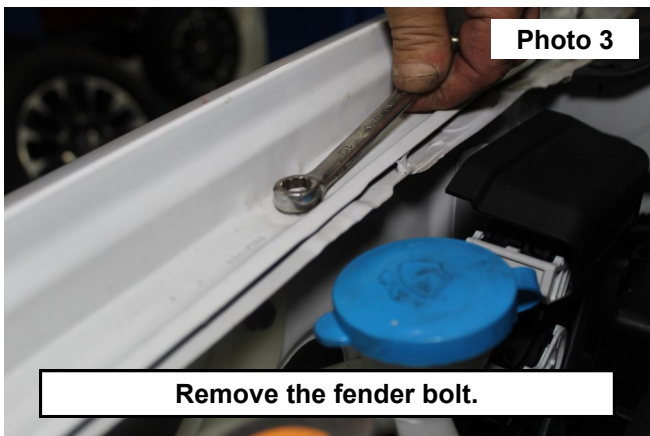


INSTALLATION INSTRUCTIONS

1. Lift the hood on the vehicle.
2. Support the hood and remove the (2) nuts from the hood hinge. Retain this hardware. See Photo 1.
3. Place the hood bracket onto the hood hinge with the ball stud toward the outside of the hood. Tighten the bracket using the OE nuts. See Photo 2.



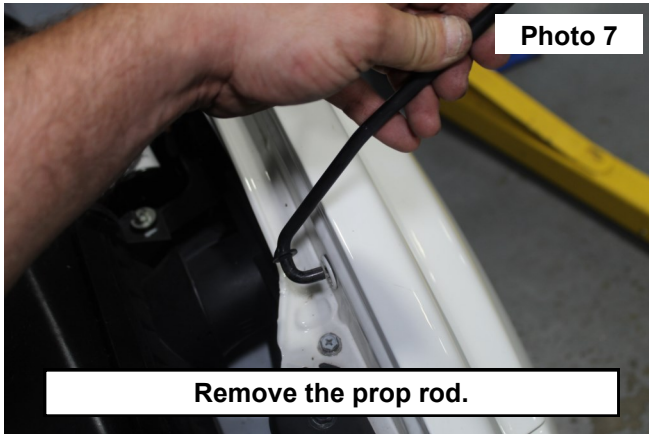
4. Remove the fender bolt using a 10mm socket. See Photo 3.
5. Place the fender bracket with the ball stud toward the inside of the vehicle. Tighten the bracket using the OE bolt. See Photo 4.



6. Attach the body side of the hood strut to the hood mount. Make sure the clip has been fully seated. See Photo 5.
7. Attach the rod side of the hood strut to the fender mount. Make sure the clip has been fully seated. See Photo 6.



8. Remove the prop rod from the fender by rotating the bottom side of the rod out from the fender. See Photo 7.
9. Remove the prop rod holder from the fender.
10. Following steps 2-7 install the drivers side mounting brackets and hood strut.
11. Slowly close the hood to insure the struts are clearing the body of the vehicle and in correct working order.
12. If step 11 is in working order close and latch the hood.



By purchasing any item sold by Rough Country, LLC, the buyer expressly warrants that he/she is in compliance with all applicable, State, and Local laws and regulations regarding the purchase, ownership, and use of the item. It shall be the buyers responsibility to comply with all Federal, State and Local laws governing the sales of any items listed, illustrated or sold. The buyer expressly agrees to indemnify and hold harmless Rough Country, LLC for all claims resulting directly or indirectly from the purchase, ownership, or use of the items.

