

## ***advanced FLOW engineering***

Cold Air Intake System

### **Instruction Manual** P/N: 56-20066D

Make: **Subaru**  
Make: **Subaru**

Model: **Outback**  
Model: **Legacy**

Year: **2013-2014**  
Year: **2013-2014**

Engine: **H4-2.5L**  
Engine: **H4-2.5L**



- Please read the entire instruction manual before proceeding.
- Ensure all components listed are present.
- For technical support please call at 951-493-7185.
- Ensure you have all necessary tools before proceeding.
- Do not attempt to work on your vehicle when the engine is hot.
- Retain factory parts for future use.

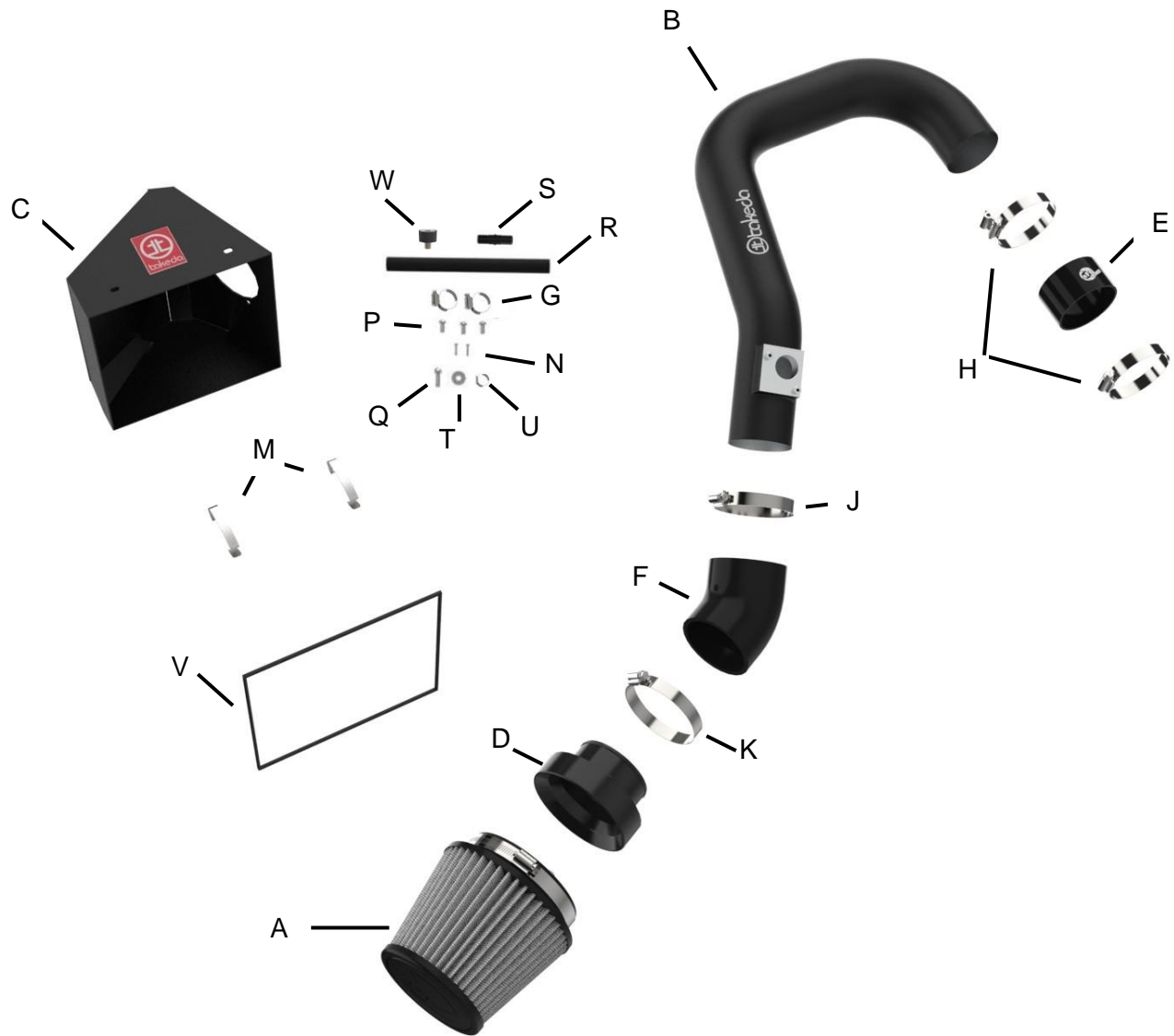
Label	Qty.	Description	Part Number
A	1	Air Filter (Pro DRY S) for 56-20066D	TF-9012D
B	1	Tube	05-5620066B1
C	1	Housing	05-5620066B2
D	1	Adaptor, Injection Molded 4.5"	05-01037
E	1	Coupling, Silicone Straight: 2-3/4"ID x 1-3/4"L	05-01107
F	1	Coupling, Elbow Reducer: (3"x2-3/4")ID x 45 Deg	05-00136
G	2	Clamp, Mini 008 (1/2" - 29/32")	03-50077
H	2	Clamp, 044 (2-5/16" - 3-1/4")	03-50019
J	1	Clamp, 048 (2-9/16" - 3-1/2 ")	03-50007
K	1	Clamp, 052 (2-13/16" - 3-3/4 ")	03-50008
M	2	Clip, Spring	03-50109
N	2	Screw, Torx: M4x.7x8	03-50491
P	3	Screw, Btn Hd Socket: M6x1x12	03-50102
Q	1	Screw, Hex Hd: M6x1x16	03-50052
R	1	Hose, Fuel: 1/2" ID, Black (8" Length)	05-00027
S	1	Fitting, Tube Coupling: 1/2" x 1"	03-50144
T	1	Washer, Flat: M6	03-50070
U	1	Washer, Lock: M6	03-50071
V	1	Trim, Rubber Edge: 1/16" (34.25" Length)	05-00149
W	1	Isolation Mount, M6 Stud and Insert x 1/2"H	03-50664

**Installation will require the following tools:**

Ratchet, Socket Set, M4 Allen wrench or socket, T-25 Torx driver or socket.

Warranty information available at <https://afepower.com/contact#warranty>.

**Emissions Disclaimer:** This product is not currently CARB exempt and is not available for purchase in California or for use on any vehicle registered with the California Department of Motor Vehicles.



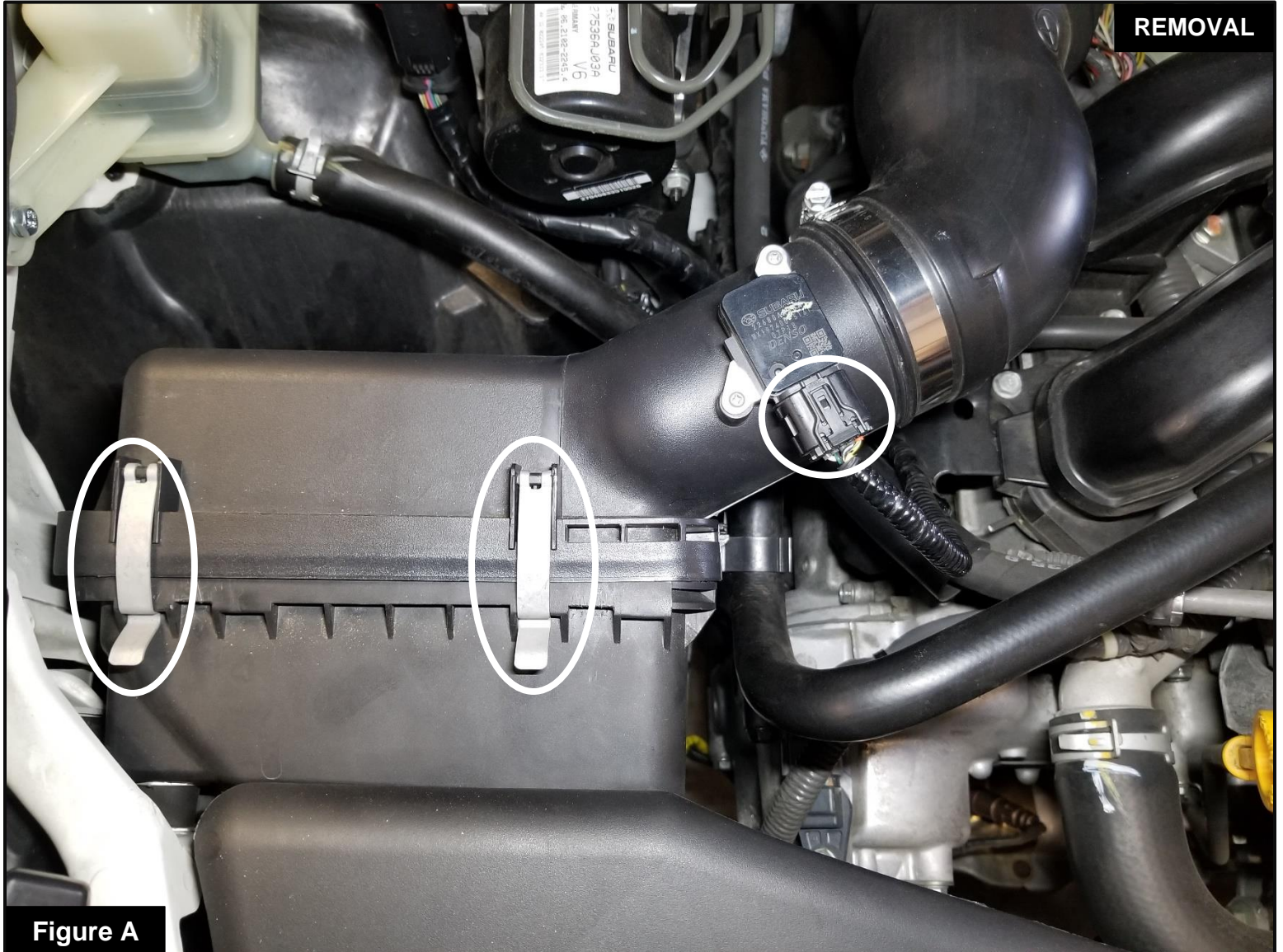


Figure A

**Refer to Figure A for Steps 1-3**

Step 1: Unclip the two (2) halves of the air filter housing.

Step 2: Remove the factory air filter.

Step 3: Disconnect the Mass Air Flow (MAF) sensor harness.



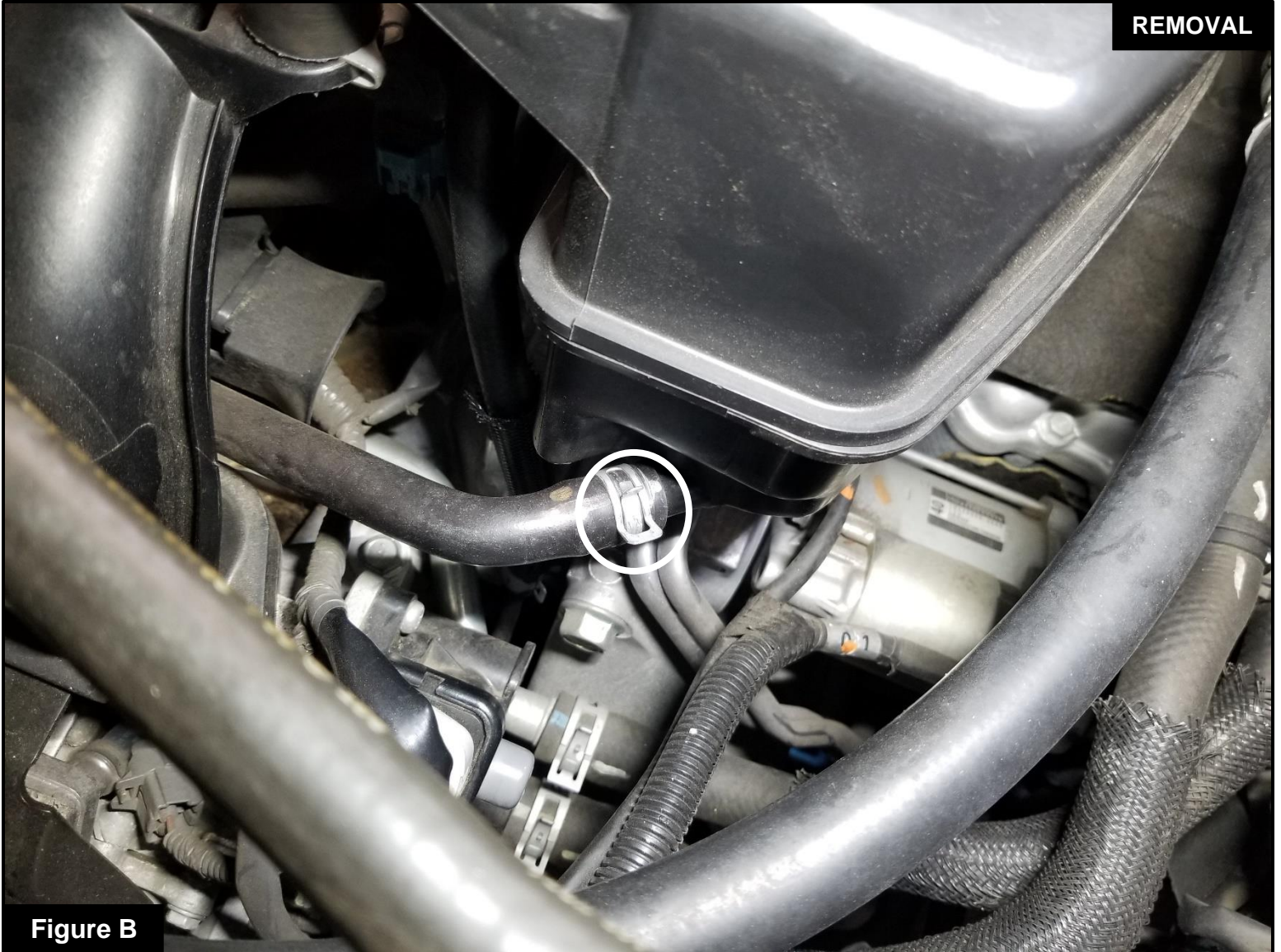
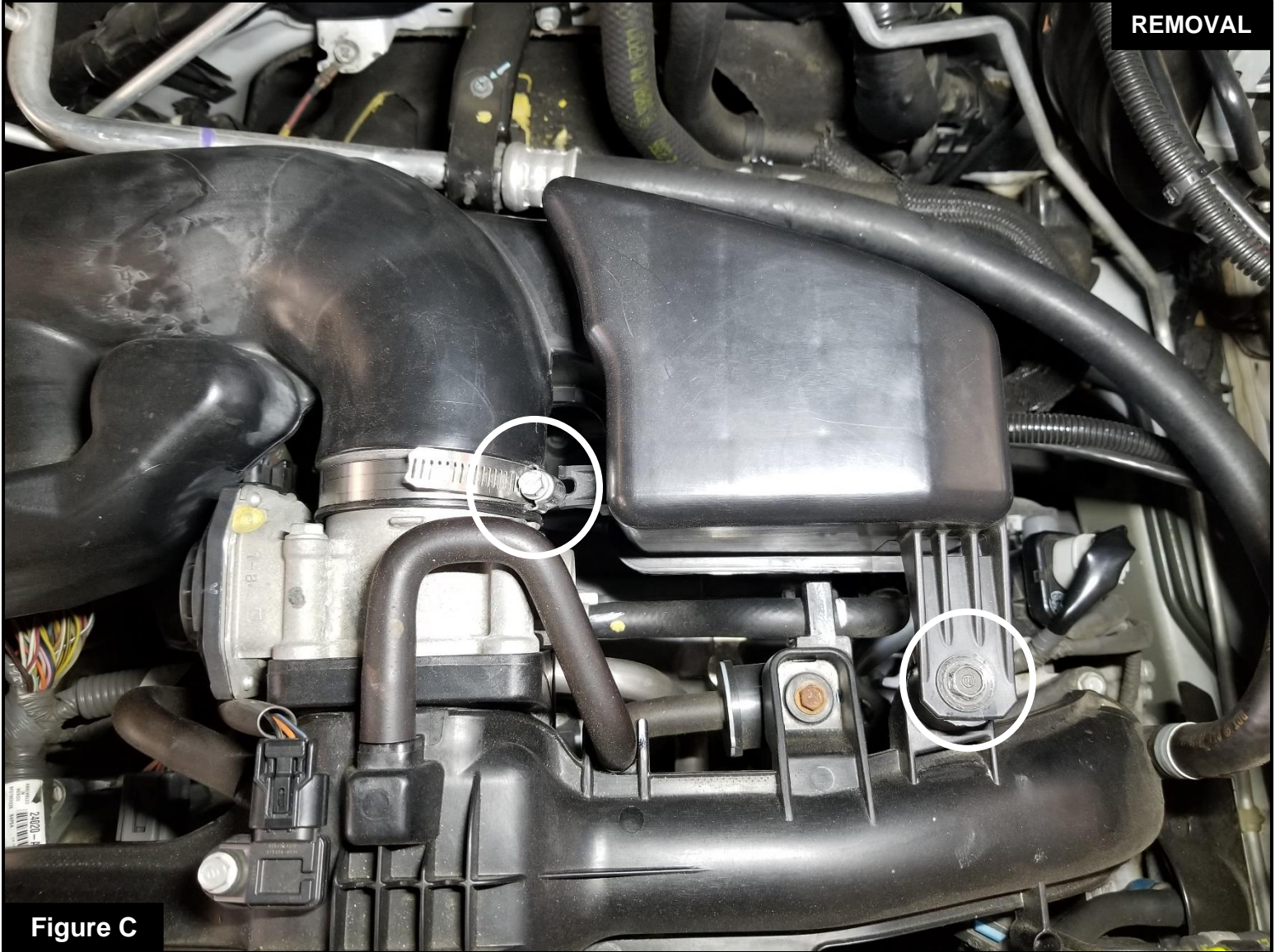


Figure B

**Refer to Figure B for Step 4**

Step 4: Pinch the clamp to remove the crankcase breather hose.

**Figure C****Refer to Figure C for Steps 5-7**

Step 5: Loosen the clamp on the factory tube.

Step 6: Remove the bolt holding the factory tube.

Step 7: Remove the factory intake out of the vehicle.



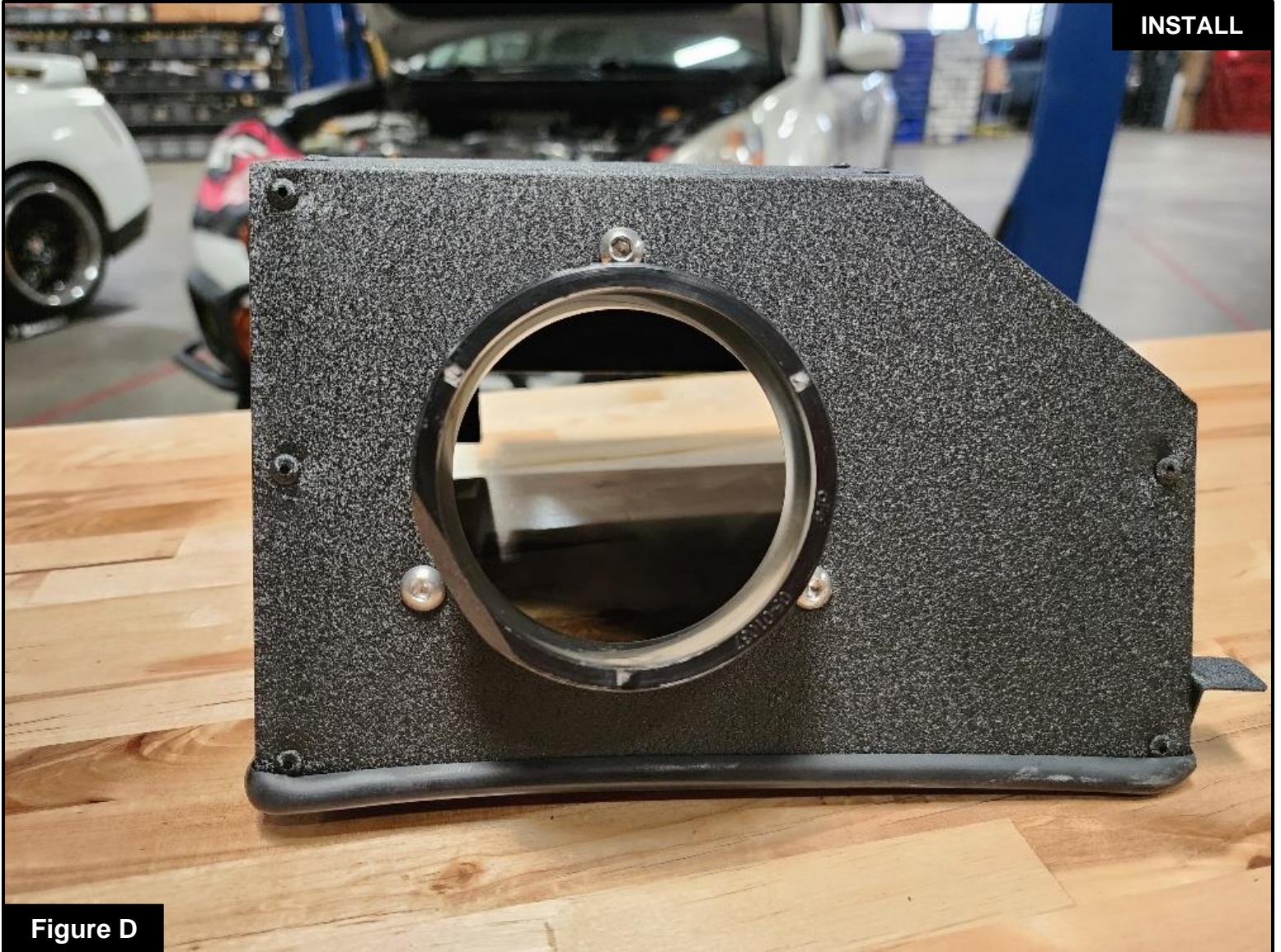


Figure D

**Refer to Figure D for Step 8**

Step 8: With the supplied bolts, mount the provided air filter adapter on the Takeda housing.

**Figure E****Refer to Figure E for Steps 9-11**

Step 9: Install the supplied air filter into the Takeda housing and tighten the clamp.

Step 10: Install the supplied seal trim onto the edge of the Takeda housing.

Step 11: Attach the supplied clips into the Takeda housing.

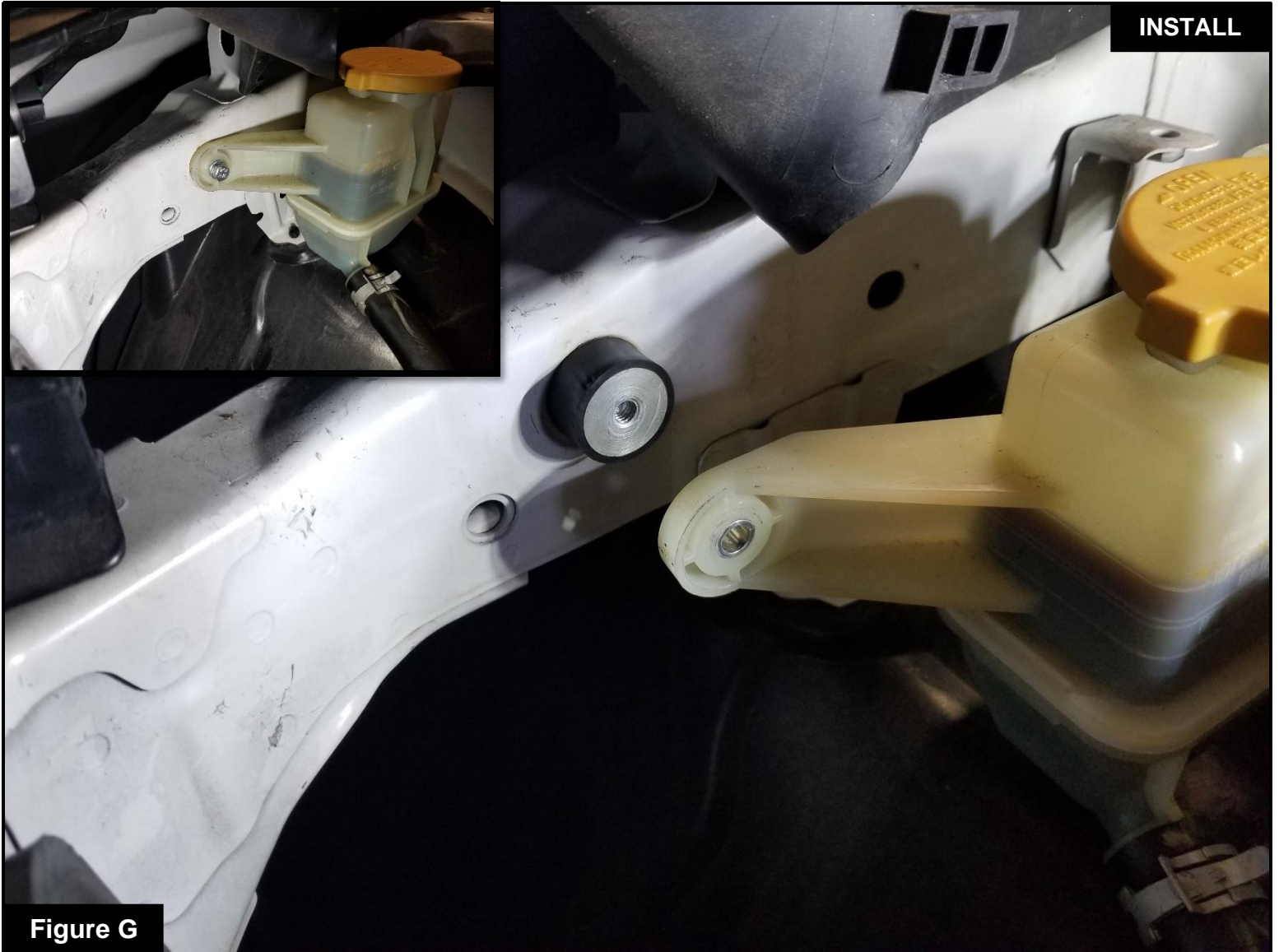




Figure F

**Refer to Figure F for Step 12**

Step 12: Install the Mass Air Flow sensor from the factory tube onto the Takeda tube.

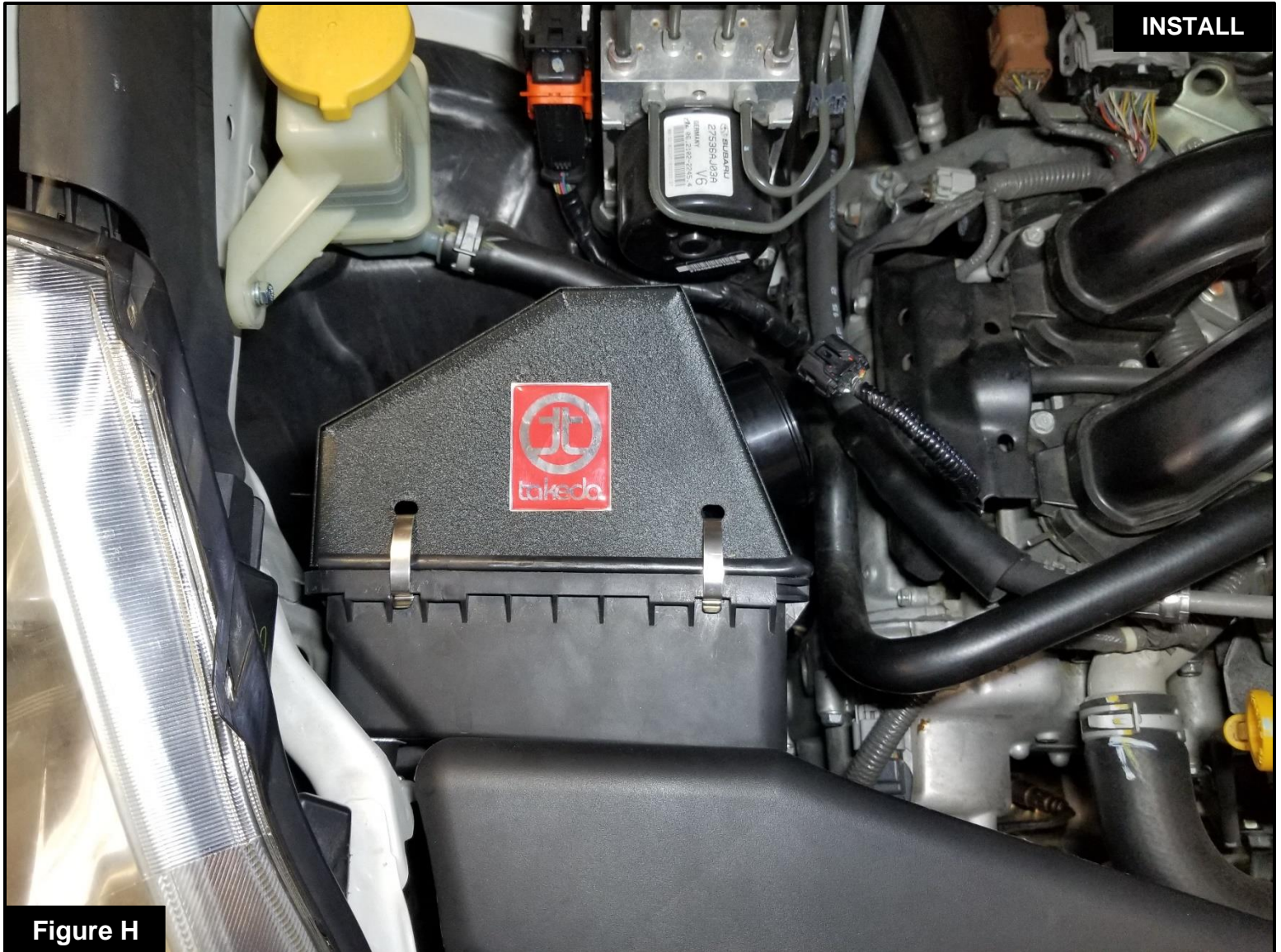


**Refer to Figure G for Steps 13-14**

Step 13: Install the supplied isolation mount behind the power steering reservoir.

Step 14: Secure the power steering reservoir using the supplied screw, fender washer, and lock washer.





**Refer to Figure H for Step 15**

Step 15: Install the Takeda housing by clamping to the other half of the factory housing.





Figure I

**Refer to Figure I for Steps 16-17**

Step 16: Attach the supplied coupling to the throttle body, tighten only the clamp closest to the throttle body.

Step 17: Attach the supplied coupling on the air filter adapter. Do not tighten clamp at this time.



**Figure J****Refer to Figure J for Steps 18-19**

Step 18: Slip the assembled Takeda tube into the couplers on the throttle body and air filter adapter. Tighten the clamps at this time.

Step 19: Reconnect the Mass Air Flow sensor harness back onto the Mass Air Flow sensor.



Figure K

**Refer to Figure K for Step 20**

Step 20: Tighten the supplied fitting onto the supplied hose.



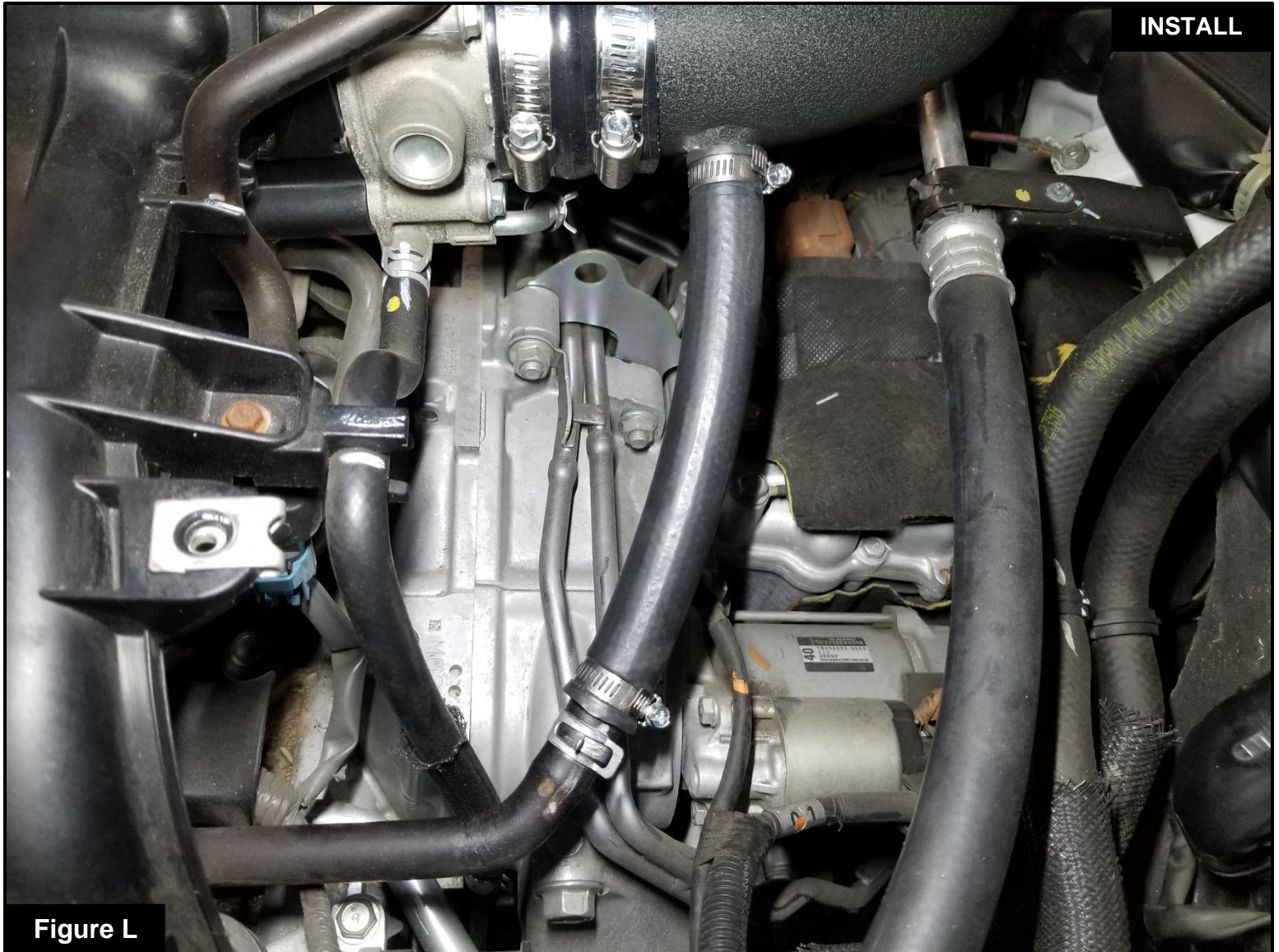


Figure L

**Refer to Figure L for Step 21**

Step 21: Connect the assembled hose onto the Takeda tube and the factory crankcase hose.





Figure M

**Refer to Figure M for Step 22**

Step 22: Make sure all components and connections are secure. Your installation is now complete. Thank you for choosing Takeda USA!

**Note: Check all bolts, clamps, and connectors after 100-200 miles**





**Page left blank intentionally**

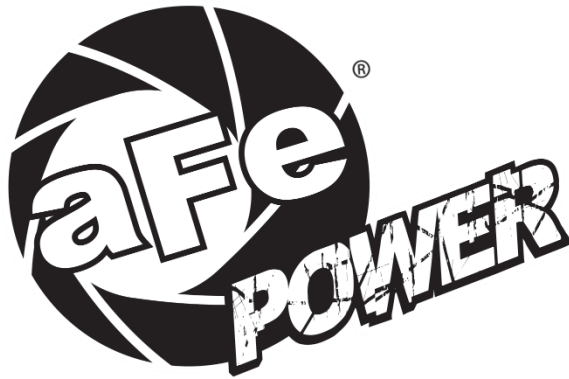


**Page left blank intentionally**





**Page left blank intentionally**



***advanced FLOW engineering, inc.***

Corona, CA 92879

<https://afepower.com/contact>