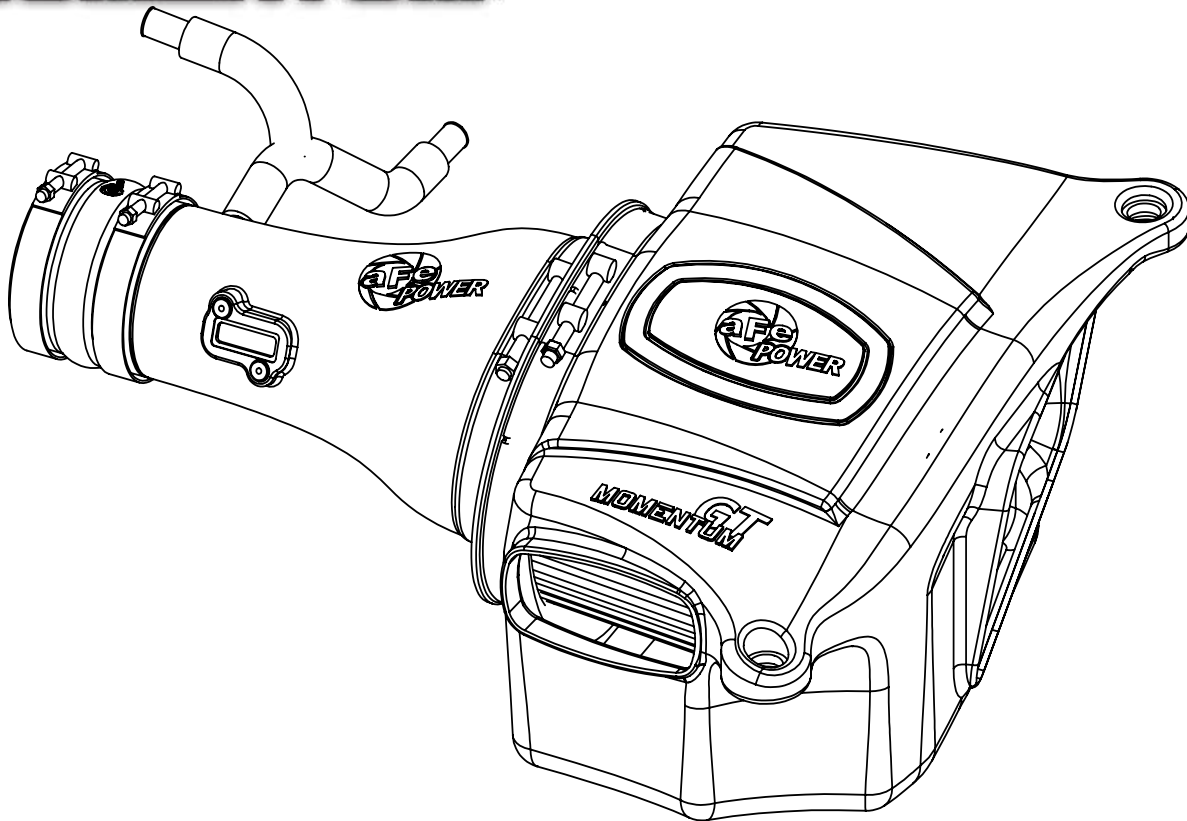




**GT**  
**MOMENTUM™**



## advanced FLOW engineering

Cold Air Intake System

Instruction Manual P/N: 51-76103 / 54-76103 / 75-76103

Make: **Infiniti** Model: **QX56**

Year: **2011-2013** Engine: **V8-5.6L**

Make: **Infiniti** Model: **QX80**

Year: **2014-2023** Engine: **V8-5.6L**

Make: **Nissan** Model: **Armada**

Year: **2017-2023** Engine: **V8-5.6L**

Make: **Nissan** Model: **Patrol (Y62) Non-US Model** Year: **2010-2023** Engine: **V8-5.6L**



- Please read the entire instruction manual before proceeding.
- Ensure all components listed are present.
- If you are missing any of the components, call customer support at 951-493-7185.
- Ensure you have all necessary tools before proceeding.
- Do not attempt to work on your vehicle when the engine is hot.
- Disconnect the negative battery terminal before proceeding.
- Retain factory parts for future use.

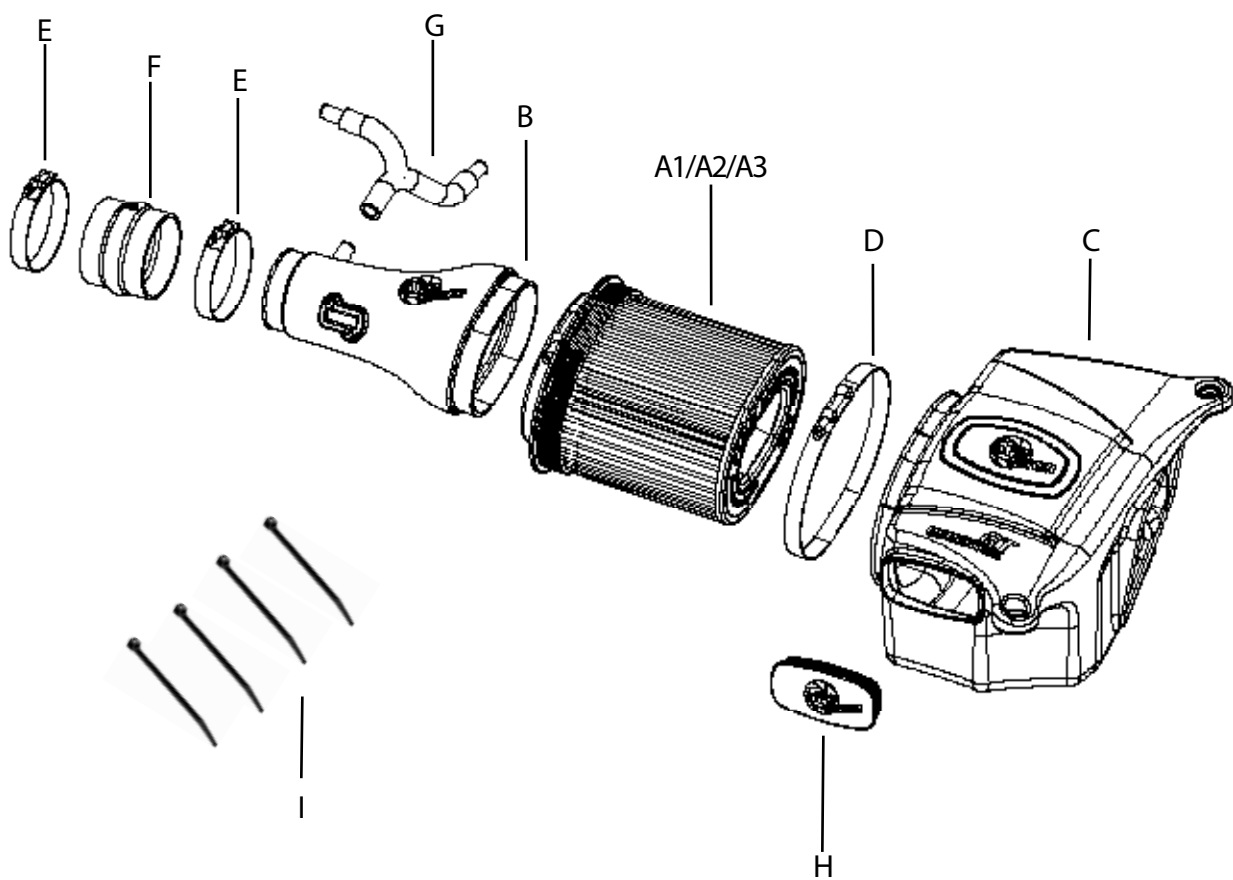
Label	Qty.	Description	Part Number
A1	1	Air Filter (Pro DRY S)	21-91061 (51-76103)
A2	1	Air Filter (Pro-5R)	24-91061 (54-76103)
A3	1	Air Filter (Pro GUARD 7)	72-91061 (75-76103)
B	1	Tube	05-76103B1
C	1	Housing	05-76103B2
D	1	Clamp, T-Bolt (8-5/16"-8-5/8") SS	03-50267
E	2	Clamp, T-Bolt (3-3/4"-4-1/16") SS	03-50265
F	1	Coupling, Silicone Double Hump	05-01389
G	1	Hose, Adaptor CCv (Silicone)	05-01346
H	1	Plug, Urethane	05-01202
I	4	Ties, Nylon Cable, Black	05-60167

**Tools needed:** 7mm Nut Driver, 8mm Nut driver, 10mm Nut Driver, 11mm Deep Socket, 1/4" Ratchet, 10mm deep Socket, Flathead Screw Driver, Phillips Screw Driver, Pliers.

**Recommended:** Acetone

**Warranty Information available at:** <https://afepower.com/contact#warranty>

**Emission Disclaimer:** This system is not currently CARB exempt and is not available for sale in California or for use on any vehicle registered with the California Department of Motor Vehicle.





Refer to Figure A for Steps 1-2

Step 1: Using a 10mm nut driver, remove the two bolts ① securing the engine cover.

Step 2: Lift and pull the engine cover toward you to remove.



Figure B

Refer to Figure B for Steps 3-7

Step 3: Using an 8mm nut driver, loosen the hose clamp (2) at the throttle body.

Step 4: Using a 10mm nut driver, remove the three bolts (3) securing the OE housing in place.

Step 5: Unclip the Mass Air Flow (MAF) sensor (4) from tube.

Step 6: Using a 7mm nut driver or philips head screwdriver, remove both screws and MAF sensor.

You will reuse both screws.

Step 7: Carefully detach all three clips (5) securing the MAF sensor wiring harness to the OE housing.



Figure C

Refer to Figure C for Steps 8-11

Step 8: Compress the metal spring clamps ⑥ on both crank case vent (CCV) hoses and slide down hose.

Step 9: Disconnect both CCV hoses from resonance chamber and position out of the way.

Step 10: Unclip and remove both plastic clips ⑦ connecting the rubber evap hose to the resonance chamber.

Step 11: Remove the entire OE intake assembly at this time.



Figure D

### Refer to Figure D for Steps 12-17

Step 12: Slide large t-bolt clamp (8) over aFe housing flange as shown.

Step 13: Clean the inside of the rotomold housing flange and both mating surfaces of the filter flange (acetone recommended).

Step 14: Insert the filter into housing then the tube into the filter (9) and tighten both clamps at this time.

Step 15: Assemble the two smaller t-bolt clamps over the silicone hump coupler as shown (10).

Step 16: Tighten only the clamp over the tube side at this time (11).

Step 17: Insert MAF sensor (12) and secure using the two screws you removed in step 6.

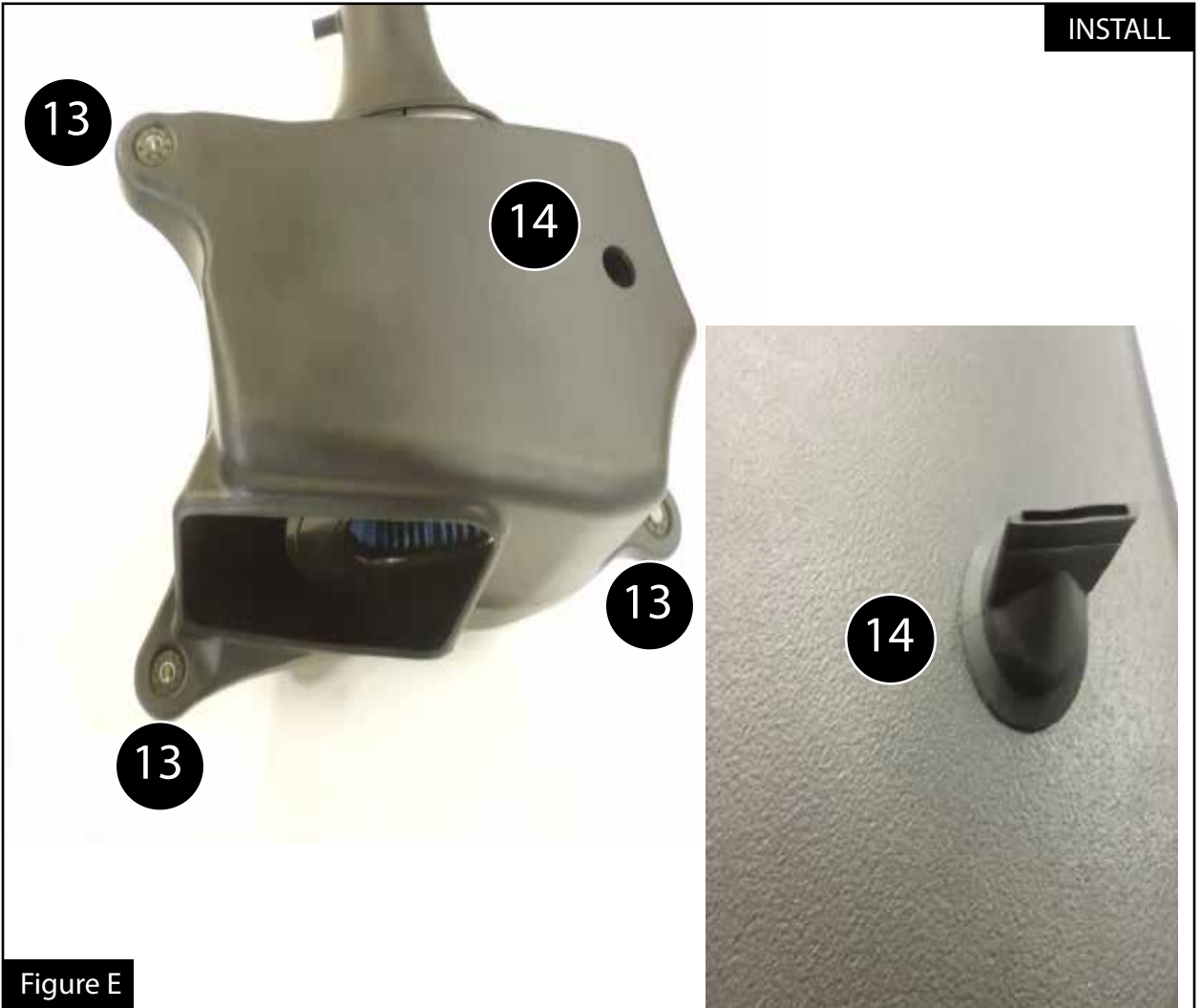


Figure E

Refer to Figure E for Steps 18-19

Step 18: Remove the 3 steel sleeves and rubber grommets (13) from the OE housing and install on the aFe housing as shown.

Step 19: If equipped with rubber duck-billed drain plug (14) install here, otherwise leave open.





Figure F

Refer to Figure F for Steps 20-21

Step 20: Take the full intake assembly and place silicone hump coupler over throttle body as shown.

Step 21: From the driver side of the engine, push and compress (15) the coupling while lowering the housing side down into position (16), aligning the three mounting locations.

**Figure G**

Refer to Figure G for Steps 22-25

Step 22: Install (17) and tighten the three bolts you previously removed in step 4, securing the aFe housing in place.

Step 23: At this time, tighten the remaining t-bolt clamp (18) over the throttle body.

Step 24: If equipped with the vent hose shown in the inset picture, clip into the slot on the side of the aFe housing.

Step 25: Connect the MAF sensor to the aFe tube at this time (19).

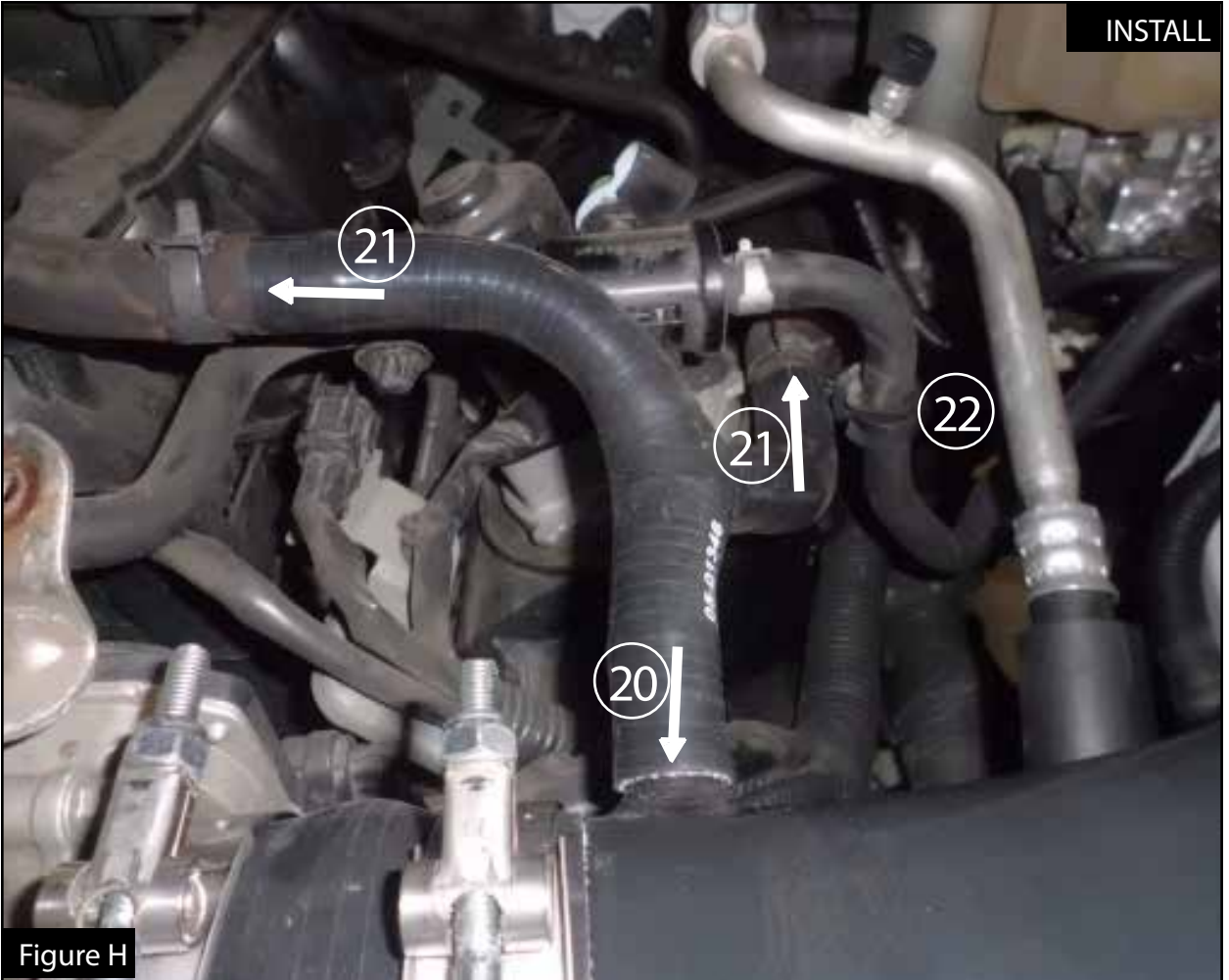


Figure H

Refer to Figure H for Steps 26-29

Step 26: Install the provided silicone adaptor coupling: place the end with no metal fitting (20) over the nipple on the aFe tube.

Step 27: Install the remaining two ends of the adaptor (21) with the stainless fittings into the CCV hoses.

Step 28: Compress and slide the two spring clips over the silicone adaptor ends as shown.

Step 29: Use a provided cable tie to secure (22) the evap hose to the silicone adaptor coupling.



Figure I

Refer to Figure I for Steps 30-32

Step 30: Using the provided cable ties, secure the MAF sensor wiring harness (23) as shown in the inset picture, in order to be neatly tucked out of the way.

Step 31: Make sure all clamps and connections are secured.

Step 32: Reinstall the engine cover at this time with the bolts you removed in Step 1.

Your installation is now complete. Thank you for choosing aFe Power!

NOTE: Retighten all connections after approximately 100-200 miles.

Place enclosed CARB EO sticker on or near the device on a smooth, clean surface.

EO identification label is required to pass the smog inspection.

PAGE LEFT BLANK INTENTIONALLY



PAGE LEFT BLANK INTENTIONALLY

PAGE LEFT BLANK INTENTIONALLY



**advanced FLOW engineering, inc.**

Corona, CA 92879

<https://afepower.com/contact>