

# ROUGH COUNTRY

## SUSPENSION SYSTEMS®



**WARNING:** This product contains a chemical known to the State of California to cause Cancer and Reproductive Harm. For more information, go to [www.P65Warnings.ca.gov](http://www.P65Warnings.ca.gov).

## 2009-2018 DODGE RAM 1500 TRADITIONAL STYLE FLARES

### PRIOR TO INSTALLATION

- A) Install the flares according to these written instructions with the hardware provided. **WARNING:** Failure to install according to these instructions will invalidate the warranty. This includes, but is not limited to, using alternative installation methods, hardware, or materials. **DO NOT USE:** Loctite, Superglue, or similar products on the hardware or the flares. Install flares on cleaned vehicle surfaces.
- B) **Fit:** Verify the fit of the flares to vehicle prior to installation (some filing, sanding, or cutting may be necessary to ensure proper fit).
- C) **Painting:** (Optional) if paint is desired it must be done prior to installing flares on vehicle. Clean outer surface with a good grade degreaser. **DO NOT USE LACQUER THINNER OR ENAMEL REDUCER AS A DEGREASER.** Wipe outer surface thoroughly with a tack rag prior to paint. Application of plastic adhesion promoter for ABS plastic as per your paint system manufacturer's recommendations is required. Paint flares using a high-quality enamel, or polyurethane automotive paint. If painting edge trim (not recommended), use a flex additive.
- D) **Performance:** Using larger tires may increase the area required to turn the vehicle. Some tire/rim combinations may require lowering bump stops and or installing steering stops to prevent tire from contacting flare.
- E) **Exhaust System:** Modifications may be necessary to maintain a minimum 4" clearance between flares and exhaust pipes. (Exhaust gases should not vent directly onto flares)
- F) **Metal Protection:** All exposed fasteners and bare metal should be treated with rust resistant paint **BEFORE** installing flares. Spray inner fender wells with undercoating **AFTER** flare attachments have been completed.
- G) **Decals:** Flares may interfere with existing decals on vehicle. If you wish, remove decals prior to installation of flares.
- H) **Care & Cleaning:** Fender flares are built to last; any detergent you use to wash your vehicle is sufficient to clean the flare. Do not use any harsh abrasive detergents.

### TOOLS FOR EASY INSTALLATION:

- Soft Cloth or Alcohol Wipe
- Utility Knife
- Awl
- Pry Tool
- Socket Wrench
- 8mm Socket
- Phillips Screwdriver

**PLEASE READ:** Dirt and debris can become lodged between the fender flares and the vehicle's fenders, causing scratching and paint wear from vibration. Manufacturer is not responsible for any damage, and the installation of our fender flares is done with the buyer's understanding that this scratching and paint wear may occur.

**LIMITED LIFETIME WARRANTY AGAINST ANY MANUFACTURING DEFECTS:** To claim warranty you must provide Proof of Purchase.

**INCLUDED IN HARDWARE KIT:**

1.



Push-In Pocket Hardware, Brushed Metal  
44 pcs

2.



Push-In Pocket Hardware, Black  
44 pcs

3.



#8 Speed Clip  
4 pcs

4.



#8 Truss-Head Screw  
4 pcs

5.



Mounting Tab  
4 pcs

6.



"U" Clip  
8 pcs

7.



Truss Head Screw  
8 pcs

8.



Med. Wiper Style Edge Trim  
356 inches



**IF YOU PURCHASED GLOSSY BLACK FLARES (CODE "RCGB"):**



Prior to beginning installation process, peel the protective liner from each plastic piece included in the flare kit – all flares and inner pieces.

NOTE: It will be difficult to remove liner once edge trim and hardware are installed.

Once liner is removed, take care not to scratch flare surfaces. If flare needs to be cleaned, wipe gently with a clean soft cloth.



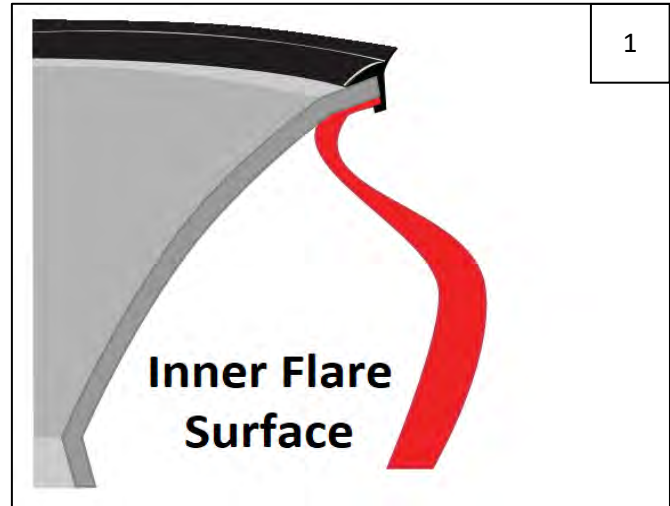
## SECTION 1: EDGE TRIM INSTALLATION

Using a debris-free soft cloth or alcohol wipe, clean vehicle at areas of installation.

Peel 2-3 inches of red vinyl backing away from supplied edge trim tape. Applying the adhesive side of the edge trim to the inner side of the flare, affix the edge trim to the top edge of the flare (the portion that comes in contact with the side of the vehicle).

Press edge trim into place along the top edge of the flare in one-foot increments, pulling red vinyl backing free as you continue to work your way around the top edge of the flare. Trim edge trim flush with ends of flare.

On sharp corners, the edge trim must be notched to prevent stretching and bunching. Refer to Pictures 2, 3, and 4.



As you come to the first "point" of the flare, cut a "V" notch into the backside of the edge trim at the sharpest part of the curve. Make sure that you retain 2-3 inches of vinyl backing for ease of further installation.



As you come to the second "point" in the flare, make another "V" notch in the backside of the edge trim, retaining 2-3 inches of vinyl backing. Proceed along the rest of the flare.



Correctly-installed edge trim around sharp corners.





## SECTION 2: POCKET HARDWARE INSTALLATION



Peel liner from tape on Push-In Pocket Hardware (brushed metal or black as preferred). NOTE: There will be extra Push-In Pocket Hardware.



Insert Push-In Pocket Hardware into each flare pocket hole (on outer flare surface, 8 places each front flare, 9 places each rear flare). Push in to engage clip and tape adhesion.

## SECTION 3: FRONT FLARE INSTALLATION – IF YOUR VEHICLE HAS A PLASTIC BUMPER

*If your vehicle has a metal bumper, proceed to SECTION 4.*

Prior to installation determine which front fender extension piece your vehicle requires.

- Extension pieces marked with “0268” and “0269” are for the 2009-2012 Plastic Bumper
- Extension pieces marked with “0270” and “0271” are for the 2012-2018 Plastic Bumper



Extension pieces look very similar so make sure to check markings on each part and use those made for your vehicle model. Marking on part is located in circled area.



Install extension pieces to main front flares using 2 supplied #8 Speed Clips and #8 Truss Head Screws per side.



9

Before tightening, make sure that molded flare features are aligned. Tighten screws using #2 Phillips driver.



10

Using an 8mm socket, remove and retain 2 factory fasteners from mud flap.



11

Use a pry tool to disengage plastic retainer at underside of mudflap. Remove and discard mud flap.



12

Use a pry tool to disengage and remove two plastic retainers on bumper at front of wheel well.



13

Remove 2 factory fasteners from wheel well at areas indicated by arrows. Retain fasteners for reinstallation.



14

Install a supplied Mounting Tab over factory hole located at top front of wheel well.





15

Mounting tab location.



16

Slide a supplied "U" Clip over tab, centering hole in clip approximately over hole in fender.



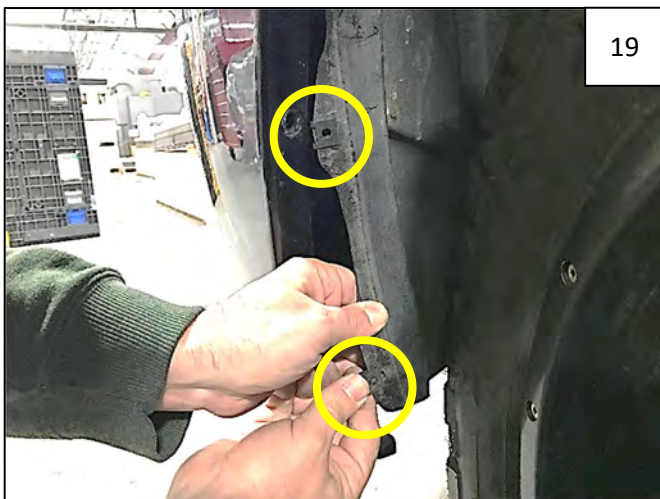
17

Use an awl to poke a hole in tab for ease of screw installation in Step 21.



18

Pull wheel well liner out of lip at front of bumper as shown, exposing 2 factory holes.



19

Install 2 supplied "U" Clips over holes in wheel well liner as shown; tuck liner back into front of bumper.



20

Hold flare on fender and start 4 factory fasteners at locations as shown.





21

Install a supplied Truss Head Screw through fender flare and into clips installed in Steps 16 & 19 (3 screws total).



22

Apply pressure to flare towards vehicle body at each fastening point and tighten all fasteners.

#### SECTION 4: FRONT FLARE INSTALLATION – IF YOUR VEHICLE HAS A METAL BUMPER

For metal bumpers, see below to determine which front fender extension piece your vehicle requires.

- Extension pieces marked with “0266” and “0267” are for the 2009-2018 Metal Bumper



23

Extension pieces look very similar so make sure to check markings on each part and use those made for your vehicle model. Marking on part is located in circled area.



24

Install extension pieces to main front flares using 2 supplied #8 Speed Clips and #8 Truss Head Screws per side.





25

Before tightening, make sure that molded flare features are aligned. Tighten screws using #2 Phillips driver.



26

Using an 8mm socket, remove and retain 2 factory fasteners from mud flap.



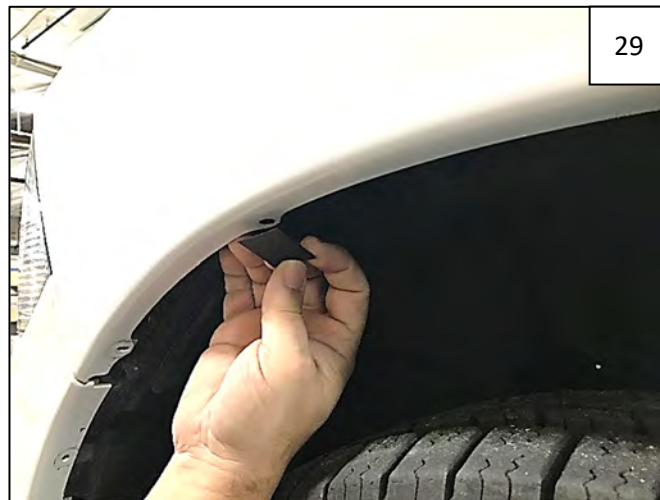
27

Use a pry tool to disengage plastic retainer at underside of mudflap. Remove and discard mud flap.



28

Remove 3 factory fasteners from wheel well at areas indicated by arrows. Retain fasteners for reinstallation.



29

Install a supplied Mounting Tab over factory hole located at top front of wheel well.



30

Mounting tab location.







31

Slide a supplied "U" Clip over tab, centering hole in clip approximately over hole in fender.



32

Use an awl to poke a hole in tab for ease of screw installation in Step 34.



33

Hold flare on fender and start 5 factory fasteners at locations as shown.



34

Install a supplied Truss Head Screw through fender flare and into clip installed in Step 31.



35

Apply pressure to flare towards vehicle body at each fastening point and tighten all fasteners.





## SECTION 5: REAR FLARE INSTALLATION (ALL MODELS)



Using an 8mm socket, remove and retain 2 factory fasteners from mudflap.



Use a pry tool to disengage 2 plastic retainers at underside of mudflap. Remove and discard mud flap.



Using an 8mm socket, remove and retain 4 factory fasteners from locations shown.



Install a supplied Mounting Tab over factory hole located at top front of wheel well.



Mounting tab location.



Slide a supplied "U" Clip over tab, centering hole in clip approximately over hole in fender.





42

Use an awl to poke a hole in tab for ease of screw installation in Step 44.



43

Hold flare on fender and start 6 factory fasteners at locations as shown.



44

Install a supplied Truss Head Screw through fender flare and into clip installed in Step 41.



45

Apply pressure to flare towards vehicle body at each fastening point and tighten all fasteners.