

Rev. # 1-04

PART # HS1129-3

1996-1999 CHEVY SUBURBAN\TAHOE REAR HANGERS & SHACKLES INSTALLATION INSTRUCTIONS

Please take the time to read these **INSTALLATION INSTRUCTIONS** and check the **Hardware Parts List** to be sure you have all the listed parts before beginning installation.

DJM parts should be installed by qualified mechanics. If you are not familiar with automotive repair have the parts installed by someone with experience.

Please read the warranty information (blue page enclosed). Complete your Product Warranty Card and mail it to DJM Suspension.

Please take a few minutes to fill out your installation helper (back side of warranty). Accurate measurements **BEFORE BEGINNING INSTALLATION** will show any irregularities in your vehicle.

**NEVER WORK UNDER TRUCK SUPPORTED BY A JACK ONLY !!!
USE QUALITY JACK STANDS WHICH HAVE A RATING ADEQUATE FOR YOUR TRUCKS WEIGHT!!!**

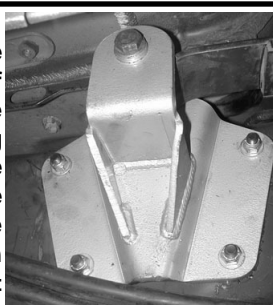
Front hanger will fit factory mounting holes wider at the top. Installer must check mounting holes match new hanger before beginning installation.

NEW SHOCKS DJM PART #2100 ARE REQUIRED.

Hardware Parts List:

- 2- Spring Eye Hangers.
- 2- Shackles w/ bushings.(1011)
- 8- 7/16" x 14 Nylock Nuts.
- 8- 7/16" x 14 x 1-1/4" Bolts.
- 16- 7/16" Flat Washers.
- 2- Flat Bump Stops.

The photo on the right shows the new DJM bracket installed. The leaf spring is moved up closer to the bottom of the floor. The mounting holes in the frame are wider at the top. Check mounting holes before beginning installation. If the mounting holes are different than shown in the photo this kit will not work.



Caution : Leaf springs are under considerable tension. Good judgment should be used when removing shackle bolts. The rear spring may move causing a pinch point between the spring and rear shackle.

Loosen and remove the two shackle bolts, and remove the stock shackle. Tests fit the shackle, align bushings with frame holes and insert bolt. Check to see if shackle will move freely to rear without hitting the floor or any braces attached to bottom of the floor. Be sure there is adequate clearance of the fuel filler hose before continuing.

Remove the bolt holding front of the leaf spring to the front spring hanger. Remove the rivets holding spring hanger to the frame. This can be done with an air chisel, grinder or drill out rivets.

With factory bolts, attach spring to hanger and install nuts. Do not tighten nuts. Mount your new DJM Spring hanger in original holes on the frame with hardware provided. The gas tank may need to be moved to gain access to bolts on driver side. Tighten mounting bolts attaching hanger to the frame. Leave the spring bolts loose until installation is complete. See fig #1.

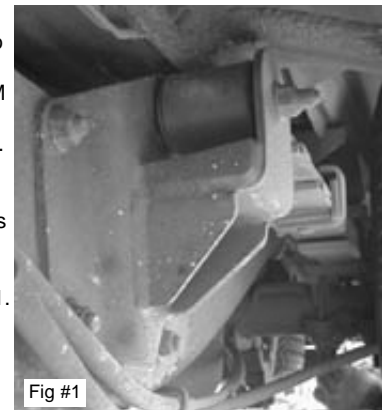


Fig #1

Apply some grease to the bushings and inside sleeves then attach new shackle on the frame mount and bolt in place with factory bolts (Fig #2). Shackle will install with bushings down and open side forward. The hole farthest away from bushing will lower truck more than the closer hole. Now raise the rear axle high enough to align the spring eye and shackle. Insert the remaining bolt and install nuts.

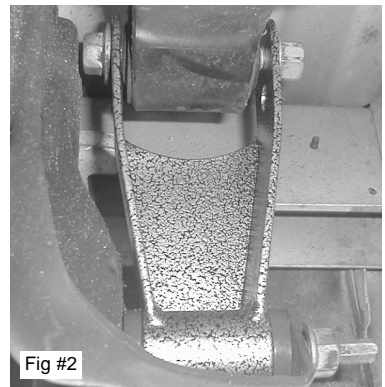


Fig #2

Install rear wheels and torque lug nuts. Remove jack stand and floor jack. Check the height of the rear. You can change the height by moving the spring to the other hole in shackle. When satisfied with the height, install new shocks. Tighten all bolts and recheck all hardware.

Take truck for test drive. Record complete height on installation helper. Double check all hardware.

Check out all the DJM products on the web www.DJMSuspension.com

Tech Line (310) 538-1583