



Installation Instructions 69-5112

**IF YOUR ReadyLIFT PRODUCT IS MISSING A PART
OR HAS A DAMAGED PART, PLEASE
CONTACT CUSTOMER SERVICE DIRECTLY.**

A NEW REPLACEMENT PART WILL BE SENT TO YOU IMMEDIATELY

(877)759-9991

MON-FRI 7AM-5PM PST

OR

EMAIL: INFO@ReadyLIFT.COM

WEBSITE: ReadyLIFT.COM

****Please retain this document in your vehicle at all times****

Limited Lifetime Warranty

This unique product warranty proves our commitment to the quality and reliability of every product that ReadyLIFT manufactures. The ReadyLIFT product warranty only extends to the original purchaser of any ReadyLIFT product, if it breaks, we will give you a new part. Warranty does not apply to discontinued parts. Our Limited Lifetime Warranty excludes the following ReadyLIFT items; bushings, bump stops, ball joints, tie rod ends, heims joints and shock absorbers. These parts are subject to wear and are not considered defective when worn. They are warranted for 12 months from the date of purchase for defects in workmanship. **This product warranty is voided if the vehicle is not aligned after kit installation and proper maintenance is routinely done.**

Product purchased directly from ReadyLIFT has a 30 day return policy on uninstalled products from the date of purchase. Uninstalled product returns must be in the original ReadyLIFT packaging. Please call **(877)759-9991** to get an RGA# for any return. Customer is responsible for shipping costs back to ReadyLIFT. **Returns without RGA# will be refused.** Contact ReadyLIFT directly about any potentially defective parts prior to removal from vehicle. If the part in question is deemed warrantable an RGA# will be assigned and can be returned for repair or replacement. Replacement parts required prior to warranty claim completion must be purchased. Upon receipt and verification of deemed warranty parts claim, a credit or refund can then be processed to complete warranty claim transaction.

ReadyLIFT products are **NOT** intended for off-road abuse. Any damage or failure as a result from off-road abuse voids the warranty of the ReadyLIFT product. ReadyLIFT is **NOT** responsible for any subsequent damages to any related vehicle parts due to misuse, abuse, improper installation, or lack of maintenance. Furthermore, ReadyLIFT reserves the right to change, modify or cancel this warranty without prior notice.



Installation Instructions 69-5112

**Please read Instructions thoroughly and completely before beginning installation.
Installation by a certified mechanic is recommended.**

ReadyLIFT Suspension Inc. is NOT responsible for any damage or failure resulting from improper installation.

Safety Warning: Suspension systems or components that enhance the on and off-road performance of your vehicle may cause it to handle differently than it did from the factory. Extreme care must be used to prevent loss of control or vehicle rollover during abrupt maneuvers. Always operate your vehicle at reduced speeds to ensure your ability to control your vehicle under all driving conditions. Failure to drive safely may result in serious injury or death to driver and passengers. Driver and passengers must ALWAYS wear your seat belts, avoid quick sharp turns and other sudden maneuvers. ReadyLIFT Suspension Inc. does not recommend the combined use of suspension lifts, body lifts, or other lifting devices. You should never operate your vehicle under the influence of alcohol or drugs. Constant maintenance is required to keep your vehicle safe. Thoroughly inspect your vehicle before and after every off-road use.

Installation Warning: All steps and procedures described in these instructions were performed while the vehicle was properly supported on a two post vehicle lift with safety jacks. Use caution during all disassembly and assembly steps to insure suspension components are not over extended causing damage to any vehicle components and parts included in this kit. Included instructions are guidelines only for recommended procedures and are not meant to be definitive. Installer is responsible to insure a safe and controllable vehicle after performing modifications.

ReadyLIFT Suspension Inc. recommends the use of an OE Service Manual for model/year of vehicle when disassembly and assembly of factory and related components. Unless otherwise specified, tighten all bolts and fasteners to standard torque specifications listed within the OE Service Manual, or as referenced in the torque specification list provided in these instructions.

Suspension components that use rubber or urethane bushings should be tightened with the vehicle at normal ride height. This will prevent premature wear or failure of the bushing and maintain ride comfort. Larger tire and wheel combinations may increase leverage on suspension, steering, and related components. Due to payload options and initial ride height variances, the amount of lift is a base figure. Final ride height dimensions may vary in accordance to original vehicle ride height. Always measure the vehicle ride height prior to beginning installation.

Vehicle ride height chart

Driver Front:	Driver Rear:	Pass. Front:	Pass. Rear:
<u>Stock</u> <u>Lifted</u>	<u>Stock</u> <u>Lifted</u>	<u>Stock</u> <u>Lifted</u>	<u>Stock</u> <u>Lifted</u>

Bolt Size Millimeters	Torque Specs in FT/LB	
	Metric Grade 8.8	Metric Grade 10.9
6mm	6	8
8mm	16	22
10mm	40	45
12mm	54	70
14mm	89	117
16mm	132	175
18mm	182	236

Bolt Size SAE	Torque Specs in FT/LB	
	Grade 5	Grade 8
5/16	15	20
3/8	30	35
7/16	45	60
1/2	65	90
9/16	95	130
5/8	135	175
3/4	185	280



Installation Instructions 69-5112

Bill of Materials

Description	Qty
Front Strut Extension	2
M10 Flange Nuts	6
Front Diff Drop Kit (Packaged)	1
Skid Plate Spacer Kit (Packaged)	1

Description	Qty
Front Sway Bar Drop Spacers	2
M10-1.25 x 20mm Bolt w/washer	4
1" Rear Lift Blocks	2
U Bolts- 14mm x 210mm, square	4
14mm Nuts and Washers	8

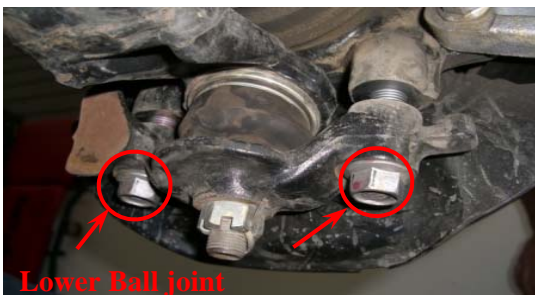
The Bill of Materials represents the component contents of this kit. All hardware is of the highest grade and the components are manufactured to exacting specifications for a trouble free installation. Use the attached torque specifications chart when final tightening of the nut and bolts are done.



1. Remove the skid plate by unbolting the four 12mm bolts that hold it on.



2. Starting from the passenger side, loosen the upper and lower strut mount nuts.



Lower Ball joint

3. Loosen, don't remove the 19mm lower control arm nut and bolt, Remove the 19mm lower ball joint bolts.



4. Remove the lower strut mount nut and bolt. Push the lower control arm down.

Installation Instructions 69-5112

5. Remove the three upper strut mounting bolts.

Remove the strut from the vehicle and mount it in a bench vise. Install the ReadyLift® kit, and torque fasteners to OEM specifications. Note the shape of the ReadyLift® spacer; the strut will be **rotated 180 degrees** when reinstalled.



6. Reinstall the strut assembly in its stock location. Leave the three upper strut mounting nuts loose. Raise the lower control arm and install the lower strut mounting bolt and nut. Use a floor jack to raise the lower control arm up in order to get the lower ball joint bolts installed. Be sure to use a thread locker on the lower ball joint bolts. Be sure to tighten all nut and bolts to factory specs.

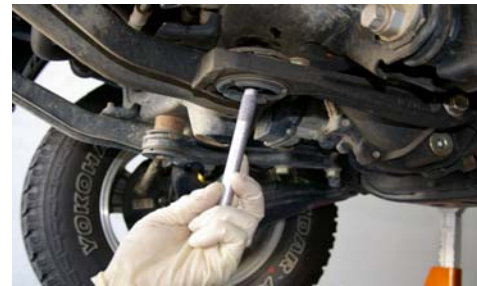
7. Repeat steps 2 through 6 on the Driver's Side of the vehicle. Follow each step closely, making sure to double-check the torque on all fasteners.



Differential Drop Installation



1. Position a floor jack under the front differential. Raise the pad so that it is touching the diff.



2. Remove the factory 19mm differential mounting nuts and bolts. The OEM washers will be reused.



3. Install the 1" spacers between the differential supports and the front cross-member. Install the new bolts with factory washers and the new nuts and washers.



4. Re-install the skid-plate, use two OEM bolts for the front and the supplied and torque the bolts to factory specs. Re-install the wheels and torque to factory

Installation Instructions 69-5112

SKID PLATE SPACER INSTRUCTIONS



Using the hardware provided, install the M8 bolt, washer, skid plate, and 1/2 tall spacer into the back two skid plate mounting points. Use the OEM hardware for the two front mounting parts.

SWAY BAR SPACER INSTRUCTIONS



1. Remove the sway bar from the frame on both sides. Remove the metal saddle and leave the bushing.



2. Install aluminum spacer to the frame using the hardware supplied. Note the position of the holes.



3. Repeat for the other side and torque bolts.



4. Install sway bar saddle brackets reusing the factory hardware.



5. Repeat for the other side and torque all bolts.



6. Sway bar spacer properly installed.

READYLIFT[®]

SUSPENSIONS

Installation Instructions 69-5112

REAR-BLOCK INSTRUCTIONS

1. DO NO STACK BLOCKS AS IT IS DANGEROUS TO YOU AND OTHERS, AND IS ILLEGAL IN MOST STATES. Rear Block Installation

Remove the four 19mm nuts and two u-bolts from one side of the vehicle.



2. Using a jack and a block of wood, carefully raise the truck by the leaf spring until there is enough room for the new block. Install the ReadyLift[®] 1" rear block.

Lower the jack and make sure that the leaf spring center pin goes into the hole on top of the block.

Install ReadyLift[®] u-bolts using the hardware provided. Torque to 120 ft/lbs. Repeat on opposite side.



Final Checks & Adjustments

Post Installation Warnings: Once the vehicle is lowered to the ground, check all parts which have rubber or urethane components to insure proper torque. Torque wheels to factory specs. Move vehicle backwards and forwards a short distance to allow suspension components to adjust. Turn the front wheels completely left then right and verify adequate tire, wheel, brake line, and ABS wire clearance. Test and inspect steering, brake and suspension components for tightness and proper operation. Inspect brakes hoses and ABS lines for adequate slack at full extension. Failure to perform the post inspection checks may result in vehicle component damage and/or personal injury or death to driver and/or passengers. Test drive vehicle and re-check the torque of all fasteners and re-torque wheels on vehicle. Re-adjust headlamps.

Vehicle Handling Warning: Vehicles with larger tires and wheels will handle differently than stock vehicles. Take time to familiarize yourself with the handling of your vehicle.

Wheel Alignment/Headlamp Adjustment:

It is necessary to have a proper and professional wheel alignment performed by a certified alignment technician. Align the vehicle to factory specifications. It is recommended that your vehicle alignment be checked after any off-road driving. In addition to your vehicle alignment, for your safety and others, it is necessary to check and adjust your vehicle headlamps for proper aim and alignment

Vehicle Re-Torque and Safety Inspection:

Upon completion of all services and adjustments performed on your vehicle, and within 50 miles of driving, check to ensure all fasteners and hardware are properly torqued to specification as noted in the vehicles factory service manual or the torque chart included.